

# DC-40 *FullHD*)

Ultrasound System



Powerful | Efficient | Sleek

**mindray**

# Innovative High Performance Technology

To deliver on the promise of quality healthcare within reach, Mindray's DC-40 Ultrasound System incorporates innovative high-performance technology in an elegant compact design.

Combining a wide range of clinical application packages, auto-measurement tools, and onboard education software, the DC-40 System makes ultrasound exams accurate, efficient, and accessible with exceptional capability. The 13.3" touchscreen provides ease-of-use and helps reduce the daily work burden, while the compact design and built-in battery ensure maximum mobility.

## Ergonomic Features

13.3" slim full HD LED touchscreen, 30° rotation

Gel warmer

Dedicated endocavity transducer holder

Storage plate



21.5" full HD LED monitor, 180° rotation

Rotatable and height adjustable control panel with integrated design

Retractable QWERTY keyboard

4 active transducer ports

# Exceptional capability

The DC-40 System delivers a range of technologies that maximize diagnostic accuracy for general imaging, OB/GYN, cardiology, and other specialties. The 3D imaging capabilities incorporate innovative applications for a high standard of performance. Additionally, iLive 4D imaging technology delivers optimal results and can increase user confidence.

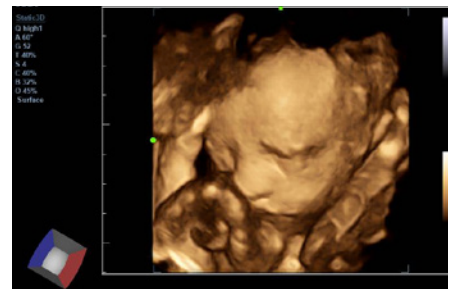
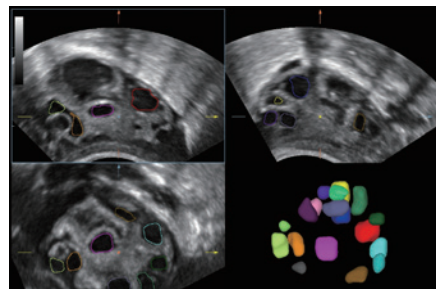


## Urological Solution

The specially-designed biplane transducers, including the linear/convex and dual micro-convex, support versatile urological solutions.

## One-Touch Switch

One-Touch Switch allows users to change imaging modes with a single keystroke, simplifying workflow and improving patient throughput.



## Smart OB

Smart OB uses proprietary technology to automatically calculate the most frequently examined fetal parameters, including BPD, OFD, HC, AC, and FL.

## Smart FLC

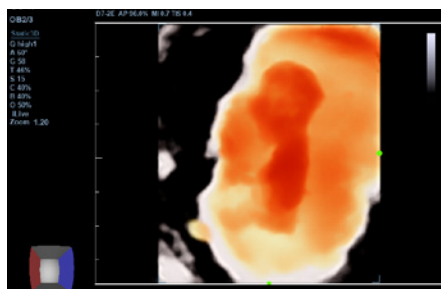
Smart FLC is a tool used to automatically detect the number and calculates the volume of ovarian follicles using a 3D volumetric data set. This technology also provides a report with color marks for seamless identification.

## Smart Face

Smart Face provides fast and intelligent optimization of the fetal face with one-touch operation. This technology removes occlusion and eliminates noise, generating an optimal rendering of the fetal face.

## iLive

A 4D rendering and lighting algorithm used to obtain realistic and detailed views of the fetus.



Fetus with iLive

## Automatic Measurement

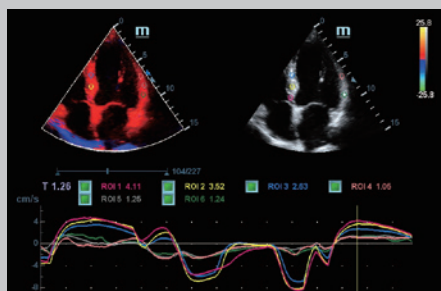
Application-specific Auto-measurement packages include Auto IMT, Auto LV, Auto PW trace and calculation, Smart OB, and Smart NT, all of which reduce repetitive steps and provide enhanced workflow.

## IVF Package

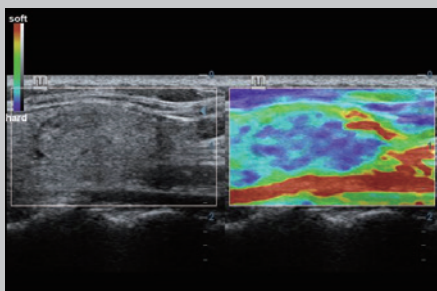
IVF Package provides intuitive documentation for follicles and endometrial measurements.

## Raw Data

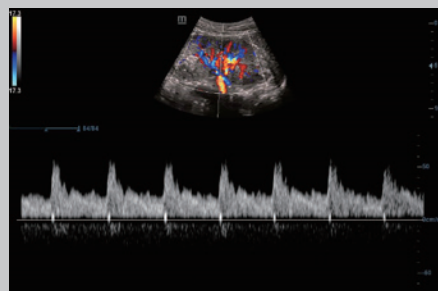
Raw data allows clinicians to perform image adjustments, measurements, and other functions, after an exam is complete, using stored data.



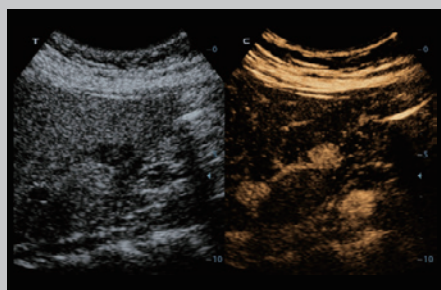
Tissue Doppler Imaging with Q/A



Natural Touch Elastography of Thyroid Mass



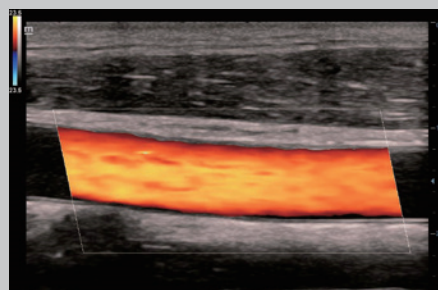
Kidney Artery Triplex



UWN CEUS Live Tumor



Normal Liver



Carotid Color

## Mindray North America

800 MacArthur Blvd., Mahwah, NJ 07430

Tel: 800.288.2121 Support: 877.913.9663 Fax: 800.926.4275 [www.mindray.com](http://www.mindray.com)

Mindray® is a registered trademark of Shenzhen Mindray Bio-Medical Electronics Co., Ltd. All brands and product names are trademarks of their respective owners. ©2019 Mindray DS USA, Inc. Subject to change. 10/19 P/N: 0002-08-40413 Rev A

**mindray**

healthcare within reach