

# MX8

## Cardiovascular Ultrasound System

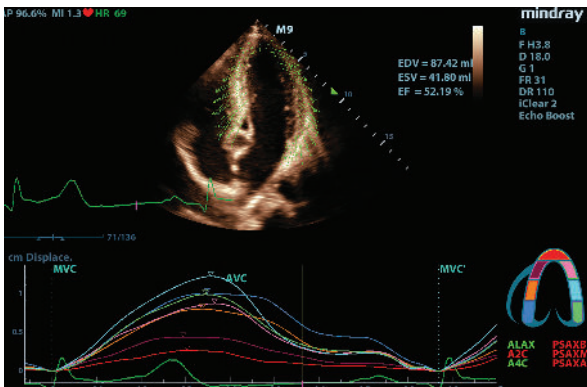


# Elevating Cardiovascular Ultrasound

The MX8 Cardiovascular Ultrasound System is a specialty-focused, portable system designed with cardiovascular imaging in mind. With a weight and thickness of just 6.6 lbs and 1.7 inches respectively, the MX8 Cardiovascular System is one of the lightest and thinnest laptop systems in the industry. It offers a customizable touchscreen and an intuitive user experience to help ensure reliable and efficient diagnosis during the most challenging exams.

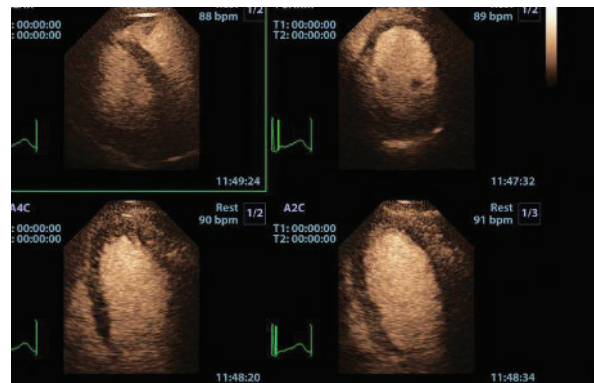
Powered by Mindray's revolutionary ZONE Sonography® Technology+ (ZST+), the MX8 Cardiovascular System boasts advanced ultrasound capabilities that provide a harmonic balance of resolution and tissue uniformity. The system improves reproducibility, optimizes productivity, and increases consistency for all end-users with an extensive suite of artificial intelligence (AI)-enhanced technologies specialized for cardiac and vascular assessments.

## Advanced Cardiac Applications



### Tissue Tracking with Quantitative Analysis

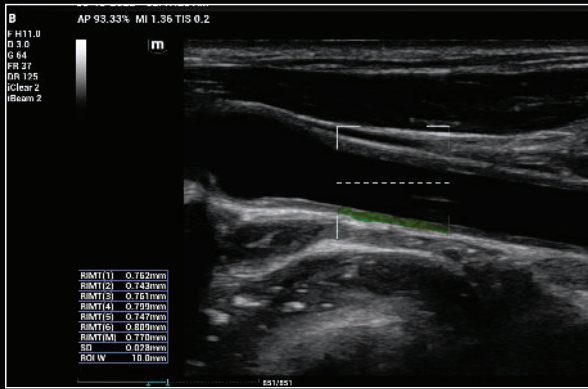
TTQA allows users to analyze the motion of cardiac tissue by tracking the speckle displacement in the image from frame to frame. This non-angle-dependent tool, with onboard analysis, can be performed at the bedside, saving time and simplifying challenging cases.



### LVO with Stress Echocardiography

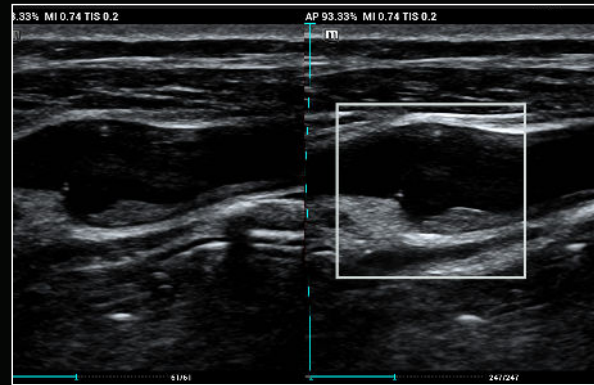
Utilizing LVO during stress examinations enhances differentiation between tissue and the blood pool, providing better visualization of the endocardium. This package includes customizable user protocols, flexible wall motion scoring, and a comprehensive reporting suite.

# Advanced Vascular Applications



## RIMT

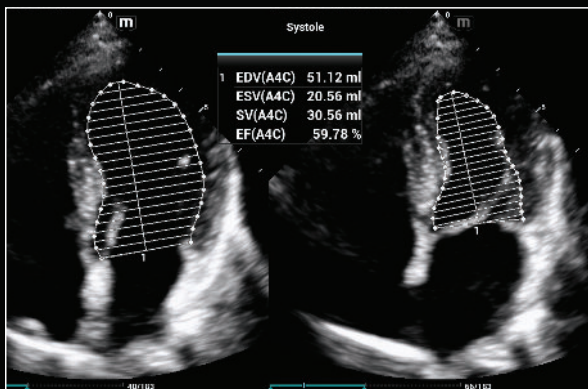
RIMT allows for the automatic measuring of Carotid Intima-Media Thickness. Based on real-time radio frequency data, RIMT offers improved accuracy over conventional 2D-based IMT methods, which rely solely on grayscale image quality, reducing inter-operator variability and enhancing confidence.



## HD Scope

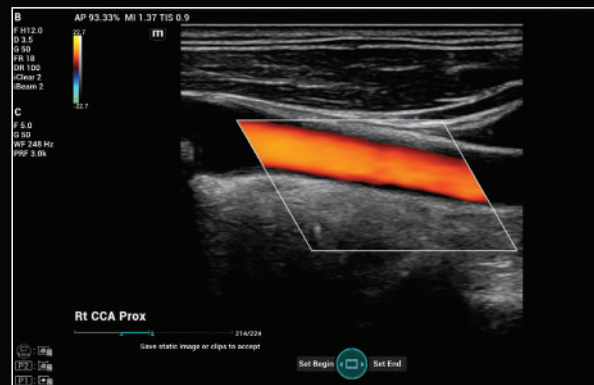
A proprietary image processing technique that enhances B-mode tissue characterization, improving spatial and contrast resolution in a specific region of interest, analyzing the received channel data, and applying various filtering and processing algorithms.

# Advanced Workflow Applications



## Auto EF

A proprietary technology that automatically analyzes 2D echo data to recognize diastole/systole frames, calculate EDV/ESV/EF for left ventricle function evaluation, and reduce inter-operator variability and exam times.



## iWorks

iWorks is a powerful and customizable protocol software that can reduce scanning times by up to 50%. This tool offers pre-labeled, standardized exam guidance in a flexible, easy-to-use format. The MX8 provides dozens of protocols and the ability to create unique customer exams with 2D, M-mode, Doppler, measurements, and annotations built in.



# Designed for Your Environment

## Featuring:

1. 15.6" LED monitor
2. Built-in battery that provides 90 minutes of continuous scan time in B-mode
3. Optional U-bank battery companion that supports up to 4-hours of continuous scanning
4. Comprehensive suite of cardiac and vascular transducers, including TEE
5. Advanced cardiovascular AI-enhanced technologies and automation tools

## Peace of Mind Protection

The Industry's Best Investment Protection

### Living Technology

Living Technology™ is a continually evolving software-based approach to providing our customers with easily upgradeable enhancements made possible by our core imaging technologies. These upgrades secure product investment protection by ensuring that Mindray Ultrasound Systems remain at the cutting-edge of imaging performance throughout their entire life cycle.

### Standard warranty\* includes:

#### Five-years of coverage for:

- Main system and parts, and technical phone support Monday–Friday, 8 am–8 pm ET (excluding U.S. holidays)
- Standard transducers (normal wear and failure)
- Software performance updates with Living Technology

#### One-year of coverage for:

- Specialty transducers including, but not limited to TEE transducers

\* Warranties for systems purchased from Mindray authorized agents can vary.



### Mindray North America

800 MacArthur Blvd., Mahwah, NJ 07430

Tel: 800.288.2121 Support: 877.913.9663 Fax: 800.926.4275 [www.mindray.com](http://www.mindray.com)

Mindray® is a registered trademark of Shenzhen Mindray Bio-Medical Electronics Co., Ltd. All brands and product names are trademarks of their respective owners. ©2022 Mindray DS USA, Inc. Subject to change. 11/22 P/N: 0002-08-40624 Rev A

# mindray

healthcare within reach