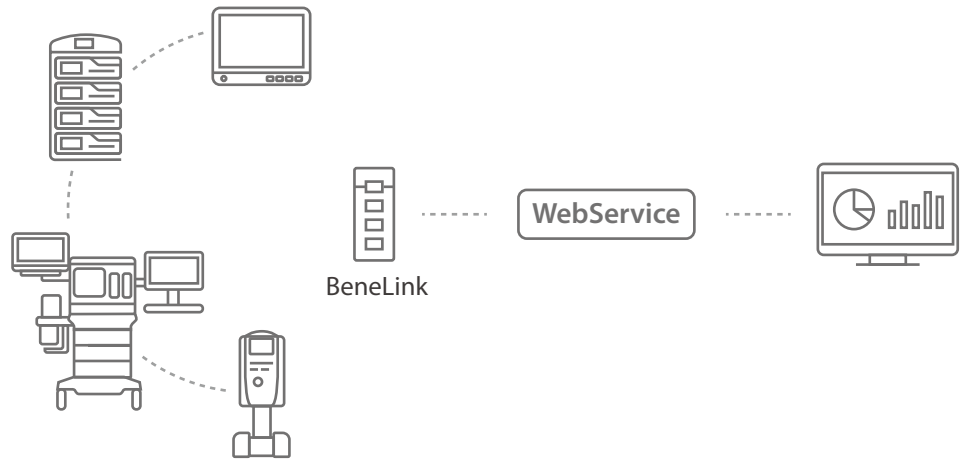


Complete integration

- Support Mindray and third-party equipment connected via BeneLink, providing a complete device management solution for the hospital.
- Simplify the management of all equipment with the integrated third-party asset management system through the Webservice interface.
- Management and clinical data share the same network, supporting clinical application extension.



Cost saving and investment protection

- The system is compatible with the existing hospital network, reducing the network construction cost.
- The main equipment of Mindray adopts direct network connection and no collector is required as to save hardware cost.
- The system can grow and support the expansion of new devices while the original architecture keeps unchanged, thus reducing the replacement cost.

DCB0129 compliance

To ensure patient safety, Mindray's digital healthcare solutions - eGateway and BeneVision Central Management System (CMS), which includes M-IoT Device Manager - are compliant with the DCB0129 clinical risk management standard set out by NHS England. Find our compliance listing on the Safehand Assured Library.



www.mindray.com

P/N:ENG-M-IoT-210285X4P-20230504
©2023 Shenzhen Mindray Bio-Medical Electronics Co.,Ltd. All rights reserved.

mindray
healthcare within reach

M-IoT Device Manager

Visible equipment, Controllable management

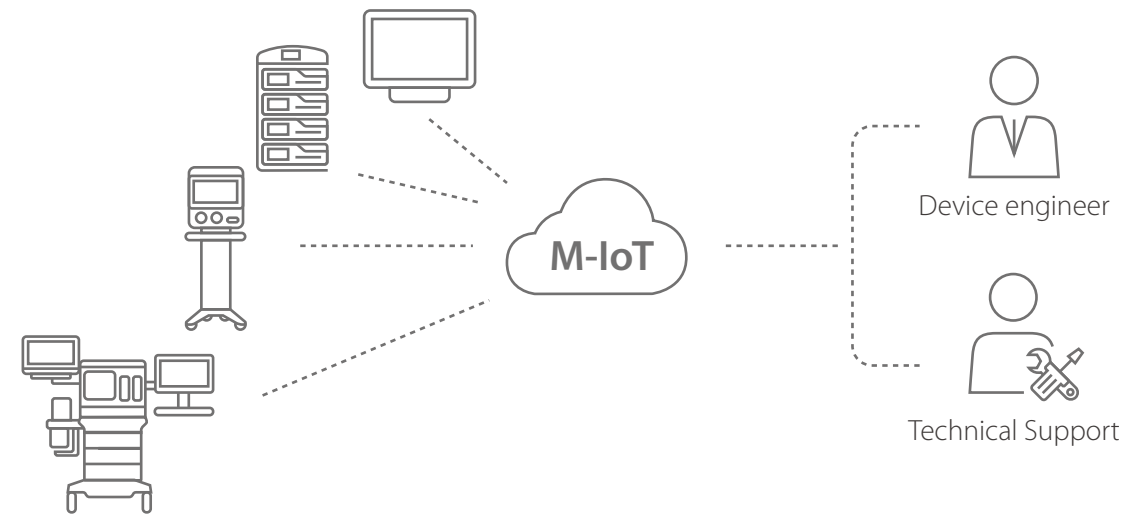




Maintain equipment remotely

The M-IoT Device Manager obtains comprehensive device data and supports remote maintenance to help biomedical engineers ensure the safety and effectiveness of all equipment at all times.

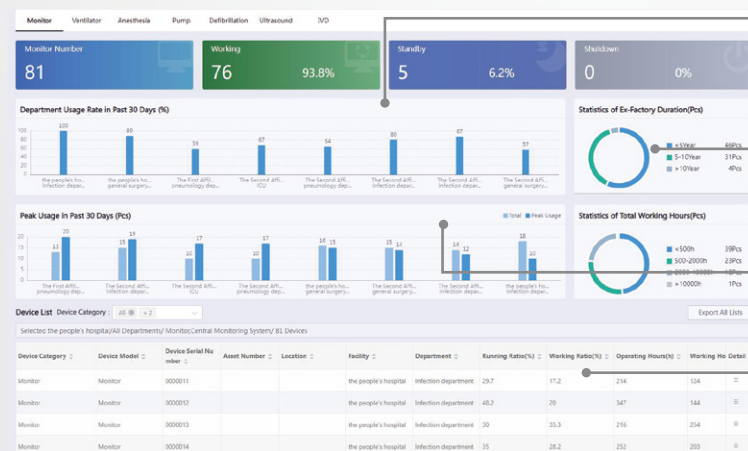
- The device management dashboard provides the device exception information to guide maintenance.
- One-key log export, to quickly access factory support and locate problems.
- Centralized software upgrade when idle, reduce maintenance interruption time.
- Configurations are distributed uniformly, ensuring the consistent configurations & clinical procedures.
- IP/MAC address for network access control to ensure cybersecurity.



Designed to combat the everyday challenges faced by biomedical engineers, Mindray M-IoT Device Manager uses the Internet of Things and information technology to help biomedical engineers improve management and operation efficiency.

Achieving maximum usability

The M-IoT Device Manager obtains maintenance information from all connected equipment, providing statistical analysis on distribution and usage in various departments, helping to protect your investment.



Department Usage Rate: Analyze the equipment usage of each department to guide device allocation

Statistics of Ex-Factory Duration: Analyze the proportion of new and old devices to guide the updating and scrapping

Peak Usage: Compare the peak usage value of each department to guide asset reorganization

Configuration Utilization: Statistics of equipment, modules, and accessories to help optimize equipment purchase

Real-time Device Information

The M-IoT Device Manager automatically acquires device locations and other detailed information to facilitate device query, tracking, and inventory, improving the efficiency of device asset management.

Efficient inventory: The web page displays the real-time location information of all devices, improving the asset inventory efficiency.

Device tracking: The history location can be viewed to provide a basis for device tracking.

Asset query: Support keyword query to quickly obtain comprehensive device and asset information.

