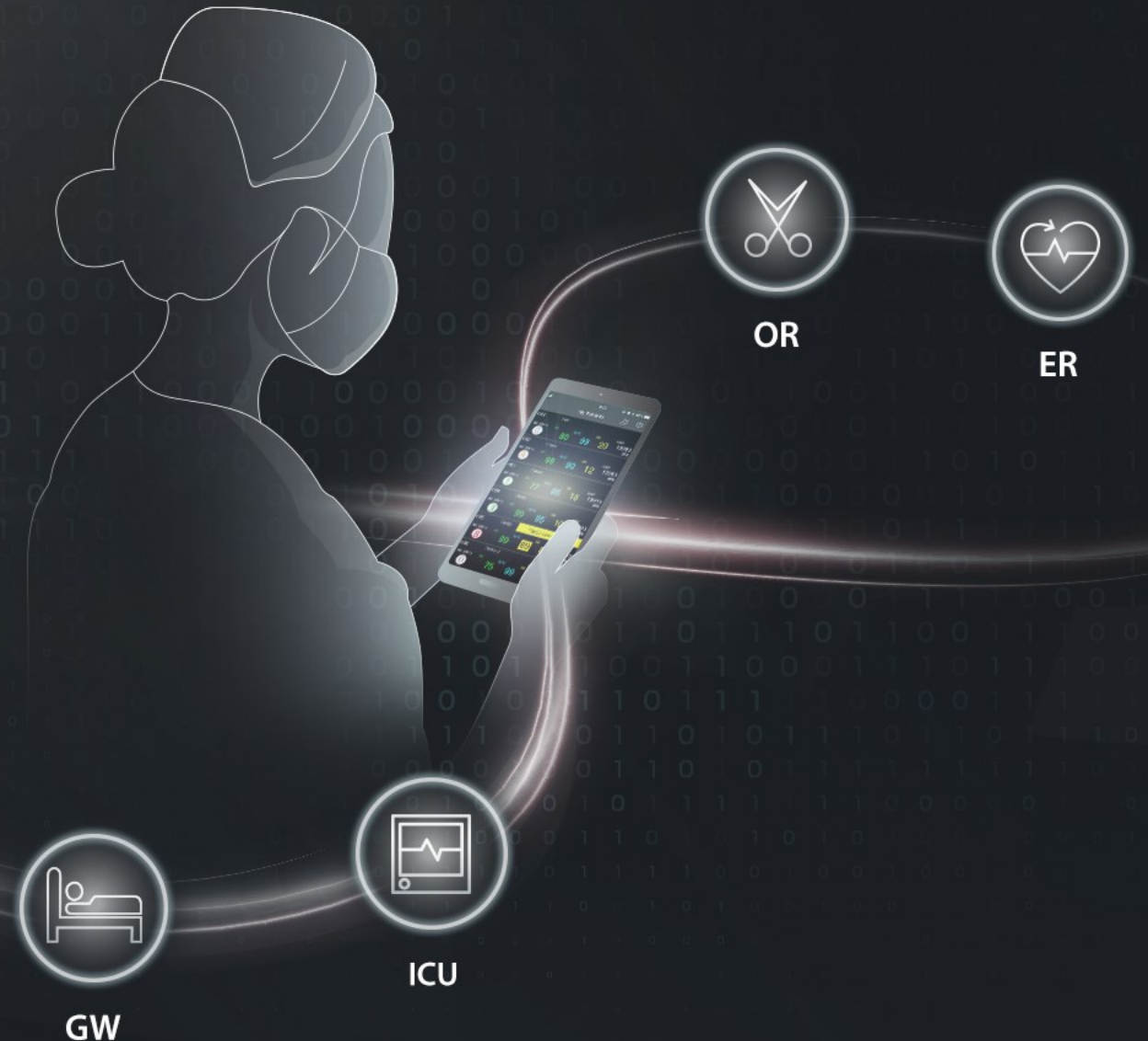


m-CONNECT IT Solution

Connecting Infinite Possibilities

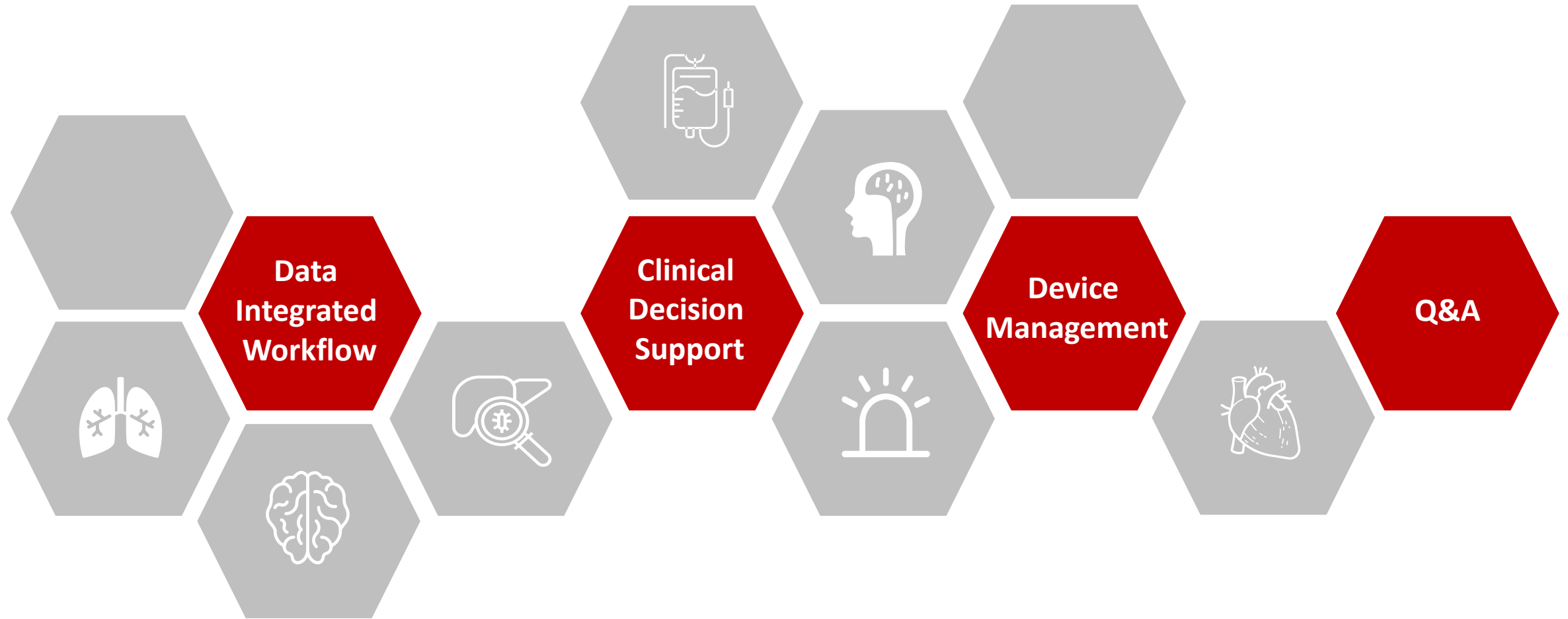
- Easy data access
- Streamlined workflow
- Smart clinical decision making



EBME Expo 2024

Andy Batkin, Ross Hood & David Holt

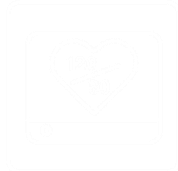
Agenda Topics



Mindray at a glance

Comprehensive product portfolio

Patient Monitoring



Vital Signs



Mid Acuity Monitoring



High Acuity Monitoring



Telemetry & wearables Monitoring



ECG & Defibrillation



Manual Defibrillation



AED



ECG



Connectivity & Integration



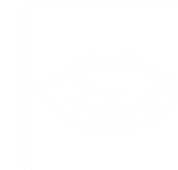
Anaesthesia



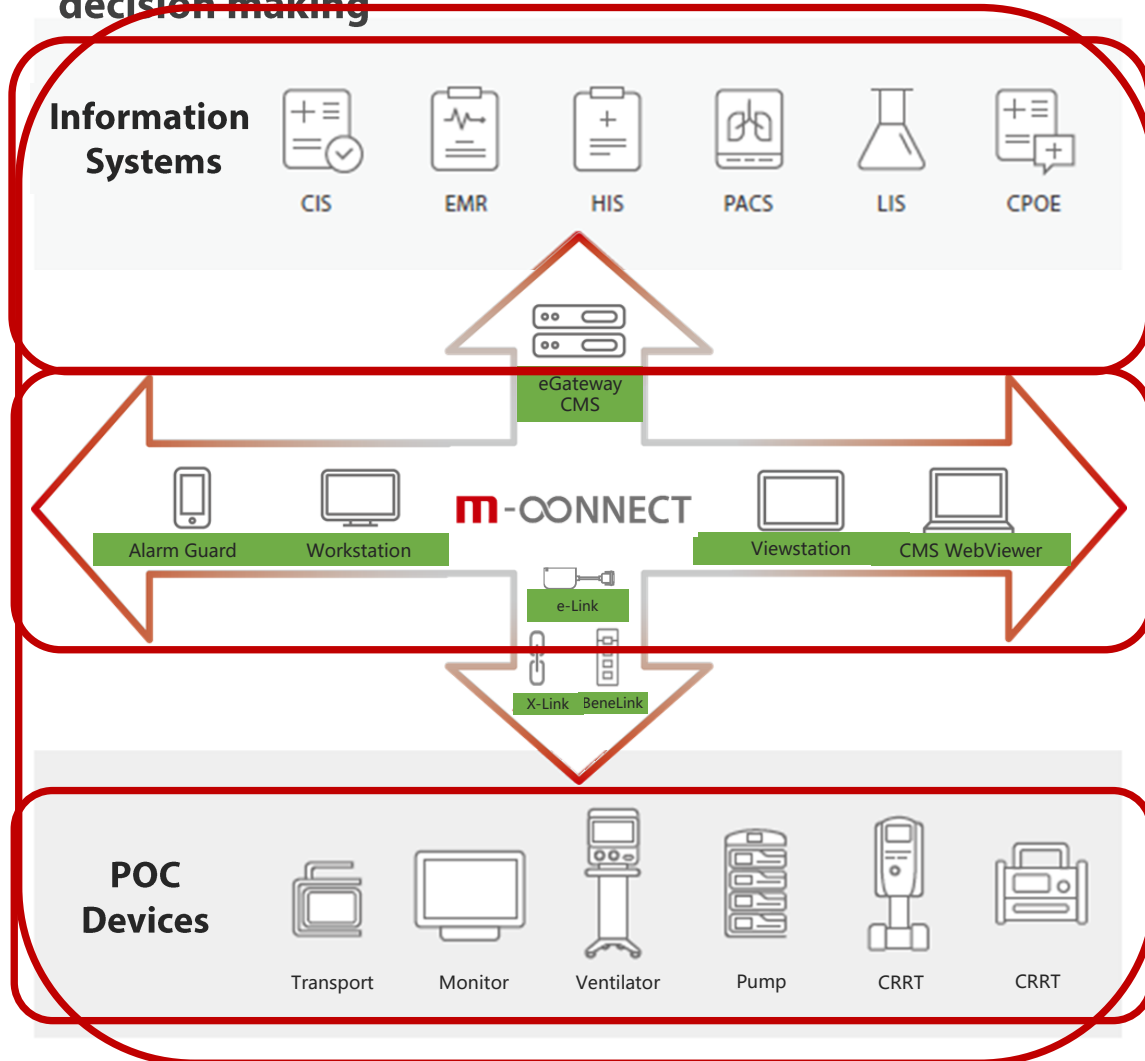
Ventilation



Ultrasound



M-Connect is the Mindray IT ecosystem, a highly scalable, flexible and comprehensive connectivity solution. M-Connect enhances the central monitoring platform, providing visibility, streamlined workflow and improved clinical decision making.



EPR Interoperability

- Vendor-neutral integration
- Upload accurate and timely data automatically to EPR

Clinical Surveillance

- Access patient data anytime, anywhere
- Flexible access to information supports informed decision making

Bedside Device Integration

- Mindray & third-party interoperability
- Integrate devices for holistic monitoring data at the point-of-care

Mindray & Third-Party Device Interoperability

Comprehensive device data integration made simple

Bene-Link



Vendor-agnostic

More data at a glance

X-Link



For Mindray devices

Ensure complete data upload

e-Link



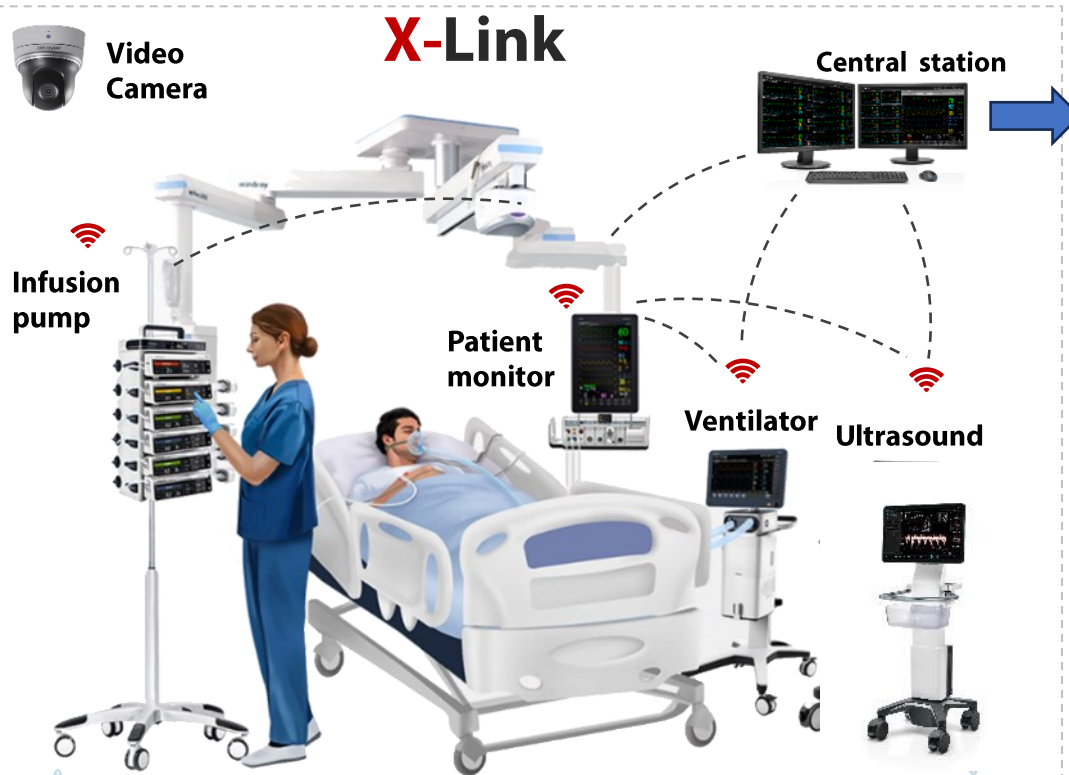
Vendor-agnostic

Improved decision-making

Mindray Interoperability

One screen for all data, improve efficiency of diagnosis and treatment, reduce human errors

ICU patient-centric device integration



Distributed Patient Monitoring System

Identify earlier and respond faster

Nursing Station Workstation



Department View Station



CT | Isolation Room | OR nView



Clinicians Office CMS Web Viewer



Mobile Alarm Management Alarm Guard



On the move Mobile Viewer



Ventilator



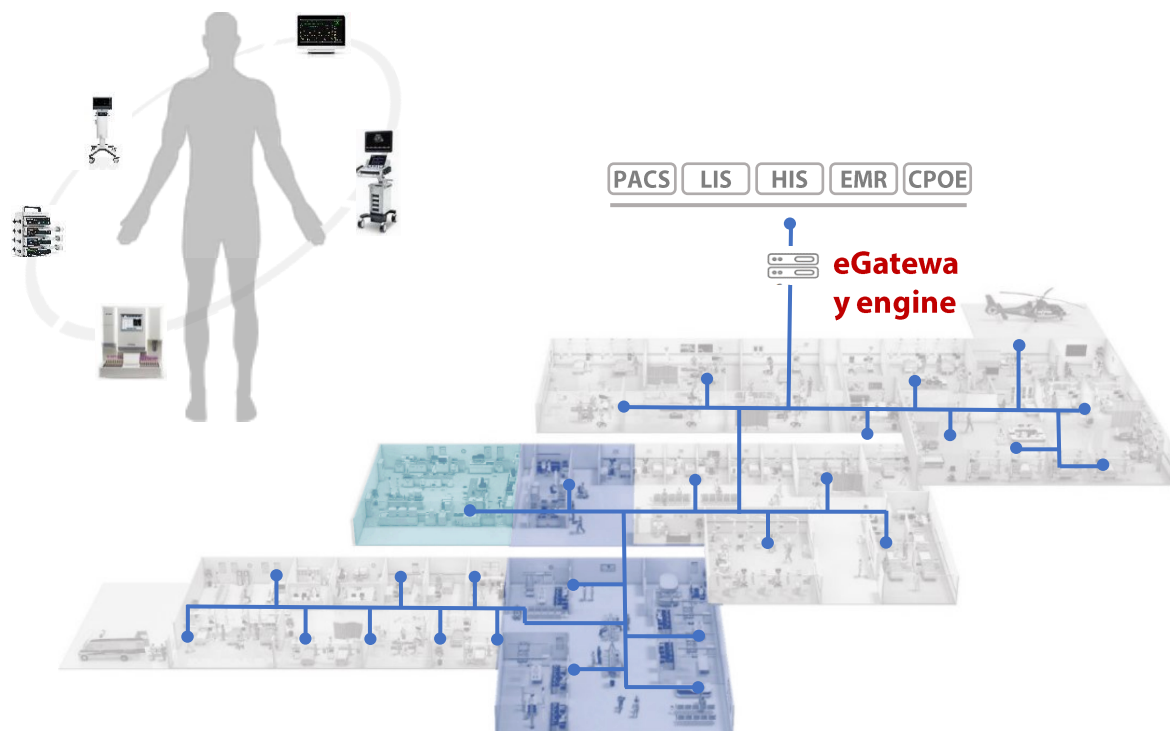
Infusion pump



Anesthesia machine

EPR Interoperability

Patient-centric data integration and real-time data sharing with hospital information systems



- **Standards based interoperability**
HL7 protocol, compatible with **hospital information systems**
- **Easy implementation**
eGateway as **single, unified interface**
- **Scalability**
Up to **1200 beds** supported
- **High quality data for clinical research**
Full disclosures vital sign, high resolution waveform, alarm, respiratory loop, setting, report

EPR Interoperability

Vendor-neutral integration from a trusted partner

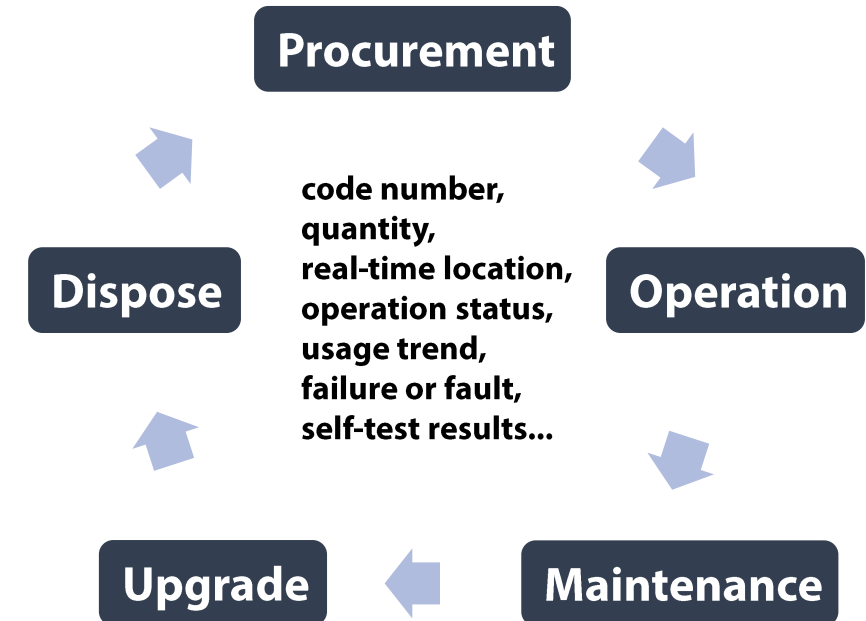


EPR Interoperability

mindray

Intelligent Device Management

Digitalized devices management to help reduce total cost of ownership



A full-page background image showing three people (two men and one woman) running away from the camera on a beach towards the ocean. The sun is low on the horizon, creating a bright, golden glow and long shadows. The sky is filled with soft, white clouds. The water is splashing around the runners' feet.

VISION

Better healthcare for all

MISSION

**Advance medical technologies to make
healthcare more accessible**

CORE VALUES

**Align with our customers
Value and enrich our people
Be precise and practical
Always forge ahead**

THANK YOU

Subjects:

- Data essentials for the connected clinical workflow?
- What are clinicians using ultrasound for in point of care?



TEX20 series
Diagnostic Ultrasound System



X-Link
Revolutionary imaging and physiological information solution

Point of care re-imagined



Point of care re-imagined

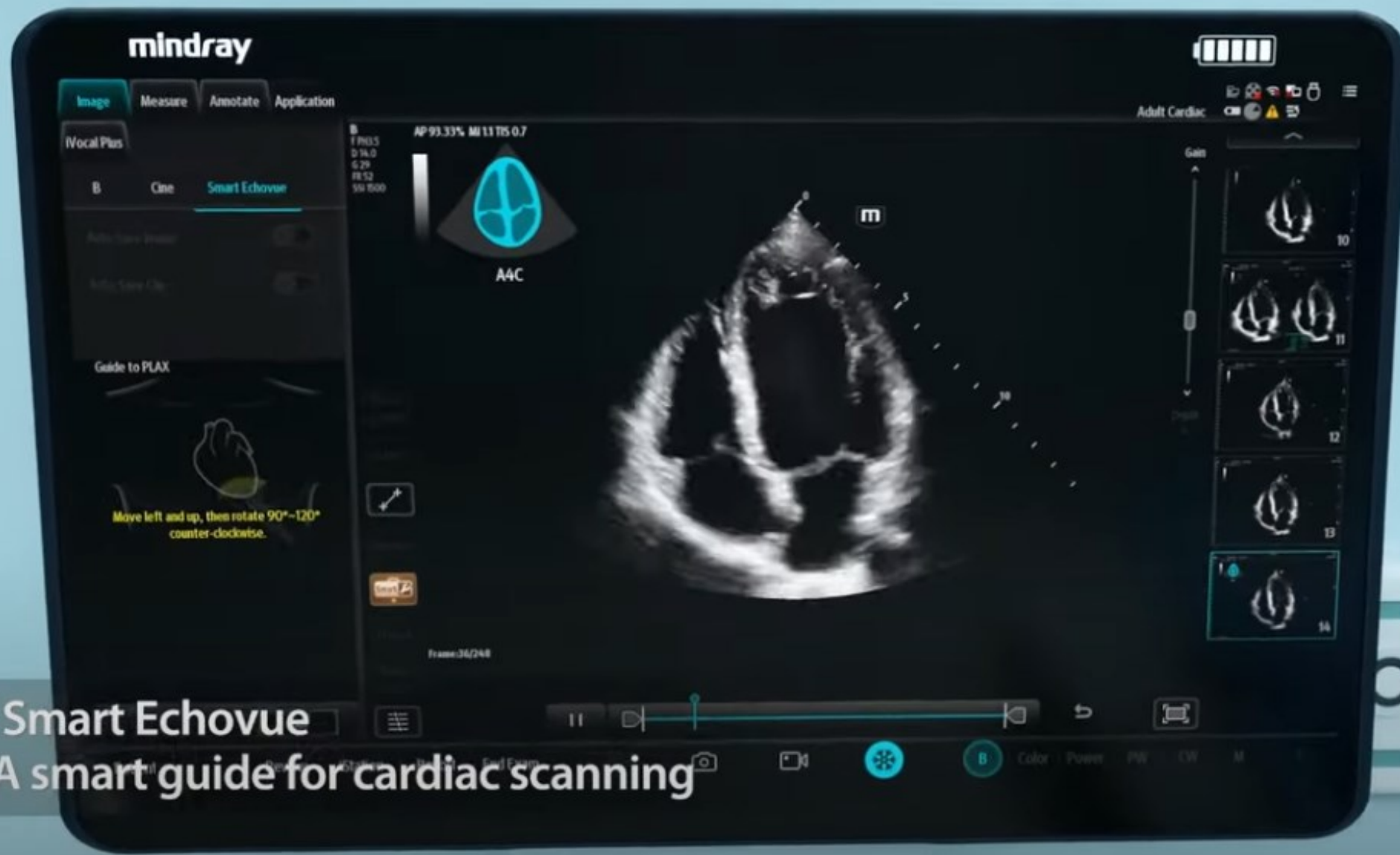


Point of care re-imagined



X-Pilot
Clinical application-oriented workflow

Point of care re-imagined




Smart Echovue
A smart guide for cardiac scanning

Point of care re-imagined



Smart TTQA
Automatic and quantitative evaluation of myocardial motion

Point of care re-imagined

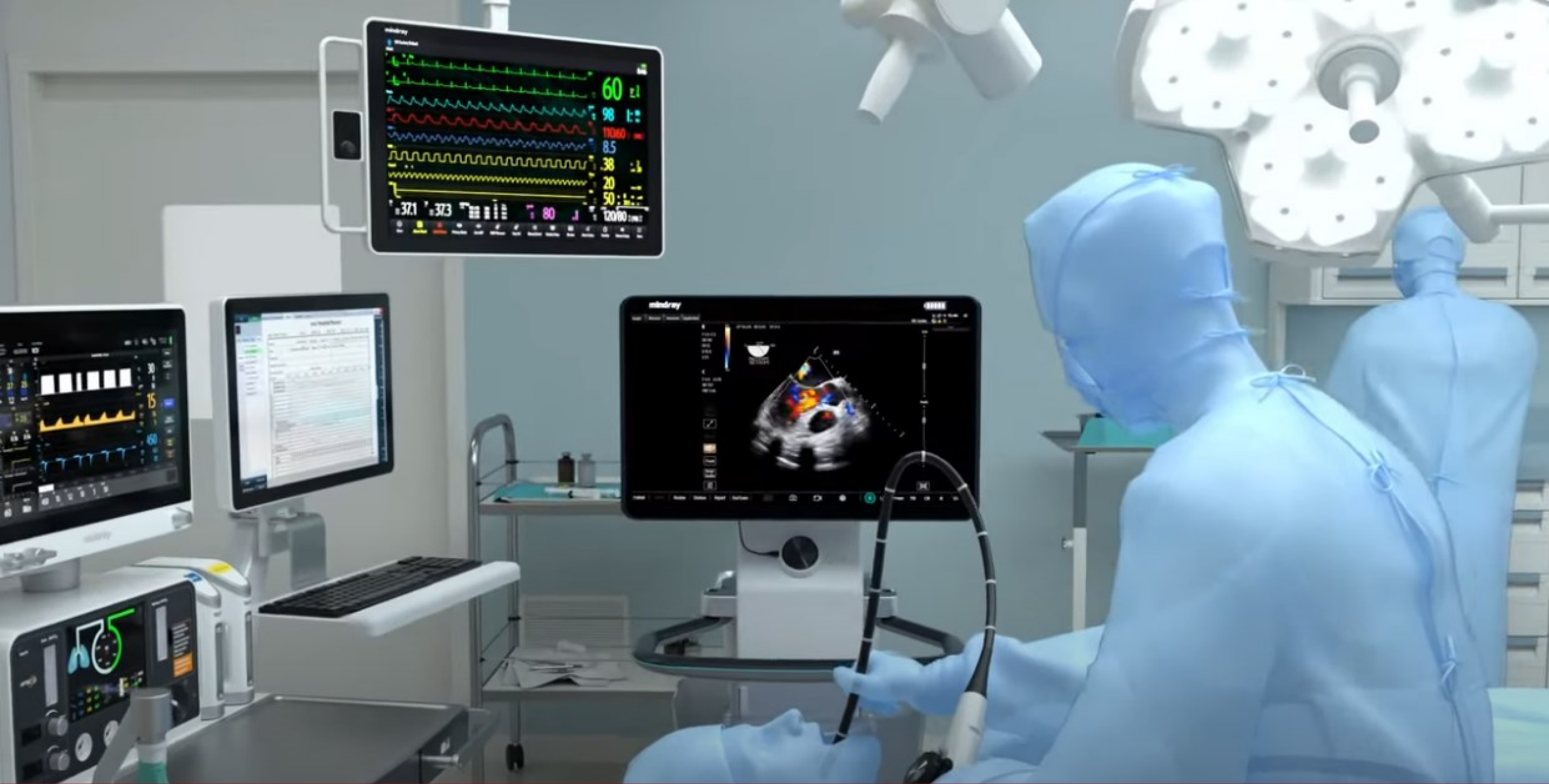


The image shows a medical monitor in a clinical setting. The monitor displays a 'Smart VTI' interface. At the top, there's a header with 'APPROX. BOLD' and 'Add Cardiac'. Below this, a 3D echocardiogram of a heart is shown. To the right of the heart, a table lists various cardiac parameters: CO (2.25 L/min), VTI (20.56 cm), HR (70 bpm), Stroke Volume (45.2 mL), Stroke Volume Index (2.2 L/min/m²), Stroke Volume Variation (17.37%), Stroke Volume Index Variation (1.48 L/min/m²), and Stroke Volume Index Variation (0.06). Below the heart image, a waveform graph is displayed. At the bottom of the screen, there's a control panel with tabs for 'Graph', 'Parameters', 'Settings', and 'Report'. The 'Parameters' tab is active, showing 'Smart VTI' settings: 'Graph' (toggle on), 'CO VTI' (0.00 VTI), 'Stroke Volume' (0.00 L/min), 'Stroke VTI' (0.00 VTI), 'Stroke Sensitivity' (slider at 5), and 'Auto Calc Cycle' (slider at 5). A 'Save' button is at the bottom right of the control panel. To the right of the main monitor, a stack of four smaller monitors is visible, each displaying different vital signs. Further to the right, another monitor shows a lung diagram and vital signs. The background is a blurred clinical setting.

Smart VTI

Automatic calculation of cardiac output

Point of care re-imagined



Point of care re-imagined



iVocal Plus
Voice command for hands-free operation

Point of care re-imagined

Complete Connectivity

@EBME Expo 2024

26 – 27 June, 2024



mindray
healthcare within reach

TEX20 series
Diagnostic Ultrasound System



Find us on stand D01



Waveforms in Anaesthesia

**Andi Richardson,
Product Specialist, Anaesthesia & Ventilation**

➤ **EBME Expo 2024**

HFV₂

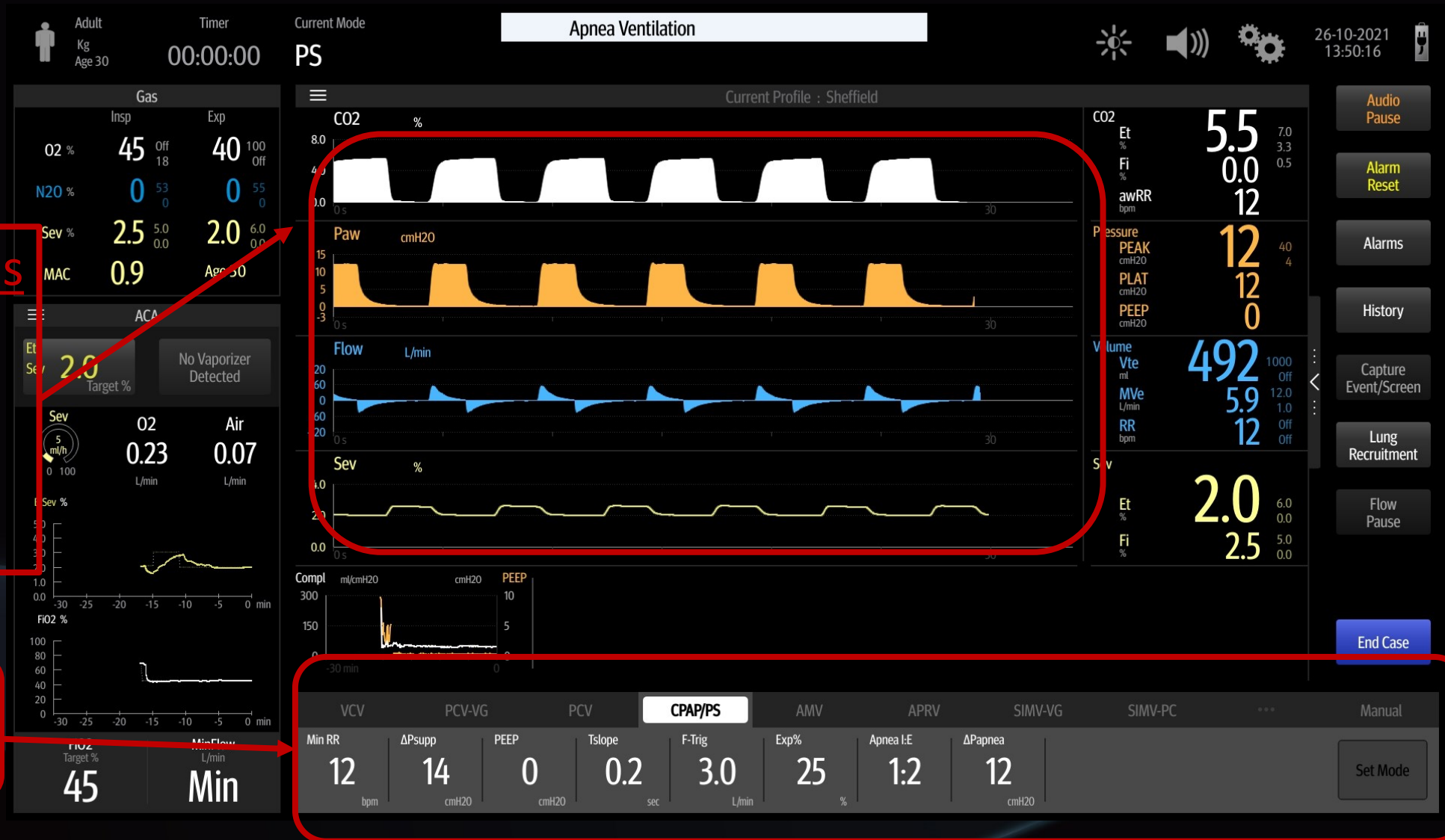
HFNC

eMAC

AnaeSight



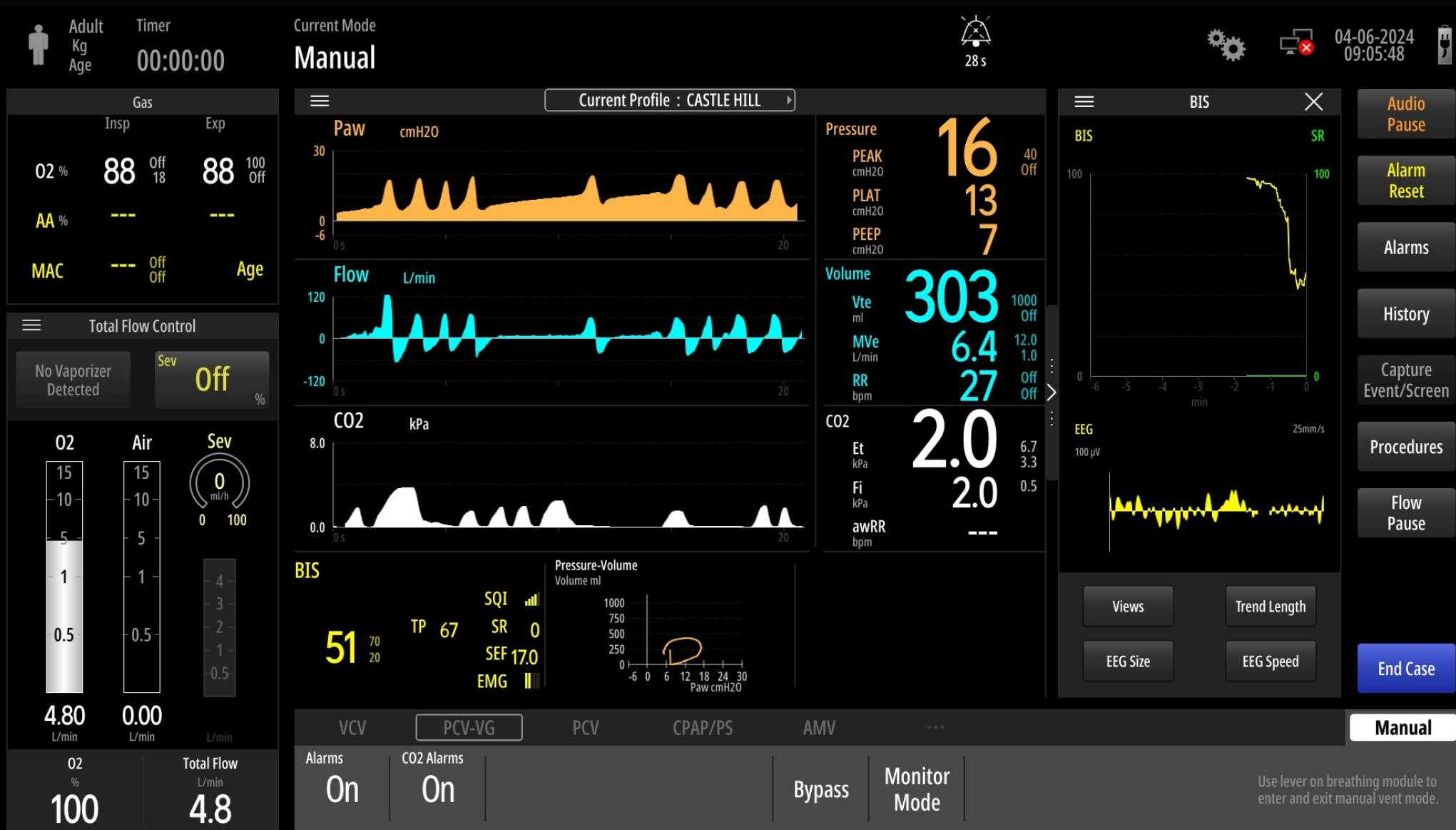
Familiarity



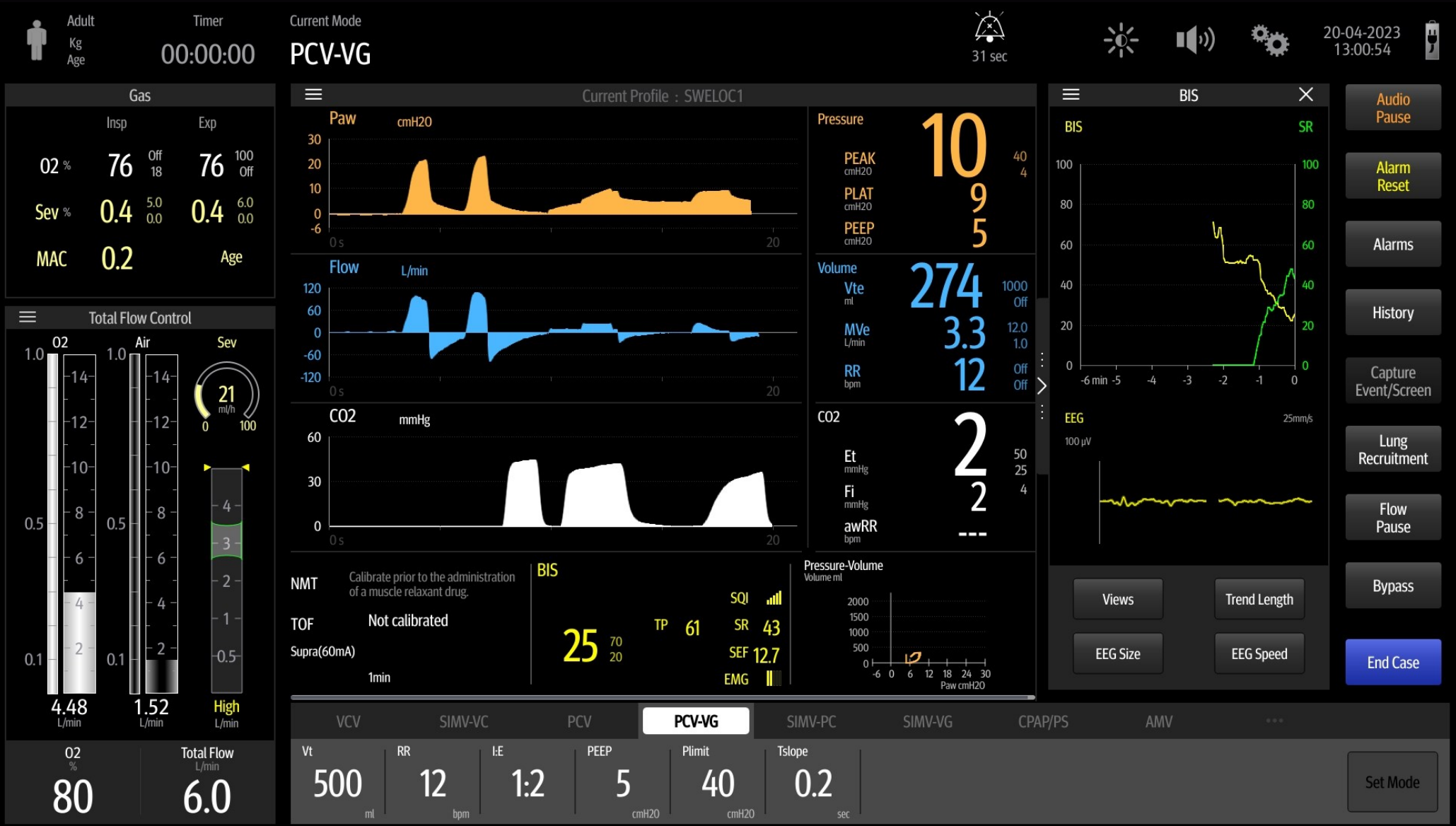
Waveforms
CO2,
Pressure,
Flow
Agent

Ventilator
Modes

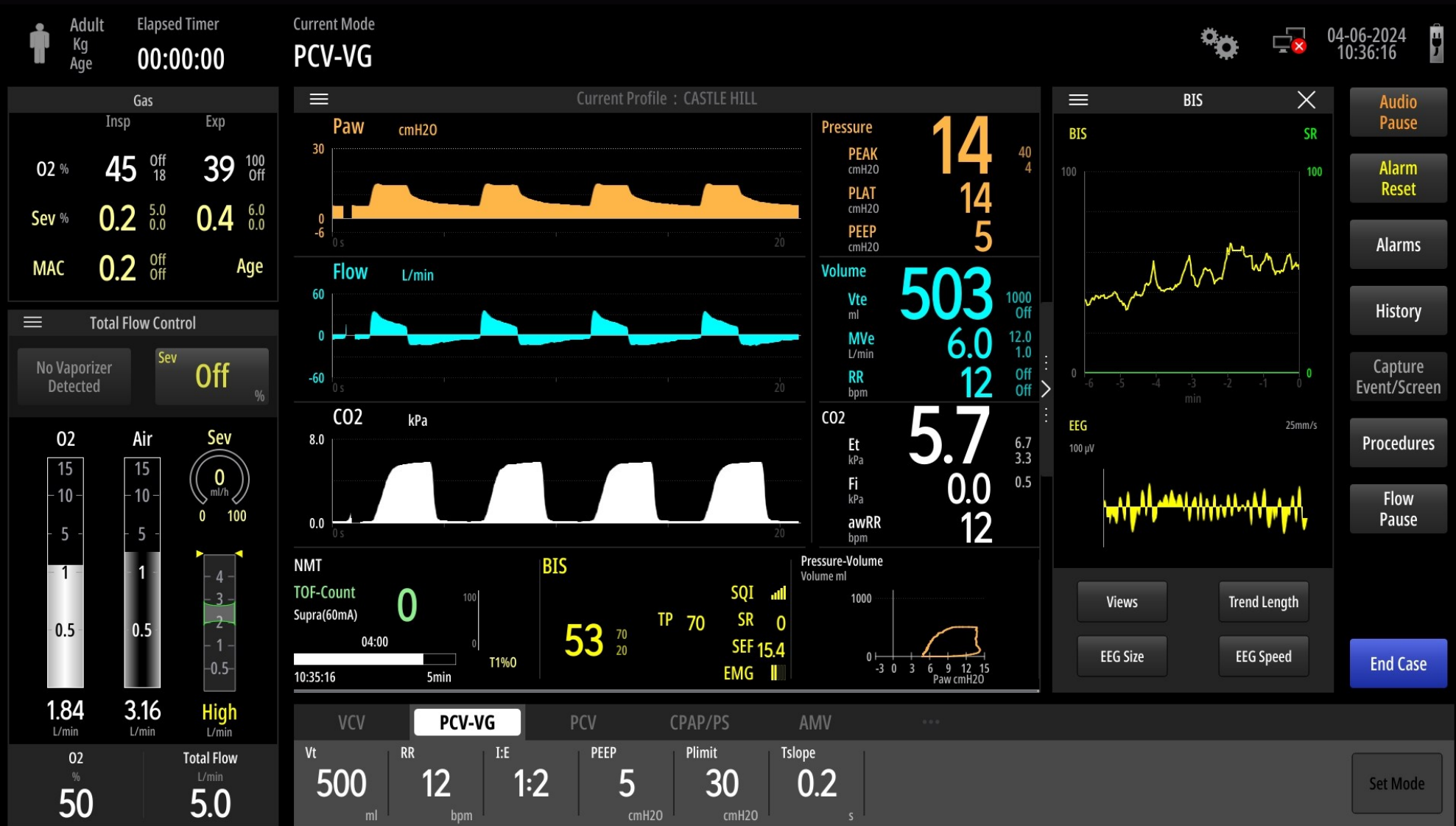
Manual Ventilation



Manual to Auto



Pressure Control - Volume Guaranteed (decelerating flow)



BIS

BIS

SR

100

0

-6

-5

-4

-3

-2

-1

0

min

EEG

100 µV

25mm/s

100

0

0

1

2

3

4

5

6

7

8

9

10

11

12

13

14

15

16

17

18

19

20

Views

Trend Length

EEG Size

EEG Speed

Audio

Pause

Alarm

Reset

Alarms

History

Capture

Event/Screen

Procedures

Flow

Pause

End Case

VCV

PCV-VG

PCV

CPAP/PS

AMV

Vt

RR

I:E

PEEP

Plimit

Tslope

500

12

1:2

5

30

0.2

ml

bpm

cmH2O

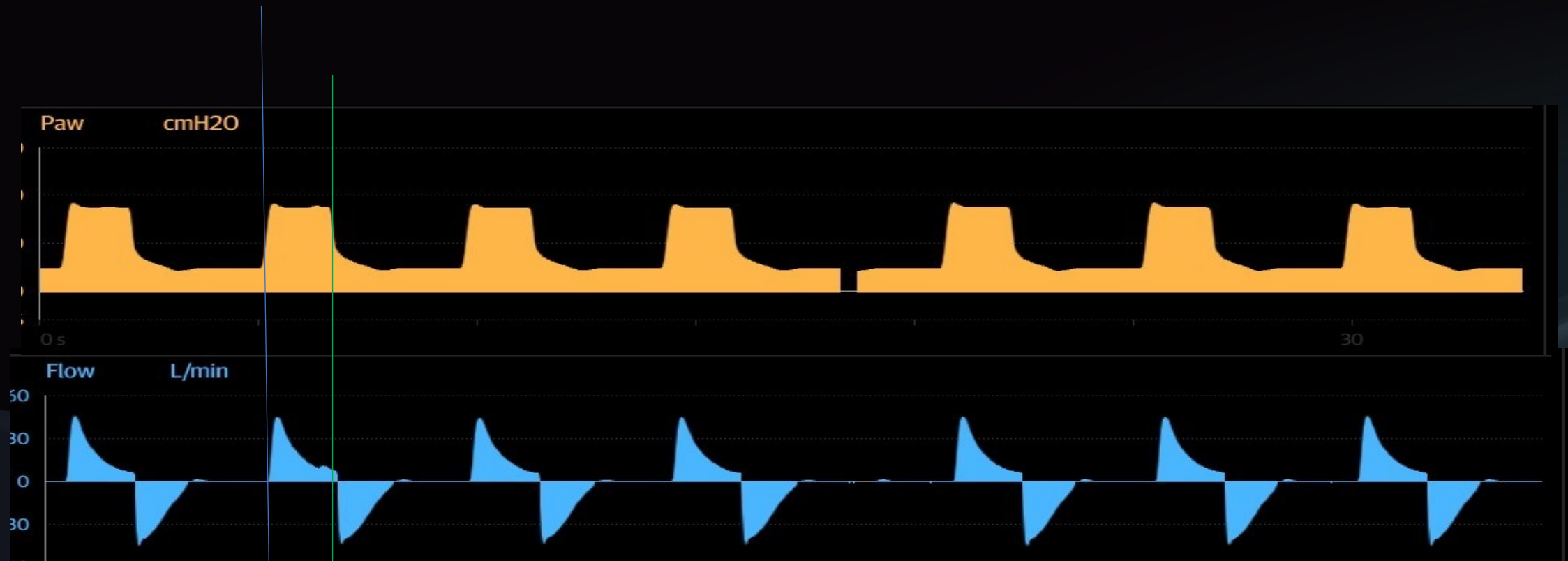
cmH2O

s

Set Mode

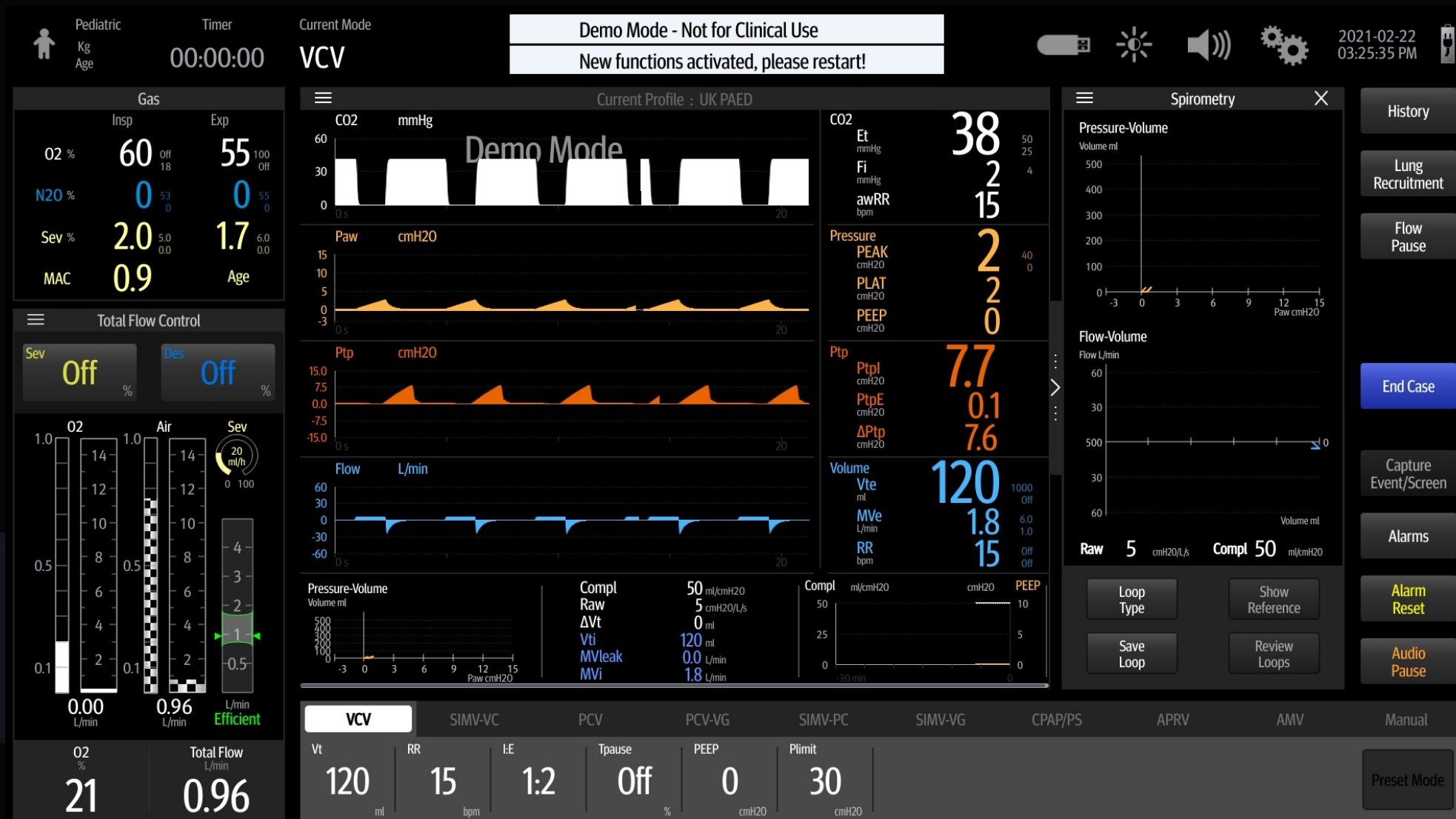
Decelerating Flow (all modes except VCV)

Insp Valve Opens

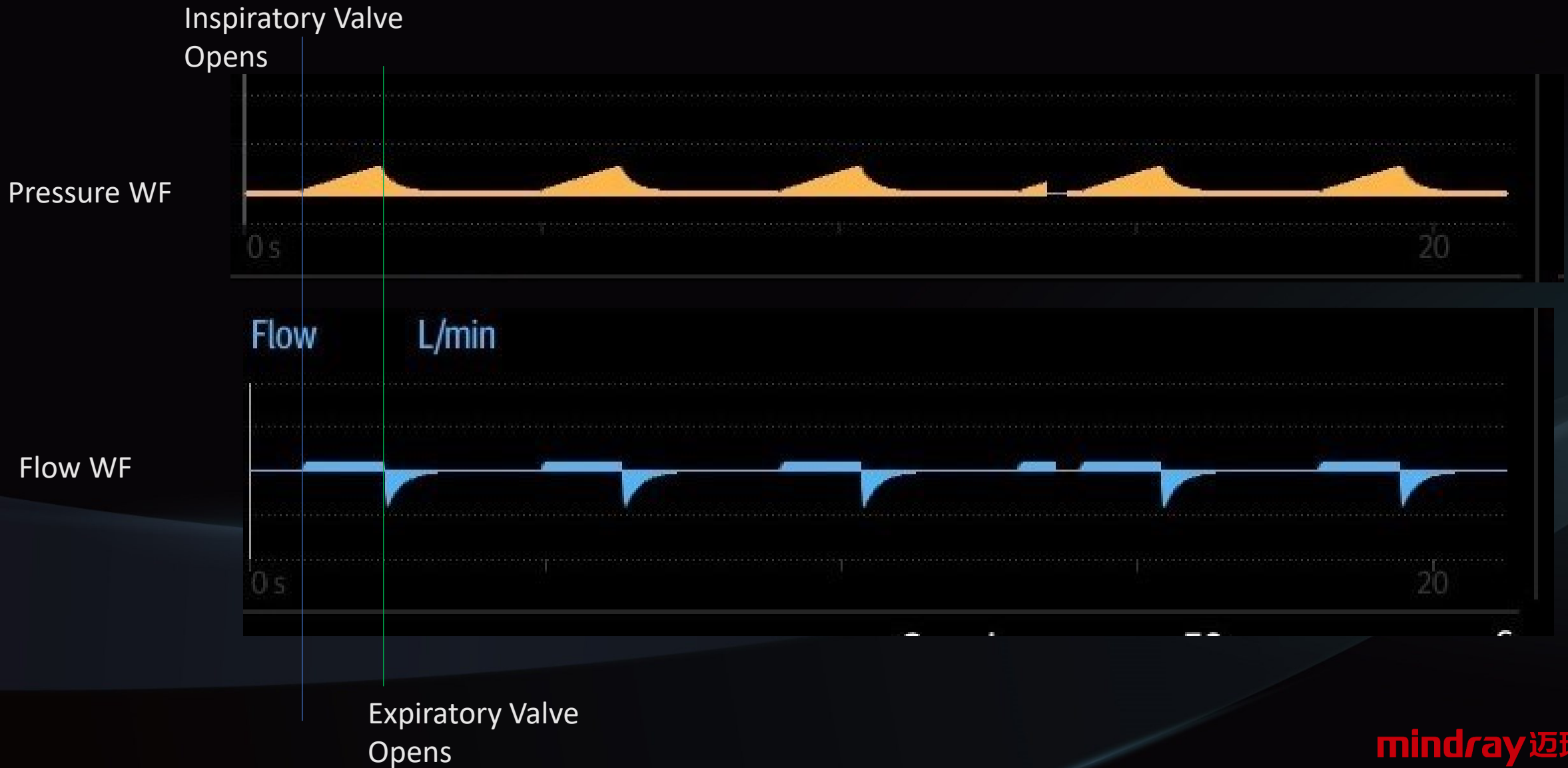


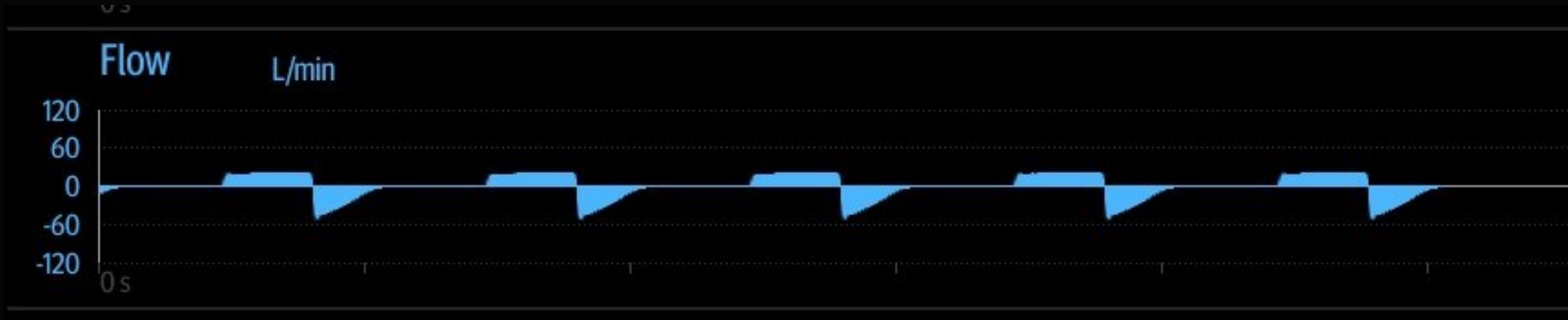
Exp Valve Opens

Volume Control with Constant Flow

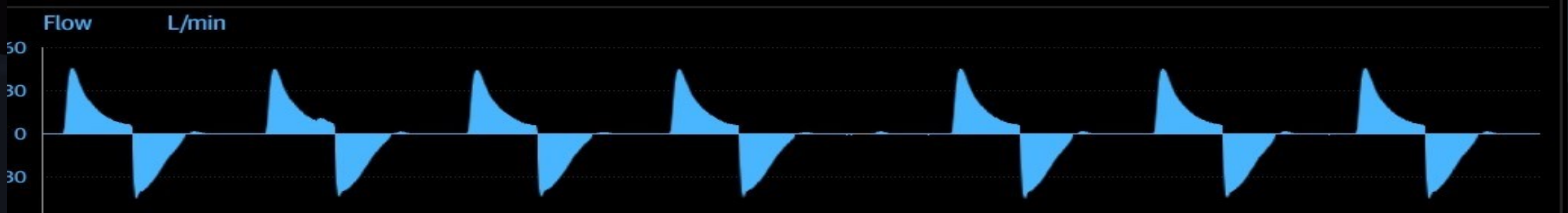


Constant Flow in Volume Control





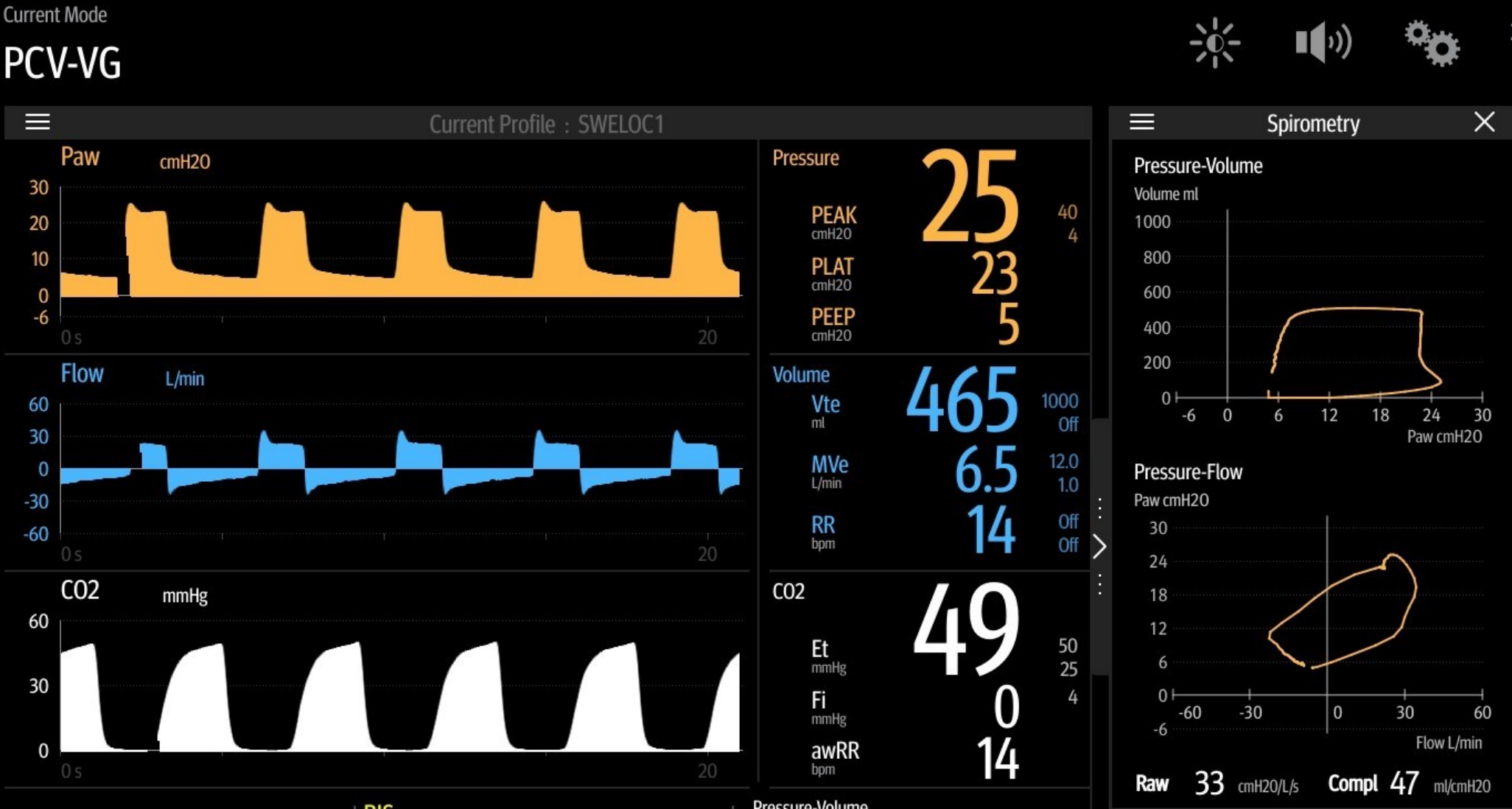
Flow Curve – Constant (above) & Decelerating (below)



Loops & Leaks. 1

[illegible]

Loops & Leaks 2.



Patient Joins In...



✓ **Keep it Simple**

✓ **Follow the Lines**

✓ **Theres a good reason for most things.....**

Thank you !



mindray

Mindray UK
Better Healthcare for All