

Orthopaedic Solutions

Manufacturing Center:
Wuhan Mindray Scientific Co., Ltd.
No.18,Qinglinghe Road, Hongshan District, Wuhan City,
430065 Hubei Province, P.R.China

Sales Center:
Shenzhen Mindray Bio-Medical Electronics Co., Ltd.
Mindray Building, Keji 12th Road South,High-tech Industrial Park
Nanshan, Shenzhen 518057, P.R. China
Tel:+86 755 81887199 Fax:+86 755 26582680
Email:orthopaedics@mindray.com
Website:www.mindray.com

mindray
healthcare within reach

mindray



Clavicle Hook Locking Plate
Hook depth : 12 mm
4-7 holes (L R)
3.5mm cortical screw used with



LCP Clavicle Hook Plate
4-8 holes (L R)
3.5mm locking screw and
3.5mm cortical screw used with



Clavicle Reconstruction Locking Plate
6-12 holes (L R)
3.5mm locking screw used with



LCP Clavicle Reconstruction Plate
6-8 holes (L R)
3.5mm locking screw
3.5mm cortical screw



LCP Proximal Humeral Plate
3-12 holes
3.5mm locking screw
3.5mm cortical screw used with



LCP Cloverleaf Plate
4-9 holes
3.5mm locking screw and
3.5mm cortical screw used with



LCP Small Plate For Humerus
4-12 holes;
3.5mm locking screw and 3.5mm cortical screw used with



Clavicle Hook Plate
4-7 holes (L R)
3.5mm cortical screw used with



Clavicle Reconstruction Plate
6-12 holes (L R)
3.5mm cortical screw used with



Proximal Humeral Plate
4-10 holes (L R)
3.5mm cortical screw and 4.0mm
cancellous screw used with



Small LC-DCP For Humerus
4-12 holes
3.5mm cortical screw used with



Cloverleaf Plate
4-9 holes
3.5mm cortical screw and 4.0mm
cancellous screw used with



4.5mm Cannulated Screw
Length:20-70mm



LCP Distal Medial Humeral Plate
4-12 holes(L R)
2.7mm&3.5mm locking screw
and 3.5mm cortical screw used with



LCP Distal Lateral Humeral Plate
6-10 holes(L R)
2.7mm&3.5mm locking screw and
3.5mm cortical screw used with



LCP Hook Plate
3-5 holes
3.5mm locking screw and
3.5mm cortical screw used with



LCP Olecranon Plate
3-9 holes(L R)
3.5mm locking screw and 3.5mm
cortical screw used with



LCP Small Plate For Ulna and Radius
5-12 holes
2.7mm locking screw and 2.7mm
cortical screw used with



1/3 Tubular Locking Plate
4-10 holes
3.5mm locking screw used with



4.5mm Cannulated Screw
Length:20-70mm



Small LC-DCP For Ulna and Radius
4-12 holes
3.5mm cortical screw used with



One Third Tubular Plate
4-10 holes
3.5mm cortical screw used with



Distal Lateral Humeral Plate
6-9 holes (L R)
3.5mm cortical screw and 4.0mm
cancellous screw used with



Distal Medial Humeral Plate
10-16 holes
3.5mm cortical screw and 4.0mm
cancellous screw used with

External Fixation System

Application:Complete and temporary fixation



Components

1. Pin to Pin Clamp
2. Rod to Rod Coupling
3. Rod to Pin Coupling
4. Connecting Rod
5. Straight post
6. 30° Angled Post
7. Self-drilling pin



LCP T-Plate, Oblique Angled
3-8 holes (L R)
3.5mm locking screw and
3.5mm cortical screw used with



LCP T-Plate, Right Angled
3-8 holes
3.5mm locking screw and
3.5mm cortical screw used with



LCP Distal Radius Plate I
3-5 holes (L R)
2.7mm locking screw and
2.7mm cortical screw used with



LCP Distal Radius Plate IV
3-5 holes (L R)
2.7mm locking screw and
2.7mm cortical screw used with



LCP Distal Radius Plate II
3-4 holes
2.7mm locking screw and
2.7mm cortical screw used with



LCP Distal Radius Plate III
3-4 holes (L R)
2.7mm locking screw and
2.7mm cortical screw used with



LCP Volar Column Distal Radius Plate
3-5 holes (L R)
2.7mm locking screw and
2.7mm cortical screw used with



3.0mm Cannulated Screw
Length:10-50mm



3.0 mm HCS
Length:14-40mm



T-Plate, Oblique Angle
3-6 holes(L R)
3.5mm cortical screw and 4.0mm cancellous screw used with



T Plate(I)



T Plate(II)

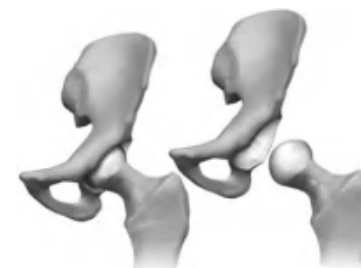


PFNA

Application: Intertrochanteric fractures and subtrochanteric fractures
PFNA Standard $\phi 9.5$ - $\phi 12$; 170-240mm
PFNA Long $\phi 9.5$ - $\phi 11$; 320-420 (L,R)

Femoral Nail

Application: Fractures in the shaft and fractures in the shaft combined with femoral neck fracture $\phi 9.5$ - $\phi 11$; 320-420 (L,R)





Curved Reconstruction Locking Plate

6-16 holes
3.0mm locking screw and
3.5mm cortical screw used with



DHS Plate

3-14 holes
DHS Lag screw, 5.0mm locking screw
and 4.5mm cortical screw used with



LCP Broad Plate, curve

7-12 holes
5.0mm locking screw and
4.5mm cortical screw used with



LCP Broad Plate


6-12 holes
5.0mm locking screw and
4.5mm cortical screw used with



Proximal Femoral Locking Plate


4-14 holes (L R)
6.5mm cannulated locking screw, 5.0mm locking screw and 4.5mm cortical screw

6.5mm Cannulated Screw

 Long Thread 32mm Length: 45-115mm

 Short Thread 16mm Length: 45-115mm

7.5mm Cannulated Screw

 Long Thread 32mm Length: 45-120mm

 Short Thread 16mm Length: 45-120mm



Curved Reconstruction Plate

4-18 holes
3.5 cortical screw used with



Broad LC-DCP

4-16 holes
4.5 cortical screw used with



Proximal Femoral Plate

4-11 holes
4.5 cortical screw and
6.5mm cancellous screw used with

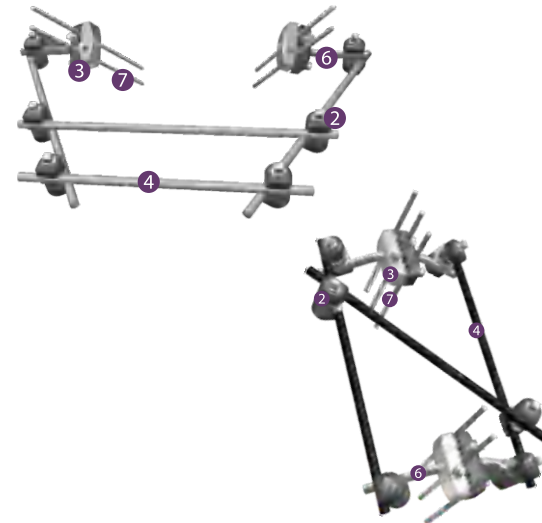


DHS Plate

3-14 holes
DHS Lag screw, 4.5mm cortical screw
and 6.5mm cancellous screw used with

External Fixation System

Application: Complete and temporary fixation



Components

1. Pin to Pin Clamp
2. Rod to Rod Coupling
3. Rod to Pin Coupling
4. Connecting Rod
5. Straight post
6. 30° Angled Post
7. Self-drilling pin



LCP Distal Femoral Plate
4-13 holes (L R)
5.0mm locking screw and
4.5mm cortical screw used with



Distal Femoral Locking Plate
4-12 holes (L R)
6.5mm cancellous screw,
5.0mm locking screw and 4.5mm cortical
screw used with



LCP Proximal Lateral Tibial Plate
5-13 holes (L R)
5.0mm locking screw and
4.5mm cortical screw used with



LCP Proximal Medial Tibial Plate
5-10 holes (L R)
5.0mm locking screw and
4.5mm cortical screw used with



LCP Proximal Tibial Plate
5-10 holes (L R)
5.0mm locking screw and
4.5mm cortical screw used with



LCP Narrow Plate
6-14 holes
5.0mm locking screw and
4.5mm cortical screw used with



Distal Femoral Plate
4-13 holes (L R)
4.5mm cortical screw and
6.5mm cancellous screw used with



Proximal Lateral Tibial Plate
4-13 holes (L R)
4.5mm cortical screw and
6.5mm cancellous screw used with



Proximal Medial Tibial Plate
4-10 holes
4.5mm cortical screw and
6.5mm cancellous screw used with



Proximal Tibial Plate
4-10 holes (L R)
4.5mm cortical screw and
6.5mm cancellous screw used with



Narrow LC-DCP
4-14 holes
4.5mm cortical screw used with



DCS
3-14 holes
DHS lag screw, 4.5mm cortical screw
and 6.5mm cancellous screw used with

4.5mm Cannulated Screw
Length:20-70mm



6.5mm Cannulated Screw



Long Thread 32mm Length:45-115mm



Short Thread 16mm Length:45-115mm

6.5mm Cannulated Screw



Long Thread 32mm Length:45-120mm



Short Thread 16mm Length:45-120mm

Tibial Nail ,Cannulated

Comprehensive Solutions for Tibial fractures
 φ8.2-φ11, 240-360mm



External Fixation System

Application: Complete and temporary fixation



Components

- 1.Pin to Pin Clamp
- 2.Rod to Rod Coupling
- 3.Rod to Pin Coupling
- 4.Connecting Rod
- 5.Straight post
- 6.30° Angled Post
- 7.Self-drilling pin



LCP Distal Medial Tibial Plate

5-14 holes(L R)
 3.5mm locking screw and
 3.5mm cortical screw used with



LCP Distal Lateral Tibial Plate

4-12 holes(L R)
 3.5mm locking screw and
 3.5mm cortical screw used with



LCP Distal Medial Tibial Plate (II)

6-12 holes(L R)
 3.5mm locking screw and
 3.5mm cortical screw used with



LCP Distal Lateral Fibular Plate

3-7 holes(L R)
 2.7mm&3.5mm locking screw and
 3.5mm cortical screw used with



Distal Medial Tibial Plate

4-12 holes(L R)
 4.5mm cortical screw and
 6.5mm cancellous screw used with



Distal Lateral Tibial Plate

5-13 holes(L R)
 4.5mm cortical screw and
 6.5mm cancellous screw used with



Distal Lateral Fibular Plate

3-8 holes(L R)
 3.5mm cortical screw and
 4.0mm cancellous screw used with



Calcaneal Locking Plate

3.5mm locking screw used with



Calcaneal Plate

3.5mm cortical and 4.0mm cancellous screw



3.5mm Cannulated Screw Length:10-50mm



4.5mm Cannulated Screw Length:20-70mm



4.5 mm Headless Compression Screw Length:30-68mm

Mini Plates

Application: Fractures of the phalanges, metacarpals and wrist bones used with 2.0mm cortical screw



Straight Plate



Z Plate



L Plate



Oblique L Plate



T Plates (I) (2 Holes Head)



T Plates (I) (3 Holes Head)



T Plate, Oblique angle



Y Plate



Strut Plate

1.5mm Micro Plates

1.5mm cortical screw used with



Micro Straight Plate



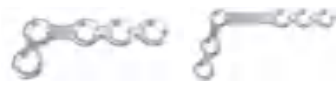
Micro Y Plate



Micro Double Y Plate



Micro T Plate



Micro L Plate

2.5mm Reconstruction Plates

2.5mm cortical screw used with



Mandibular Plate



Mandibular Reconstruction Plate

2.0mm Mini Plates

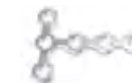
used with 2.0mm cortical screw



Mini Straight Plate



Mini Straight Plate II



Mini T Plate



Mini Y Plate



Mini Double Y Plate



Mini L Plate, 100°



Mini L Plate, Long



Mini L Plate



Curved Plate



Curved Plate with bar



NEOS Primary Stem



NEOS Revision Stem



Cemented Stem



Cementless Stem

Acetabular System



Acetabular Cup with HA coating



All-Polyethylene Cup

Heads



Metal Head



Ceramic Head



Bipolar



Knee System



Femoral Component



Tibial Plate



Tibial Articular Surface



Patella



Oscillating Saw System



Drilling System



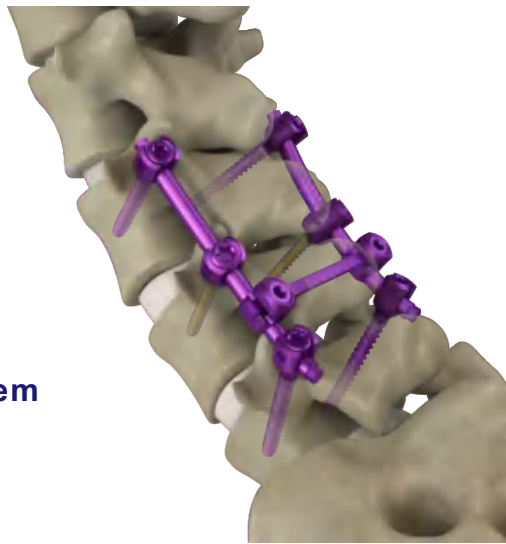
Cannulated Drilling System



Anterior Cervical Plate



Wound Drainage System



GSS Spine System



Artificial bone



MR-VA Anterior Clavicle Locking Plate



MR-VA Elbow System



MR-VA Distal Radius Plates

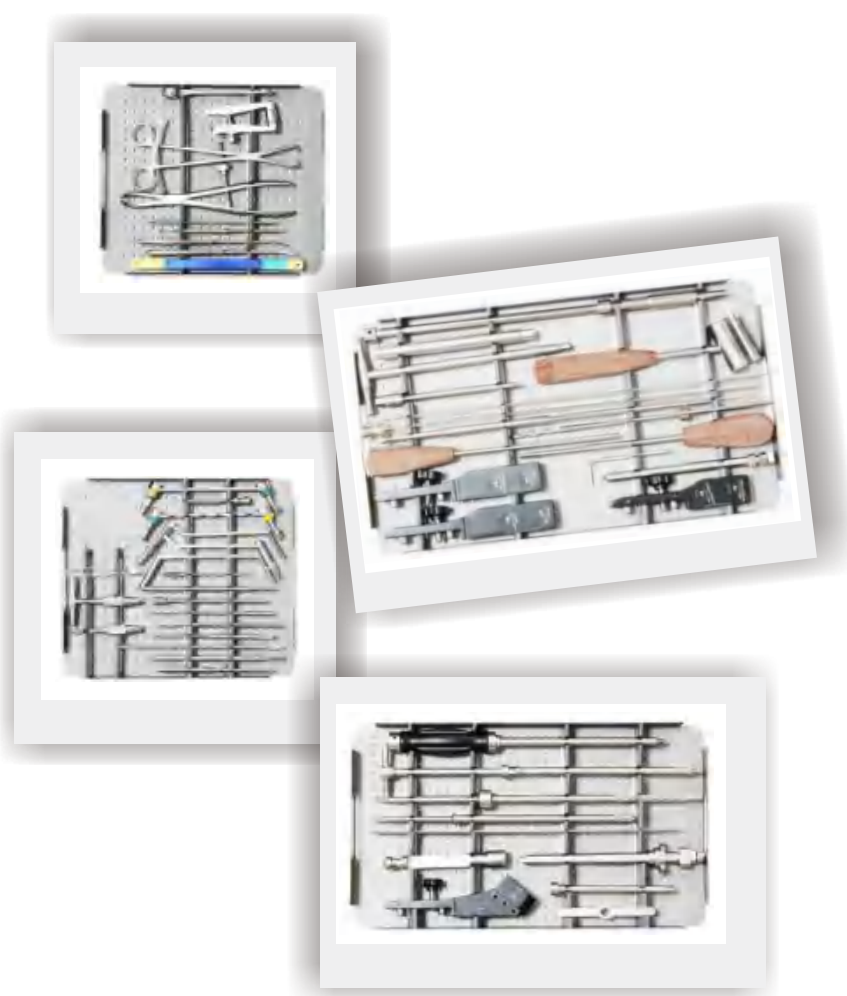


2.0mm,2.4mm&2.7mm Locking Plates

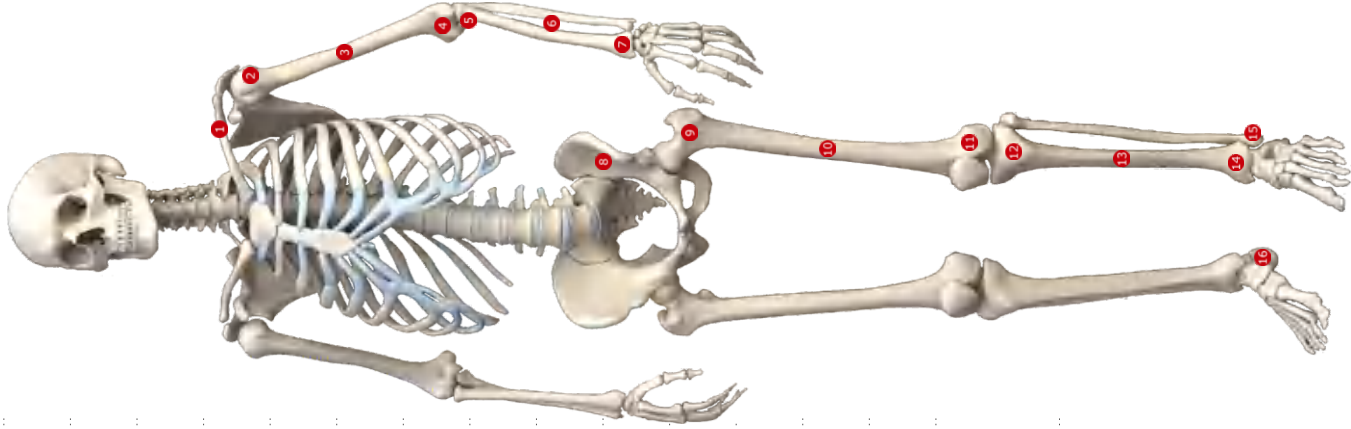
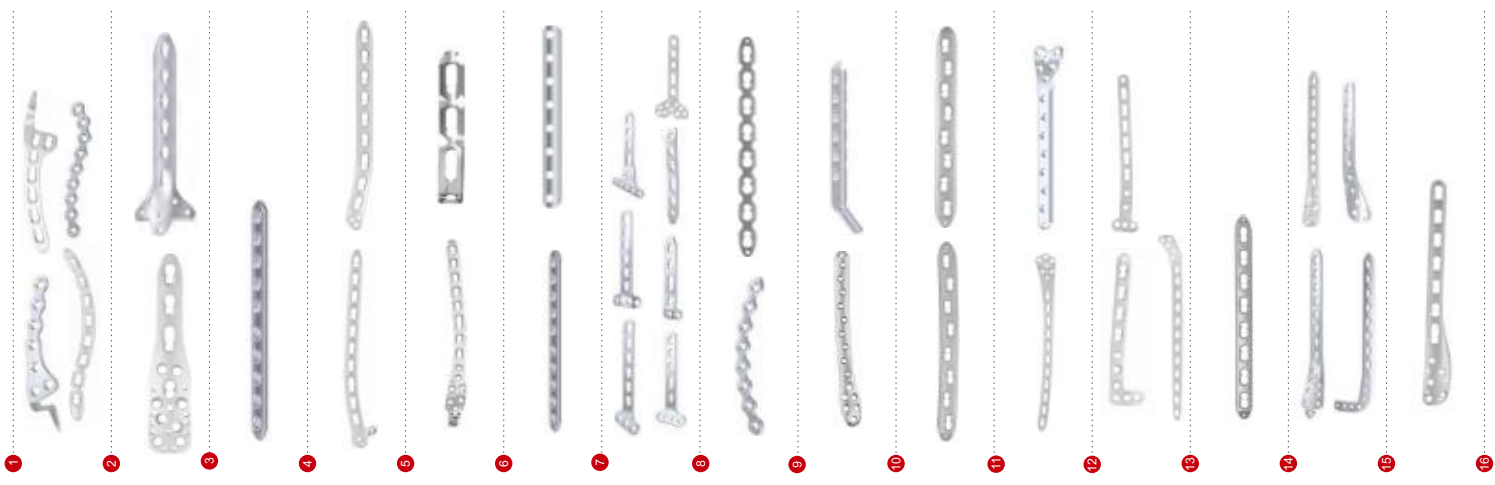


MR-OSTO
Femoral Plate

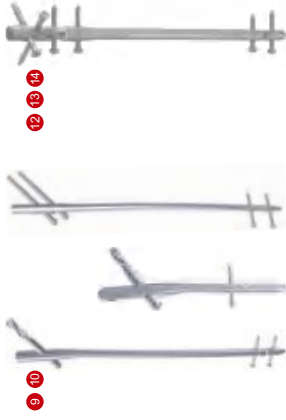
MR-OSTO
Tibial Plate



Bone Plates



Intramedullary Nail



Cannulated Screws

