

Accessories Catalog



mindray

Welcome to the Mindray North America Parts and Accessories Catalog

This catalog will provide you with the parts and accessories that connect to your Mindray Anesthesia Delivery System, Bedside Monitors, or Distributed Monitoring System. Every Mindray product is built with patients and clinicians in mind, to ensure they are user and patient-friendly. Our parts and accessories follow this approach too so that you can expect exceptional service, focus, and quality when relying on them to deliver patient care.

About Mindray

Mindray is a leading global developer, manufacturer, and supplier of medical devices whose mission is to advance medical technologies to make healthcare more accessible by delivering high-quality, richly featured medical products. Mindray provides solutions in three core businesses: Patient Monitoring and Life Support, Medical Imaging, and In-Vitro Diagnostics. With corporate headquarters located in Shenzhen, China, and 40 international subsidiaries around the globe, Mindray has approximately 10,000 employees worldwide. Eight global R&D centers and an industry leading investment of 10% of annual revenue into research and development further demonstrate Mindray's commitment to innovation and advancing technology in a global market. Today, Mindray products and services can be found in healthcare facilities in over 190 countries and regions.

Exceptional Service and Support

Clinical education specialists provide your staff with comprehensive, on-site product training and in-service. Our dedicated field service CARE Team and in-house technical support organization represent one of the largest direct service teams in the industry.

Finding the Right Part

This catalog is designed to make finding the right part easy. Chapters are organized by specific product categories. Simply locate the type of part you are looking for under the appropriate category. Not sure which part works with which product? No problem. Each accessory is clearly marked for its corresponding medical device.

How to Order

We have made placing orders for parts and accessories easy. You can shop online or contact our customer service department. To shop online 24 hours a day, 7 days a week, log on to: <http://store.na.mindray.com>
Our online store is available only to US customers.

You can also contact our customer service department at 1-800-288-2121 (Press 3) Monday – Friday, 8:30 am - 6:00 pm EST, or email customerservice@mindray.com.

Buy your accessories from a company you can trust, that offers service you can depend on, and provides the support you expect.

NOTE: This catalog is not an Operating Instructions Manual. This catalog will assist you in identifying the correct parts and accessories to connect to your Mindray anesthesia delivery system, bedside monitor, or Central Station. For Operating Instructions, please refer to the Operating Instructions Manual. Warnings, Precautions, and Notes can also be found in the Operating Instructions.

Anesthesia	
AGSS	1
Breathing Systems	2
Airway Adapters	3
Battery	3
Breathing System	3
O ₂ Canisters	4
Flow Sensor	5
Gas Cylinders	6
Gas Sampling Lines	6
Hoses	7
Mounts	10
Networking USB Storage	13
O ₂ Sensor	14
Reference Cards	14
Vaporizers	15
Water Traps	17
Batteries	18
BeneLink Cables	21
Cardiac Output Cables	23
CO ₂	
Airway Adapters	24
Cannulas	24
Sampling Lines	25
Water Traps	25
Data Storage	26
ECG	
Cables	27
ESIS Cables	28
Neonate Cables	29
Cable Adapters	30
Electrodes	30
Lead Wires – 3 Lead Pinch	30
Lead Wires – 3 Lead Snap	32
Lead Wires – 5 Lead Pinch	33
Lead Wires – 5 Lead Snap	34
Lead Wires – 6 Lead	36
Lead Wires – 12 Lead	36
Single Patient Use Lead Wires	37
EEG	38
ICP	39
Invasive Blood Pressure	
IBP Cables	40
iView	42
Miscellaneous Accessories	43
Miscellaneous Cables	
Communication Cables	45
Defib Cables	45
Docking Station Cables	45
Ethernet (CS1) Cables	46
Gas Module Cables	47
Grounding Cable	47
IABP Cables	47
Nurse Call Cables	48
Power Cords	48
Serial Port Cables	48
SMR Cables	49
USB Cables	49
Video Cables	49
Mounts	
Bedrail Mounts	51
Miscellaneous Mounts	52
Mounting Brackets and Plates	53
Remote Display (RD1) Mounts and Displays	54
SMR Mounts	55
Wall Mounts	55
Non-Invasive Blood Pressure	
Neonate Blood Pressure Cuffs	59
NIBP Hoses	60
Reusable Blood Pressure Cuffs	61
Single Patient Use Blood Pressure Cuffs	62
NMT Accessories	64
Paper	65
Pulse Oximetry	
DPM SpO ₂	66
Masimo SET®	68
Nellcor™	73
Nonin	73
Rolling Stands	75
Rolling Stand Parts	
rSO ₂	76
ScVO ₂	79
Temperature	
Disposable Mindray Temperature Probes	78
Disposable Temperature Probes – 400 Series	78
Reusable Mindray Temperature Probes	79
Reusable 400 Series Temperature Probes	81
SmarTemp Probes	82
Welch Allyn® SureTemp® Plus	
Thermometer Module and Accessories	83

Scavenging AGSS Accessories



Waste Gas Scavenger Assembly

115-023175-00

Waste Gas Scavenger Assembly

Compatible with A3, A4, A5, A7



AGSS Transfer Tube

801-0631-00074-00

AGSS Transfer Tube

Compatible with A3, A4, A5, A7



Waste Gas Hose for Gas Module to Quick Release Fitting

115-052160-00

Waste Gas Hose for Gas module to Quick Release Fitting

Compatible with A3, A4, A5



Sample Gas Hose for Gas Module to Quick Release Fitting 1.2'

115-052161-00

Waste Gas Hose for Gas Module to Quick Release Fitting

Compatible with A7, A8, A9



Sample Gas Hose for Gas Module to Quick Release Fitting

115-052370-00

Waste Gas Hose for Gas Module to Quick Release Fitting

Compatible with A7, A8, A9

Passive Scavenging Kit

115-037548-00

Passive Scavenging Kit

Compatible with A-Series



AGSS 3 Way Connector Assembly (ACGO)

115-026796-00

AGSS 3 Way Connector Assembly

Compatible with A3, A4, A5, A7

**AGSS 3 Way Connector Assembly (for AG module)**

115-052162-00

AGSS 3 Way Connector Assembly for AG Module

Compatible with A7, A8, A9

Breathing System**Bellows Dome**

801-0631-00054-00

Bellows Dome, A-Series

Compatible with A3, A4, A5, A7

**Bellows Assembly**

0601-30-78968

Bellows Assembly, A-Series

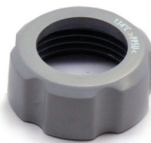
Compatible with A3, A4, A5, A7

**Insp/Exp Connector**

801-0631-00057-00

Insp/Exp Connector, A-Series

Compatible with A-Series

**Insp/Exp Connector Rotary Cap**

801-0631-00059-00

Insp/Exp Connector Rotary Cap, A-Series

Compatible with A-Series

**Water Collection Cup**

801-0631-00058-00

Water Collection Cup, A-Series

Compatible with A-Series

Dynamic Gas Scavenging System (DGSS)

082-002748-00

Dynamic Gas Scavenging System (DGSS)

Compatible with A3, A4, A5, A7

Airway Adapters



Dryline™ Airway Adapter – Elbow

115-043021-00

Dryline airway adapter, elbow, box of 10

Compatible with A-Series, ePM 10M, ePM 12M, N12, N15, N17, N19, N22



Dryline™ Airway Adapter – Straight

115-043020-00

Dryline airway adapter, straight, box of 10

Compatible with A-Series, ePM 10M, ePM 12M, N12, N15, N17, N19, N22

Battery



Lithium-ion Battery

115-018012-00

Lithium-ion Battery, 11.1V

Compatible with A3, A4, A5, A7

Breathing System



Check Valve Dome

801-0631-00061-00

Check valve dome, A-Series

Compatible with A3, A4, A5, A7



Check Valve

801-0631-00104-00

Check valve, A-Series

Compatible with A-Series



Check Valve Cover

043-009522-00

Check valve cover

Compatible with A8, A9

**Bag Arm - Fixed Height**

115-048600-00

Bag Arm - Fixed Height, A-Series

Compatible with A-Series

**Bag Arm - Flexible**

115-048035-00

Bag Arm - Flexible Height, A-Series

Compatible with A-Series

**Airway Pressure Gauge**

115-051819-00

Airway pressure gauge, A-Series

Compatible with A3, A4, A5, A7

**O₂ Port Cover Kit**

115-016612-00

O₂ Port Cover Kit

Compatible with A3, A4, A5, A7

O₂ Canisters**CO₂ Absorbent Canister**

801-0631-00066-00

CO₂ Absorbent Canister, A-Series

Compatible with A3, A4, A5, A7

**CO₂ Bypass Assembly**

115-036378-00

CO₂ Bypass Assembly, A-Series

Compatible with A3, A4, A5, A7



CO₂ Absorber Hose 801-0631-00092-00
 CO₂ Absorber Hose, A-Series
 Compatible with A3, A4, A5, A7



CO₂ Absorber Base with Drain Valve 801-0631-00100-00
 CO₂ Absorber Base with Drain Valve, A-Series
 Compatible with A3, A4, A5, A7



CO₂ Absorbent Canister - Pre-Pak 0683-00-0326-12
 CO₂ Absorbent, Pre-Pak (12)
 Compatible with A-Series



Sodalime Absorber Canister 115-066854-00
 Absorbent Canister, A8/A9
 Compatible with A8, A9



Bypass Assembly 115-066853-00
 Bypass Assembly, A8/A9
 Compatible with A8, A9

Flow Sensor



Expiratory Flow Sensor Assembly 801-0631-00056-00
 Expiratory Flow Sensor Assembly
 Compatible with A3, A4, A5, A7



Inspiratory Flow Sensor Assembly 801-0631-00060-00
 Inspiratory Flow Sensor Assembly
 Compatible with A3, A4, A5, A7



Expiratory Flow Sensor Assembly

115-04508-00

Expiratory Flow Sensor Assembly

Compatible with A8, A9



Inspiratory Flow Sensor Assembly

115-04507-00

Inspiratory Flow Sensor Assembly

Compatible with A8, A9

Gas Cylinders

Washer, Seal for Cylinder

0348-00-0185

Washer, Seal for Cylinder

Compatible with A-Series



Gas Cylinder Wrench

115-033063-00

Gas Cylinder Wrench

Compatible with A-Series

Gas Sampling Lines

Sampling Line – Adult

115-043017-00

Sampling line, Adult, 8.2' (2.5 m), box of 25

Compatible with A-Series



Sampling Line – Neonate

115-043018-00

Sampling line, Neonatal, 8.2' (2.5 m), box of 25

Compatible with A-Series

Hoses



Air Hose - Chemetron

0004-00-0079-12

Air Gas Supply Hose 15' Chemetron

Compatible with A-Series



Air Hose - DISS Female

0004-00-0079-14

Air Gas Supply Hose 15' Diss Female

Compatible with A-Series



Air Hose - Ohmeda

0004-00-0079-11

Air Gas Supply Hose 15' Ohmeda

Compatible with A-Series



Air Hose - Puritan Bennett

0004-00-0079-13

Air Gas Supply Hose 15' Puritan Bennett

Compatible with A-Series



EVAC Hose - Chemetron

0004-00-0081-12

EVAC Gas Supply Hose 15' Chemetron

Compatible with A-Series



EVAC Hose - DISS Female

0004-00-0081-14

EVAC Gas Supply Hose 15' Diss Female

Compatible with A-Series



EVAC Hose - Ohmeda

0004-00-0081-11

EVAC Gas Supply Hose 15' Ohmeda

Compatible with A-Series

**EVAC Hose - Puritan Bennett**

0004-00-0081-13

EVAC Gas Supply Hose 15' Puritan Bennett

Compatible with A-Series

**EVAC/VAC Hose - Chemetron**

0004-00-0081-32

EVAC DISS to VAC Gas Supply Hose 15' Chemetron

Compatible with A-Series

**EVAC/VAC Hose - DISS Female**

0004-00-0081-34

EVAC DISS to VAC Gas Supply Hose 15' Diss Female

Compatible with A-Series

**EVAC/VAC Hose - Ohmeda**

0004-00-0081-31

EVAC DISS to VAC Gas Supply Hose 15' Ohmeda

Compatible with A-Series

**EVAC/VAC Hose - Puritan Bennett**

0004-00-0081-33

EVAC DISS to VAC Gas Supply Hose 15' Puritan Bennett

Compatible with A-Series

**N₂O Hose - Chemetron**

0004-00-0078-12

N₂O Gas Supply Hose 15' Chemetron

Compatible with A-Series

**N₂O Hose - DISS Female**

0004-00-0078-14

N₂O Gas Supply Hose 15' Diss Female

Compatible with A-Series



N₂O Hose - Ohmeda

0004-00-0078-11

N₂O Gas Supply Hose 15' Ohmeda

Compatible with A-Series



N₂O Hose - Puritan Bennett

0004-00-0078-13

N₂O Gas Supply Hose 15' Puritan Bennett

Compatible with A-Series



O₂ Hose - Chemetron

0004-00-0077-12

O₂ Gas Supply Hose 15' Chemetron

Compatible with A-Series



O₂ Hose - DISS Female

0004-00-0077-14

O₂ Gas Supply Hose 15' Diss Female

Compatible with A-Series



O₂ Hose - Ohmeda

0004-00-0077-11

O₂ Gas Supply Hose 15' Ohmeda

Compatible with A-Series



O₂ Hose - Puritan Bennett

0004-00-0077-13

O₂ Gas Supply Hose 15' Puritan Bennett

Compatible with A-Series



VAC Hose - Chemetron

0004-00-0080-14

VAC Gas Supply Hose 15' Chemetron

Compatible with A-Series



VAC Hose - DISS Female

0004-00-0080-16

VAC Gas Supply Hose 15' Diss Female

Compatible with A-Series



VAC Hose - Ohmeda

0004-00-0080-13

VAC Gas Supply Hose 15' Ohmeda

Compatible with A-Series



VAC Hose - Puritan Bennett

0004-00-0080-15

VAC Gas Supply Hose 15' Puritan Bennett

Compatible with A-Series

Mounts



Monitor Mounting Arm, Pivot, 12"

0436-00-0169

Monitor Mounting Arm, Pivot, 12"; used with compatible mounting plate to mount the monitor to the A-Series

Compatible with A-Series, DPM 6, Passport 12, Passport 12m, ePM 12M

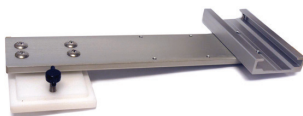


Monitor Mounting Arm, Pivot, 16"

0436-00-0198

Monitor Mounting Arm, Pivot, 16" ; used with compatible mounting plate to mount the monitor to the A-Series

Compatible with A-Series, DPM 6, DPM 7, Passport 12, Passport 12m, Passport 17m, ePM 12M



Mount, Suction Canister

0436-00-0259

Mount, Suction Canister

Compatible with A-Series



Mounting Arm, Suction Regulator

0436-00-0207

Mounting Arm, Suction Regulator

Compatible with A-Series



<p>Regulator, Patient Suction</p> <p>Regulator, Patient Suction</p> <p>Compatible with A-Series</p>	0992-00-0256
<p>Articulating Arm with Tray, 12" x 12"</p> <p>Articulating Arm with Tray 12" x 12"</p> <p>Compatible with A-Series</p>	034-000460-00
<p>Top Mounting Kit, Passport 17m</p> <p>Mounts patient monitor to top of A-Series</p> <p>Compatible with A-Series, DPM 7, Passport 17m</p>	115-004003-00
<p>Top Mounting Kit, Passport 12m</p> <p>Mounts patient monitor to top of A-Series</p> <p>Compatible with A-Series, DPM 6, Passport 12m</p>	115-004004-00
<p>CPU Mount 1.5" - 3" / 3.8 - 7.6 cm wide</p> <p>Mounts CPU to side of the A-Series</p> <p>Compatible with A-Series</p>	008-000468-01
<p>CPU Mount 3" - 4.5" / 7.6 - 11.4 cm wide</p> <p>Mounts CPU to side of the A-Series</p> <p>Compatible with A-Series</p>	008-000468-00
<p>Spring Hook</p> <p>Hook supports additional storage of various accessories</p> <p>Compatible with A-Series</p>	115-021015-00

AIMS Mounting Arm 034-000288-00

Mounting arm to support AIMS / EMR display

Compatible with A-Series

Top Shelf Mounting Kit 115-070794-00

Mounts patient monitor to top of A-Series

Compatible with A-Series, N15, N17, ePM 15M

Top Shelf Mounting Kit 115-074073-00

Mounts patient monitor to top of A-Series

Compatible with A-Series, N12, ePM 12M



Hook 043-010620-00

Hook supports additional storage of various accessories

Compatible with A8, A9

Variable Mount Bracket A8/A9 115-066029-00

Variable Mount Bracket

Compatible with N12, N15, N17

Fixed Mount Bracket A8/A9 115-066074-00

Fixed Mount Bracket

Compatible with N12, N15, N17

Fixed Mount Bracket A8/A9 115-069443-00

A8/A9 Fixed Mount Bracket

Compatible with N19, N22

Top Shelf Upgrade Kit 115-069445-00

A8/A9 Mount Top Shelf Upgrade Kit

Bracket Kit for A-Series Mounts 115-070794-00

Fixed Bracket Kit

Compatible with N15, N17

Bracket Kit for A-Series Mounts 115-074073-00

Fixed Bracket Kit

Compatible with N12

Networking and USB Storage



CAT 5 Ethernet Cable, Patch, STP, 6' 0012-00-1274-06

CAT 5 Ethernet Cable, Patch, STP, 6' (1.83m)

Compatible with A-Series



CAT 5 Ethernet Cable, Crossover, STP, 6' 0012-00-1392-06

CAT 5 Ethernet Cable, Crossover, STP, 6' (1.83m)

Compatible with A-Series



USB Flash Drive 8 GB 023-001673-00

USB Flash Drive 8 GB

Compatible with A-Series, Passport 12m, Passport 17m, VS9

USB Wired Mouse 023-000361-00

USB Wired Mouse

O₂ Sensors



O₂ Sensor

040-001270-00

O₂ Sensor, A-Series

Compatible with A-Series



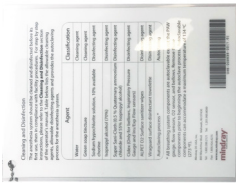
O₂ Sensor Cable and Housing

801-0631-00102-00

O₂ Sensor Cable and Housing

Compatible with A3, A4, A5, A7

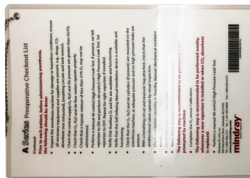
Reference Cards



Disinfection/Cleaning Quick Reference Card

115-040734-00

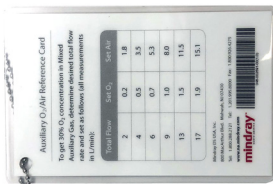
Compatible with A3, A4, A5, A7



A-Series Pre-Operation Checklist Card

801-0631-00081-00

Compatible with A3, A4, A5, A7



A-Series Auxiliary O₂/Air Reference Card

801-0631-00082-00

Compatible with A3, A4, A5, A7

Vaporizers



Dräger Vapor 2000 Isoflurane Bottle Adapter 0004-00-0101

Isoflurane Dräger Fill Bottle Adapter

Compatible with A3, A4, A5, A7, A8



Dräger Vapor 2000 Isoflurane Vaporizer 0992-00-0149

Dräger Vapor 2000 Isoflurane Vaporizer with Dräger Fill Adapter

Compatible with A3, A4, A5, A7, A8



Dräger Vapor 2000 Sevoflurane Bottle Adapter 0004-00-0100

Sevoflurane Dräger Fill Bottle Adapter

Compatible with A3, A4, A5, A7, A8



Dräger Vapor 2000 Sevoflurane Vaporizer 0992-00-0148

Dräger Vapor Sevoflurane Vaporizer with Dräger Fill Adapter

Compatible with A3, A4, A5, A7, A8



Dräger D-Vapor Desflurane Vaporizer 040-001997-00

Dräger D-Vapor Desflurane Vaporizer

Compatible with A3, A4, A5, A7, A8



V60 Sevoflurane Vaporizer 115-025532-00

V60 Sevoflurane Vaporizer with Quick-Fil Adapter

Compatible with A3, A4, A5, A7, A8



V60 Quik-Fil Sevoflurane Bottle Adapter 115-026747-00

Sevoflurane Quik-Fill Bottle Adapter

Compatible with A3, A4, A5, A7, A8



V60 Quik-Fil Drainage Funnel for Sevoflurane Vaporizer

040-000067-00

Sevoflurane Drainage Funell for V60 Sevoflurane

Compatible with A3, A4, A5, A7, A8



V60 Isoflurane Vaporizer

115-025535-00

V60 Isoflurane Vaporizer with Key Filler

Compatible with A3, A4, A5, A7, A8



V60 Key Filler Filling Adapter for Isoflurane Bottle Adapter

040-002707-00

Isoflurane Key Filler Bottle Adapter

Compatible with A3, A4, A5, A7, A8

A9 Vaporizers



Sevoflurane Vaporizer Safety Filling Adapter

115-066756-00

Sevoflurane electronic vaporizer material package

Compatible with A9



Isoflurane Vaporizer with Safety Filling Adapter

115-066758-00

Isoflurane electronic vaporizer material package

Compatible with A9



Desflurane Vaporizer (Saf-T-Fil)

115-066759-00

Desflurane electronic vaporizer material package

Compatible with A9

Sevoflurane Safety Filling Adapter

115-064146-00

Sevoflurane safety filling adapter

Compatible with A9

Isoflurane Safety Filling Adapter 115-064147-00

Isoflurane safety filling adapter
 Compatible with A9

Water Traps



Dryline™ Water Trap – Adult/Pediatric 125-000005-00

Dryline water trap, Adult/Pediatric, box of 10
 Compatible with 3-slot AGM



Dryline™ Water Trap – Neonate 125-000006-00

Dryline water trap, Neonatal, box of 10
 Compatible with 3-slot AGM



Dryline™ II Water Trap – Adult/Pediatric 115-058733-00

Dryline water trap, Adult/Pediatric, box of 10
 Compatible with 2-slot AGM



Dryline™ II Water Trap – Neonate 115-058734-00

Dryline water trap, Neonatal, box of 10
 Compatible with 2-slot AGM

When the patient monitor is not connected to an electrical power source, you can rely on batteries for all Mindray DS USA monitors. Lithium Ion batteries offer improved performance in terms of battery runtime and recharge time.



Lithium Ion Battery 115-018012-00

Lithium Ion Battery for the Mindray monitors, 11.1V

Compatible with DPM 6, DPM 7 (requires 2 batteries), Passport 8, Passport 12, Passport 12m, Passport 17m, A3, A4, A5, A7



Lithium Ion Battery 115-082460-00

Lithium Ion Battery for Accutorr Vital Signs

Compatible with Accutorr 3, Accutorr 7



Lithium Ion Battery 115-034132-00

Lithium Ion Battery

Compatible with N19, N22, VS9



Lithium Ion Battery 115-065140-00

Lithium Ion Battery for ePM Series

Compatible with ePM10M, ePM12M, N12, N15, N17



T1 Lithium Ion Battery 115-018016-00

Lithium Ion Battery, 7.4V

Compatible with T1



T1 Lithium Ion Batteries 121-001220-00

Two Lithium Ion Batteries

Compatible with T1



Telepack Batteries

0146-00-0077-01

Batteries (Alkaline, size AA)

Compatible with Panorama Telepack, TD60, TM70, TM80



Universal Lithium Ion Battery

115-018011-00

Universal Lithium Ion Battery, 11.1V

Compatible with Accutorr Plus, Accutorr V, DPM 3, DPM 4, DPM 5, Trio, Passport 2, Passport V, Spectrum, Spectrum OR



V-Series Battery

115-018013-00

Lithium Ion Battery for V12 and V21 patient monitors

Compatible with V12, V21



BeneVision Telemetry Rechargeable Battery Pack

115-030107-00

BeneVision TD60/TM70/TD80 Rechargeable Lithium-Ion Battery Pack

Compatible with TD60, TM70, TM80

BeneVision Central Charger

115-030108-00

BeneVision Central Charger charges up to 10 Lithium-Ion Battery Packs simultaneously

Compatible with TD60, TM80, TM70, and BP10 batteries

GCX Mount for BeneVision Central Charger

115-030109-00

GCX Mount for BeneVision Central Charger

Compatible with BeneVision Central Charger

BP10 Li-ion Battery

115-035534-00

BP10 Li-ion battery package

Compatible with BP10

2 AA Battery Holder

115-030105-00

Battery Holder for 2AA Batteries (batteries not included), 3/box

Compatible with TD60



3 AA Battery Holder

115-030106-00

Battery Holder for 3 AA Batteries (batteries not included), 3/box

Compatible with TD60, TM70, TM80





Type A Serial Port Cable

009-001767-00

Type A serial port adapter cable / male to female

Compatible with Passport 12m, Passport, 17m, N12, N15, N17, N19, N22



Type B Serial Port Cable

009-001768-00

Type B serial port adapter cable / male to male

Compatible with Passport 12m, Passport 17m, N12, N15, N17, N19, N22



Type C Serial Port Cable

009-001769-00

Type C serial port adapter cable / male to male

Compatible with Passport 12m, Passport 17m, N12, N15, N17, N19, N22



Type D Serial Port Cable

009-002943-00

Type D serial port adapter cable / 9-pin to 15-pin

Compatible with Passport 12m, Passport 17m, N12, N15, N17, N19, N22



Type E Serial Port Cable

009-004613-00

Type E serial port adapter cable / 9-pin to RJ45 connector

Compatible with Passport 12m, Passport 17m, N12, N15, N17, N19, N22



Type F Serial Port Cable

009-008485-00

Type F serial port adapter cable

Compatible with N12, N15, N17, N19, N22

Type G Serial Port Cable

009-008624-00

Type G serial port adapter cable

Compatible with N12, N15, N17, N19, N22

Benelink ID Adapter

115-007277-00

Benelink ID Adapter

Compatible with N12, N15, N17, N19, N22

RJ45 Connecting Cable

009-001770-00

Benelink ID Adapter

Compatible with N12, N15, N17, N19, N22

Cardiac Output Cables



Cardiac Output Y Cable 0012-00-1447-01

Cable, Cardiac Output Y, two Temperature connections

Compatible with Spectrum, Spectrum OR, V12, V21



Cardiac Output Y Cable, 12 Pin 0010-30-42743

Cable, Cardiac Output Y, two Temperature connections

Compatible with DPM 6, DPM 7, Passport 8, Passport 12, Passport 12m, Passport 17m, N12, N15, N17, N19, N22



Edwards Lifesciences Bath Probe Adapter 0012-00-1519

Cable, Cardiac Output Edwards Lifesciences Bath probe adapter

Compatible with Spectrum, Spectrum OR, V12, V21, Passport 8, Passport 12, Passport 12m, Passport 17m, DPM 6, DPM 7, N12, N15, N17, N19, N22



Edwards Lifesciences In-line Injectate Adapter 0012-00-1520

Cable, Cardiac Output Edwards Lifesciences in-line injectate adapter

Compatible with Spectrum, Spectrum OR, V12, V21, DPM 6, DPM 7, Passport 8, Passport 12, Passport 12m, Passport 17m, N12, N15, N17, N19, N22



In-line Injection Temperature Sensor, BD, Reusable 6000-10-02079

In-line injection temperature sensor, BD, reusable

Compatible with N12, N15, N17, N19, N22



In-line Injection Temperature Sensor Housing, BD, Disposable 6000-10-02080

In-line injection temperature sensor housing, BD, disposable (pkg of 25)

Compatible with N12, N15, N17, N19, N22

Adapters**Dryline™ Airway Adapter – Elbow**

115-043021-00

Dryline airway adapter, elbow, box of 10

Compatible with DPM 4, DPM 5, DPM 6, DPM 7, Passport V, Passport 12, Passport 12m, Passport 17m, T1, N1, N12, N15, N17, N19, N22, ePM 12M

**Dryline™ Airway Adapter – Straight**

115-043020-00

Dryline airway adapter, straight, box of 10

Compatible with DPM 4, DPM 5, DPM 6, DPM 7, Passport V, Passport 12, Passport 12m, Passport 17m, T1, N1, N12, N15, N17, N19, N22, ePM 12M

**Mindray Low Flow Sidestream CO₂ Adapter**

045-003134-00

Low flow sidestream adapter connects the Accutorr 7 and N1 to Covidien Microstream filterlines

Compatible with Accutorr 7, N1

Cannulas**Nasal Cannula – Adult**

115-043001-00

CO₂ Nasal sample cannula, Adult with 7' line, box of 25

Compatible with DPM 4, DPM 5, DPM 6, DPM 7, Passport V, Passport 8, Passport 12m, Passport 17m, T1, ePM 10M, ePM 12M, N1, N12, N15, N17, N19, N22

**Nasal Cannula – Pediatric**

115-043002-00

CO₂ Nasal sample cannula, Pediatric with 7' line, box of 25

Compatible with DPM 4, DPM 5, DPM 6, DPM 7, Passport V, Passport 8, Passport 12, Passport 12m, Passport 17m, T1, ePM 12M, N1, N12, N15, N17, N19, N22

**Nasal Cannula – Infant**

115-043003-00

CO₂ Nasal sample cannula, Infant with 7' line, box of 25

Compatible with DPM 4, DPM 5, DPM 6, DPM 7, Passport V, Passport 8, Passport 12, Passport 12m, Passport 17m, T1, ePM 12M, N1, N12, N15, N17, N19, N22



Nasal Cannula – CO₂/O₂

0683-00-0452-25

Nasal Cannula, CO₂/O₂, 7' (2.1m), box of 25

Compatible with Passport V, Gas Module 3

Sampling Lines



Sampling Line – Adult

115-043017-00

Sampling line, Adult, 8.2' (2.5 m), box of 25

Compatible with DPM 4, DPM 5, DPM 6, DPM 7, Passport V, Passport 12, Passport 12m, Passport 17m, T1, ePM 10m, ePM 12m, N1, N12, N15, N17, N19, N22



Sampling Line – Neonate

115-043018-00

Sampling line, Neonatal, 8.2' (2.5 m), box of 25

Compatible with DPM 4, DPM 5, DPM 6, DPM 7, Passport V, Passport 12, Passport 12m, Passport 17m, T1, ePM 10m, ePM 12m, N1, N12, N15, N17, N19, N22

Water Traps



Dryline™ Water Trap – Adult/Pediatric

125-000005-00

Dryline water trap, Adult/Pediatric, box of 10

Compatible with DPM 4, DPM 5, DPM 6, DPM 7, Passport V, Passport 8, Passport 12, Passport 12m, Passport 17m, T1, N12, N15, N17, N19, N22



Dryline™ II Water Trap, Single Slot (1x) – Adult/Pediatric

115-058733-00

Dryline water trap used with the 1x Sidestream CO₂ module, Adult/Pediatric, box of 10

Compatible with Passport 8, Passport 12, Passport 12m, Passport 17m, T1, ePM 10m, ePM 12m, N1, N12, N15, N17, N19, N2



Dryline™ Water Trap – Neonate

125-000006-00

Dryline water trap, Neonatal, box of 10

Compatible with DPM 4, DPM 5, DPM 6, DPM 7, Passport V, Passport 8, Passport 12, Passport 12m, Passport 17m, T1



Dryline™ II Water Trap, Single Slot (1x) – Neonate

115-058734-00

Dryline water trap used with the 1x Sidestream CO₂ module, Neonatal, box of 10

Compatible with Passport 8, Passport 12, Passport 12m, Passport 17m, T1, ePM 10m, ePM 12m, N1, N12, N15, N17, N19, N22

Data Storage Cards



CF storage card (4GB)

023-000846-00

CF storage card (4GB)

Compatible with DPM 6, DPM 7, Passport 12m, Passport 17m



USB

023-000996-00

USB for settings transfer between monitors

Compatible with T1, ePM 10M, ePM 12M, N1, N12, N15, N17, N19, N22



USB

023-001673-00

USB for settings transfer between monitors

Compatible with A-Series, Accutorr 7, Passport 8, Passport 12, Passport 12m, Passport 17m



USB Drive

023-000218-00

USB Drive (32 GB)

Compatible with ePM 10M, ePM 12M, N1, N12, N15, N17, N19, N22

Cables



3/5 Lead ECG Cable, N/T, 10' 009-005266-00

3/5 Lead ECG Cable, N/T, 10' Used with lead wires: 009-004771-00, 009-004772-00, 009-004765-00, 009-004766-00, 009-004782-00, 009-004783-00, 009-004786-00, 009-004787-00, 115-032955-00, 115-032954-00

Compatible with Passport 8, Passport 12, Passport 12m, Passport 17m, T1, ePM 10m, ePM 12m, N1, N12, N15, N17, N19, N22



3/5 Lead ECG Cable, N/T, 20' 009-005267-00

3/5 Lead ECG Cable, N/T, 20' Used with lead wires: 009-004771-00, 009-004772-00, 009-004765-00, 009-004766-00, 009-004782-00, 009-004783-00, 009-004786-00, 009-004787-00, 115-032955-00, 115-032954-00

Compatible with Passport 8, Passport 12, Passport 12m, Passport 17m, T1, ePM 10m, ePM 12m, N1, N12, N15, N17, N19, N22



3/5 Lead ECG Cable, 6 pin 0010-30-42782

ECG Cable: 3/5 Lead, Adult/Pediatric, 6 Pin, Defib-Proof, AHA/IEC, 10'
Used with lead wires: 0010-30-42726, 0010-30-42731, 0010-30-42734, 0010-30-42727, 0010-30-42729

Compatible with DPM 4, DPM 5



3/5 Lead ECG Cable, 12 pin 0010-30-42719

ECG Cable: 3/5 Lead, Adult/Pediatric, 12 Pin, Defib-Proof, AHA/IEC, 10'
Used with lead wires: 0010-30-42726, 0010-30-42731, 0010-30-42734, 0010-30-42727, 0010-30-42729

Compatible with DPM 6, DPM 7, Passport 8, Passport 12, Passport 12m, Passport 17m, T1



3/5 Lead ECG Cable, 10' 0012-00-1745-01

ECG Cable: 3/5 Lead, 10' (3.1 m), reusable
Used with lead wires: 0012-00-1514-03, 0012-00-1514-02, 0012-00-1514-05, 0012-00-1514-06, 0012-00-1503-05, 0012-00-1503-06, 040-000748-01, 040-000746-01

Compatible with Passport V, V12, V21



3/5 Lead ECG Cable, 10' 0012-00-1255-01

ECG Cable, 3/5 Lead, 10' (3.1 m), reusable
Used with lead wires: 0012-00-1262-02, 0012-00-1262-03, 0012-00-1262-08, 0012-00-1262-09, 0012-00-1261-07, 0012-00-1261-08, 0012-00-1261-09

Compatible with Trio, Passport 2, Spectrum, Spectrum OR



6 Lead ECG Cable, 10' 0012-00-1746-01

ECG Cable 6 Lead, 10'

Compatible with V12, V21

**3/5 Lead ECG Mobility Cable, 12 pin**

040-001416-00

ECG Cable, Adult/Pediatric, connects to the mobility lead wires (0012-00-1514-03, 0012-00-1514-02, 0012-00-1514-05, 0012-00-1514-06, 0012-00-1503-05, 0012-00-1503-06) and to single patient use lead wires (040-000746-01, 040-000748-01)

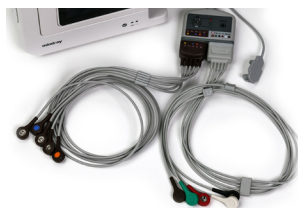
Compatible with DPM 6, DPM 7, Passport 8, Passport 12, Passport 12m, Passport 17m, T1

**12 Lead ECG Cable**

0010-30-42721

ECG Cable, 12 Lead, Adult, defib proof, AHA

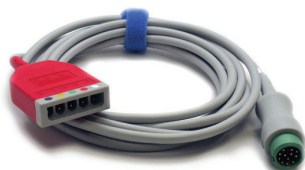
Compatible with DPM 6, DPM 7, Passport 12m, Passport 17m, T1

**12 Lead ECG Cable - N/T**

040-003528-00

ECG Cable, 12 Lead, 12 lead ECG used with N/T leadwires

Compatible with N1, N12, N15, N17, N19, N22, Passport 12m, Passport 17m

ESIS Cables**3/5 Lead ESIS ECG Cable, 12 pin**

0010-30-42723

ECG Cable: 3/5 Lead, Adult/Pediatric, 12 Pin, ESU-Proof, AHA/IEC, 10'
Used with lead wires: 0010-30-42726, 0010-30-42731, 0010-30-42734, 0010-30-42727, 0010-30-42729

Compatible with DPM 6, DPM 7, Passport 8, Passport 12, Passport 12m, Passport 17m, T1

**3/5 Lead ECG Mobility Cable, ESIS, 12 pin**

009-003652-00

ECG cable connects to the mobility lead wires
Used with lead wires: 0012-00-1514-03, 0012-00-1514-02, 0012-00-1514-05, 0012-00-1514-06, 0012-00-1503-05, 0012-00-1503-06, 040-000748-01, 040-000746-01

Compatible with DPM 6, DPM 7, Passport 8, Passport 12, Passport 12m, Passport 17m, T1

**3/5 Lead ESIS ECG Cable, 10'**

0012-00-1745-03

ECG Cable, 3/5 Lead, ESIS, 10' (3.1 m), Reusable
Used with lead wires: 0012-00-1514-03, 0012-00-1514-02, 0012-00-1514-05, 0012-00-1514-06, 0012-00-1503-05, 0012-00-1503-06, 040-000748-01, 040-000746-01

Compatible with Passport V, V12, V21

**3/5 Lead ESIS ECG Cable - 10'**

0012-00-1255-05

ECG Cable, 3/5 Lead, Straight, ESIS 10' (3.1 m)
Used with lead wires: 0012-00-1262-02, 0012-00-1262-03, 0012-00-1262-08, 0012-00-1262-09, 0012-00-1261-07, 0012-00-1261-08, 0012-00-1261-09

Compatible with Passport 2, Spectrum, Spectrum OR



Mobility ESIS ECG Cable, 10'

0012-00-1502-03

Mobility ECG Cable, ESIS, 10', AAMI
 Used with lead wires: 0012-00-1514-03, 0012-00-1514-02, 0012-00-1514-05,
 0012-00-1514-06, 0012-00-1503-05, 0012-00-1503-06, 040-000748-01, 040-000746-01

Compatible with Passport 2, Spectrum, Spectrum OR



3/ 5 Lead ESIS ECG Cable, N/T, 10'

009-005268-00

3/5 Lead ECG Cable, N/T, 10' used with lead wires: 009-004771-00, 009-004772-00,
 009-004765-00, 009-004766-00, 009-004782-00, 009-004783-00, 009-004786-00,
 009-004787-00, 115-032955-00, 115-032954-00

Compatible with , Passport 8, Passport 12, Passport 12m, Passport 17m, T1, ePM 10m, ePM 12m, N1, N12, N15, N17, N19, N22



3/5 Lead ESIS ECG Cable, N/T, 20'

009-005269-00

3/5 Lead ECG Cable, N/T, 20' used with lead wires: 009-004771-00, 009-004772-00,
 009-004765-00, 009-004766-00, 009-004782-00, 009-004783-00, 009-004786-00,
 009-004787-00, 115-032955-00, 115-032954-00

Compatible with , Passport 8, Passport 12, Passport 12m, Passport 17m, T1, ePM 10m, ePM 12m, N1, N12, N15, N17, N19, N22

Neonate Cables



Neonate ECG Cable

040-000072-00

ECG Cable, Neonatal, 3 Lead, 20' (6.1 m), Reusable
 Used with 0681-00-0098-01, 0681-00-0098-02

Compatible with Passport V, V12, V21



Neonate ECG Cable, 6 pin

0010-30-12377

ECG Cable: 3 Lead, Neonatal, 6 Pin, Defib-Proof, PTU, reusable, 10'
 Used with lead wires: 0010-30-42896

Compatible with DPM 4, DPM 5



Neonate ECG Cable - 12 pin

0010-30-42720

ECG Cable: 3 Lead, Pediatric/Neonatal, 12 Pin, Defib-Proof, reusable, 10'
 Used with lead wires: 0010-30-42896

Compatible with DPM 6, DPM 7, Passport 8, Passport 12, Passport 12m, Passport 17m, T1



Neonate ECG Cable - 12 pin

040-000754-00

3 Lead ECG trunk cable for use with prewired neonate electrodes, 12 Pin, Defib-Proof, AHA
 Used with lead wires: 0681-00-0098-01, 0681-00-0098-02

Compatible with DPM 6, DPM 7, Passport 8, Passport 12, Passport 12m, Passport 17m, T1, N12, N15, N17, N19, N22

Cable Adapter



ECG Cable Adapter - 12 pin to 6 pin

0010-30-43054

ECG Cable Adapter, 12 pin to 6 pin. Allows the use of DPM 4 and DPM 5 ECG cables with the DPM 6 and DPM 7 monitors

Compatible with DPM 6, DPM 7

Electrodes



ECG Adult Electrodes

0010-10-12304

ECG Electrodes: Adult, 10 pcs/pack, Kendall

Compatible with DPM 4, DPM 5, DPM 6, DPM 7, DPM CS, V12, V21, Passport 8, Passport 12, Passport 12m, Passport 17m, T1, TM80, TD60, ePM 10M, ePM 12M, N1, N12, N15, N17, N19, N22



ECG Radio Opaque Neonate Electrodes

0681-00-0098-01

Radio Opaque, Neonatal Pre-wired, 3 Lead ECG Electrodes, AAMI, 18" (45.7cm) (Box of 100 packs; each pack contains 3 electrodes)

Compatible with DPM 6, DPM 7, V12, V21, Passport 8, Passport 12, Passport 12m, Passport 17m, T1, ePM 10M, ePM 12M, N1, N12, N15, N17, N19, N22



ECG Translucent Neonate Electrodes

0681-00-0098-02

Radio Translucent, Neonatal Pre-wired, 3 Lead ECG Electrodes, AAMI, 18" (45.7 cm) Box of 100 Packs (each pack contains 3 electrodes)

Compatible with DPM 6, DPM 7, V12, V21, Passport 8, Passport 12, Passport 12m, Passport 17m, T1, ePM 10M, ePM 12M, N1, N12, N15, N17, N19, N22

Lead Wires – 3 Lead Pinch



3 Lead ECG Pinch Clip Lead Wires - Adult /Pediatric

0010-30-42726

3 Lead ECG wires, Clip, Adult/Pediatric, TPU, AHA, 24"

Compatible with DPM 4, DPM 5, DPM 6, DPM 7, Passport 8, Passport 12, Passport 12m, Passport 17m, T1, ePM 10M, ePM 12M, N1, N12, N15, N17, N19, N22



3 Lead ECG Pinch Clip Lead Wires - Adult /Pediatric

0010-30-42731

3 Lead ECG wires, Clip, Adult/Pediatric, AHA, 36"

Compatible with DPM 4, DPM 5, DPM 6, DPM 7, Passport 8, Passport 12, Passport 12m, Passport 17m, T1, ePM 10M, ePM 12M, N1, N12, N15, N17, N19, N22



3 Lead ECG Pinch Clip Lead Wires - Neonate 0010-30-42896

3 Lead ECG wires, Clip, Neonatal/Infant, 36"

Compatible with DPM 4, DPM 5, DPM 6, DPM 7, Passport 8, Passport 12, Passport 12m, Passport 17m, T1, ePM 10M, ePM 12M, N1, N12, N15, N17, N19, N22



3 Lead Mobility ECG Pinch Clip Lead Wires - 24" 0012-00-1514-05

ECG Mobility Lead Wires, 3 Lead, Pinch, 24" (61.0 cm) Reusable, AAMI

Compatible with DPM6, DPM7, Panorama Telepack, Passport 2, Passport V, Spectrum, Spectrum OR, V12, V21, Passport 8, Passport 12, Passport 12m, Passport 17m, T1, ePM 10M, ePM 12M, N1, N12, N15, N17, N19, N22



3 Lead Mobility ECG Pinch Clip Lead Wires - 36" 0012-00-1514-06

ECG Mobility Lead Wires, 3 Lead, Pinch, 36" (101.6 cm) Reusable, AAMI

Compatible with DPM6, DPM7, Panorama Telepack, Passport 2, Passport V, Spectrum, Spectrum OR, V12, V21, Passport 8, Passport 12, Passport 12m, Passport 17m, T1, ePM 10M, ePM 12M, N1, N12, N15, N17, N19, N22



3 Lead ECG Pinch Clip Lead Wires - 24" 0012-00-1262-08

Lead Wires, 3 Lead, Pinch Clip 24" (61.0 cm), AAMI

Compatible with Trio, Passport 2, Spectrum, Spectrum OR



3 Lead ECG Pinch Clip Lead Wires - 40" 0012-00-1262-09

Lead Wires, 3 Lead, Pinch Clip 40" (101.6 cm), AAMI

Compatible with Trio, Passport 2, Spectrum, Spectrum OR



3 Lead N/T ECG Pinch Clip Lead Wires - 24" 009-004771-00

ECG Mobility Lead Wires, 3 Lead, Pinch, AHA, 24"

Compatible with TD60, TM70, TM80, ePM 10m, ePM 12m, N1, N12, N15, N17, N19, N22



3 Lead N/T ECG Pinch Clip Lead Wires - 36" 009-004772-00

ECG Mobility Lead Wires, 3 Lead, Pinch, AHA, 36"

Compatible with TD60, TM70, TM80, ePM 10M, ePM 12m, N1, N12, N15, N17, N19, N22

Lead Wires – 3 Lead Snap**3 Lead ECG Snap Lead Wires - Adult/Pediatric**

0010-30-42734

3 Lead ECG Wires, Snap, Adult/Pediatric, 36"

Compatible with DPM 4, DPM 5, DPM 6, DPM 7, Passport 8, Passport 12, Passport 12m, Passport 17m, T1, ePM 10M, ePM 12M, N1, N12, N15, N17, N19, N22

**3 Lead Mobility ECG Snap Lead Wires - 24"**

0012-00-1503-05

ECG Mobility Lead Wires, 3 Lead, Snap, 24" (61.0 cm), Reusable, AAMI

Compatible with DPM 6, DPM 7, Panorama Telepack, Passport 2, Passport V, V12, V21, Passport 8, Passport 12, Passport 12m, Passport 17m, T1, ePM 10M, ePM 12M, N1, N12, N15, N17, N19, N22

**3 Lead Mobility ECG Snap Lead Wires - 36"**

0012-00-1503-06

ECG Mobility Lead Wires, 3 Lead, Snap, 36" (101.6 cm), Reusable, AAMI

Compatible with DPM 6, DPM 7, Panorama Telepack, Passport V, V12, V21, Passport 8, Passport 12, Passport 12m, Passport 17m, T1, ePM 10M, ePM 12M, N1, N12, N15, N17, N19, N22

**3 Lead ECG Snap Lead Wires - 18"**

0012-00-1261-07

Lead Wires, 3 Lead, Snap 18" (45.7 cm), AAMI

Compatible with Trio, Passport 2, Spectrum, Spectrum OR

**3 Lead ECG Snap Lead Wires - 24"**

0012-00-1261-08

Lead Wires, 3 Lead, Snap 24" (61.0 cm), AAMI

Compatible with Trio, Passport 2, Spectrum, Spectrum OR

**3 Lead ECG Snap Lead Wires - 40"**

0012-00-1261-09

Lead Wires, 3 Lead, Snap 40" (101.6 cm), AAMI

Compatible with Trio, Passport 2, Spectrum, Spectrum OR

**3 Lead ECG Snap Lead Wires**

115-004867-00

Lead Wires, 3 Lead, Snap

Compatible with Tel-200



3 Lead N/T ECG Snap Lead Wires - 24"

009-004765-00

ECG Mobility Lead Wires, 3 Lead, Snap, AHA, 24"

Compatible with TD60, TM70, TM80, Passport 8, Passport 12, Passport 12m, Passport 17m, T1, ePM 10m, ePM 12m, N1, N12, N15, N17, N19, N22



3 Lead N/T ECG Snap Lead Wires - 36"

009-004766-00

ECG Mobility Lead Wires, 3 Lead, Snap, AHA, 36"

Compatible with TD60, TM70, TM80, Passport 8, Passport 12, Passport 12m, Passport 17m, T1, ePM 10m, ePM 12m, N1, N12, N15, N17, N19, N22

Lead Wires – 5 Lead Pinch



5 Lead ECG Pinch Lead Wires - Adult/Pediatric

0010-30-42727

5 Lead ECG Wires, Clip, Adult/Pediatric, 36"

Compatible with DPM 4, DPM 5, DPM 6, DPM 7, Passport 8, Passport 12, Passport 12m, Passport 17m, T1, ePM 10M, ePM 12M, N1, N12, N15, N17, N19, N22



5 Lead ECG Pinch Lead Wires - Adult/Pediatric

0010-30-42729

5 Lead ECG Wires, Clip, Adult/Pediatric, 36"

Compatible with DPM 4, DPM 5, DPM 6, DPM 7, Passport 8, Passport 12, Passport 12m, Passport 17m, T1, ePM 10M, ePM 12M, N1, N12, N15, N17, N19, N22



5 Lead Mobility ECG Pinch Lead Wires - 24"

0012-00-1514-02

ECG Mobility Lead Wires, 5 Lead, Pinch, 24" (61.0 cm) Reusable, AAMI

Compatible with DPM 6, DPM 7, Panorama, Passport V, V12, V21, Passport 8, Passport 12, Passport 12m, Passport 17m, T1, ePM 10M, ePM 12M, N1, N12, N15, N17, N19, N22



5 Lead Mobility ECG Pinch Lead Wires - 36"

0012-00-1514-03

ECG Mobility Lead Wires, 5 Lead, Pinch, 36" (101.6 cm) Reusable, AAMI

Compatible with DPM 6, DPM 7, Panorama, Passport 2, Passport V, Spectrum, Spectrum OR, V12, V21, Passport 8, Passport 12, Passport 12m, Passport 17m, T1, ePM 10M, ePM 12M, N1, N12, N15, N17, N19, N22



5 Lead ECG Pinch Lead Wires - 24"

0012-00-1262-02

Lead Wires, 5 Lead, Pinch Clip 24" (61.0 cm), AAMI

Compatible with Trio, Passport 2, Spectrum, Spectrum OR



5 Lead ECG Pinch Lead Wires - 40"

0012-00-1262-03

Lead Wires, 5 Lead, Pinch Clip 40" (101.6 cm), AAMI

Compatible with Trio, Passport 2, Spectrum, Spectrum OR



5 Lead ECG Pinch Lead Wires

115-004873-00

Lead Wires, 5 Lead, Pinch

Compatible with Tel-200



5 Lead N/T ECG Pinch Lead Wires - 24"

009-004786-00

ECG Mobility Lead Wires, 5 Lead, Pinch, AHA, 24"

Compatible with TD60, TM70, TM80, Passport 8, Passport 12, Passport 12m, Passport 17m, T1, ePM 10m, ePM 12m, N1, N12, N15, N17, N19, N22



5 Lead N/T ECG Pinch Lead Wires - 36"

009-004787-00

ECG Mobility Lead Wires, 5 Lead, Pinch, AHA, 36"

Compatible with TD60, TM70, TM80, Passport 8, Passport 12, Passport 12m, Passport 17m, T1, ePM 10m, ePM 12m, N1, N12, N15, N17, N19, N22

Lead Wires – 5 Lead Snap



5 Lead ECG Snap Lead Wires - Adult/Pediatric

0010-30-42735

5-Lead ECG Wires, Snap, Adult

Compatible with DPM 4, DPM 5, DPM 6, DPM 7, Passport 8, Passport 12, Passport 12m, Passport 17m, T1, ePM 10M, ePM 12M, N1, N12, N15, N17, N19, N22



5 Lead Mobility ECG Snap Lead Wires - 24"

0012-00-1503-02

ECG Mobility Lead Wires, 5 Lead, Snap 24" (61.0 cm) AAMI

Compatible with DPM 6, DPM 7, Panorama, Passport 2, Passport V, V12, V21, Passport 8, Passport 12, Passport 12m, Passport 17m, T1, ePM 10M, ePM 12M, N1, N12, N15, N17, N19, N22



5 Lead Mobility ECG Snap Lead Wires - 36"

0012-00-1503-03

ECG Mobility Lead Wires, 5 lead, Snap, 36" (101.6 cm), Reusable, AAMI

Compatible with DPM 6, DPM 7, Panorama, Passport 2, Passport V, V12, V21, Passport 8, Passport 12, Passport 12m, Passport 17m, T1, ePM 10M, ePM 12M, N1, N12, N15, N17, N19, N22



5 Lead ECG Snap Lead Wires - 24" 0012-00-1261-02

Lead Wires, 5 Lead, Snap 24" (61.0 cm), AAMI
 Compatible with Trio, Passport 2, Spectrum, Spectrum OR



5 Lead ECG Snap Lead Wires - 40" 0012-00-1261-03

Lead Wires, 5 Lead, Snap 40" (101.6 cm), AAMI
 Compatible with Trio, Passport 2, Spectrum, Spectrum OR



5 Lead ECG Snap Lead Wires - Extended Leg 0012-00-1261-13

Lead Wires, 5 Lead, Snap, Extended Leg, 3/40", 2/60", AAMI
 Compatible with Trio, Passport 2, Spectrum, Spectrum OR



5 Lead ECG Snap Lead Wires 115-004869-00

Lead Wires, 5 Lead, Snap
 Compatible with Tel-200



5 Lead N/T ECG Snap Lead Wires - 24" 009-004782-00

ECG Mobility Lead Wires, 5 Lead, Snap, AHA, 24"
 Compatible with TD60, TM70, TM80, Passport 8, Passport 12, Passport 12m, Passport 17m, T1, ePM 10m, ePM 12m, N1, N12, N15, N17, N19, N22



5 Lead N/T ECG Snap Lead Wires - 36" 009-004783-00

ECG Mobility Lead Wires, 5 Lead, Snap, AHA, 36"
 Compatible with TD60, TM70, TM80, Passport 8, Passport 12, Passport 12m, Passport 17m, T1, ePM 10m, ePM 12m, N1, N12, N15, N17, N19, N22

Lead Wires – 6 Lead**6-Lead N/T, Pinch Lead Wires - 24"**

009-004798-00

ECG lead wires, 6 lead, pinch/clip, AHA, 24"

Compatible with N12, N15, N17, N19, N22

**6-Lead N/T, Pinch Lead Wires - 36"**

009-004799-00

ECG lead wires, 6 lead, pinch/clip, AHA, 36"

Compatible with N12, N15, N17, N19, N22

**6-Lead N/T, Snap Lead Wires - 24"**

009-004794-00

ECG lead wires, 6 lead, snap, AHA, 24"

Compatible with N12, N15, N17, N19, N22

**6-Lead N/T, Snap Lead Wires - 36"**

009-004795-00

ECG lead wires, 6 lead, snap, AHA, 36"

Compatible with N12, N15, N17, N19, N22

Lead Wires – 12 Lead**12-Lead ECG Lead Wires**

0012-00-1411-02

Lead Wire Set for 12 Lead ECG Monitoring, AAMI

Compatible with Passport 2, Spectrum

**1- Lead ECG Lead Wires, Chest**

0010-30-42908

Lead Wires, Chest, for 12 Lead ECG Monitoring

Compatible with DPM6, DPM7, Passport 12m, Passport 17m, T1, N1, N12, N15, N17, N19, N22



12-Lead ECG Lead Wires, Chest, Clip 0010-30-42904

Lead Wires, pinch/clip, Chest, for 12 Lead ECG Monitoring
 Compatible with DPM6, DPM7, Passport 12m, Passport 17m, T1, N1, N12, N15, N17, N19, N22



12-Lead ECG Lead Wires, Limb 0010-30-42906

Lead Wires, Limb, for 12 Lead ECG Monitoring
 Compatible with DPM6, DPM7, Passport 12m, Passport 17m, T1



12-Lead ECG Lead Wires, Limb, Clip 0010-30-42902

Lead Wires, pinch/clip, Limb, for 12 Lead ECG Monitoring
 Compatible with DPM6, DPM7, Passport 12m, Passport 17m, T1

Single Patient Use Lead Wires



3 Lead Disposable ECG Snap Lead Wires - 24" 040-000748-01

3 Lead Disposable ECG Snap Lead Wires, Single Patient Use, AAMI, 24", 20/box
 Compatible with Panorama Telepack, V12, V21, DPM 6, DPM 7, Passport V, Passport 2, Spectrum, Passport 8, Passport 12, Passport 12m, Passport 17m, T1



5 Lead Disposable ECG Snap Lead Wires - 24" 040-000746-01

5 Lead Disposable ECG Snap Lead Wires, Single Patient Use, AAMI, 24", 20/box
 Compatible with Panorama Telepack, V12, V21, DPM 6, DPM 7, Passport V, Passport 2, Spectrum, Passport 8, Passport 12, Passport 12m, Passport 17m, T1



3 Lead Disposable N/T ECG Snap Lead Wires - 24" 115-032954-00

3 Lead Disposable ECG Snap Lead Wires, Single Patient Use, AHA, 24", 20/box
 Compatible with TD60, TM70, TM80, Passport 8, Passport 12, Passport 12m, Passport 17m, T1, ePM 10m, ePM 12m, N1, N12, N15, N17, N19, N22



5 Lead Disposable N/T ECG Snap Lead Wires - 24" 115-032955-00

5 Lead Disposable ECG Snap Lead Wires, Single Patient Use, AHA, 24", 20/box
 Compatible with TD60, TM70, TM80, Passport 8, Passport 12, Passport 12m, Passport 17m, T1, ePM 10M, ePM 12M, N1, N12, N15, N17, N19, N22

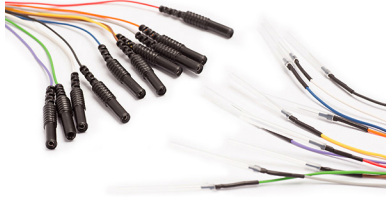


EEG Cable

040-001594-00

Cable for EEG, adult/pediatric, reusable (included with EEG module BOM)

Compatible with N12, N15, N17, N19, N22

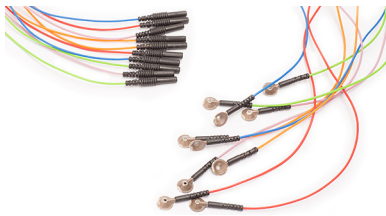


Subdermal – EEG

040-001596-00

Subdermal for EEG, adult/pediatric, disposable

Compatible with N12, N15, N17, N19, N22

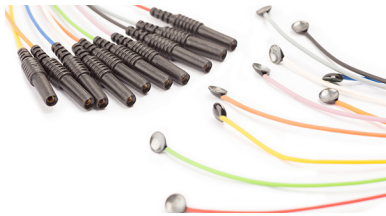


Cup Electrodes – EEG, Adult

040-001598-00

Cup electrodes for EEG, adult/pediatric, reusable

Compatible with N12, N15, N17, N19, N22

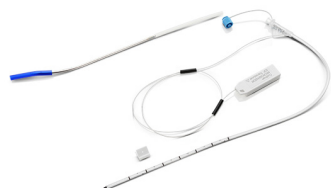


Cup Electrodes – EEG, Pediatric

040-001602-00

Cup electrodes for EEG (D=6 mm), pediatric, reusable

Compatible with N12, N15, N17, N19, N22



Codman ICP Sensor Kit

040-002336-00

Codman ICP sensor, kit, pkg of 1

Compatible with N1, N12, N15, N17, N19, N22



ICP Cable – 12 Pin

009-005460-00

12 Pin ICP Cable (required to connect to Codman ICP sensor)

Compatible with N1, N12, N15, N17, N19, N22



ICP Cable

115-025257-00

Camino ICP Cable (use with IBP module)

Compatible with N12, N15, N17, N19, N22

IBP Cables



Becton Dickinson IBP Cable - 6 Pin

001C-30-70758

6 Pin IBP Cable (for Becton Dickinson)

Compatible with DPM 4, DPM 5



Becton Dickinson IBP Cable - 12 Pin

001C-30-70757

12 Pin IBP Cable (for Becton Dickinson)

Compatible with DPM 6, DPM 7, Passport 8, Passport 12, Passport 12m, Passport 17m, T1, ePM 10M, ePM 12M, N1, N12, N15, N17, N19, N22



Double-end IBP Extension Cable

040-001029-00

IBP extended cable with dual-receptacle used to support the double-channel IBP function

Compatible with Passport 8, Passport 12, Passport 12m, Passport 17m, T1, N1



Edwards IBP Cable - 6 Pin

0010-21-43094

6 Pin IBP Cable for Edwards

Compatible with DPM 4, DPM 5



Edwards IBP Cable - 12 Pin

0010-21-12179

12 Pin IBP Cable for Edwards

Compatible with DPM 6, DPM 7, Passport 8, Passport 12, Passport 12m, Passport 17m, T1, ePM 10M, ePM 12M, N1, N12, N15, N17, N19, N22

Edwards (TruWave) Cable - 12 Pin

125-000123-00

12 Pin IBP Cable for Edwards (TruWave)

Compatible with ePM10M, ePM12M, N12, N15, N17, N19, N22



Hospira IBP Cable - 6 Pin

001C-30-70760

6 Pin IBP Cable (for Hospira)

Compatible with DPM 4, DPM 5



Hospira IBP Cable - 12 Pin

001C-30-70759

12 Pin IBP Cable (for Hospira)

Compatible with DPM 6, DPM 7, Passport 8, Passport 12, Passport 12m, Passport 17m, T1, ePM 10M, ePM 12M, N1, N12, N15, N17, N19, N22



Hospira IBP Cable

040-000052-00

IBP Cable, Hospira Transpac IV, 12'

Compatible with Passport V, V12, V21



IBP Cable Adapter

0010-20-42795

IBP cable adapter (12 pin to 6 pin)

Compatible with DPM 6, DPM 7, Passport 8, Passport 12, Passport 12m, Passport 17m, T1



IBP Interface Cable

0012-00-1245

Cable, Interface, Transducer

Compatible with Trio, Passport 2, Spectrum, Spectrum OR



Memscap IBP Cable - 6 Pin

0010-21-43081

6 Pin IBP Cable for Memscap (SP844 transducer)

Compatible with DPM 4, DPM 5



Memscap IBP Cable - 12 Pin

0010-21-43082

12 Pin IBP Cable for Memscap (SP844 transducer)

Compatible with DPM 6, DPM 7, Passport 8, Passport 12, Passport 12m, Passport 17m, T1



Wireless Keyboard and Mouse

023-000524-00

Wireless keyboard and mouse

Compatible with N1, N12, N15, N17, N19, N22, Passport 12m, Passport 17m, ePM 10M, ePM 12M



Keyboard and Mouse

023-000525-00

Keyboard and mouse

Compatible with N1, N12, N15, N17, N19, N22, Passport 12m, Passport 17m, ePM 10M, ePM 12M

Keyboard Wall Mount Bracket

045-000934-00

Keyboard wall mount bracket

Compatible with N1, N12, N15, N17, N19, N22, Passport 12m, Passport 17m

Bar Code Scanners



Jadak 2D Barcode Scanner

115-039575-00

2D Bar Code Scanner (scans 1D/2D barcodes)

Compatible with Accutorr 7, ePM 10m, ePM 12m, N1, N12, N15, N17, N19, N22, VS9



Jadak 2D Barcode and RFID Scanner

023-002111-00

2D Bar Code Scanner - Dual Frequency Barcode Scanner

Compatible with Accutorr 7, VS9

Telemetry Bags



Disposable DPM™ CS Telemetry Pouch

0152-10-39878

Disposable Transmitter Bag protects the DPM CS Telepack

Compatible with DPM CS Ambulatory Telepack



Disposable Panorama Telepack Pouch

0202-00-0179-02

Disposable Panorama Telepack Pouch , pkg 25

Compatible with Panorama Telepack



Disposable TD60/TM80 Pouch

115-032957-00

Disposable Pouch protects telemetry device, pkg 25

Compatible with TD60, TM70, TM80

AC/DC Adapter



AC/DC Adapter

022-000059-00

AC/DC Adapter

Compatible with T1

Adapter Cables



Analog Out Interface Cable

0012-00-1801-01

Terminated pigtail cable – IABP sync cable

Compatible with V12, V21, Passport 12m, Passport 17m, DPM6, DPM7



Analog Output Cable

009-003117-00

Analog output cable

Compatible with Passport 8, Passport 12, ePM 10m, ePM 12m



Continuous Cardiac Output / SVO₂ Cable

009-000259-00

CCO/SvO₂ link interface replacement cable

Compatible with Passport 12m, Passport 17m, N12, N15, N17, N19, N22



Multifunction Analog Output Cable

009-002944-00

Multi-function analog output cable, IABP analog output cable

Compatible with T1



Synchronization Cable

009-003118-00

Synchronization Cable

Compatible with Passport 8, Passport 12, ePM 10m, ePM 12m



Unterminated Pigtail Cable for Analog Out

0012-00-1801-02

Unterminated pigtail cable for analog out (outputs 5 signals: IBP1, IBP2, ECG, defib sync & ground)

Compatible with V12, V21

Communication Cable



PC Communication Cable

0850-20-30725

1 PC communication cable

Compatible with DPM 1, DPM 2

Defib Cables



Defib Sync Cable

009-000027-00

Defibrillator synchronization cable

Compatible with DPM 6, DPM 7, Passport 12m, Passport 17m



Defib Sync Cable

009-003249-00

Defibrillator synchronization cable, 12 pin

Compatible with T1

Docking Station Cables



Passport M Series to N1/T1 Docking Station Cable, 1m

009-003591-00

Passport M Series to N1/T1 - docking station cable, 1 m

Compatible with N1, T1



Passport M Series to N1/T1 Docking Station Cable, 4m

009-00352-00

Passport M Series to N1/T1 - docking station cable, 4 m

Compatible with N1, T1



Passport M Series to N1/T1 Docking Station Cable, 10m

009-005894-00

Passport M Series to N1/T1 - docking station cable, 10 m

Compatible with N1, T1



N-Series Docking Station Cable, 2 m

009-006593-00

Cable connects the N-Series to N1/T1 docking station cable, 2 m

Compatible with N12



N-Series Docking Station Cable, 4 m

009-005123-00

Cable connects the N-Series to N1/T1 docking station cable, 4 m

Compatible with N12, N15, N17, N19, N22



N-Series Docking Station Cable, 10 m

009-006594-00

Cable connects the N-Series to N1/T1 docking station cable, 10 m

Compatible with N12, N15, N17, N19, N22



N-Series Docking Station Cable, 20 m

009-009766-00

Cable connects the N-Series to N1/T1 docking station cable, 20 m

Compatible with N12, N15, N17, N19, N22

Ethernet (CS1) Cables



CAT 5 Ethernet Cable, Crossover, 6'

0012-00-1392-06

CAT 5 Ethernet Cable, Crossover, STP, 6' (1.83 m)

Compatible with Passport 2, Passport V, Spectrum, Spectrum OR, V12, V21



CAT 5 Ethernet Cable, Patch, 6'

0012-00-1274-01

CAT 5 Ethernet Cable, Patch, STP, 6' (1.83m)

Compatible with Passport 2, Passport V, Spectrum, Spectrum OR, V12, V21

Gas Module Cables



Serial Port to Gas Module Cable, 1'

0012-00-1276-01

Cable, Serial Port to Gas Module, 1' (0.3 m)

Compatible with Passport 2, Passport V, Spectrum, Spectrum OR



Serial Port to Gas Module Cable, 6'

0012-00-1276-02

Cable, Serial Port to Gas Module, 6' (1.8 m)

Compatible with Passport 2, Passport V, Spectrum, Spectrum OR

Grounding Cable



Grounding Cable

1000-21-00122

Grounding Cable

Compatible with DPM 4, DPM 5, DPM 6, DPM 7, Passport 12m, Passport 17m, ePM 10M, ePM 12M, N12, N15, N17, N19, N22

IABP Cables



Analog Output Cable (IABP)

6800-20-50146

Analog output cable for Intra-aortic balloon pump

Compatible with DPM6, DPM7, Passport 12m, Passport 17m



IABP Interface Cable, V-Series

0012-00-1801-01

IABP Interface Cable

Compatible with V12, V21, N1



IABP and Defib Sync Cable, N-Series

009-005391-00

MPM analog output (IABP) and defib sync cable

Compatible with N1, N12, N15, N17, N19, N22

Nurse Call Cables



Nurse Call Cable

8000-21-10361

Nurse Call Cable

Compatible with Accutorr V, DPM 3, DPM 4, DPM 5, DPM 6, DPM 7, Passport V, N12, N15, N17, N19, N22



Nurse Call Cable

009-003116-00

Nurse Call Cable

Compatible with Accutorr 7, Passport 8, Passport 12, ePM 10m, ePM 12m



Unterminated Nurse Call Cable, 9'

0012-00-1277-02

Unterminated Nurse Call Cable, 9' (2.7 m)

Compatible with Passport 2, Spectrum, Spectrum OR, V12, V21

Power Cords



AC Power Cord, 110V

0012-25-0001

AC Power Cord, 110V

Compatible with Accutorr V, Passport 2, Passport V, Passport 8, Passport 12, Passport 12m, Passport 17m Spectrum, Spectrum OR, V12, V21, Accutorr 3, Accutorr 7, ePM 10m, ePM 12m, N12, N15, N17, N19, N22



T1 Power Supply

115-020874-00

Power supply with power cord

Compatible with T1

Serial Port Cables



Serial Port Cable

009-009117-00

Serial Port Cable

Compatible with ePM 10m, ePM 12m, N12, N15, N17, N19, N22



Interface Cable 0012-00-1275-01

Cable, Interface, PC, Serial Port to Serial Port, 10'

Compatible with Passport 2, Passport V, Spectrum, Spectrum OR, Accutorr 3



Serial Port Cable – (DIAP) 009-003436-00

Cable, Interface, PC, Serial Port to Serial Port

Compatible with Accutorr 3, Accutorr 7, Passport 8, Passport 12, VS9

SMR Cables

SMR Cable, 2 m 009-005121-00

USB cable, 2 m

Compatible with N12, N15, N17, N19, N22

SMR Cable, 4 m 009-011808-00

USB cable, 4 m

Compatible with N12, N15, N17, N19, N22

SMR Cable, 10 m 009-005122-00

USB cable, 10 m

Compatible with N12, N15, N17, N19, N22

USB Cables



USB Cable, 2.3 m 009-005118-00

USB cable, 2.3 m

Compatible with N22, N19



USB Cable, 5 m 009-008237-00

USB cable, 5 m

Compatible with N22, N19



USB Cable, 10 m

009-005120-00

USB cable, 10 m

Compatible with N22, N19



Cable, Mod Bus, Powered USB, 6'

0012-00-1803-12

Cable, mod bus, powered USB, 6'

Compatible with V12, V21



Cable, Mod Bus, Powered USB, 6'

6800-20-50319

Cable, mod bus, powered USB, 6'

Compatible with DPM 6, DPM 7

Video Cables

Video Cable, 2.3 m

009-005115-00

Video cable, 2.3 m

Compatible with N22, N19

Video Cable, 5 m

009-007740-00

Video cable, 5 m

Compatible with N22, N19

Video Cable, 10 m

009-005117-00

Video cable, 10 m

Compatible with N22, N19

Bedrail Mounts



Accutorr 7 Bedrail Mount Kit

115-020575-00

Bedrail clamp mounts the Accutorr 7 to the patient's bed

Compatible with Accutorr 7



Bedrail Mount Kit

0040-00-0293

Bedrail Mount Kit mounts monitor to the bedrail of a patient bed

Compatible with Passport 2, Spectrum, Spectrum OR



ePM Bedrail Clamp

8000-30-90170

Bedrail Clamp

Compatible with DPM 4, DPM 5, ePM 10M, ePM 12M



N1 Bedrail Hook

115-050757-00

Bedrail Hook

Compatible with N1



ePM 10M/ 12M Bedrail Hook

8000-30-90169

Bedrail Hook mounts the monitors to the patient bed

Compatible with DPM 4, DPM 5, ePM 10M, ePM 12M



N12 Bedrail Hook

115-045865-00

Bedrail hook mounts the N12 to a bedrail

Compatible with N12



Passport 8 Bedrail Mount

115-012697-00

Bedrail mount mounts the Passport 8 to patient's bed

Compatible with Passport 8



Passport 12 Bedrail Mount

115-012698-00

Bedrail clamp mounts the Passport 12 to patient's bed

Compatible with Passport 12

Miscellaneous Mounts

Pole Mounting Kit

045-001230-00

Mounting Kit to mount the T1, N1 Docking Station to a pole

Compatible with T1, N1

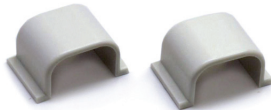


Cable Hooks

0436-00-0206

GCX Cable Hook (mounts under Arm)

Compatible with DPM 6, DPM 7, Passport 12m, Passport 17m, ePM 10M, ePM 12M, N1, N12, N15, N17, N19, N22

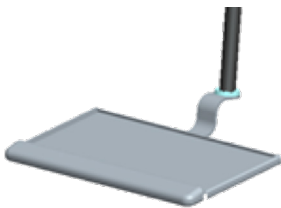


VHM Cable Management Clips

034-000108-00

VHM Cable Management Clips used to organize cables with the VHM wall mount

Compatible with V12, V21



N-Series Keyboard Tray Kit

115-033871-00

GCX M Series Keyboard Tray Kit with 9" down post

Compatible with N1, N19, N22

Keyboard Wall Mount Bracket

045-000934-00

Keyboard wall mount bracket

Compatible with N1, N12, N15, N17, N19, N22

9" Down Post Kit with Cross Clamp

045-003254-00

The 9" down post kit with cross clamp mounts the N1 dock to the GCX VHM or M-Series arms.

Compatible with N1

Mounting Brackets & Plates



Quick Release Mount

045-003424-00

Quick release mounts the N12 to the rolling stand. This product also mounts the N1 to the Mindray Rolling Stand

Compatible with N12, N1



Quick Release Mount

045-003424-00

Quick release mounts the monitors to the rolling stand wall mount.

Compatible with N12, N1, Accutorr 3, Accutorr 7, VS9, ePM 10M, ePM 12M



N1 Wall Mount Quick Release

045-003424-00

Quick release plate mounts the N1 to a GCX wall mount

Compatible with N1

N15/N17 Plate for Rolling Stand

045-000955-00

N15 mounting plate for rolling stand mounts the N15/N17 to the rolling stand

Compatible with N15, N17



Passport 12m/17m GCX Wall Mount Plate

0386-00-0363

This mounting plate mounts the Passport 12m/17m to the 12" GCX M-Series wall mount and the GCX VHM.

Compatible with DPM 6, DPM 7, Passport 12m, Passport 17m



SMR Bracket

045-000933-00

Satellite module rack wall mount bracket.

Compatible with DPM 6, DPM 7, Passport 12m, Passport 17m, N17, N19, N22



Passport 12m Standard Mounting Bracket for Wall Mount 0010-20-42686

The standard mounting bracket is a stationary mounting plate that mounts the Passport 12m to GCX wall mounts.

Compatible with Passport 12m



Passport 12m Quick Release Bracket 045-001275-00

Quick release bracket mounts the Passport 12m to GCX wall mounts.

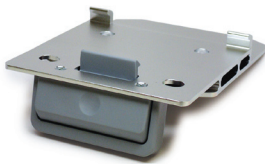
Compatible with Passport 12m



Quick Release Mount for Rolling Stand – Passport 8 and T1 045-000953-00

Quick release mounting bracket mounts the Passport 8 or the T1 to the Mindray Value rolling stand

Compatible with Passport 8, T1 Docking Station



Quick Release Mount for Passport 8 / 12 and T1 045-000954-00

Quick release mounts the Passport 12 to the Transport Rolling stand. This mount also mounts the Passport 8, Passport 12 and T1 to the GCX wall mount.

Compatible with Passport 8, Passport 12, T1 Docking Station

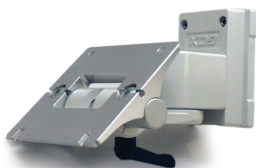


V12 Mounting Bracket 115-003088-00

Mounting bracket for Rolling Stand used to mount the V12 to the V-Series rolling stand

Compatible with V12

Remote Display (RD1) Mounts and Displays



Remote Display Wall Mount 0040-00-0368

GCX flush wall mount used to mount remote flat panel displays

Compatible with Panorama, Passport V, Spectrum, Spectrum OR

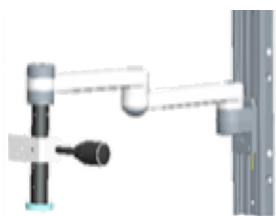


Wall Mount, VHM 0436-00-0210

VHM Arm (VESAmount) for ELO Display.

Compatible with T1, N1

SMR Mounts



M-Series Articulating Arm for Mounting SMR

115-033882-00

M-Series articulating arm with SMR Clamp Mount and 6" down post for mounting SMR

Compatible with N12, N15, N17, N19, N22



SMR Clamp Mounting Kit with 6" Post

115-035995-00

SMR clamp mounting kit with 6" post

Compatible with N12, N15, N17, N19, N22



SMR Clamp Mounting Kit with 9" Post

115-045621-00

SMR clamp mounting kit with 9" post

Compatible with N12, N15, N17, N19, N22

Wall Mounts



M-Series Wall Mount, 16"

045-003427-00

GCX M-Series 16" wall mount includes the quick release mounting plate

Compatible with Accutorr 3, Accutorr 7, VS9, N1



Accutorr Vital Signs 6" Wall Mount

115-025386-00

6" M Series wall mount with basket. Ideal for small rooms where space is limited

Compatible with Accutorr 3, Accutorr 7, VS9



Passport 12m Wall Mount

045-000926-00

GCX M-Series 12" wall mount for Passport 12m includes wall mount and standard mounting bracket (0010-20-42686)

Compatible with DPM 6, Passport 12m



Passport 12m M-Series Wall Mount with Quick Release Bracket

045-001300-00

GCX M-Series wall mount with quick release bracket

Compatible with Passport 12m



Passport 12m VHM Wall Mount with Quick Release

045-001301-00

GCX Variable Height Mount with quick release

Compatible with Passport 12m



Passport 17m Wall Mount

045-000929-00

M-Series 12" wall mount for Passport 17m includes wall mount and standard mounting bracket

Compatible with DPM 7, Passport 17m



Passport 17m VHM Wall Mount with Standard Bracket

045-001302-00

GCX Variable Height Mount with quick release

Compatible with Passport 17m



M-Series Wall Mount

045-000931-00

M-Series 12" wall mount with quick release bracket

Compatible with Passport 8, Passport 12, T1 Docking Station



VHM Wall Mount

045-002148-00

Variable Height Wall Mount with quick release bracket

Compatible with Passport 8, Passport 12, T1 Docking Station, ePM 10m, ePM 12m

Satellite Modular Rack

115-03887-00

8-slot satellite module rack (SMR) with handle, hook, 2 meter cable

Compatible with N15, N17, N19, N22

T1 Docking Station Down Post Kit

045-001228-00

6" Downpost Kit (to mount the N1 dock to VHM or M-Series arm)

Compatible with T1, N1





Wall Mount - 12"

0436-00-0169

GCX M-Series 12" Wall Mount, used to mount Mindray monitors to the wall
Does not include monitor wall mount brackets or plates.

Compatible with Accutorr V, DPM 4, DPM 5 , DPM 6, Passport 2, Passport V, Spectrum, Spectrum OR, Trio, Passport 8, Passport 12, Passport 12m

N19/N22 External Display GCX VHM Arm (VESA Mount)

034-000782-00

N19/N22 External display GCX VHM arm (VESA mount)

Compatible with N19, N22

N19/N22 External Display GCX M-Series 12" Pivot Arm (VESA Mount)

034-000457-00

N19/N22 External Display GCX M Series 12" pivot arm (VESA mount)

Compatible with N19, N22

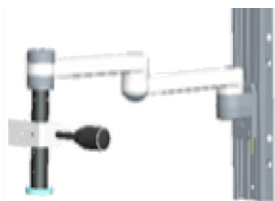


N19/N22 Screen Rotation Kit

121-001636-00

The rotating kit includes 115-033880 Host to GCX Mounting Kit and 115-051379-00 Mounting Kit for rotation

Compatible with N19, N22

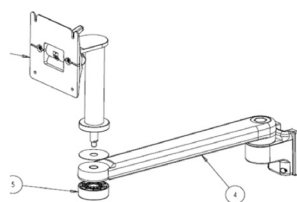


M-Series Articulating Arm for Mounting SMR

115-033882-00

M-Series articulating arm and SMR Clamp Mount w 6" down post for mounting SMR

Compatible with N19, N22



M-Series 16" Arm with 6" Riser to Mount N19/N22 to an Anesthesia System

034-000454-00

Compatible with N19, N22

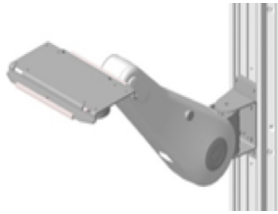


Main Unit to GCX Mounting Kit

115-033880-00

(contained in N19/N22 Rotating Kit Sales BOM pn 121-001636-00)

Compatible with N19, N22



N12/N15/N17 GCX VHM Series Arm with Transition Plate 045-003253-00

N12/N15/N17 GCX VHM series arm with transition plate

Compatible with N12, N15, N17



N12/N15/N17 M-Series 12" Arm with Transition Plate 045-003426-00

N12/N15/N17 M Series 12" arm with transition plate

Compatible with N12, N15, N17



N12/N15/N17 Transition Mounting Plate 045-003425-00

N12/N15/N17 Transition Mounting Plate

Compatible with N12, N15, N17

Mindray™ North America's line of reusable and single patient use disposable blood pressure cuffs are the ideal choice for your noninvasive blood pressure supplies needs. Our cuffs are cost effective yet retain the most important qualities – comfort and accuracy for your patients. Color coded by size for instant identification, reusable and single patient use cuffs are latex free and conform to the standards set by the AHA.

Neonate Blood Pressure Cuffs



Single Patient Use CM1500A Neonatal Blood Pressure Cuff 125-000051-00

CM1500A neonate cuff, single-patient use, limb circumference 3.1 to 5.7cm, box of 20

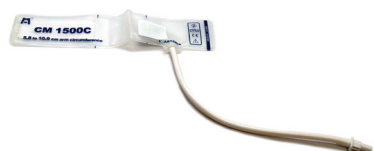
Compatible with DPM 3, DPM 4, DPM 5, DPM 6, DPM 7, Accutorr 3, Accutorr7, VS9, Passport 8, Passport 12, Passport 12m, Passport 17m, T1, N12, N15, N17, N19, N22



Single Patient Use CM1500B Neonatal Blood Pressure Cuff 125-000052-00

CM1500B neonate cuff, single-patient use, limb circumference 4.3 to 8.0cm, box of 20

Compatible with DPM 3, DPM 4, DPM 5, DPM 6, DPM 7, Accutorr 3, Accutorr7, VS9, Passport 8, Passport 12, Passport 12m, Passport 17m, T1, N12, N15, N17, N19, N22



Single Patient Use CM1500C Neonatal Blood Pressure Cuff 125-000053-00

CM1500C neonate cuff, single-patient use cuff, limb circumference 5.8 to 10.9cm, box of 20

Compatible with DPM 3, DPM 4, DPM 5, DPM 6, DPM 7, Accutorr 3, Accutorr7, VS9, Passport 8, Passport 12, Passport 12m, Passport 17m, T1, N12, N15, N17, N19, N22



Single Patient Use CM1500D Neonatal Blood Pressure Cuff 125-000054-00

CM1500D neonate cuff, single-patient use cuff, limb circumference 7.1 to 13.1cm, box of 20

Compatible with DPM 3, DPM 4, DPM 5, DPM 6, DPM 7, Accutorr 3, Accutorr7, VS9, Passport 8, Passport 12, Passport 12m, Passport 17m, T1, N12, N15, N17, N19, N22



Single Patient Use Neonatal Size 1 Blood Pressure Cuff 0683-23-0001

Neonatal Size 1, single patient use, limb circumference: 3 to 6cm, box of 10

Compatible with Accutorr V, Passport 2, Passport V, Spectrum, Spectrum OR, V12, V21



Single Patient Use Neonatal Size 2 Blood Pressure Cuff 0683-23-0002

Neonatal Size 2, single patient use, limb circumference: 5 to 8cm, box of 10

Compatible with Accutorr V, Passport 2, Passport V, Spectrum, Spectrum OR, V12, V21



Single Patient Use Neonatal Size 3 Blood Pressure Cuff 0683-23-0003

Neonatal Size 3, single patient use, limb circumference: 7 to 10cm, box of 10
 Compatible with Accutorr V, Passport 2, Passport V, Spectrum, Spectrum OR, V12, V21



Single Patient Use Neonatal Size 4 Blood Pressure Cuff 0683-23-0004

Neonatal Size 4, single patient use, limb circumference: 9 to 13cm, box of 10
 Compatible with Accutorr V, Passport 2, Passport V, Spectrum, Spectrum OR, V12, V21



Single Patient Use Neonatal Size 5 Blood Pressure Cuff 0683-23-0005

Neonatal Size 5, single patient use, limb circumference: 12 to 17cm, box of 10
 Compatible with Accutorr V, Passport 2, Passport V, Spectrum, Spectrum OR, V12, V21

Neonatal Disposable Cuff Starter Kit 115-076325-00

Neonatal disposable cuff starter kit-includes 1 of each size cuff and hose
 Compatible with N12, N15, N17, N19, N22

NIBP Hoses



NIBP Hose 6200-30-09688

NIBP tubing, Adult/Pediatric/Infant/Neonate
 Compatible with DPM 6, DPM 7, Accutorr 3, Accutorr 7, VS9, Passport 8, Passport 12, Passport 12m, Passport 17m, T1, ePm 10M, ePM 12M, N1, N12, N15, N17, N19, N22



NIBP Hose 509B-30-06259

NIBP tubing, Adult/Pediatric/Infant
 Compatible with DPM 3, DPM 4, DPM 5

Extension Air Hose BP10 040-002379-00

NIBP hose for BP10
 Compatible with BP10



NIBP Hose - Neonate

509B-30-06260

NIBP tubing, Neonatal, 3 m
Compatible with DPM 3, DPM 4, DPM 5



NIBP Hose - Neonate

6200-30-11560

NIBP tubing, Neonatal, with connectors (3 m)
Compatible with DPM 6, DPM 7, Accutorr 3, Accutorr7, Passport 8, Passport 12, Passport 12m, Passport 17m, T1, N1, N12, N15, N17, N19, N22



NIBP Hose, 5'

0683-04-0003

NIBP Hose, 5' (1.5 m), Quick Connect to Quick Connect
Compatible with Accutorr V, Duo, Trio, Passport 2, Passport V, Spectrum, Spectrum OR, V12, V21



NIBP Hose, 10'

0683-04-0004

NIBP Hose, 10' (3.5 m) Quick Connect to Quick Connect
Compatible with Accutorr V, Duo, Trio, Passport 2, Passport V, Spectrum, Spectrum OR, V12, V21

Reusable Blood Pressure Cuffs



Reusable Cuff Starter Kit

115-031807-00

Reusable NIBP Cuff Kit: Includes one Child, Small Adult, Adult, Large Adult, and Thigh cuff
Compatible with Accutorr V, Accutorr 3, Accutorr 7, DPM 3, DPM 4, DPM 5, DPM 6, DPM 7, VS9, Duo, Trio, Passport 2, Passport V, Spectrum, Spectrum OR, V12, V21, Passport 8, Passport 12, Passport 12m, Passport 17m, T1, ePM 10M, ePM 12M, N1, N12, N15, N17, N19, N22, TD60/ TM70/TM80 with BP 10 module



Child Reusable Blood Pressure Cuff

115-027713-00

Reusable NIBP cuff, Child, limb circumference: 10 to 19cm, quick connect
Compatible with Accutorr V, Accutorr 3, Accutorr7, DPM 3, DPM 4, DPM 5, DPM 6, DPM 7, VS9, Duo, Trio, Passport 2, Passport V, Spectrum, Spectrum OR, V12, V21, Passport 8, Passport 12, Passport 12m, Passport 17m, T1, ePM 10M, ePM 12M, N1, N12, N15, N17, N19, N22, TD60/ TM70/TM80 with BP 10 module



Small Adult Reusable Blood Pressure Cuff

115-027714-00

Reusable NIBP cuff, Small Adult, limb circumference: 18 to 26cm, quick connect
Compatible with Accutorr V, Accutorr 3, Accutorr7, DPM 3, DPM 4, DPM 5, DPM 6, DPM 7, VS9, Duo, Trio, Passport 2, Passport V, Spectrum, Spectrum OR, V12, V21, Passport 8, Passport 12, Passport 12m, Passport 17m, T1, TD60, TM80, ePM 10M, ePM 12M, N1, N12, N15, N17, N19, N22, TD60/ TM70/TM80 with BP 10 module



Adult Reusable Blood Pressure Cuff 115-027715-00

Reusable NIBP cuff, Adult, limb circumference: 25 to 35cm, quick connect
 Compatible with Accutorr V, Accutorr 3, Accutorr7, DPM 3, DPM 4, DPM 5, DPM 6, DPM 7, VS9, Duo, Trio, Passport 2, Passport V, Spectrum, Spectrum OR, V12, V21, Passport 8, Passport 12, Passport 12m, Passport 17m, T1, TD60, TM80, ePM 10M, ePM 12M, N1, N12, N15, N17, N19, N22, TD60/ TM70/TM80 with BP 10 module



Adult Long Reusable Blood Pressure Cuff 115-027718-00

Reusable NIBP Cuff, Adult Long, limb circumference: 25 to 35cm, quick connect
 Compatible with Accutorr V, Accutorr 3, Accutorr 7, DPM 3, DPM 4, DPM 5, DPM 6, DPM 7, VS9, Duo, Trio, Passport 2, Passport V, Spectrum, Spectrum OR, V12, V21, Passport 8, Passport 12, Passport 12m, Passport 17m, T1, TD60, TM80, ePM 10M, ePM 12M, N1, N12, N15, N17, N19, N22, TD60/ TM70/TM80 with BP 10 module



Large Adult Reusable Blood Pressure Cuff 115-027716-00

Reusable NIBP cuff, Large Adult, limb circumference: 33 to 47cm, quick connect
 Compatible with Accutorr 3, Accutorr 7, Accutorr V, DPM 3, DPM 4, DPM 5, DPM 6, DPM 7, VS9, Duo, Trio, Passport 2, Passport V, Spectrum, Spectrum OR, V12, V21, Passport 8, Passport 12, Passport 12m, Passport 17m, T1, TD60, TM80, ePM 10M, ePM 12M, N1, N12, N15, N17, N19, N22, TD60/ TM70/TM80 with BP 10 module



Large Adult Long Reusable Blood Pressure Cuff 115-027719-00

Reusable NIBP Cuff, Large Adult Long, limb circumference: 33 to 47cm, quick connect
 Compatible with Accutorr 3, Accutorr 7, Accutorr V, DPM 3, DPM 4, DPM 5, DPM 6, DPM 7, VS9, Duo, Trio, Passport 2, Passport V, Spectrum, Spectrum OR, V12, V21, Accutorr 3, Accutorr 7, Passport 8, Passport 12, Passport 12m, Passport 17m, T1, TD60, TM80, ePM 10M, ePM 12M, N1, N12, N15, N17, N19, N22, TD60/ TM70/TM80 with BP 10 module



Thigh Reusable Blood Pressure Cuff 115-027717-00

Reusable NIBP cuff, Thigh, limb circumference: 46 to 66cm, quick connect
 Compatible with Accutorr 3, Accutorr 7, Accutorr V, DPM 3, DPM 4, DPM 5, DPM 6, DPM 7, VS9, Duo, Trio, Passport 2, Passport V, Spectrum, Spectrum OR, V12, V21, Passport 8, Passport 12, Passport 12m, Passport 17m, T1, ePM 10M, ePM 12M, N1, N12, N15, N17, N19, N22, TD60/ TM70/TM80 with BP 10 module

*Single Patient Use
 Blood Pressure Cuffs*



Child Single Patient Use Blood Pressure Cuff 115-027563-00

Disposable NIBP cuff, Child, limb circumference: 10 to 19cm, quick connect, box of 10
 Compatible with Accutorr V, DPM 3, DPM 4, DPM 5, DPM 6, DPM 7, VS9, Duo, Trio, Passport 2, Passport V, Spectrum, Spectrum OR, V12, V21, Accutorr 3, Accutorr 7, Passport 8, Passport 12, Passport 12m, Passport 17m, T1, ePM 10M, ePM 12M, N1, N12, N15, N17, N19, N22, TD60/ TM70/TM80 with BP 10 module



Small Adult Single Patient Use Blood Pressure Cuff

115-027564-00

Disposable NIBP cuff, Small Adult, 18 to 26cm, quick connect, box of 10

Compatible with Accutorr V, DPM 3, DPM 4, DPM 5, DPM 6, DPM 7, VS9, Duo, Trio, Passport 2, Passport V, Spectrum, Spectrum OR, V12, V21, Accutorr 3, Accutorr 7, Passport 8, Passport 12, Passport 12m, Passport 17m, T1, TD60, TM80, ePM 10M, ePM 12M, N1, N12, N15, N17, N19, N22, TD60/ TM70/TM80 with BP 10 module



Adult Single Patient Use Blood Pressure Cuff

115-027565-00

Disposable NIBP cuff, Adult, limb circumference: 25 to 35cm, quick connect, box of 10

Compatible with Accutorr V, DPM 3, DPM 4, DPM 5, DPM 6, DPM 7, VS9, Duo, Trio, Passport 2, Passport V, Spectrum, Spectrum OR, V12, V21, Accutorr 3, Accutorr 7, Passport 8, Passport 12, Passport 12m, Passport 17m, T1, TD60, TM80, ePM 10M, ePM 12M, N1, N12, N15, N17, N19, N22, TD60/ TM70/TM80 with BP 10 module



Adult Long Single Patient Use Blood Pressure Cuff

115-027568-00

Disposable NIBP Cuff, Large Adult Long, limb circumference: 25 to 35cm, quick connect, box of 10

Compatible with Accutorr V, DPM 3, DPM 4, DPM 5, DPM 6, DPM 7, VS9, Duo, Trio, Passport 2, Passport V, Spectrum, Spectrum OR, V12, V21, Accutorr 3, Accutorr 7, Passport 8, Passport 12, Passport 12m, Passport 17m, T1, TD60, TM80, ePM 10M, ePM 12M, N1, N12, N15, N17, N19, N22, TD60/ TM70/TM80 with BP 10 module



Large Adult Single Patient Use Blood Pressure Cuff

115-027566-00

Disposable NIBP cuff, Large Adult, limb circumference: 33 to 47cm, quick connect, box of 10

Compatible with Accutorr V, DPM 3, DPM 4, DPM 5, DPM 6, DPM 7, VS9, Duo, Trio, Passport 2, Passport V, Spectrum, Spectrum OR, V12, V21, Accutorr 3, Accutorr 7, Passport 8, Passport 12, Passport 12m, Passport 17m, T1, TD60, TM80, eP ePM m 10M, ePM 12M, N1, N12, N15, N17, N19, N22, TD60/ TM70/TM80 with BP 10 module



Large Adult Long Single Patient Use Blood Pressure Cuff

115-027569-00

Disposable NIBP Cuff, Adult Long, limb circumference: 33 to 47cm, quick connect, box of 10

Compatible with Accutorr V, DPM 3, DPM 4, DPM 5, DPM 6, DPM 7, VS9, Duo, Trio, Passport 2, Passport V, Spectrum, Spectrum OR, V12, V21, Accutorr 3, Accutorr 7, Passport 8, Passport 12, Passport 12m, Passport 17m, T1, TD60, TM80, ePM 10M, ePM 12M, N1, N12, N15, N17, N19, N22, TD60/ TM70/TM80 with BP 10 module



Thigh Single Patient Use Blood Pressure Cuff

115-027567-00

Disposable NIBP cuff, Thigh, limb circumference: 46 to 66cm, quick connect, box of 5

Compatible with Accutorr V, DPM 3, DPM 4, DPM 5, DPM 6, DPM 7, VS9, Duo, Trio, Passport 2, Passport V, Spectrum, Spectrum OR, V12, V21, Accutorr 3, Accutorr 7, Passport 8, Passport 12, Passport 12m, Passport 17m, T1, TD60, TM80, ePM 10M, ePM 12M, N1, N12, N15, N17, N19, N22, TD60/ TM70/TM80 with BP 10 module



NMT Cable

040-001462-00

Cable for NMT module

Compatible with Passport 12m, Passport 17m, N12, N15, N17, N19, N22

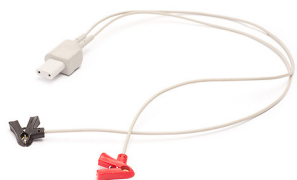


NMT Sensor Cable

040-001463-00

NMT sensors cable for NMT module

Compatible with Passport 12m, Passport 17m, N12, N15, N17, N19, N22



NMT Stimulation Cable

040-001464-00

Stimulation cable for NMT module

Compatible with Passport 12m, Passport 17m, N12, N15, N17, N19, N22



NMT Sensor Securing Strap, Box of 20

040-002258-00

Sensor securing strap used with NMT module

Compatible with Passport 12m, Passport 17m, N12, N15, N17, N19, N22



Recorder Paper - 12 rolls

0683-00-0505-02

Chart Paper for Recorder, 12 rolls

Compatible with Accutorr V, DPM 3, DPM 4, DPM 5, DPM 6, DPM 7, VS9, Passport V, Trio, Accutorr 7, Passport 8, Passport 12, Passport 12m, Passport 17m, ePM 10M, ePM 12M, N12, N15, N17, N19, N22



Recorder Paper - 10 rolls

0683-00-0422-02

Chart Paper for Recorder, 10 rolls

Compatible with Passport 2, Spectrum, Spectrum OR, V12, V21

DPM SpO₂ – Cables



DPM SpO₂ Cable - 6 Pin

0010-20-42594

DPM SPO₂ Cable connects to DPM SPO₂ reusable and single patient use sensors, 6 pin

Compatible with Accutorr V, DPM 3, DPM 4, DPM 5, Passport V



DPM SpO₂ Cable - 7 Pin

0010-20-42710

DPM SPO₂ Cable connects to DPM SPO₂ reusable and single patient use sensors, 7 Pin

Compatible with DPM 6, DPM 7



DPM SpO₂ Extension Cable

0010-20-43075

DPM SPO₂ extension cable, DB9, 1.2 m

Compatible with DPM 1, DPM 2

DPM SpO₂ – Reusable



DPM SpO₂ 512E Adult Soft Sensor

512E-30-90390

DPM SPO₂ 512E Reusable Sensor, Adult Finger with soft cover

Compatible with Accutorr V, DPM 1, DPM 2, DPM 3, DPM 4, DPM 5, DPM 6, DPM 7, DPM CS, Passport V



DPM SpO₂ 512F Adult Sensor

512F-30-28263

DPM SpO₂ 512F Reusable Sensor, Adult, Finger

Compatible with Accutorr V, DPM 1, DPM 2, DPM 3, DPM 4, DPM 5, DPM 6, DPM 7, DPM CS, Passport V



DPM SpO₂ 512G Pediatric Soft Sensor

512G-30-90607

DPM SPO₂ 512G Reusable Sensor, Pediatric Finger with soft cover

Compatible with Accutorr V, DPM 1, DPM 2, DPM 3, DPM 4, DPM 5, DPM 6, DPM 7, DPM CS, Passport V



DPM SpO₂ 512H Pediatric Sensor

512H-30-79061

DPM SPO₂ 512H Reusable Sensor, Pediatric, Finger

Compatible with Accutorr V, DPM 1, DPM 2, DPM 3, DPM 4, DPM 5, DPM 6, DPM 7, DPM CS, Passport V



DPM SpO₂ 518B Multiple Site Sensor 518B-30-72107

DPM SPO₂ 518B Reusable Sensor, Neonatal, Foot (Adult/Pediatric, finger or toe)

Compatible with Accutorr V, DPM 1, DPM 2, DPM 3, DPM 4, DPM 5, DPM 6, DPM 7, Passport V

DPM SpO₂ – Single Patient Use Sensors



DPM SpO₂ 520P Pediatric Sensors 520P-30-64201

DPM SPO₂ 520P Single patient use sensor, Pediatric, 10 to 50kg, 20/box

Compatible with Accutorr V, DPM 1, DPM 2, DPM 3, DPM 4, DPM 5, DPM 6, DPM 7, DPM CS, Passport V



DPM SpO₂ 520A Adult Sensors 520A-30-64101

DPM SPO₂ 520A Single Patient Use sensor, Adult > 30kg, 20/box

Compatible with Accutorr V, DPM 1, DPM 2, DPM 3, DPM 4, DPM 5, DPM 6, DPM 7, DPM CS, Passport V



DPM SpO₂ 520I Infant Sensors 520I-30-64301

DPM SPO₂ 520I Single patient use sensor, Infant, 3 to 20kg, 20/box

Compatible with Accutorr V, DPM 1, DPM 2, DPM 3, DPM 4, DPM 5, DPM 6, DPM 7, Passport V



DPM SpO₂ 520N Neonatal Sensors 520N-30-64401

DPM SPO₂ 520N Single patient use sensor, Neonatal, <3kg, 20/box

Compatible with Accutorr V, DPM 1, DPM 2, DPM 3, DPM 4, DPM 5, DPM 6, DPM 7, Passport V

Mindray™ North America offers both Masimo SET® RD® and Masimo SET® LNCS®, sensors and cables. Reusable SpO₂ sensors are available in pediatric and adult sizes. Available in all patient sizes from neonate to adult, single patient use adhesive sensors are easy to apply, provide durability and improve patient comfort. 100% Latex Free.

Masimo RD® SpO₂ Cables



Masimo RD SET Cable - 8 pin

040-003310-00

Masimo RD SET patient cable connects to Masimo RD SET reusable and single patient use sensors

Compatible with Accutorr 3, Accutorr 7, VS9, Passport 8, Passport 12, Passport 12m, Passport 17m, T1, TD60, TM80, ePM 10M, ePM 12M, N1, N12, N15, N17, N19, N22



RD to LNCS Adapter Cable

040-003381-00

Masimo RD sensors to LNCS cable adapter: Connects Masimo RD Sensors to LNC Patient Cable

Compatible with Accutorr 3, Accutorr 7, VS9, Passport 8, Passport 12, Passport 12m, Passport 17m, T1, TD60, TM80, ePM 10M, ePM 12M, N1, N12, N15, N17, N19, N22



LNCS® to RD Adapter Cable

040-003426-00

Masimo LNCS sensors to RD cable adapter; Connects Masimo LNCS sensors to RD SET patient cable

Compatible with Accutorr 3, Accutorr 7, VS9, Passport 8, Passport 12, Passport 12m, Passport 17m, T1, TD60, TM80, ePM 10M, ePM 12M, N1, N12, N15, N17, N19, N22, TM70/TM80 with Masimo SpO₂

Masimo RD® SpO₂ Reusable Sensors



RD SET DCI®

040-003376-00

SpO₂ sensor, RD SET DCI, Adult (> 30 kg)

Compatible with Accutorr 3, Accutorr 7, VS9, Passport 8, Passport 12, Passport 12m, Passport 17m, T1, TD60, TM80, ePM 10M, ePM 12M, N1, N12, N15, N17, N19, N22, TM70/TM80 with Masimo SpO₂ Module



RD SET DCI-P®

040-003377-00

SpO₂ sensor, RD SET DCI, Pediatric (10-50 kg)

Compatible with Accutorr 3, Accutorr 7, VS9, Passport 8, Passport 12, Passport 12m, Passport 17m, T1, TD60, TM80, ePM 10M, ePM 12M, N1, N12, N15, N17, N19, N22, TM70/TM80 with Masimo SpO₂ Module



RD SET TC-I®

040-003380-00

SpO₂ sensor, RD Set TC-I, tip-clip ear sensor, 3ft, Adult (> 30 kg)

Compatible with Accutorr 3, Accutorr 7, VS9, Passport 8, Passport 12, Passport 12m, Passport 17m, T1, TD60, TM80, ePM 10M, ePM 12M, N1, N12, N15, N17, N19, N22, TM70/TM80 with Masimo SpO₂ Module

Masimo RD® SpO₂ Single Patient Adhesive Sensors



RD SET Adult

040-003382-00

SpO₂ sensor, RD SET Adt, adhesive, Adult (> 30 kg, pkg/20)

Compatible with Accutorr 3, Accutorr 7, VS9, Passport 8, Passport 12, Passport 12m, Passport 17m, T1, TD60, TM80, ePm 10M, ePM 12M, N1, N12, N15, N17, N19, N22, TM70/TM80 with Masimo SpO₂ Module



RD SET Pediatric

040-003383-00

SpO₂ sensor, RD SET PDT, adhesive, Pediatric (10 to 50 kg, pkg/20)

Compatible with Accutorr 3, Accutorr 7, VS9, Passport 8, Passport 12, Passport 12m, Passport 17m, T1, TD60, TM80, ePm 10M, ePM 12M, N1, N12, N15, N17, N19, N22, TM70/TM80 with Masimo SpO₂ Module

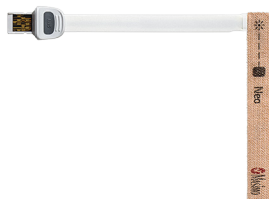


RD SET Infant

040-003384-00

SpO₂ sensor, RD Set Inf, adhesive, Infant (3 to 20 kg, pkg/20)

Compatible with Accutorr 3, Accutorr 7, VS9, Passport 8, Passport 12, Passport 12m, Passport 17m, T1, TD60, TM80, ePm 10M, ePM 12M, N1, N12, N15, N17, N19, N22

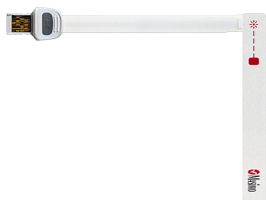


RD SET Neo

040-003385-00

SpO₂ sensor, RD Set Neo, adhesive, Neonatal /Adult (<3kg or >40kg, pkg/20)

Compatible with Accutorr 3, Accutorr 7, VS9, Passport 8, Passport 12, Passport 12m, Passport 17m, T1, TD60, TM80, ePM 10M, ePM 12M, N1, N12, N15, N17, N19, N22



RD SET NeoPt

040-003386-00

SpO₂ sensor, RD Set NeoPt, adhesive, Neonatal (<1 kg pkg/20)

Compatible with Accutorr 3, Accutorr 7, VS9, Passport 8, Passport 12, Passport 12m, Passport 17m, T1, TD60, TM80, ePM 10M, ePM 12M, N1, N12, N15, N17, N19, N22



RD SET NeoPt-500

040-003387-00

SpO₂ sensor, RD Set NeoPt-500, non-adhesive, (<1 kg pkg/20)

Compatible with Accutorr 3, Accutorr 7, VS9, Passport 8, Passport 12, Passport 12m, Passport 17m, T1, TD60, TM80, ePM 10M, ePM 12M, N1, N12, N15, N17, N19, N22

Masimo LNCS® SpO₂ Cables



LNC-4 Masimo SpO₂ Cable

0012-00-1652

LNC-4, Masimo LNCS SpO₂ Patient Cable, 4' (1.2 m)

Compatible with Accutorr V, Duo, Trio, Passport 2, Passport V, Spectrum, Spectrum OR, V12, V21



LNC-10 Masimo SpO₂ Cable

0012-00-1599

LNC-10, Masimo LNCS SpO₂ Patient Cable, 10' (3.1 m)

Compatible with Accutorr V, Duo, Trio, Passport 2, Passport V, Spectrum, Spectrum OR, V12, V21



LNCS® Masimo SpO₂ Cable - 6 Pin

115-023136-00

Masimo LNCS SpO₂ patient cable connects to Masimo LNCS sensors, 6 Pin

Compatible with DPM 3, DPM 4, DPM 5



LNCS® Masimo SpO₂ Cable - 7 Pin

115-023135-00

Masimo LNCS SpO₂ patient cable connects to Masimo LNCS sensors, 7 Pin

Compatible with DPM 6, DPM 7



LNCS® Masimo SpO₂ Cable - 8 Pin

115-020768-00

Masimo LNCS SpO₂ patient cable connects to Masimo LNCS sensors, 8 Pin

Compatible with DPM 6, DPM 7, Accutorr 3, Accutorr 7, VS9, Passport 8, Passport 12, Passport 12m, Passport 17m, T1, ePM 10M, ePM 12M, N1, N12, N15, N17, N19, N22

Masimo LNCS® SpO₂ Reusable Sensors



LNCS® DCI Adult Sensor

0600-00-0126

LNCS DCI Adult Reusable Finger Sensor, patient weight range > 30 kg

Compatible with Accutorr V, DPM 3, DPM 4, DPM 5, DPM 6, DPM 7, VS9, Duo, Trio, Passport 2, Passport V, Spectrum, Spectrum OR, V12, V21, Accutorr 3, Accutorr 7, Passport 8, Passport 12, Passport 12m, Passport 17m, T1, TM70/TM80 with Masimo SpO₂ Module, ePM 10M, ePM 12M, N1, N12, N15, N17, N19, N22



LNCS® DCIP Pediatric Sensor

0600-00-0127

LNCS DCIP Pediatric Reusable Finger Sensor, patient weight range 10 to 50 kg

Compatible with Accutorr V, DPM 3, DPM 4, DPM 5, DPM 6, DPM 7, VS9, Duo, Trio, Passport 2, Passport V, Spectrum, Spectrum OR, V12, V21, Accutorr 3, Accutorr 7, Passport 8, Passport 12, Passport 12m, Passport 17m, T1, TM70/TM80 with Masimo SpO₂ Module, ePM 10M, ePM 12M, N1, N12, N15, N17, N19, N22



LNCS® TC-I Ear Sensor

0600-00-0128

LNCS TC-I Tip Clip Reusable Ear Sensor, patient weight range > 30 kg

Compatible with Accutorr V, DPM 3, DPM 4, DPM 5, DPM 6, DPM 7, VS9, Duo, Trio, Passport 2, Passport V, Spectrum, Spectrum OR, V12, V21, Accutorr 3, Accutorr 7, Passport 8, Passport 12, Passport 12m, Passport 17m, T1, ePM 10M, ePM 12M, N1, N12, N15, N17, N19, N22

Masimo LNCS® SpO₂ Single Patient Adhesive Sensors



LNCS® Adtx Adult Sensors

0600-00-0121

LNCS Adtx - Adult Single Patient Adhesive Sensors, patient weight range > 30 kg (20/box)

Compatible with Accutorr V, DPM 3, DPM 4, DPM 5, DPM 6, DPM 7, VS9, Duo, Trio, Passport 2, Passport V, Spectrum, Spectrum OR, V12, V21, Accutorr 3, Accutorr 7, Passport 8, Passport 12, Passport 12m, Passport 17m, T1, TD60/TM70/TM80 with Masimo SpO₂ Module, ePM 10M, ePM 12M, N1, N12, N15, N17, N19, N22



LNCS® Inf Infant Sensors

0600-00-0158

LNCS Inf - Infant Single Patient Adhesive Sensors, patient weight range 3 to 20 kg (20/box)

Compatible with Accutorr V, DPM 3, DPM 4, DPM 5, DPM 6, DPM 7, VS9, Trio, Passport 2, Passport V, Spectrum, Spectrum OR, V12, V21, Accutorr 3, Accutorr 7, Passport 8, Passport 12, Passport 12m, Passport 17m, T1, ePM 10M, ePM 12M, N1, N12, N15, N17, N19, N22



LNCS® NEO Neonatal Sensors

0600-00-0157

LNCS NEO Neonatal single patient adhesive sensors - for patients more than 3 kg and less than 40 kgs (20/box)

Compatible with Accutorr V, DPM 3, DPM 4, DPM 5, DPM 6, DPM 7, VS9, Passport 2, Passport V, Spectrum, Spectrum OR, V12, V21, Accutorr 3, Accutorr 7, Passport 8, Passport 12, Passport 12m, Passport 17m, T1, ePM 10M, ePM 12M, N1, N12, N15, N17, N19, N22



LNCS® NeoPt Neonatal Preterm Sensors

0600-00-0156

LNCS NeoPt Neonatal preterm single patient adhesive sensors, patient weight range < 1 kg (20/box)

Compatible with Accutorr V, DPM 3, DPM 4, DPM 5, DPM 6, DPM 7, VS9, Passport 2, Passport V, Spectrum, Spectrum OR, V12, V21, Accutorr 3, Accutorr 7, Passport 8, Passport 12, Passport 12m, Passport 17m, T1, ePM 10M, ePM 12M, N1, N12, N15, N17, N19, N22



LNCS® Pdtx Pediatric Sensors

0600-00-0122

LNCS Pdtx- Pediatric Single Patient Adhesive Sensors, patient weight range 10 to 50 kg (20/box)

Compatible with Accutorr V, DPM 3, DPM 4, DPM 5, DPM 6, DPM 7, VS9, Duo, Trio, Passport 2, Passport V, Spectrum, Spectrum OR, V12, V21, Accutorr 3, Accutorr 7, Passport 8, Passport 12, Passport 12m, Passport 17m, T1, TD60/TM70/TM80 with Masimo SpO2 Module, ePM 10M, ePM 12M, N1, N12, N15, N17, N19, N22

Nellcor™ SpO₂ Cables



Nellcor™ OxiMax™ SpO₂ Cable

0012-00-1464

Nellcor OxiMax DOC-10 SpO₂ Cable

Compatible with Accutorr V, Duo, Trio, Passport 2, Passport V, Spectrum, Spectrum OR, V12, V21



Nellcor™ OxiMax™ SpO₂ Cable - 6 Pin

0010-20-42595

Nellcor SpO₂ extension cable, 6 Pin

Compatible with DPM 3, DPM 4, DPM 5



Nellcor™ OxiMax™ SpO₂ Cable

0010-20-42712

Nellcor SpO₂ extension cable

Compatible with DPM 6, DPM 7, Accutorr 3, Accutorr 7, VS9, Passport 8, Passport 12, Passport 12m, Passport 17m, T1, ePm 10M, ePM 12M, N1, N12, N15, N17, N19, N22

Nonin SpO₂ Accessories



Cleaning Plug

0003-00-0055

SpO₂ Module Cleaning Plug

Compatible with Panorama Telepack



Nonin SpO₂ Single Patient Use Adult Sensors

0600-00-0139-24

Adult Single Patient Use Nonin SpO₂ Sensor (24/pkg). Used with Nonin SpO₂ cable.

Compatible with Panorama Telepack, TD60



Nonin SpO₂ – 8000AA Reusable Adult Sensor

100-000077-00

Adult Reusable Nonin SpO₂ Finger Sensor

Compatible with Panorama Telepack, TD60

Rolling Stands



Mobile Rolling Stand, Standard

045-004267-00

Mobile Rolling Stand with quick release mount, basket

Compatible with Accutorr 3, Accutorr 7, ePM 10m, ePM 12m, VS9



N15 / N17 Rolling Stand

045-000915-00

Rolling stand with standard mounting bracket (045-000955-00)

Compatible with DPM 6, Passport 12m, N15, N17

N12 Rolling Stand

045-003255-00

N12 rolling stand with quick release mount

Compatible with N12

N1 Rolling Stand

045-003428-00

N1 rolling stand with quick release mount

Compatible with N1



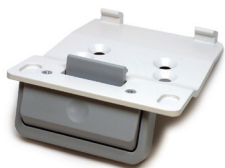
Power Plus Mobile Stand

045-004269-00

The Power Plus Mobile Stand offers a work surface with handle and basket. Add a battery to the work surface for added battery life with the VS9 (battery purchased separately).

Compatible with VS9

Rolling Stand Parts



VS Series Quick Release

045-003424-00

Quick release mount for Accutorr Vital Signs Monitor

Compatible with Accutorr 3, Accutorr 7



Bin - Value Rolling Stand

115-037732-00

Value Rolling Stand Bin

Compatible with Accutorr V, Duo, Trio, Accutorr 3, Accutorr 7, T1, Passport 8



Caster Kit

121-001346-00

Set of 5 casters for value stand and Accutorr Vital Signs Mobile Stand

Compatible with Mobile Rolling Stand 045-002960-00

Cleaning/Disinfecting Wipes Mount

045-002935-00

Use the cleaning / disinfecting wipes mount to attach disinfecting wipes right to the stand for quick access to cleaning supplies. Used with rolling stands 045-002960-00, 045-004268-00, 045-004267-00

Compatible with Accutorr 3, Accutorr 7, ePM10M, ePM 12m, N12

rSO₂ Accessories

INVOS Sensor Cable - Channel 1	100-000164-00
Sensor cable, channel 1, INVOS 5100C, reusable	
Compatible with N12, N15, N17, N19, N22	

INVOS Sensor Cable - Channel 2	100-000165-00
Sensor cable, channel 2, INVOS 5100C, reusable	
Compatible with N12, N15, N17, N19, N22	

INVOS Preamplifier	100-000173-00
Preamplifier, channel 1 & 2, INVOS 5100C, reusable	
Compatible with N12, N15, N17, N19, N22	

ScVO₂ Accessories

CeVOX Fiberoptic Probe - 37cm

040-000919-00

CeVOX fiberoptic probe, 37 cm,disposable (pkg of 1)

Compatible with N12, N15, N17, N19, N22

CeVOX Fiberoptic Probe - 35 cm

040-000920-00

CeVOX fiberoptic probe, 35 cm,disposable (pkg of 1)

Compatible with N12, N15, N17, N19, N22

*Disposable Mindray™
Temperature Probes*



MR411 Esophageal / Rectal Disposable Temp Probe 0011-30-90446

Disposable temperature probe for Adult/Pediatric/Neonatal patients, measurement site: Esophageal/Rectal

Compatible with DPM 4, DPM 5, Passport V, DPM 6, DPM 7, Passport 8, Passport 12, Passport 12m, Passport 17m, T1, N1, N12, N15, N17, N19, N22



MR412 Disposable Skin Temp Probe 0011-30-90447

Disposable temperature probe for Adult/Pediatric/Neonatal patients, measurement site: Skin

Compatible with DPM 4, DPM 5, Passport V, DPM 6, DPM 7, Passport 8, Passport 12, Passport 12m, Passport 17m, T1, N1, N12, N15, N17, N19, N22

Esophageal/Rectal Disposable Temp Probe 040-003294-00

Temperature probe, disposable, adult/pediatric, esophageal/rectal, 9FR (20/pkg)

Compatible with ePM 10M, ePM12M, N12, N15, N17, N19, N22

Skin Surface Disposable Temp Probe 040-003295-00

Temperature probe, disposable, all sizes, skin surface (20/pkg)

Compatible with ePM 10M, ePM12M, N12, N15, N17, N19, N22

*Disposable Temperature
Probes – 400 Series*



ER 400-12 Esophageal/Rectal Disposable Temp Probe 0206-03-0212-02

Esophageal/Rectal, 400 Series Disposable Temperature Probe, 12 Fr. ER 400-12 (20/box)

Compatible with Trio, Passport 2, Passport V, Spectrum, Spectrum OR, V12, V21, DPM 6, DPM 7, Passport 8, Passport 12, Passport 12m, Passport 17m, T1, ePM 10M, ePM 12M, N1, N12, N15, N17, N19, N22



ER 400-9 Esophageal/Rectal Disposable Temp Probe 0206-03-0209-02

Esophageal/Rectal, 400 Series Disposable Temperature Probe, 9 Fr. ER 400-9 (20/box)

Compatible with Trio, Passport 2, Passport V, Spectrum, Spectrum OR, V12, V21, DPM 6, DPM 7, Passport 8, Passport 12, Passport 12m, Passport 17m, T1, ePM 10M, ePM 12M, N1, N12, N15, N17, N19, N22



ES 400-12 Esophageal Stethoscope Disposable Temp Probe 0206-03-0112-02

Esophageal Stethoscope, 400 Series Disposable Temperature Probe, 12 Fr. ES 400-12 (20/box)

Compatible with Trio, Passport 2, Passport V, Spectrum, Spectrum OR, V12, V21, DPM 6, DPM 7, Passport 8, Passport 12, Passport 12m, Passport 17m, T1, ePM 10M, ePM 12M, N1, N12, N15, N17, N19, N22



ES 400-18 Esophageal Stethoscope Disposable Temp Probe 0206-03-0118-02

Esophageal Stethoscope, 400 Series Disposable Temperature Probe, 18 Fr. ES 400-18 (20/box)

Compatible with Trio, Passport 2, Passport V, Spectrum, Spectrum OR, V12, V21, DPM 6, DPM 7, Passport 8, Passport 12, Passport 12m, Passport 17m, T1, ePM 10M, ePM 12M, N1, N12, N15, N17, N19, N22



SK 400 Skin Disposable Temp Probe 0206-03-0300-02

Skin, 400 Series Disposable Temperature Probe, SK 400 (20/box)

Compatible with Trio, Passport 2, Passport V, Spectrum, Spectrum OR, V12, V21, DPM 6, DPM 7, Passport 8, Passport 12, Passport 12m, Passport 17m, T1, ePM 10M, ePM 12M, N1, N12, N15, N17, N19, N22

**Reusable Mindray™
Temperature Probes**



MR Pediatric Skin Temp Probe 040-000058-00

5 pin Temp probe, Pediatric skin; Connects direct to monitor

Compatible with Passport V, V12, V21



MR401 Esophageal/Rectal Adult Reusable Temp Probe 0011-30-90440

MR401 reusable Temperature probe, Adult, Esophageal/Rectal, Audio; Connects direct to monitor

Compatible with DPM 4, DPM 5



MR401B Esophageal/Rectal Adult Reusable Temp Probe 0011-30-37392

MR401B reusable Temperature probe, Adult, Esophageal/Rectal, 2 Pin; Connects direct to monitor

Compatible with DPM 6, DPM 7, Passport 8, Passport 12, Passport 12m, Passport 17m, T1, ePM 10M, ePM 12M, N1, N12, N15, N17, N19, N22



MR402 Esophageal/Rectal Pediatric/Neonatal Reusable Temp Probe

0011-30-90441

MR402 reusable Temperature probe, Pediatric/Neonatal, Esophageal/Rectal, Audio; Connects direct to monitor

Compatible with DPM 4, DPM 5



MR402B Esophageal/Rectal Pediatric/Neonatal Reusable Temp Probe

0011-30-37394

MR402B reusable Temp probe, Pediatric/Neonatal, Esophageal/Rectal, 2 Pin; Connects direct to monitor

Compatible with DPM 6, DPM 7, Passport 8, Passport 12, Passport 12m, Passport 17m, T1, ePM 10M, ePM 12M, N1, N12, N15, N17, N19, N22



MR403 Adult Reusable Skin Temp Probe

0011-30-90442

MR403 reusable Temperature probe, Adult, Skin, Audio; Connects direct to monitor

Compatible with DPM 4, DPM 5



MR403B Adult Reusable Skin Temp Probe

0011-30-37393

MR403B reusable Temperature probe, Adult, Skin, 2 Pin; Connects direct to monitor

Compatible with DPM 6, DPM 7, Passport 8, Passport 12, Passport 12m, Passport 17m, T1, ePM 10M, ePM 12M, N1, N12, N15, N17, N19, N22



MR404 Pediatric/Neonatal Reusable Skin Probe

0011-30-90443

MR404 reusable Temperature probe, Pediatric/Neonatal, Skin, Audio; Connects direct to monitor

Compatible with DPM 4, DPM 5



MR404B Pediatric/Neonatal Reusable Skin Probe

0011-30-37395

MR404B reusable Temp probe, Pediatric/Neonatal, Skin, 2 Pin; Connects direct to monitor

Compatible with DPM 6, DPM 7, Passport 8, Passport 12, Passport 12m, Passport 17m, T1, ePM 10M, ePM 12M, N1, N12, N15, N17, N19, N22

Reusable Temperature Cables



400 Series Reusable Temp Cable

0012-00-0975

Reusable Instrument Cable, 400 Series; For use with 400 series disposable probes: Connects temperature probes to patient monitor

Compatible with Trio, Passport 2, Passport 8, Passport 12, Passport 12m, Passport 17m, Spectrum, Spectrum OR



400 Series Temperature Cable

040-000091-00

Reusable Instrument Cable, 400 Series; for use with 400 Series Disposable Temperature Probes, connects temperature probes to patient monitor

Compatible with Passport V, V12, V21



400 Series Temperature Cable

040-001235-00

This cable directly connects 400 Series disposable temperature probes to the monitor.

Compatible with Passport 8, Passport 12, Passport 12m, Passport 17m, T1, ePM 10M, ePM 12M, N1, N12, N15, N17, N19, N22



Temperature Transition Cable for 400 Series Temp Probes

0010-30-43056

This cable allows the use of the 400 series disposable temperature probes. Connect the transition cable to the module then connect the transition cable to the reusable temp cable, 0012-00-0975.

Compatible with DPM 6, DPM 7, Passport 8, Passport 12, Passport 12m, Passport 17m, T1



MR Temperature Cable

0011-30-37391

Temperature extension cable for use with Mindray™ disposable temperature probes

Compatible with DPM 6, DPM 7, Passport 8, Passport 12, Passport 12m, Passport 17m, T1, N1, N12, N15, N17, N19, N22



MR Temperature Cable

0011-30-90444

Temperature extension cable for use with Mindray™ disposable temperature probes

Compatible with DPM 4, DPM 5

SmarTemp



SmarTemp Oral Probe

6006-30-39598

Oral/Auxiliary probe for use with SmarTemp temperature module

Compatible with Accutorr 3, Accutorr 7, VS9



SmarTemp Oral Probe Blue Sheath

M09A-20-62062

Blue sheath for use with the SmarTemp Oral/Auxiliary probe

Compatible with Accutorr 3, Accutorr 7, VS9



SmarTemp Probe Covers - 2000/case

M09A-30-62128

Probe covers for use with SmarTemp temperature Probes: 2000 pcs/case (100 boxes, 20 pcs/box)

Compatible with Accutorr 3, Accutorr 7, VS9



SmarTemp Probe Covers - Box of 20

M09A-20-62124

Probe covers for use with SmarTemp temperature probes, box of 20

Compatible with Accutorr 3, Accutorr 7, VS9



SmarTemp Rectal Probe

6006-30-39599

Rectal probe for use with SmarTemp temperature module

Compatible with Accutorr 3, Accutorr 7, VS9



SmarTemp Rectal Probe Sheath

M09A-20-62062-51

Sheath for use with the SmarTemp Rectal probe

Compatible with Accutorr 3, Accutorr 7, VS9



Exergen Temporal Scanner

040-003273-00

Exergen Temporal Scanner Measures Temperature

Compatible with Accutorr 7, VS9

Exergen Cable 040-003354-00

Exergen Cable attaches to the Exergen Temporal scanner

Compatible with Accutorr 7, VS9

Welch Allyn® SureTemp® Plus Thermometer Module and Accessories



Welch Allyn® Sure Temp® Plus Probe Covers 040-002471-00

Probe covers for the Welch Allyn® SureTemp Plus thermometer module, 7500/case

Compatible with Accutorr 3, Accutorr 7, VS9



Accutorr 3 Welch Allyn® SureTemp® Plus Bracket 115-025042-00

Mounting bracket used to mount and lock the Welch Allyn® SureTemp Plus thermometer module to the side of the Accutorr 3

Compatible with Accutorr 3



Welch Allyn® SureTemp® Plus Bracket 115-025041-00

Mounting bracket used to mount and lock the Welch Allyn® SureTemp Plus thermometer module to the side of the Accutorr 7

Compatible with Accutorr 7

VS9 Welch Allyn® SureTemp® Plus Bracket 115-073878-00

Mounting bracket used to mount and lock the Welch Allyn® SureTemp Plus thermometer module to the side of the VS9

Compatible with VS9



Welch Allyn® SureTemp® Plus Thermometer Module 0992-00-0198

Welch Allyn® SureTemp Plus Thermometer Module includes one 9' oral probe with oral probe well and a box of 25 probe covers

Compatible with Accutorr 3, Accutorr 7, VS9

healthcare within reach



monitoring • anesthesia • ultrasound

Vision: Better healthcare for all

Mission: Advance medical technologies to make healthcare more accessible

Mindray is a leading developer, manufacturer and supplier of medical device solutions and technologies used in healthcare facilities around the globe. We believe we can change lives by making the most advanced healthcare technology attainable for all. We do this by empowering healthcare professionals through innovative, high-value solutions that help create the next generation of life-saving tools across patient monitoring, anesthesia delivery and ultrasound imaging.

At Mindray, we understand the shift in healthcare from volume to value and continuously deliver solutions that matter in this evolving environment. Our team is disrupting the industry, radically addressing today's needs with the technology of tomorrow. We are creating innovative, game-changing products and partnerships, shaping a new conversation for healthcare providers across North America. We work with thousands of healthcare providers day-to-day to drive the development and implementation of smarter technology – solutions that are simple and affordable, easy to adapt, and return bottom line results and meaningful outcomes. Together, we are creating a higher standard for healthcare.

Mindray North America is headquartered in Mahwah, New Jersey. Our Ultrasound Innovation Center is located in San Jose, California with additional facilities in Nashville, Tennessee and Seattle, Washington.



Mindray North America Corporate Headquarters, Mahwah, NJ



Innovation Center, San Jose, CA

Mindray North America

800 MacArthur Blvd., Mahwah, NJ 07430

Tel: 800.288.2121 Tel: 201.995.8000 Fax: 800.926.4275 www.mindray.com

Mindray® is a registered trademark of Shenzhen Mindray Bio-Medical Electronics Co., Ltd.
All brands and product names are trademarks of their respective owners. Specifications subject to change without notice.
Contact your Mindray Representative for the most current information.

©2022 Mindray DS USA, Inc. Subject to change. 07/22 P/N: 0002-08-5639 Rev F

mindray
NORTH AMERICA