

# Resona 7 Ultrasound System

## Lightning Edition

**The continuing evolution of ZONE Sonography® Technology+ provides a rich package of new diagnostic capabilities and enhancements**

Mindray's Living Technology™ increases clinical value and protects your investment with easily upgradable enhancements to keep your ultrasound system at state-of-the-art performance. Enabled by ZONE Sonography® Technology+ (ZST+), the Resona 7 Lightning Edition significantly broadens the scope of applications for general imaging, vascular, women's imaging, and shared service applications.



## Performance Enhancements

*Covered under Living Technology*

- Glazing Flow
- Optimized iLive rendering algorithm
- Optimized Hyaline feature
- Smart Pelvic improvements
- HiFR contrast enhanced ultrasound (CEUS)
- HiFR Sound Touch Elastography (STE)

## Workflow Enhancements

*Covered under Living Technology*

- Shear wave expanded to additional existing transducers
- CEUS expanded to additional existing transducers
- Pediatric DICOM SR

## New Capabilities and Transducers

*Purchasable options*

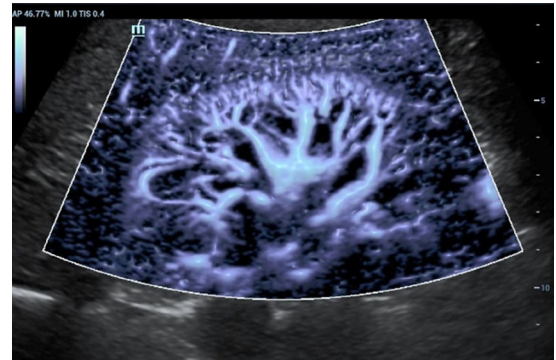
- Smart Scene 3D
- Smart Intracranial Volume
- Smart Fetal Heart Rate
- Smart Hip
- Auto Ejection Fraction
- Smart Trace
- Smart VTrace

**mindray**

# Resona 7 Lightning Edition Features

## Glazing Flow

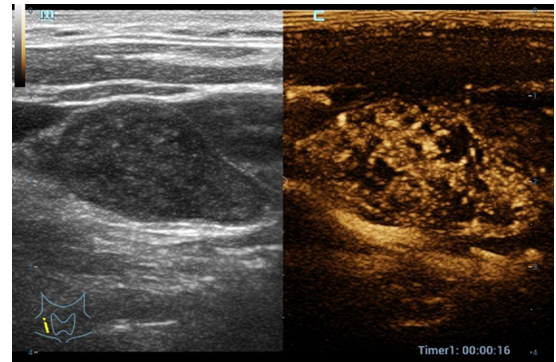
Mindray's enriched Glazing Flow provides optimal visualization of micro-vascular perfusion states and improves delineation of vessel borders in an intuitive, 3D visualization technology.



Glazing Flow displaying microvasculature of the kidney

## HiFR UWN+ Contrast Enhanced Ultrasound

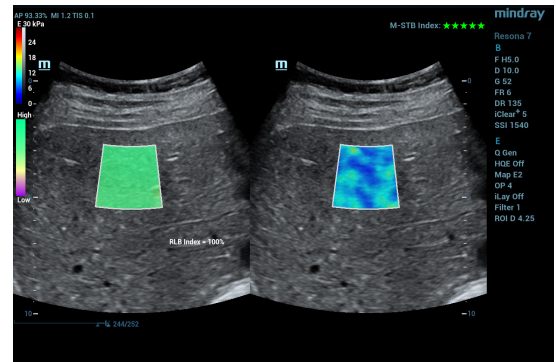
Mindray's second generation Ultra-Wideband Non-Linear (UWN+) CEUS imaging now benefits from high frame rate imaging on expanded transducers. Powered by plane wave imaging on linear transducers, HiFR CEUS+ improves visualization of vascular perfusion in the arterial phase.



HiFR CEUS of a superficial lymph node

## HiFR Sound Touch Elastography

Mindray's high frame rate STE allows for smoother transition times and faster refresh rates for more consistent acquisition and assessment during live 2D shear wave imaging.



HiFR STE of normal liver tissue

### Mindray North America

800 MacArthur Blvd., Mahwah, NJ 07430

Tel: 800.288.2121 Support: 877.913.9663 Fax: 800.926.4275 [www.mindray.com](http://www.mindray.com)

Mindray® is a registered trademark of Shenzhen Mindray Bio-Medical Electronics Co., Ltd. All brands and product names are trademarks of their respective owners. ©2020 Mindray DS USA, Inc. Subject to change. 11/21 P/N: 0002-08-40557 Rev A

# mindray

healthcare within reach