

With over 20 years of experience, Mindray hosts a wide range of ultrasound imaging solutions including cart-based and portable systems. Being exported to over 190 countries, Mindray ultrasound systems are today being used by medical professionals for general as well as highly dedicated clinical utility. With a global R&D base spanning over Asia, Europe and America, the ultrasound solutions by Mindray are a result of an integral cooperation with the medical community, allowing for the ultrasound systems to be extremely user centric in terms of performance and usability. Mindray is well positioned to become one of the leading ultrasound imaging solutions provider.



## DC-60

Diagnostic Ultrasound System

Quality Exams  
at Your Fingertips

Mindray Building, Keji 12th Road South,  
High-tech Industrial Park, Nanshan, Shenzhen 518057, P.R. China  
Tel: +86 755 8188 8998 Fax: +86 755 26582680  
E-mail: intl-market@mindray.com www.mindray.com

**Mindray is listed on the NYSE under the symbol "MR"**

**mindray** | healthcare within reach are registered trademarks or trademarks owned by Shenzhen Mindray Bio-medical Electronics Co., LTD.  
© 2014 Shenzhen Mindray Bio-Medical Electronics Co., Ltd. All rights reserved. Specifications subject to changes without prior notice.  
P/N:ENG-DC-60-BROCHURE-210285x10P-20150318

**mindray**

**mindray**  
healthcare within reach

Mindray's DC-60, incorporating innovative technologies from advanced ultrasound systems, delivers optimal image quality and a wide range of application capabilities all at an affordable cost. In particular, its unique touch gesture feature is designed to help improve workflow and facilitates ease and confidence of use, enabling you to put patient care first. Automation tools including standardized exam protocols and a number of auto-measurement packages, would help you reduce scan time, and increase everyday efficiency. Mindray understands the reality of tight working spaces, so the DC-60 lightweight system has a small footprint for increased portability and maneuverability. In short, DC-60's capabilities and efficiency make it a practical choice and a good investment for clinicians.



## Advanced technology ensures quality exams

Benefitting from a rich line of innovation, the DC-60 incorporates the latest in Mindray's unique technology. Product design focuses on reliable image quality, and also greatly enhances the experience of operating an ultrasound system in daily clinical practice, with the goal of allowing the clinicians to perform quality exams.

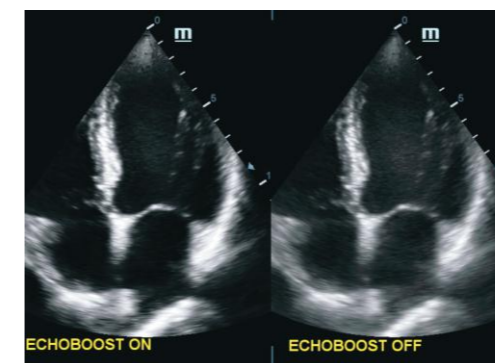
High performance, powered by imaging technologies including iClear, iBeam, PSH, Echo Boost, and highly user-centric operation techniques, means the DC-60 is a hard-working machine addressing challenges faced by you while scanning under pressure.

### PSH

Phase shift harmonic imaging (PSH), also known as purified harmonic imaging, plays an important role in reducing noise while preserving tissue definition and resolution.

### Echo Boost™

As Mindray's new breakthrough image processing technology, Echo Boost is designed to utilize native raw signals to enhance the weak echo signals while suppressing surrounding noise, providing you with a clearer chamber view and improved visualization of the myocardial tissue layers.



### Versatile transducers solution

The DC-60's versatile transducers solution allows you cover extensive exams on one machine, at an attractive price. Mindray's transducer technologies are designed to help deliver exceptional quality of care. The frequency of L14-6NE high-density transducer reaches up to 16MHz, improving the ability to detect detailed tissue information and thereby enhancing the diagnostic confidence of the clinician.



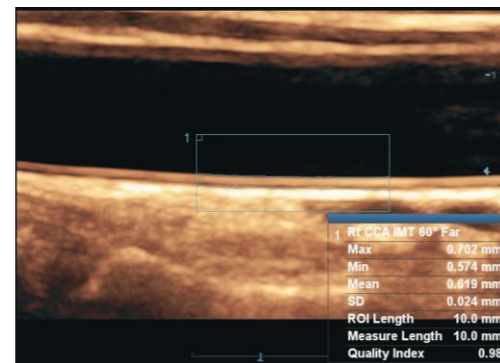


# Shared service meets every need

Thanks to the DC-60's shared service capabilities, reliable image quality for patients of various ages and sizes in diverse clinical areas is now available all with one intelligent ultrasound machine. Covering general imaging, cardiology and OB/GYN, the DC-60 has professional tools such as Auto IMT, iNeedle, TDI and QA, 4D imaging and Smart OB to help complete daily exams easily and precisely.

## Auto IMT

The DC-60's Auto IMT not only detects the thickness but also provides the IMT trend graph, which allows a more accurate assessment of a patient's risk of developing cardiovascular disease.



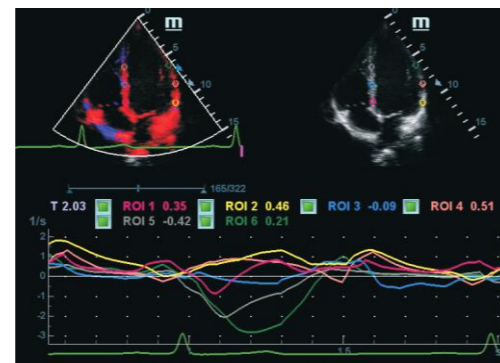
Auto IMT

## iScape™ (Real time panoramic imaging)

The DC-60's iScape function extends the field of view and gives a better understanding of whole anatomical structures.

## TDI and QA with Strain/Strain Rate

The TDI functionality of the DC-60 facilitates quantitative evaluation of regional myocardial movement and global myocardial function, providing complete TDI modes for faster and more direct diagnoses.



Strain Rate Based on TDI

## 4D Imaging

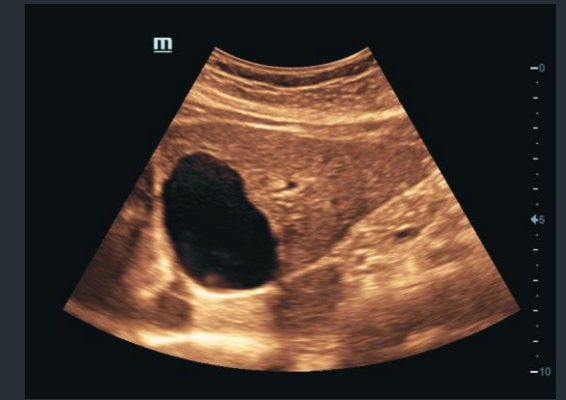
4D imaging technology delivers a range of tools that help take advantage of the full value of volume data. With rich rendering modes and iPage (multi-slice imaging), more information on fetus structure is made available to make a more confident diagnosis.

## Smart OB™

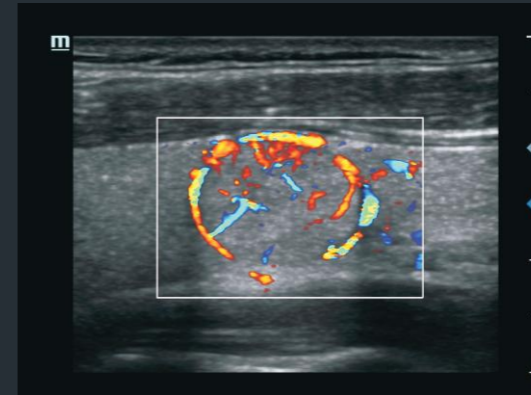
Accurate auto measurements of the most frequently examined parameters including BPD/HC/FL/AC/OFD on a single click.



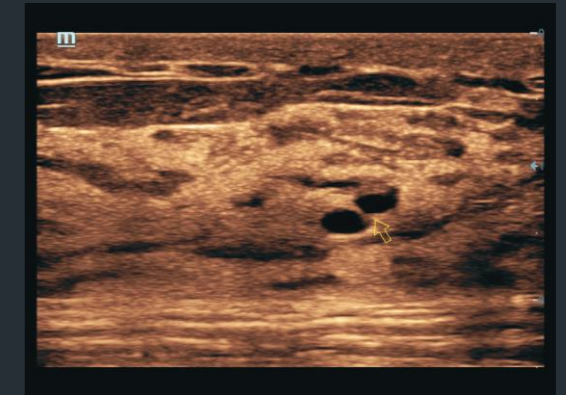
IVC & Portal Vein



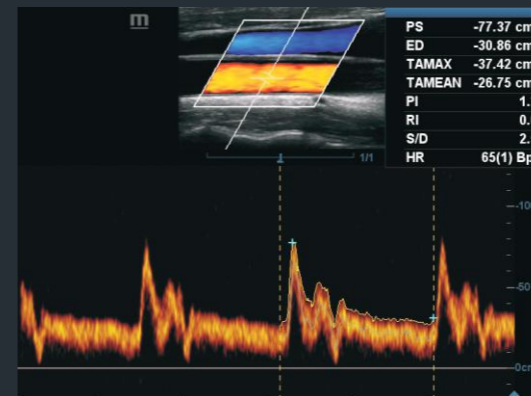
Left Lobe Liver Cyst



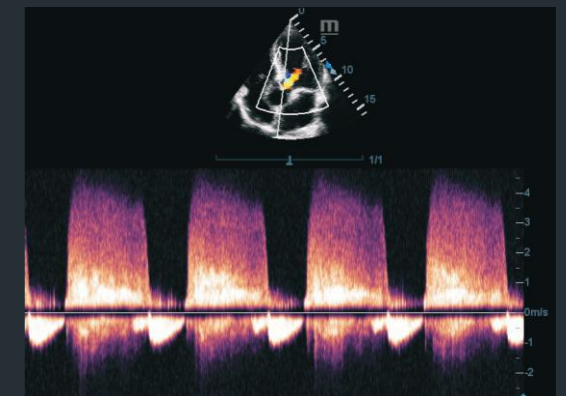
Thyroid Adenoma with HR Flow



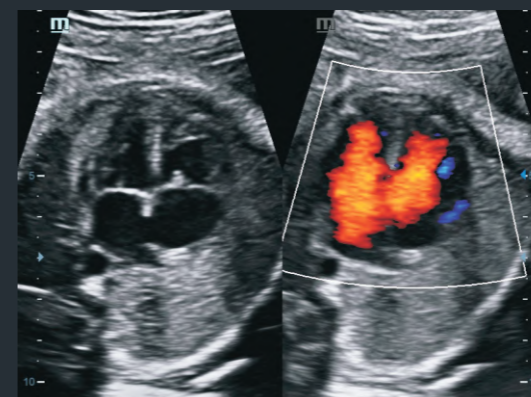
Dense Breast Tissue with Dilated Ducts



CCA Triplex Auto Trace Measurement



Aortic Regurgitation CW Doppler



4C Fetal Heat with Dual Mode



3D Fetal Face

Get more done faster



**Touch-Screen Gesture**

With touch-screen gesture, a brand-new operation experience is at your fingertips, creating a new standard and style for workflow. The clinician can complete most of the operations just with the touch screen. Whether it's swiping to review images, shifting the image to and from the monitor, zooming in/out, measuring or starting user-defined functions with specific hand motions, the DC-60 allows you to get more done, much faster.

**Auto Measure**

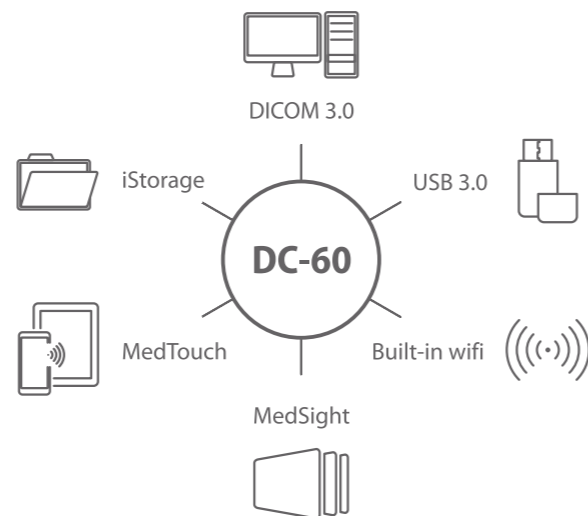
Application-specific auto-measurement packages include Auto IMT, Auto LV, auto PW trace & calculation, Smart OB and Smart NT, all reducing repetitive button pushes and steps, thus streamlining workflow.

**Raw Data**

Clinicians now have the freedom to perform image adjustments, measurements and other functions after the exam is completed.

**Connectivity**

DC-60 provides robust DICOM connectivity and is compatible with many imaging IT solutions, giving more flexibility. This connectivity allows you to save images to various devices, like PACS, USB, PC and smart devices.



17" LED monitor with 180° rotatable angle

10.4" gesture sensitive touch screen with adjustable angle

Gel warmer

Rotatable and height adjustable control panel

Easy & fast USB 3.0

Dedicated endocavity transducer holder

Detachable transducer holders

Cable hook

4 active transducer sockets

Foot rest