

**mindray**  
healthcare within reach

## BC-6800Plus Auto Hematology Analyzer

More than Fast

Mindray Building, Keji 12th Road South,  
High-tech Industrial Park, Nanshan, Shenzhen 518057, P.R. China  
Tel: +86 755 8188 8998 Fax: +86 755 26582080  
E-mail: info.marketing@mindray.com www.mindray.com

P/N: ENG-BC-6800Plus-77X24P-20171016

Mindray and the logo are registered trademarks or trademarks owned  
by Shenzhen Mindray Bio-medical Electronics Co., Ltd.  
©2017 Shenzhen Mindray Bio-medical Electronics Co., Ltd. All rights reserved.  
Specifications subject to change without prior notice.

**mindray**

## BC-6800Plus Auto Hematology Analyzer

More than Fast

**Principles**  
SF Cube™ method to count WBC, 5-part diff, NRBC, RET and PLT-O  
Focusing flow-DC method for RBC and PLT  
Cyanide free reagent for hemoglobin test  
\*S: Scatter; F: Fluorescence; Cube: 3D analysis

**Mode**  
CBC, CBC+DIFF, CBC+DIFF+RET, CBC+RET, RET

**Data storage capacity**  
Up to 10,000 results including numeric and graphical information

**Operating environment**  
Temperature: 15°C ~32°C  
Humidity: 30%~85%

**Loading capacity**  
Up to 100 sample tubes

Parameter	Linearity Range	Precision	Carryover
WBC	0-5000×10 <sup>9</sup> /L	±2.5% (≥4×10 <sup>9</sup> /L)	≤1.0%
RBC	0-6.60×10 <sup>12</sup> /L	±1.5% (≥3.5×10 <sup>12</sup> /L)	≤1.0%
HGB	0-260g/L	±1.0% (110-180g/L)	≤1.0%
HCT	0-75%	±1.5% (50%-50%)	≤1.0%
PLT	0-5000×10 <sup>9</sup> /L	±4.0% (≥100×10 <sup>9</sup> /L)	≤1.0%
RET#	0-0.8×10 <sup>12</sup> /L	±15% (RBC<3×10 <sup>12</sup> /L; / 1%>RET#<4%)	/

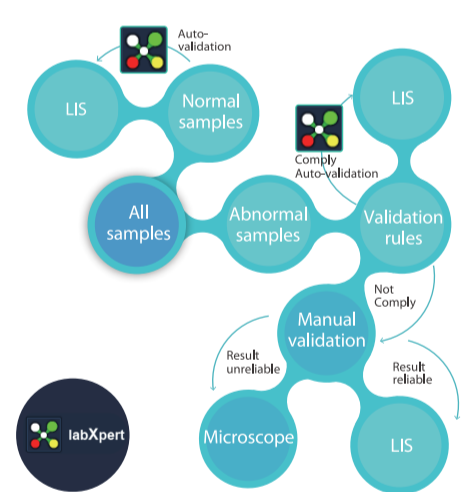
**Sample volume**  
Whole blood (Autoloader) 190μL  
Whole blood (Open vial) 130μL  
Predilute (Open vial) 40μL  
Body fluid (Open vial) 130μL

**Throughput**  
Up to 200 samples per hour (CBC+DIFF)  
Up to 120 samples per hour (CBC+DIFF+RET)  
Up to 120 samples per hour (RET)  
Up to 40 samples per hour (Body fluid)

**Parameters**  
37 Reportable parameters (whole blood): WBC, Lym%, Mon%, Neu%, Bas%, Eos%, IMG%, Lym#, Mon#, Neu#, Eos#, Bas#, IMG#, RBC, HGB, HCT, MCV, MCH, MCHC, RDW-CV, RDW-SD, NRBC#, NRBC%, PLT, MPV, PDW, PCT, P-LCR, P-LCC, RET%, RET#, RHE, IRF, LFR, MFR, HFR, IPF  
42 Research parameters (whole blood): HFC#, HFC%, RBC-O, PLT-O, PLT-I, WBC-O, WBC-D, TNC-D, IME#, IME#, H-NR#, L-NR#, NLR, PLR, WBC-N, TNC-N, INR#, INR#, Micro#, Micro#, Macro#, Macro#, BS, H-IPF, IPF#, MPV, FRCA, FRC#, PDW-SD, Neu-X, Neu-Y, Neu-Z, Lym-X, Lym-Y, Lym-Z, Mon-X, Mon-Y, Mon-Z, SRBC, LRBC, SMCV, LMCV  
7 Reportable parameters (body fluid): WBC-BF, TC-BF#, MN#, MN#, PMN#, PMN%, RBC-BF  
11 Research parameters (body fluid): Eos-BF#, Eos-BF#, Neu-BF#, Neu-BF#, HF-BF#, HF-BF#, RBC-BF, LY-BF#, LY-BF#, MO-BF#, MO-BF%

2 Histograms for RBC and PLT  
3 Three-dimension scatter grams: DIFF, WNB, RET  
5 Two-dimension scatter grams: DIFF, WNB, RET, RET-EXT, PLT-O

### More Intuitive labXpert software



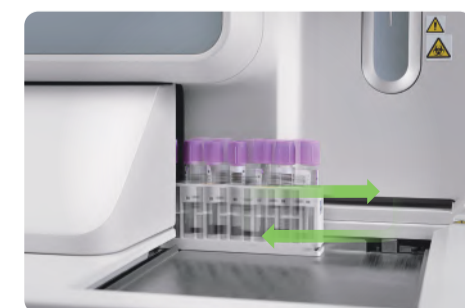
#### Less testing time

BC-6800Plus can load up to 100 samples at a time and offers a throughput of up to 200 tests per hour.



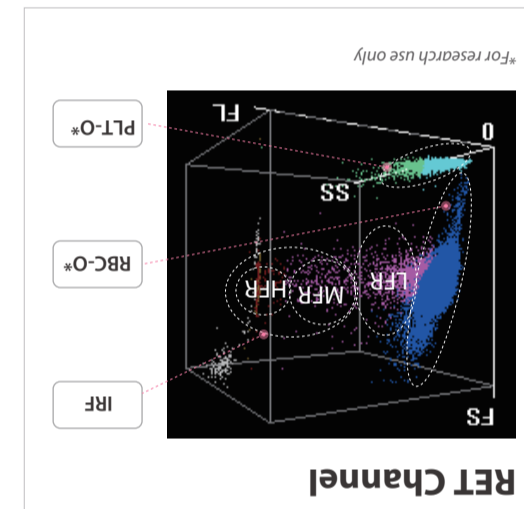
#### Touch screen

BC-6800Plus can work standalone and has touch screen for basic operation by more intuitive software.

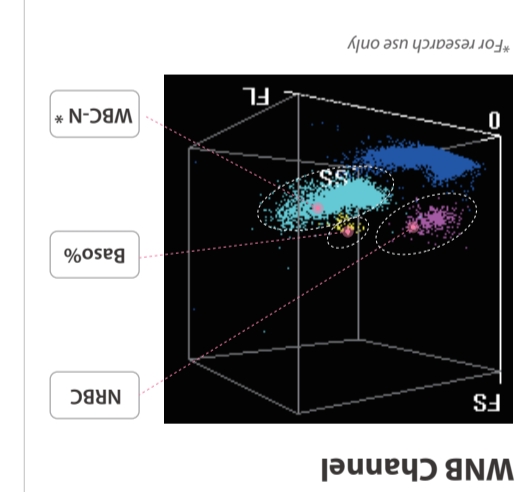


#### Automatic Rerun & Reflex

Should the sample results trigger the criteria, the autoloader of BC-6800Plus can return the sample racks for an automatic rerun or reflex check.

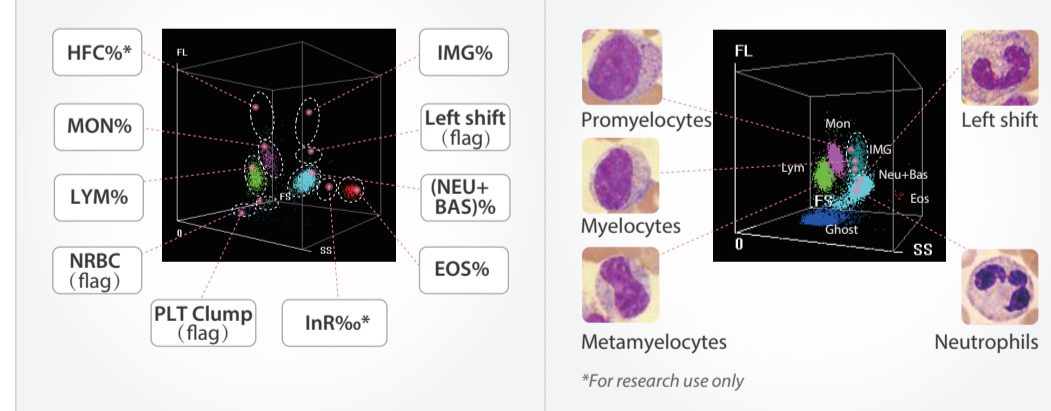


#### RET Channel

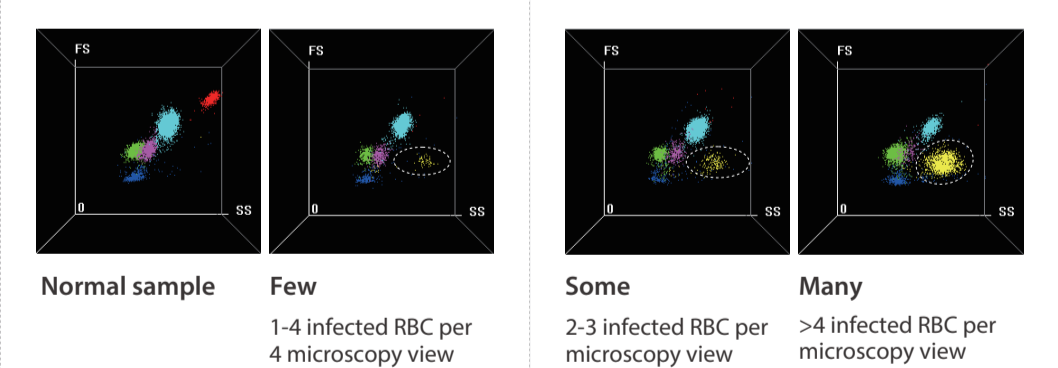


#### WNB Channel

#### DIFF Channel



#### Malaria screening



Note: The yellow scatters are just for highlight.

