



z.one_{pro} Ultrasound System Specification Sheet

Specifications

- ZONE Sonography™ Technology (ZST) 2
- Architecture 2
- Applications 2
- Site Requirements 2
- System Warranty 2
- Dimensions 3
- System Design 3
- Display 3
- User Interface 4

Transducers

- C4-1 Curved Array 5
- C6-2 Curved Array 5
- C9-3 Curved Array 6
- C10-3 Curved Array 6
- E9-4 Endocavity 7
- L8-3 Linear Array 7
- L10-5 Linear Array 8
- L14-5sp (Special Procedures) Linear Array 8
- L14-5w (Wide Field-of-View) Linear Array 9
- P4-1c Phased Array 9
- A2CW 10
- A5CW 10
- P8-3TEE Phased Array 10
- Transducer Performance Data 11

Imaging Modes

- B-Mode 12
- M-Mode 12
- Color and Power Doppler 13
- Pulsed Wave Doppler 13
- Continuous Wave Doppler 14
- Dual Imaging 14
- Simultaneous Dual Imaging 14
- Imaging Mode Combinations 14
- Imaging Formats 15
- Contrast Enhanced Ultrasound 15
- Auto-Opt with ZST 15
- Acoustic Zoom 15
- Display Zoom 15

Specifications

- Image Display 16
- Cine Memory 16

- Exam Management & Presets 17
- Image Management 17
- Connectivity 18
- Optional Peripherals 18
- User Editable Worksheets Option 18

Measurements & Analysis

- Auto-Dop Trace (Automatic Doppler Measurements) 19
- General Capabilities 19
- Generic B-Mode Measurements / Calculations 19
- Generic M-Mode Measurements/Calculations 19
- Generic PW Measurements/Calculations 19
- OB Measurements/Calculations 20
- Abdominal Measurements/Calculations 21
- Pediatric Hip Measurement 22
- B-Mode (Fetal Heart) 22
- PW-Doppler (Fetal Heart) 22
- M-Mode (Fetal Heart) 23
- GYN Measurements / Calculations 23
- Vascular Measurements / Calculations 23
- Carotid 23
- Upper Extremity Arterial Calc (Right/Left)
 - Stenosis, Diameter, PW Doppler, Report Page 23
- Lower Extremity Arterial Calc (Right/Left)
 - Stenosis, Diameter, PW Doppler, Report Page 24
- Lower Extremity Venous Measurements
 - Diameter, Checklists, Report Page 24
- Upper Extremity Venous Measurements
 - Diameter, Checklists, Report Page 25

Specifications

- Annotation Package 26
- Safety and Regulatory 26

ZONE Sonography™ Technology (ZST)

ZONE Sonography Technology is an entirely new approach to ultrasound image acquisition and processing. Conventional systems acquire acoustic data line-by-line and focus it with a beamformer using only a small fraction of the actual information contained in the echo data set. **ZONE Sonography Technology** has the ability to utilize all of the information contained in the returning echo data set and as such can cover the field of view in much fewer transmit / receive cycles. While it might be intuitive that simultaneously collecting data from these larger regions would be more efficient, it is understandably less intuitive that fewer acquisitions could result in improved image quality. **ZONE Sonography Technology** enables this performance advantage by retrospectively analyzing these complete echo data sets to synthesize a continuous transmit focus at every image point.

With **ZONE Sonography Technology**, some of the image quality improvements include:

- 1. Focused image across the full field of view**
 - a. Dynamic transmit & receive focus
(Every pixel in the frame is in focus)
 - i. No need for transmit focal zone control and resultant frame rate tradeoffs
 - b. Enhanced image resolution, uniformity, contrast, and penetration
- 2. Faster acoustic acquisition**
 - a. Temporal accuracy (reduced motion blur)
 - b. Acoustic time available to interleave modes without performance compromise
- 3. Patient specific imaging**
 - a. Compensating for physiological sound speed variations in patients
- 4. Novel Techniques**
 - a. Compound contrast imaging
 - b. Flexible image formats (phased array imaging on curved transducers, linear on curved, etc.)

Architecture

- > 100,000 dynamic channels per frame
- Frame Rate: > 60 frames per second
- Total System Dynamic Range 250 dB
- Boot-up time: < 30 seconds

Languages Supported:

- English
- German
- Swedish
- French
- Italian
- Russian
- Spanish

Applications

- Abdominal
- Abdominal Vascular
- Anesthesia
- Breast
- Contrast Enhanced Ultrasound* (CEUS)
- Echocardiography *
- TEE
- Emergency Medicine (FAST Exam, Central Lines, Peripheral Venous Access)
- Endocavity (Endovaginal, Endorectal)
- Prostate
- Gynecologic (including Endovaginal)
- Intraoperative (Vascular/Superficial)
- Interventional (Guided Needle Procedures)
- Musculoskeletal (MSK)
- Neonatal/Pediatric Abdomen, Echocardiography, Head, Hip
- Obstetrics (all trimesters)
- Ocular
- Superficial Parts
- Testicular/Scrotum
- Thyroid
- Transcranial Imaging with Doppler
- Vascular (Extracranial, Peripheral, Deep)

Site Requirements

- 100-240VAC, 50-60Hz
- 180W (616 BTU/hr) with no peripherals
- 470W (1608 BTU/hr) with peripherals
- Ambient air temperature of 0 – 35° Celsius
- Ambient relative humidity of up to 80%, non-condensing
- Ingress Protection Rating: IP20

System Warranty

- 1st year warranty includes parts for normal wear and failure, and labor
- 5 year warranty includes parts for normal wear and failure

* Feature is only available for sale in specific countries. Please contact your local representative for availability.

User Interface

- Streamlined keyboard layout for best user ergonomics
- Optional special procedures UI with fewer hard keys *
- Home base design for easy access to major modes
- Full size, backlit QWERTY keyboard with non-English accents and characters
- OLEDs display customized controls for selected imaging modes provides for a less cluttered keyboard
- Context-sensitive backlit keys
- (8) DGC slide potentiometers with 45 mm travel and +/- 20dB Gain
- (4) User-programmable Function keys
 - Unassigned
 - Archive
 - Auto trace
 - Body Patterns
 - B-Mode
 - B-Steer
 - Bx Guide
 - Compounding
 - Contrast
 - Cursor
 - Custom Preset
 - d-PDI
 - Display Format
 - Dual
 - ECG
 - Elastography
 - Ext. Sync
 - Freeze
 - Full Image Display
 - Hide Pt. Bar
 - Image Width
 - Lt/Rt Invert
 - Microphone
 - Power Dop
 - Presets
 - Print
 - Protocol
 - Record
 - Remove Data Fields
 - Review
 - Shutdown
 - Stpwatch Phse/Reset
 - Stpwatch Start/Stop
 - Simul Dual
 - Transducer
 - Up/Down Invert
- (3) User-programmable Mode keys
 - Unassigned
 - 3D
 - Auto trace
 - Aux CW
 - Contrast
 - CW
 - d-PDI
 - Elastography
 - Presets
 - Power Doppler
 - TDI
 - Transducer
- Context-sensitive onscreen menu
- 38mm diameter trackball

* Option is only available for sale in specific countries. Please contact your local representative for availability.

New transducer technology, wide bandwidth imaging, and multiple frequency imaging with an expanded range of frequencies including Compound Harmonics. These features provide:

- Increased sensitivity and resolution
- More clinical information and expanded applications

The transducers are lightweight and ergonomically designed to offer easier imaging access, increased operator comfort, and greater overall clinical impact across all patient types.

C4-1 Curved Phased Array Transducer

Primary Applications:	Abdominal, Abdominal Vascular, Obstetrics, Fetal Heart, Gynecologic, CEUS*, Needle Guided Procedures
Secondary Applications:	Cardiac
Bandwidth:	4-1MHz
Number of Elements:	64
Physical footprint:	35.5x19.5mm
Radius of Curvature:	34mm
Field of View (Adjustable):	80 degrees
Biopsy Guide:	Optional longitudinal type
Depth:	30cm
Cable Length:	Approx. 2 meters
Weight (excl. cable and connector):	91 grams
Ingress Protection Rating:	IPX 7
12 Frequencies:	
2D and M-Mode:	3 MHz; 1.75 MHz
Tissue Harmonic:	3.5 MHz; 2.5 MHz
Compound Harmonic:	4 MHz
Color / Power Doppler:	2.25 MHz; 1.75 MHz
PW Doppler:	2.5 MHz; 1.6 MHz
CW Doppler:	2.0 MHz; 1.5 MHz
Tissue Doppler:	2.5 MHz:



ZONARE PN: Z119-30

C6-2 Curved Array Transducer

Primary Applications:	Abdominal, Abdominal Vascular, Obstetrics, Fetal Heart, Gynecologic, Needle Guided Procedures
Secondary Applications:	Peripheral Vascular
Bandwidth:	6-2MHz
Number of Elements:	128
Physical footprint:	66x18mm
Radius of Curvature:	50mm
Field of View (Adjustable):	65 degrees
Biopsy Guide:	Optional longitudinal type
Depth:	24cm
Cable Length:	Approx. 2 meters
Weight (excl. cable and connector):	136 grams
Ingress Protection Rating:	IPX 7
11 Frequencies:	
2D and M-Mode:	5.0 MHz; 3.0 MHz
Tissue Harmonic:	6.0 MHz; 4.0 MHz; 3.0 MHz
Compound Harmonic:	6.0; 4.0 MHz
Color / Power Doppler:	3.5 MHz; 2.5 MHz
PW Doppler:	3.0 MHz; 2.0 MHz



ZONARE PN: Z111-30

* Feature is only available for sale in specific countries. Please contact your local representative for availability.

C9-3 Curved Array Transducer

Primary Applications:	Abdominal, Abdominal Vascular, OB, Pediatric/Small Adult Abdomen
Secondary Applications:	Peripheral Vascular
Bandwidth:	9-3MHz
Number of Elements:	128
Physical footprint:	46x14mm
Radius of Curvature:	33mm
Field of View (Adjustable):	67 degrees
Biopsy Guide:	Optional longitudinal type
Depth:	18cm
Cable Length:	Approx. 2 meters
Weight (excl. cable and connector):	91 grams
Ingress Protection Rating:	IPX 7
<i>13 Frequencies:</i>	
2D and M-Mode:	7.0 MHz; 5.5 MHz; 3.5 MHz
Tissue Harmonic:	8.0 MHz; 7.0 MHz; 5.0 MHz
Compound Harmonic:	8.0 MHz; 6.0 MHz
Compound:	7.0 MHz
Color / Power Doppler:	5.0 MHz; 3.5 MHz
PW Doppler:	5.0 MHz; 3.1 MHz



ZONARE PN: Z109-30

C10-3 Curved Phased Array Transducer

Primary Applications:	Neonatal Heart, Neonatal Head, Neonatal Abdominal, Pediatric Echo, Pediatric Abdominal, Ocular
Secondary Applications:	Peripheral Vascular
Bandwidth:	10-3 MHz
Number of Elements:	64
Physical footprint:	~16 mm
Radius of Curvature:	16 mm
Field of View:	80 degrees
Biopsy Guide:	None available
Virtual Apex Array:	N/A
Depth:	14 cm
Cable Length:	Approx. 2 meters
Weight (excl. cable and connector):	45 grams
Ingress Protection Rating:	IPX 7
<i>18 Frequencies:</i>	
2D and M-Mode:	7.5 MHz; 6.0 MHz; 4.0 MHz
Tissue Harmonic:	9.0 MHz; 7.0 MHz
Compound Harmonic:	9.0 MHz; 7.0 MHz
Color / Power Doppler:	6.2 MHz; 5.2 MHz; 4.5 MHz; 3.5 MHz
PW Doppler:	5.0 MHz; 3.5 MHz; 3.2MHz
CW Doppler:	6.0 MHz; 3.6 MHz; 3.2MHz
Tissue Doppler:	7.0 MHz



ZONARE PN: Z124-30

E9-4 Endocavity Transducer

Primary Applications:	Endovaginal including First Trimester Obstetrics, Gyn (uterus, ovaries)
Secondary Applications:	Endorectal including Prostate, Rectal Wall Needle Guided Procedures
Bandwidth:	9-4 MHz
Number of Elements:	128
Physical footprint:	23x20mm
Radius of Curvature:	12mm
Field of View:	135 degrees
Biopsy Guide:	1. Optional disposable 2. Optional re-useable
Virtual Apex Array:	N/A
Depth:	14cm
Cable Length:	Approx. 2 meters
Weight (excl. cable and connector):	159 grams
Ingress Protection Rating:	IPX 7
<i>9 Frequencies:</i>	
2D and M-Mode:	8.0 MHz; 5.0 MHz; 4.0 MHz
Tissue Harmonic:	7.5 MHz; 6.5 MHz
Compound Harmonic:	7.0 MHz
Compound:	7.0 MHz
Color Doppler:	4.5 MHz
PW Doppler:	4.5 MHz



ZONARE PN: Z103-30

L8-3 Linear Array Transducer

Primary Applications:	Peripheral Vascular, Needle Guided Procedures
Secondary Applications:	Pediatric Hips, Technically Difficult Small Parts
Bandwidth:	8-3 MHz
Number of Elements:	128
Physical footprint:	48x11mm
Field of View (Adjustable):	38mm
Biopsy Guide:	Optional transverse type
Virtual Apex Array:	Wider Field of View
Depth:	10cm
Cable Length:	Approx. 2 meters
Weight (excl. cable and connector):	113 grams
Ingress Protection Rating:	IPX 7
<i>12 Frequencies:</i>	
2D and M-Mode:	7.0 MHz; 5.5 MHz; 4.0 MHz
Tissue Harmonic:	7.5 MHz; 6.0 MHz
Compound Harmonic:	7.0 MHz
Spatial Harmonics:	7.0 MHz
Compound Spatial Harmonics:	7.0 MHz
Color / Power Doppler:	5.5 MHz; 4.0 MHz
PW Doppler:	4.6 MHz; 3.5 MHz



ZONARE PN: Z106-30

L10-5 Linear Array Transducer

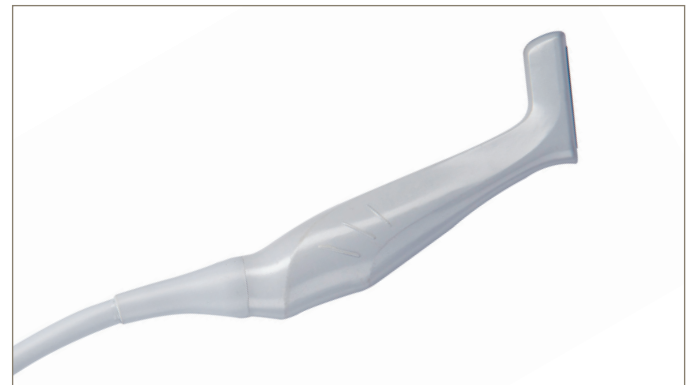
Primary Applications:	Thyroid, Breast, Scrotum, Pediatric Hips, Superficial Parts, Needle Guided Procedures, Ocular
Secondary Applications:	Peripheral Vascular
Bandwidth:	10-5 MHz
Number of Elements:	128
Physical footprint:	48x11mm
Field of View (Adjustable):	38mm
Biopsy Guide:	1. Optional longitudinal type 2. Optional transverse type
Virtual Apex Array:	Wider Field of View
Depth:	10cm
Cable Length:	Approx. 2 meters
Weight (excl. cable and connector):	113 grams
Ingress Protection Rating:	IPX 7
<i>9 Frequencies:</i>	
2D and M-Mode:	8.5 MHz; 6.0 MHz
Tissue Harmonic:	8.0 MHz
Compound Harmonic:	8.0 MHz
Spatial Compound:	8.0 MHz
Spatial Harmonics:	8.0 MHz
Compound Spatial Harmonics:	8.0 MHz
Color / Power Doppler:	5.5 MHz
PW Doppler:	4.6 MHz



ZONARE PN: Z102-30

L14-5sp Linear Array Transducer

<i>(Special procedures)</i>	
Primary Applications:	Intraoperative (Endarterectomy Scanning), Saphenous Vein Mapping, Neonatal, Infant, Pediatric Patients, Needle Guided Procedures, Ocular
Secondary Applications:	Small Parts
Bandwidth:	14-5 MHz
Number of Elements:	128
Physical footprint:	37x13mm
Field of View (Adjustable):	26mm
Biopsy Guide:	Optional transverse type
Virtual Apex Array:	Wider Field of View
Depth:	6cm
Cable Length:	Approx. 2 meters
Weight (excl. cable and connector):	45 grams
Ingress Protection Rating:	IPX 7
<i>12 Frequencies:</i>	
2D and M-Mode:	12 MHz; 9.0 MHz; 5.5 MHz
Tissue Harmonic:	12 MHz
Compound Harmonic:	12 MHz
Spatial Compound:	12 MHz
Spatial Harmonics:	12 MHz
Compound Spatial Harmonics:	12 MHz
Color / Power Doppler:	10 MHz; 7.0 MHz
PW Doppler:	8.0 MHz; 5.0 MHz



ZONARE PN: Z107-30

L14-5w Linear Array Transducer

(Wide field-of-view)

Primary Applications:	Small Parts including Breast, Thyroid, Testes, Superficial Anatomy, Needle Guided Procedures, Ocular
Secondary Applications:	Superficial Vascular
Bandwidth:	14-5 MHz
Number of Elements:	192
Physical footprint:	62x10mm
Field of View (Adjustable):	55mm
Biopsy Guide:	1. Optional longitudinal type 2. Optional transverse type
Virtual Apex Array:	Wider Field of View
Depth:	10cm
Cable Length:	Approx. 2 meters
Weight (excl. cable and connector):	91 grams
Ingress Protection Rating:	IPX 7
<i>12 Frequencies:</i>	
2D and M-Mode:	12 MHz; 7.0 MHz
Tissue Harmonic:	12 MHz
Compound Harmonic:	12 MHz
Spatial Compound:	12 MHz
Spatial Harmonics:	12 MHz
Compound Spatial Harmonics:	12 MHz
Color / Power Doppler:	9.0MHz; 7.0MHz; 5.5 MHz
PW Doppler:	7.0 MHz; 5.0 MHz



ZONARE PN: Z110-30

P4-1c Phased Array Transducer

Primary Applications:	Cardiac, Transcranial Imaging/ Doppler, Trauma (FAST Exams), Deep Abdominal, Abdominal Vascular, Renal, Aorta
Secondary Applications:	Technically Difficult: Obstetrics, Fetal Heart
Bandwidth:	4-1 MHz
Number of Elements:	64
Physical footprint:	27x20mm
Field of View (Adjustable):	84 degrees
Biopsy Guide:	N/A
Virtual Apex Array:	N/A
Depth:	30cm
Cable Length:	Approx. 2 meters
Weight (excl. cable and connector):	91 grams
Ingress Protection Rating:	IPX 7
<i>20 Frequencies:</i>	
2D and M-Mode:	4.0 MHz; 3.0 MHz; 2.5 MHz; 2.0 MHz
Tissue Harmonic:	5.0 MHz; 4.0 MHz; 3.5 MHz; 3.0 MHz
Compound Harmonic:	4.0 MHz
Compound:	3.0 MHz
Color / Power Doppler:	3.0 MHz; 2.5 MHz; 2.0 MHz
PW Doppler:	3.2 MHz; 2.0 MHz; 1.8 MHz
CW Doppler:	3.0 MHz; 2.4 MHz; 2.0 MHz
Tissue Doppler:	3.5 MHz



ZONARE PN: Z108-30

A2CW Transducer *

Primary Applications:	Adult, Adolescent Echocardiography
Secondary Applications:	N/A
Center Frequency:	2.0 MHz
Bandwidth:	> 5%
Number of Elements:	2
Physical footprint:	17mm diameter
Note:	Requires Echocardiography option (CW and ECG) **



ZONARE PN: Z116-00

A5CW Transducer *

Primary Applications:	Peripheral Vascular
Secondary Applications:	N/A
Center Frequency:	5.0 MHz
Bandwidth:	> 10%
Number of Elements:	2
Physical footprint:	11mm diameter
Note:	Requires Echocardiography option (CW and ECG) **



ZONARE PN: Z118-00

* Transducer is only available for sale in specific countries. Please contact your local representative for availability.

P8-3TEE Phased Array Transducer

Primary Applications:	Adult Transesophageal Echocardiography
Secondary Applications:	N/A
Bandwidth:	8-3 MHz
Number of Elements:	64
Physical footprint:	14x10mm
Field of View (Adjustable):	90 degrees
Biopsy Guide:	N/A
Depth:	18cm
Cable Length:	Approx. 2 meters
Ingress Protection Rating:	IPX 7

8 Frequencies:

2D and M-Mode:	7MHz, 6MHz, 5MHz
Color / Power Doppler:	3.6MHz, 2.8MHz
PW Doppler:	3.1 MHz; 2.8MHz
CW Doppler:	3.0 MHz
Tissue Doppler:	3.5 MHz

Note: Requires Echocardiography option **



ZONARE PN: Z115-00

** Feature is only available for sale in specific countries. Please contact your local representative for availability.

Transducer Performance Data at -6dB

Transducer	Axial Resolution (mm)	Lateral Resolution (mm)	Elevation Focus (mm)
C4-1	0.6	1.6	80
C6-2	0.4	0.9	70
C9-3	0.3	0.7	45
C10-3	0.2	0.8	35
E9-4	0.3	0.8	35
L8-3	0.2	0.5	25
L10-5	0.2	0.4	18
L14-5sp	0.2*	0.3	12.5
L14-5w	0.1	0.3	20
P4-1c	0.4	2.4	75
P8-3TEE	0.3	1.5	50

B-Mode

Live Imaging Controls

- Auto-Opt with ZST – Adjust Gain/DGC and Sound Speed Correction
- Depth – up to 30cm (see transducers)
- Frequency change
- Tissue Harmonic Imaging
- Acoustic Zoom
- PW Doppler Cursor
- Acoustic Output
- Dual Imaging
- B-Steer

Live & Retrospective Imaging Controls

- Auto-Opt with ZST – Gain/DGC
- 2D Gain/DGC
- Display Zoom (pan/zoom on frozen image up to 4X mag)
- Grayscale Map
- B Mode Tints
- Dynamic Range
- Persistence
- Edge Enhancement/Smoothing
- Up/Down Invert
- Left/Right Invert

M-Mode

Live Imaging Controls

- Depth
- Frequency
- Tissue Harmonic Imaging
- Cursor Position
- Acoustic Zoom
- Display Zoom (Zoom on Frozen Image)
- Acoustic Output

Live & Retrospective Imaging Controls

- M Gain/DGC
- Sweep Speed
- Strip Tints
- Display Format (Two B reference image sizes and full screen strip)
- M Map
- M Dynamic Range
- Persistence
- Edge Enhancement/Smoothing
- Up/Down Invert
- Left/Right Invert

Color and Power Doppler

Live Imaging Controls

- ROI Position/Size
- ROI Size – up to full screen
- Velocity Scale
- Wall Filter
- Flash Suppression
- Steering Angle (linear transducers only)
- Acoustic Zoom
- Acoustic Output
- Dual Imaging

Live & Retrospective Imaging Controls

- Color Gain
- Display Zoom (Zoom on Frozen Image)
- Color Map
- Edge Enhancement/Smoothing
- Baseline Shift
- Invert
- Persistence

Pulsed Wave Doppler

Live Imaging Controls

- Triplex Mode (simultaneous live 2D, Color, PW Doppler strip)
- Update (quick switch between live 2D or Color and live PW Doppler strip)
- TDI (Tissue Doppler Imaging)
- Cursor Position
- Gate Size 1-15 mm
- Steering Angle in 1 degree increments
- Velocity Scale, Baseline, Filter
- Acoustic Power
- Sweep Speed

Live & Retrospective Imaging Controls

- PW Gain
- Angle Correct – manual 0 to +/-76 degrees
- Angle Correct – 'Quick 60'
- Baseline Shift
- Wall Filter
- Invert
- Strip Tints
- Display Format (1/2; 1/3; full screen strip)
- Sweep Speed (5 speeds)
- PW Map
- PW Dynamic Range
- Audio Volume

Continuous Wave Doppler *

Live Imaging Controls

- Update
- Cursor Position
- Velocity Scale, Baseline Filter
- Acoustic Power
- Sweep Speed (5 speeds)

Live & Retrospective Imaging Controls

- CW Gain
- Dynamic Range
- CW Map
- Velocity Scale
- Baseline Shift
- Wall Filter
- Focal Depth Position
- Display Format (1/2; 1/3; full screen strip)
- Acoustic Power
- Sweep Speed (5 speeds)

Dual Imaging

- Available for all imaging transducers
- Displays two images side-by-side
- Ability to display two frozen, one active/one frozen, or two active images
- Allows Left/Right switching of the active side of the display, while automatically freezing the other side
- Archiving while in dual image will store both images
- All measurements and calculations can be performed across combined dual images
- Annotations and body markers

Simultaneous Dual Imaging

- Available for all imaging transducers
- Displays two images (same or different modes), side-by-side in real-time
- Simultaneous display of Color Velocity & Power Doppler Imaging
- Allows Left/Right switching of the active side of the display: active side allows optimization, mode changes, while both sides are live simultaneously
- Retrospective processing adjustments affect both images at the same time
- Real-time dual image adjustments
- Dual image archiving will store both images in single frame or loop format

Imaging Mode Combinations

- B+CD/PD
- B+M
- B+PW (real-time duplex)
- B+CD/PD+PW (real-time Triplex)
- B+CW (update mode)
- B+CD+CW (update mode)

* Feature is only available for sale in specific countries. Please contact your local representative for availability.

Imaging Formats

- Convex
- Linear
- Phased
- Micro-Convex
- Virtual Apex Array
- Curved Phased
- Image Width – user selectable width and positioning

Auto-Opt with ZST

- Available on all imaging transducers
- Instantly equalizes tissue gain during live or frozen/Cine images
- Automatically measures the various sound speeds within the body habitus and compensates to determine the most accurate

Acoustic Zoom

- Available in all imaging modes

Display Zoom

- Available for all imaging transducers
- From 1.25X to 4X magnification on frozen image, with panning capabilities
- Precise measurement of small structures made easier

Contrast Enhanced Ultrasound* (CEUS)

Contrast Imaging is a harmonic detection mode specifically designed to enhance signals from ultrasound contrast agents similar to 2D (B-Mode), a suite of additional optimization controls are provided to further enhance contrast agent imaging performance.

Available as option on

- C4-1

Display Formats

- Single Image display
- Simultaneous Dual Image display
- Non-Simultaneous Dual Image display

Stopwatch Display

- Elapsed time: The duration of time that passes after the stopwatch is started, usually the time elapsed from the injection of the contrast agent.
- Phase time: The duration of time between the start and stop of a phase. Four phase timers are supported.
- Cine elapsed time: This is the elapsed and phase time for the displayed frame/strip within the Cine memory.

Contrast Imaging User Controls

- Frame rate
- Power
- 2D Gain/DGC
- Contrast Gain
- Depth
- Frequency
- Display Zoom (pan/zoom on frozen image up to 4X mag)
- Dynamic Range
- Edge Enhancement/Smoothing
- Persistence
- Maps
- L/R Invert
- U/D Invert
- Auto-Opt with ZST – Gain/DGC
- Tints
- Compounding
- Harmonics

* CEUS is only available for sale in specific countries. Please contact your local representative for availability.

Image Display

- On-screen display of imaging parameter values
- Frame rate display during live imaging
- On-screen display of acoustic output level and Mechanical Index (MI) and Thermal Index (TI) values per NEMA guidelines
- Patient demographics summary
- Date & Time
- Network and disk activity indicators
- Transducer orientation graphic
- Depth marker graphics
- User interface prompts
- On-screen biopsy graphics

Screen Display

- Analog clock/drive capacity
- Current exam: Images/Clips/Queue
- Recent measurements: Last 3 displayed on screen
- Patient schedule: (works from modality worklist)
- Department schedule: (works from modality worklist)
- Battery capacity
- Hard drive capacity
- Reference image is ¼ size of original image
- Full screen live imaging display

Cine Memory

- Capacity:
 - Store image clips up to 300 seconds
- Cine scroll via trackball control
- Dynamic playback, including duplex & triplex
- Manual trim of Cine loops
- 'Last half' quick trim
- All retrospective imaging parameters available in cine

Cine Loop Storage

- Ability to store Cine loops to internal hard drive

Exam Management & Presets

- Multiple Exam Types supported:
 - Abdominal
 - Echocardiography *
 - Gynecology
 - Obstetrics
 - Pediatric
 - Small Parts
 - Vascular
- Exam Type selection automatically customizes:
 - Patient demographics data forms
 - Calculations
 - Annotations & Body Patterns
 - Imaging Presets
- Factory Imaging Presets for all exam types
- Unlimited user-programmable Imaging Presets
- System Configuration Setup Presets
- Backup and restore capabilities for all system and imaging presets
- Patient demographic information can be populated via manual typing, replicating an archived exam, or DICOM worklist (option)
- International character and accent support via QWERTY keyboard
- Password controlled access to patient information and/or system imaging to aid in HIPAA compliance
- Quick close functionality for designating a complete DICOM study and to aid in HIPAA compliance
- Restart exam capability
- Optional Barcode Reader
- Optional Footswitch

Image Management

- Storage capacity: Internal Hard Drive
- Storage capacity
 - 120GB (or greater) Solid State Drive
 - DICOM uncompressed: ~300,000 images
 - DICOM RLE: ~1,000,000 images
- Protocol Key – selectable Clip capture by time (seconds) or beats; programmable to presets
- Full size archived image review or 9 on1 Thumbnail review
- Interactive exam selection table to aid in quickly selecting archived exam
- Configurable formats:
 - DICOM uncompressed (w/ DICOM Option)
 - DICOM RLE (w/ DICOM Option)
 - JPEG
- Measurements and Annotations on archived images
- Removable USB Memory Stick media for transfer to a PC
- Import/export of exams to DVD+R or CD-R media
- Support for ShowCase Viewer burning to export media
- Ability to export images in non-DICOM format (jpeg, tiff)

* Feature is only available for sale in specific countries. Please contact your local representative for availability.

Connectivity

Inputs & Outputs

- HDMI
- USB 4 ports
- SATA connection
- Ethernet (10/100 Base T)
- Wireless capable via optional bridge

DICOM Option

- Verify Service Class
- Print Service Class
- Store Service Class
- Basic Modality Worklist Query
- In Progress
- Queue for mobile exams with autosend feature upon network connection
- Exam push to DICOM from onboard archive
- Variable compression settings
- Configuration Setup
- Structured Reporting – Vascular
- Structured Reporting – Cardiac
- Structured Reporting – OB / GYN

DICOM Removable Media

- USB Memory Stick
- DVD+R or CD-R media, optional

Optional Peripherals

- Sony UP-D711MD B/W Thermal Printer
 - Printer and Mounting Kit (Bracket): ZONARE PN: Z417-00
 - Mounting Kit only (Bracket): ZONARE PN: Z418-00
- Datalogic Barcode Reader
 - Reader: ZONARE PN: Z373-00

User Editable Worksheets Option

Offline created worksheets can be imported into the system. There is no capability to modify the worksheet template once uploaded onto system. Data and worksheet template is exported in XML format.

Auto-Dop Trace (Automatic Doppler Measurements)

- Automatic tracing of spectral Doppler waveform
- Derived from heart cycle or time
- Independent of PW gain
- Integrates data into Calc Package
- Requires Auto-Opt with ZST option
- Available measurements: RI, PI, Accel, S/D, HR, AT, TAMX, TAMN

General Capabilities

- Interactive worksheets for reviewing and editing in-process results
- Formatted reports for Obstetrics, Gynecology, Echocardiography and Vascular
- Multiple measurements can be used to derive final results (average, last, max)
- Dynamic display of measurement results
- Reposition caliper
- Configurable, customizable calc menus
- Export data feature to third party software
- Export serial data

Generic B-Mode Measurements / Calculations

- Distance: up to 4 diameters
- Circumference/Area (Ellipse or Trace)
- Volume (3 distance)
- % Stenosis (Area or Diameter)
- Depth (from transducer face)

Generic M-Mode Measurements/Calculations

- M distance
- Heart Rate (bpm – beats per minute)
- AV Plane

Generic PW Measurements/Calculations

- Velocity
- Velocity Pairs
- RI (Resistive Index)
- PI (Pulsatility Index)
- Acceleration / Slope
- S/D (Systolic / Diastolic ratio)
- A:B (Generic velocity ratio)
- HR (Heart Rate)
- AT (Acceleration Time)
- TAMX (Time Average Max)
- TAMN (Time Average Mean)
- Volume Flow

OB Measurements/Calculations

- OB Growth trending with graphs
[entries for up to 5 previous studies]
- Biophysical Profile scoring
- Fetal and Maternal Anatomical survey checklists with
5 user programmable anatomy labels
- Biometry percentile reporting with range graphics
- Multiple gestation reporting, up to 5 fetuses
- User programmable Biometry sequence (see below)

Fetal Age

GS (Gestational Sac)	Nyberg (1987)*
CRL (Crown Rump Length)	Hadlock (1992) JMedUltra (2003) Persson (1996)
BPD (Biparietal Diameter)	Hadlock (1984) Hunsmann (1985) JMedUltra (2003) Jeanty (1984) Persson (1986) TokyoShino (1996)
OFD (Occipital Frontal Diam.)	Hansmann (1985) Persson (1986)
HC (Head Circumference)	Hadlock (1984)
CEREB (Cerebellar Diameter)	Goldstein (1987)
BOD (Binocular Diameter)	Jeanty (1984)
AC (Abdominal Circumference)	Hadlock (1984) JMedUltra (2003) TokyoShino (1996)
TTD (Transverse Trunk Diam.)	Hansmann (1985)
AD (Abdominal Diameter)	Persson (1996)
FL (Femur Length)	Hadlock (1984) JMedUltra (2003) Persson (1986) TokyoShino (1996)
TIB (Tibial Length)	Jeanty (1984)
FIB (Fibular Length)	None
HL (Humerus Length)	Jeanty (1984)
RAD (Radial Length)	None
ULNA (Ulnar Length)	Jeanty (1984)
FTA	None
APTD x TTD	TokyoShino (1996)
EFW (Estimated Fetal Weight)	Hadlock (1984) JMedUltra (2003) Persson (1986) Shepard (1982)

Fetal Growth

NBL (Nasal Bone Length)	Bunduki (2003) Sonek (2003)*
GS (Gestational Sac)	Nyberg (1987)
CRL (Crown Rump Length)	JMedUltra (2003) Osaka (1983) Persson (1996)
BPD (Biparietal Diameter)	Hadlock (1984) Hunsmann (1985) JMedUltra (2003) Jeanty (1984) Osaka (1983) Persson (1996) TokyoShino (1996)
OFD (Occipital Frontal Diam.)	Hunsmann (1985) Persson (1986)
HC (Head Circumference)	Hadlock (1984)
CEREB (Cerebellar Diameter)	Goldstein (1987) Hata (1992) Nicolaidis (1994)
BOD (Binocular Diameter)	Jeanty (1982)
AC (Abdominal Circumference)	Hadlock (1984) JMedUltra (2003) TokyoShino (1996)
TTD (Transverse Trunk Diam.)	Hansmann (1985)
AD (Abdominal Diameter)	Persson (1996)
FL (Femur Length)	Hadlock (1984) JMedUltra (2003) Osaka (1983) Persson (1996) TokyoShino (1996)
TIB (Tibial Length)	Jeanty (1984) Merz (1996)
FIB (Fibular Length)	Jeanty (1985) Merz (1996)
HL (Humerus Length)	Jeanty (1984) Osaka (1983)
RAD (Radial Length)	Jeanty (1983) Merz (1996)
ULNA (Ulnar Length)	Jeanty (1984) Merz (1996)
FTA	Osaka (1983)
APTD x TTD	TokyoShino (1996)
EFW (Estimated Fetal Weight)	Hadlock (1984) JMedUltra (2003) Osaka (1983) Persson (1996) TokyoShino (1996) Williams (1982)

* Default authors indicated by bold type

OB Measurements/Calculations *(continued)*

Other Measurements/Calculations

- NT (Nuchal Translucency)
- NBL (Nasal Bone Length)
- AFI (Amniotic Fluid Index)
- HR (Heart Rate): M-Mode or PW
- CI (Cephalic Index)
- FL/AC ratio
- HC/AC ratio
- EFW (Estimated Fetal Weight) by Average Ultrasound Age [AUA] or Composite Ultrasound Age [CUA] [Hadlock, 1984]
- User selectable contributing measurements for CUA / AUA
- User assignable authors: Hadlock, Hansmann, Hellman, Jeanty, Nyberg, Osaka, Tokyo

Doppler

- UT (Uterine) S/D ratio
- Cord S/D ratio
- Umb A (Umbilical Artery) S/D ratio
- Plac (Placenta) peak velocity
- Ut A (Uterine Artery) peak velocity
- Fetal Aorta peak velocity
- MCA (Middle Cerebral Artery) peak velocity

Abdominal Measurements/Calculations

■ Free Fluid Checklist

■ Aorta [B-Mode]

- Aorta [prox / mid / distal]
- R Com Iliac [prox / mid / distal]
- L Com Iliac [prox / mid / distal]

■ Bowel

- Appendix
- Appendix Wall
- Pylorus
- Pylorus Wall

■ GB

- GB Volume
- GB Wall
- CBD [prox / mid / distal]

■ Liver-Spleen

- Liver Volume
- Shunt
- Spleen Volume
- Main Portal Vein
- Hepatic Vein
- PS Confluence
- Sup Mesenteric Vein
- Splenic Vein

■ Pancreas

- Pancreas Head
- Pancreas Neck
- Pancreas Body
- Pancreas Tail
- Panc Duct [prox / mid / dist]

Abdominal Measurements/Calculations *(continued)*

■ Renal

- Right / Left
- Renal Volume
- Renal Vein
- Adrenal Volume
- Ureter [r plv / prox / mid / dist]

■ Bladder Volume

Abdominal Doppler

■ Aorta

- Aorta [prox / renl / mid / distal]
- Celiac Artery [1 /2]
- SMA [1 /2]
- CIA (Common Iliac Artery)
- EIA (External Iliac Artery)
- Hepatic Artery
- Splenic Artery
- GDA
- IMA

■ Renal

- Right / Left
- Renal RI [orig / prox / mid / distal]
- Renal AT [orig / prox / mid / distal]
- Ren A1 RI [orig / prox / mid / distal]
- Ren A1 AT [orig / prox / mid / distal]
- Ren A2 RI [orig / prox / mid / distal]
- Ren A2 AT [orig / prox / mid / distal]
- Hilum [sup / mid / inf]
- Interlob RI [sup / mid / inf]
- Interlob AT [sup / mid / inf]
- Arcuate RI [sup / mid / inf]
- Arcuate AT [sup / mid / inf]

Pediatric Hip Measurement

■ Right / Left

- Hip Angle [Baseline / Bony / Cart]
- Alpha / Beta angles

B-Mode (Fetal Heart)

- Asc Aorta diameter
- MPA (Main Pulmonary Artery) diameter
- Duct Art (Ductus Arteriosus) diameter
- LA (Left Atrium) distance
- RA (Right Atrium) distance
- RV (Right Ventricle) Wall distance (S/D)
- RVID (Right Ventricle Internal Diameter) (S/D)
- IVS (Interventricular Septum) distance (S/D)
- LVID (Left Ventricle Internal Diameter) (S/D)
- LVPW (Left Ventricle Posterior Wall) distance (S/D)
- Heart Circ (circumference)
- Thor Circ (thorax circumference)

PW Doppler (Fetal Heart)

- MV (Mitral Valve) peak velocity (E/A)
- TV (Tricuspid Valve) peak velocity (E/A)
- Asc Aorta peak velocity
- Desc Aorta peak velocity
- MR (Mitral Regurgitation) peak velocity
- TR (Tricuspid Regurgitation) peak velocity
- MPA (Main Pulmonary Artery) peak velocity
- Duct Art (Ductus Arteriosus) peak velocity
- IVC (Inferior Vena Cava) peak velocity
- Duct Ven (Ductus venosus) peak velocity

Measurements & Analysis

M-Mode (Fetal Heart)

- RV (Right Ventricle) Wall (S/D)
- RVID (Right Ventricle Internal Diameter) (S/D)
- IVS (Interventricular Septum) distance (S/D)
- LVID (Left Ventricle Internal Diameter) (S/D)
- LVPW (Left Ventricle Posterior Wall) distance (S/D)

GYN Measurements / Calculations

- Uterine Volume
- Endometrial Thickness
- Cervical Length
- Ovary Volume (Right & Left)
- Up to (10) Right + (10) Left Follicles: reports either volumes calculated from 1, 2, or 3 distances or average distance
- Ov RI (Ovarian RI, Right & Left)
- Ov PI (Ovarian PI, Right & Left)
- Ut RI (Uterine RI)
- Ut PI (Uterine PI)

Vascular Measurements / Calculations

(R/L = Right and Left assignment)

(P/M/D = Proximal, Mid, and Distal assignment)

- % Stenosis (R/L)

Carotid

- CCA (Common Carotid Artery: P/M/D, R/L, PSV/EDV)
- Bulb (R/L, PSV/EDV)
- ICA (Internal Carotid Artery: P/M/D, R/L, PSV/EDV)
- ECA (External Carotid Artery: R/L, PSV/EDV)
- Vertebral (R/L, PSV/EDV)
- ICA/CCA ratio (R/L)
- Subclavian (R/L, PSV/EDV)
- User programmable Carotid Sequence

Upper Extremity Arterial Calc (Right/Left) Stenosis, Diameter, PW Doppler, Report Page

- Subclavian
- Axillary
- Brachial (P/M/D)
- Radial (P/M/D)
- Ulnar (P/M/D)
- Graft Native Inflow
- Graft Prox Anastomosis Pre Velocity
- Graft Prox Anastomosis Max Velocity
- Graft Prox Anastomosis Post Velocity
- Graft (P/M/D)
- Graft Dist Anastomosis Pre Velocity
- Graft Dist Anastomosis Max Velocity
- Graft Dist Anastomosis Post Velocity
- Graft Native Outflow
- Graft Native Inflow Volume Flow
- Graft Prox Anastomosis Volume Flow
- Graft (P/M/D) Volume Flow
- Graft Dist Anastomosis Volume Flow
- Graft Native Outflow Volume Flow

Lower Extremity Arterial Calc (Right/Left) Stenosis, Diameter, PW Doppler, Report Page

- CIA (Common Iliac Artery)
- EIA (External Iliac Artery)
- CFA (Common Femoral Artery)
- PFA (Profunda Femoris Artery)
- FA (Femoral Artery) (P/M/D)
- Popliteal (P/M/D)
- ATA (Anterior Tibial Artery)
- Peroneal
- PTA (Posterior Tibial Artery)
- Dorsalis Pedis
- Graft Native Inflow
- Graft Prox Anastomosis Pre Velocity
- Graft Prox Anastomosis Max Velocity
- Graft Prox Anastomosis Post Velocity
- Graft (P/M/D)
- Graft Dist Anastomosis Pre Velocity
- Graft Dist Anastomosis Max Velocity
- Graft Dist Anastomosis Post Velocity
- Graft Native Outflow
- Graft Native Inflow Volume Flow
- Graft Prox Anastomosis Volume Flow
- Graft (P/M/D) Volume Flow
- Graft Dist Anastomosis Volume Flow
- Graft Native Outflow Volume Flow

Lower Extremity Venous Measurements Diameter, Checklists, Report Page

- Deep
 - IVC (Inferior Vena Cava)
 - CIV (Common Iliac Vein)
 - EIV (External Iliac Vein)
 - CFV (Common Femoral Vein)
 - FV (Femoral Vein) (P/M/D)
 - DFV (Deep Femoral Vein)
 - Popliteal Vein
 - PTV (Posterior Tibial Vein)
 - Peroneal Vein
 - ATV (Anterior Tibial Vein)
- Superficial
 - SF Junction (Sapheno-Femoral)
 - GSV (Greater Saphenous Vein)Thigh (P/M/D)
 - GSV Knee
 - GSV Calf (P/M/D)
 - SP Junction (Sapheno-Peroneal)
 - SSV (Small Saphenous) (P/M/D)
 - AASV (Anterior Accessory Saphenous) (P/M/D)
 - PASV (Posterior Accessory Saphenous)
- Reflux Time PW Doppler Calc
 - Available with all Venous Lower Extremity Presets

Upper Extremity Venous Measurements Diameter, Checklists, Report Page

■ Deep

- Internal Jugular Vein
- Innominate Vein
- Subclavian Vein
- Axillary Vein
- Brachial Vein (P/M/D)
- Radial Vein
- Ulnar Vein
- Volar

■ Superficial

- CA Junc
- Upper Cephalic (P/M/D)
- Lat Antecubital Vein
- Lower Cephalic Vein (P/M/D)
- BA Junc
- Upper Basilic Vein (P/M/D)
- Medial Antecubital Vein
- Lower Basilic Vein (P/M/D)
- Digital

Annotation Package

Text Annotation

- Annotation on live, frozen, & archived images
- Selectable Insert and Overwrite modes
- User-programmable home position
- Selection, modification, & deletion of individual words
- Ability to reposition text groups
- Pre-programmed quick orientation keys:
 - Right / Left
 - Prox / Mid / Distal
 - Long / Trans / Sagittal / Coronal
- (3) user programmable annotation libraries per preset [Factory and User]

Body Pattern Graphics

- 24 body pattern graphics
- Graphics organized by application type
- Default graphic customizable in user imaging presets
- Transducer location graphic with adjustable location and orientation

Arrows

- Available on live, frozen & archived images
- Tint of Arrow is selectable
- Different Arrow Styles are selectable
- Size of Arrow is selectable
- Up to 15 arrow graphics per image
- User controlled location & orientation

Safety and Regulatory

The z.one_{pro} Ultrasound system has been designed, manufactured, and tested to comply, at a minimum, with the following regulations internationally recognized standards:

- FDA CFR 21 Part 820 QSR
- EU MDD/CE marking (Class IIa)
- ISO 13485
- Health Canada CMDCAS/CSA
- Japan PAL
- IEC 60601-1: Medical Equipment safety
- IEC 60601-1-1: Safety Requirements for Medical Electrical
- IEC 60601-1-2: Electromagnetic compatibility
- IEC 60601-1-4: Programmable medical device
- IEC 60601-2-37: Particular requirements for the safety of ultrasonic medical diagnostic and monitor equipment
- CISPR 11: Industrial, Scientific and Medical (ISM) Radio-Frequency Equipment: Group 1, Class A
- NEMA UD2: Acoustic Output Measurement Standard for Diagnostic Ultrasound Equipment
- NEMA UD3: Standard for Real-Time Display of Thermal and Mechanical Acoustic Output Indices On Diagnostic Ultrasound Equipment
- IEC 61157: Requirement for the declaration of the acoustic output of medical diagnostic ultrasonic equipment
- JIS T 1501: General methods of measuring the performances of ultrasonic Pulse-echo diagnostic equipment

Caution: Federal law (USA) restricts this device to sale by or on the order of a physician and/or licensed veterinarian.
See the appropriate technical manual for detailed information regarding instructions for use, indications, warning and cautions.



420 N. Bernardo Avenue
Mountain View, CA 94043-1839

877-966-2731
650-230-2800

email: info@zonare.com
www.zonare.com