



- 1 Power
- 2 iStation (Patient management)
- 3 Setup
- 4 Report
- 5 Info (Input patient information)
- 6 Exam (Choose probe and exam)
- 7 Review
- 8 End Exam
- 9 Body Mark
- 10 Cine
- 11 Zoom
- 12 Save (Frame or cine)
- 13 Arrow & Comment
- 14 Back
- 15 Change
- 16 Measure
- 17 Caliper
- 18 Set
- 19 Multi-function Knob
- 20 Depth
- 21 iTouch (Gain & iTouch)
- 22 Image Mode & 2D/B Mode Select
- 23 Soft Keys

# M5

## Quick Reference Guide





## Quick Reference Guide

### Getting Started

#### New Patient

1. Press [Patient], fill in basic patient information.
2. Press [Exam].
3. Move [Trackball] to choose probe and exam mode.

### Scanning

#### B Mode

1. Press [B] to enter B mode.
2. Rotate [Gain & iTouch] knob to adjust gain.

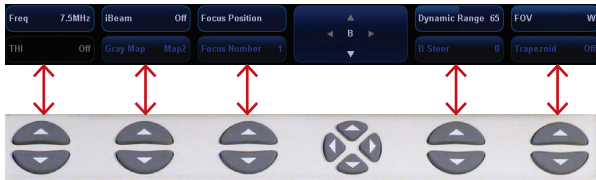
#### CDFI/Power Mode

1. Press [Color] to enter Color mode.
2. Move [Trackball] to change the position of ROI.
3. Press [Set], and then move [Trackball] to change the size of ROI, press [Set].

#### PW/CW Mode

1. Press [PW] to enter PW mode.
2. Move [Trackball] to change the position of sample volume.
3. Use related [Function Key] to change the size and angle of sample volume, press [Update] or [PW] to get the Pulse Wave Doppler.

#### Image Adjustment



The [Soft Key] is corresponding to the soft menu. Use left/right keys to switch the modes, use up/down keys to choose parameters and turn pages up or down.

**The parameters in B mode:** Frequency, iBeam, Focus Position, iClear, ExFOV, Line Density, Gray Map, Focus Number, Colorize, FOV, iTouch, Persistence, L/R Flip, Colorize Map, Dynamic Range, Acoustic Power, IP, U/D Flip, Magnify, FOV position.

**The parameters in Color mode:** Scale, Flow State, WF, Invert, Packet Size, Frequency, Priority, Baseline, Line Density, , Dual Live, Color IP, Map, B/C Wide, Focus Position, Acoustic Power.

#### Special Imaging Mode (Optional)

##### 3D/4D

1. Select the volume probe and choose the exam mode. Press [3D/4D] key on the control panel or click [3D/4D] in the soft menu of B mode to enter.
2. Move [Trackball] and press [Set] to adjust the ROI and curve VOI.
3. Press [Update] to enter the 4D image real-time status.

#### Free Xros M mode (Anatomical M mode)

1. Under B mode, click [Free Xros M] on the screen to enter.
2. Move [Trackball] to set the position of the sample line, and rotate [Multi-functional Knob] to change the angle of the sample line.

#### Tissue Doppler Imaging

1. Under B mode with phased array probe, click [TDI] on the screen to enter TDI mode.
2. Move [Trackball] to change the position and size of the ROI.
3. Press [M] to enter TVM mode; press [PW] to enter TVD mode; press [Power] to enter TEI mode.

### Measurement

1. Press [Freeze] to freeze the image before the measurement.
2. Press [Measure] to enter the application measurement status.
3. Move the cursor to choose the measurement tool, and then go to the desired position to measure.

### Post Scanning

#### Comments and Body Marks

##### Comment

1. Press [Comment] to choose the comment setting position and then add the comment to the image.

##### Body Mark

1. Press [Body Mark] and rotate it to choose the desired one.
2. Move [Trackball] to place the probe marker, and rotate the [Multi-functional Knob] to adjust the orientation of the probe.

#### Save Images or Cine

1. Press [Save] to save a single-frame image or cine to the system.
2. Press [Review] or select an exam of a patient in the [iStation] screen, and click [Review] to see the image of cine.

#### Report and Print

1. Press [Report], move the cursor to the comment text box and type the text.
2. Click [Image select] on the report page to add images, and then click [Print View] to preview the report, click [Print] to print the report out.

#### End Exam

Press [End Exam] to end one examination. You may start a new exam by repeating the instructions above.

### Image Management

#### Image Transfer

1. Press [iStation] to enter the image management system and choose the images.
2. Click [Send to] to send the images to USB, DICOM, etc.

**Note:** For detailed information, please refer to the operation manual.