

DC-88

Ultrasound System with X-Insight



Insight. Intelligence. Innovation.

Your priorities. Our mission.

In today's fast-paced and demanding healthcare environment, clinicians are challenged to identify high-risk patients efficiently, track disease progression quantifiably, and make informed decisions to optimize treatment efficacy throughout the care continuum. To address these evolving needs and support our vision of better healthcare for all, Mindray continues to develop innovative solutions that streamline workflow, and align with the financial goals of a broader range of institutions.

The DC-88 Ultrasound System with X-Insight focuses on clinician requirements, such as providing a more comprehensive and dedicated solution to ultrasound imaging and improving product usability to enhance diagnostic confidence. Based on an insightful look into customer needs, the DC-88 System is designed to deliver high efficiency and dynamic performance, with intelligent, precise, and clear imaging. Through innovative solutions like the DC-88 System, Mindray is committed to putting healthcare within reach.



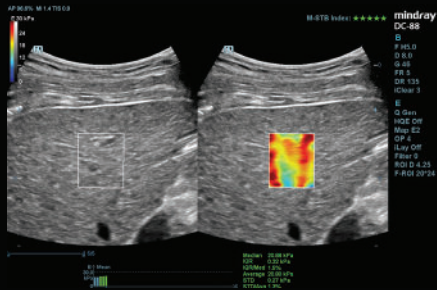
eXceptional Intelligence

High efficiency with precision imaging

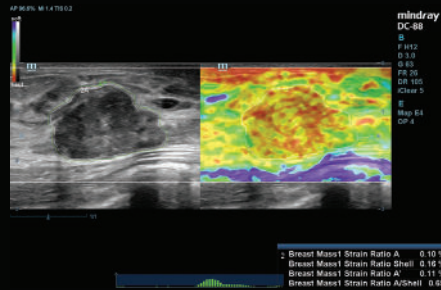
The DC-88 Ultrasound System delivers outstanding performance with advanced capabilities for addressing your diagnostic requirements across a wide range of applications. This System includes Sound Touch Elastography (STE), Ultra-Wideband Non-Linear (UWN⁺) contrast enhanced ultrasound (CEUS), complete quantitative tools for vascular perfusion analysis, and Artificial Intelligence (AI) tools such as Smart Plane CNS.



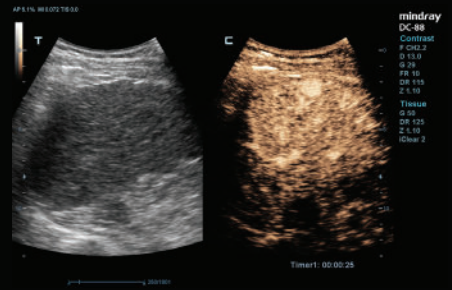
General Imaging Solutions



Sound Touch Elastography

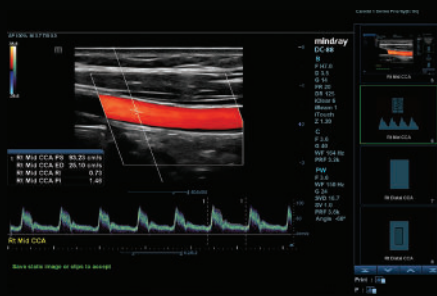


Natural Touch Elastography

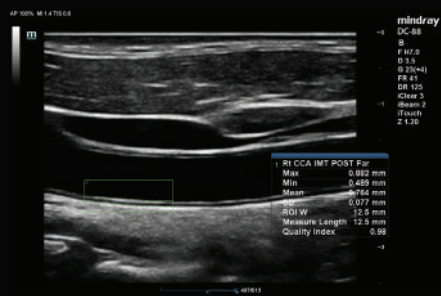


UWN+ CEUS

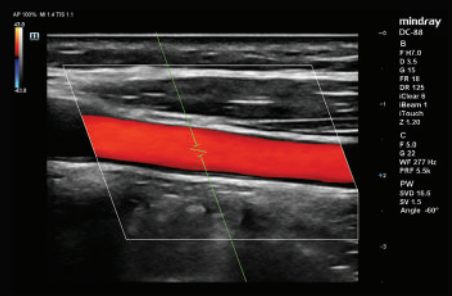
Vascular Solutions



iWorks™ Protocols

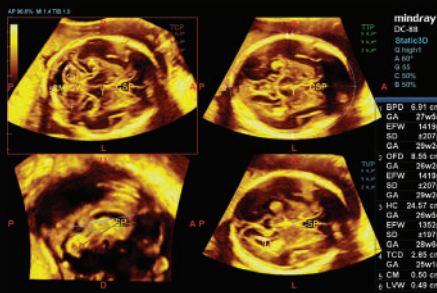


Auto IMT

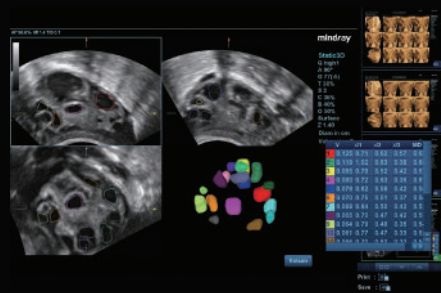


Smart Track

Women's Health Solutions



Smart Planes CNS



Smart FLC



Smart Face

eXceeding Expectations

Innovation inspired by evolving clinical needs

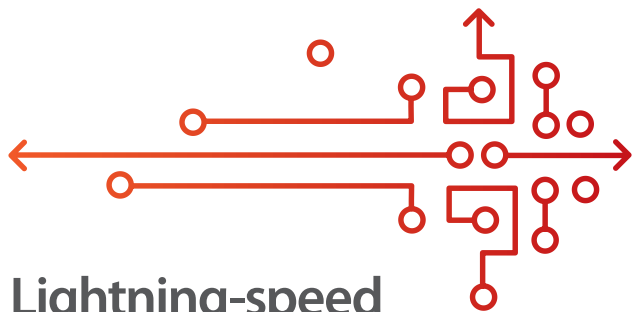
The DC-88 with X-Insight focuses on what matters to you and refines your user experience by providing clarity, flexibility, and intuitive technologies that exceed your expectations.

Designed to maximize clinician productivity and enhance user experience

- 1 21.5" standard LED monitor provides superior contrast resolution and improved visualization
- 2 Unique dual-wing floating arm maximizes viewing capabilities with advanced articulation
- 3 Ultra-slim multi-gesture touchscreen for exceptional usability and utility
- 4 Built-in battery for up to 75 minutes of continuous scanning and increased portability options
- 5 Five active transducer ports to maximize workflow

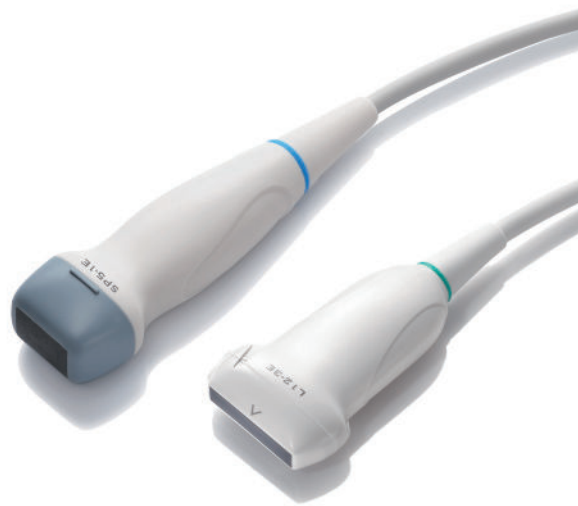


eXpress Clarity



Lightning-speed imaging powered by X-Engine

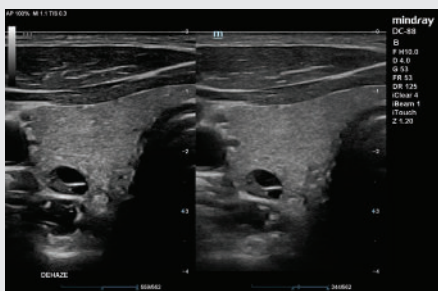
The new X-Engine integrated with both GPU and CPU enables multi-core parallel processing for fast frame rates and superb clarity.



Touch and Go with leading-edge transducers

Single Crystal, 3T™, and ComboWave technologies combine to enable better penetration, higher resolution, and increased image uniformity.

Superb visualization by innovative image algorithms



Dehaze

Proprietary technology that suppresses noise and reduces interference with no loss of diagnostic information.



iLive with Hyaline

New rendering method that dynamically applies transparency to rendered structures for a more comprehensive view of anatomy.



Echo Boost™

Better contrast and homogeneity for visualization of myocardial tissue layers.



Mindray Global Headquarters
Shenzhen, China



Mindray North America Headquarters
Mahwah, New Jersey



Mindray Innovation Center
San Jose, California

Mindray North America

800 MacArthur Blvd., Mahwah, NJ 07430

Tel: 800.288.2121 Support: 877.913.9663 Fax: 800.926.4275 www.mindray.com

Mindray® is a registered trademark of Shenzhen Mindray Bio-Medical Electronics Co., Ltd. All brands and product names are trademarks of their respective owners. ©2020 Mindray DS USA, Inc. Subject to change. 10/20 P/N: 0002-08-40442 Rev A

mindray

healthcare within reach