

# Accessories Catalog



**mindray**

## Welcome to the Mindray North America Parts and Accessories Catalog

This catalog will provide you with the parts and accessories that connect to your Mindray Anesthesia Delivery System, Bedside Monitors, or Distributed Monitoring System. Every Mindray product is built with patients and clinicians in mind, to ensure they are user and patient-friendly. Our parts and accessories follow this approach too so that you can expect exceptional service, focus, and quality when relying on them to deliver patient care.

### About Mindray

Mindray is a leading global developer, manufacturer, and supplier of medical devices whose mission is to advance medical technologies to make healthcare more accessible by delivering high-quality, richly featured medical products. Mindray provides solutions in three core businesses: Patient Monitoring and Life Support, Medical Imaging, and In-Vitro Diagnostics. With corporate headquarters located in Shenzhen, China, and 40 international subsidiaries around the globe, Mindray has approximately 10,000 employees worldwide. Eight global R&D centers and an industry leading investment of 10% of annual revenue into research and development further demonstrate Mindray's commitment to innovation and advancing technology in a global market. Today, Mindray products and services can be found in healthcare facilities in over 190 countries and regions.

### Exceptional Service and Support

Clinical education specialists provide your staff with comprehensive, on-site product training and in-service. Our dedicated field service CARE Team and in-house technical support organization represent one of the largest direct service teams in the industry.

### Finding the Right Part

This catalog is designed to make finding the right part easy. Chapters are organized by specific product categories. Simply locate the type of part you are looking for under the appropriate category. Not sure which part works with which product? No problem. Each accessory is clearly marked for its corresponding medical device.

### How to Order

We have made placing orders for parts and accessories easy. You can shop online or contact our customer service department. To shop online 24 hours a day, 7 days a week, log on to: <http://store.na.mindray.com>  
Our online store is available only to US customers.

You can also contact our customer service department at 1-800-288-2121 (Press 3) Monday – Friday, 8:30 am - 6:00 pm EST, or email [customerservice@mindray.com](mailto:customerservice@mindray.com).

**Buy your accessories from a company you can trust, that offers service you can depend on, and provides the support you expect.**

NOTE: This catalog is not an Operating Instructions Manual. This catalog will assist you in identifying the correct parts and accessories to connect to your Mindray anesthesia delivery system, bedside monitor, or Central Station. For Operating Instructions, please refer to the Operating Instructions Manual. Warnings, Precautions, and Notes can also be found in the Operating Instructions.

Anesthesia	
AGSS .....	1
Breathing Systems .....	2
Airway Adapters .....	3
Battery .....	3
Breathing System .....	3
O <sub>2</sub> Canisters .....	4
Flow Sensor .....	5
Gas Cylinders .....	6
Gas Sampling Lines .....	6
Hoses .....	7
Mounts .....	10
Networking USB Storage .....	13
O <sub>2</sub> Sensor .....	14
Reference Cards .....	14
Vaporizers .....	15
Water Traps .....	17
Batteries .....	18
BeneLink Cables .....	21
Cardiac Output Cables .....	23
CO <sub>2</sub>	
Airway Adapters .....	24
Cannulas .....	24
Sampling Lines .....	25
Water Traps .....	25
Data Storage .....	26
ECG	
Cables .....	27
ESIS Cables .....	28
Neonate Cables .....	29
Cable Adapters .....	30
Electrodes .....	30
Lead Wires – 3 Lead Pinch .....	30
Lead Wires – 3 Lead Snap .....	32
Lead Wires – 5 Lead Pinch .....	33
Lead Wires – 5 Lead Snap .....	34
Lead Wires – 6 Lead .....	36
Lead Wires – 12 Lead .....	36
Single Patient Use Lead Wires .....	37
EEG .....	38
ICP .....	39
Invasive Blood Pressure	
IBP Cables .....	40
iView .....	42
Miscellaneous Accessories .....	43
Miscellaneous Cables	
Communication Cables .....	45
Defib Cables .....	45
Docking Station Cables .....	45
Ethernet (CS1) Cables .....	46
Gas Module Cables .....	47
Grounding Cable .....	47
IABP Cables .....	47
Nurse Call Cables .....	48
Power Cords .....	48
Serial Port Cables .....	48
SMR Cables .....	49
USB Cables .....	49
Video Cables .....	49
Mounts	
Bedrail Mounts .....	51
Miscellaneous Mounts .....	52
Mounting Brackets and Plates .....	53
Remote Display (RD1) Mounts and Displays .....	54
SMR Mounts .....	55
Wall Mounts .....	55
Non-Invasive Blood Pressure	
Neonate Blood Pressure Cuffs .....	59
NIBP Hoses .....	60
Reusable Blood Pressure Cuffs .....	61
Single Patient Use Blood Pressure Cuffs .....	62
NMT Accessories .....	64
Paper .....	65
Pulse Oximetry	
DPM SpO <sub>2</sub> .....	66
Masimo SET® .....	68
Nellcor™ .....	73
Nonin .....	73
Rolling Stands .....	75
Rolling Stand Parts	
rSO <sub>2</sub> .....	76
ScVO <sub>2</sub> .....	79
Temperature	
Disposable Mindray Temperature Probes .....	78
Disposable Temperature Probes – 400 Series .....	78
Reusable Mindray Temperature Probes .....	79
Reusable 400 Series Temperature Probes .....	81
SmarTemp Probes .....	82
Welch Allyn® SureTemp® Plus	
Thermometer Module and Accessories .....	83

*Scavenging AGSS Accessories*



**Waste Gas Scavenger Assembly**

115-023175-00

Waste Gas Scavenger Assembly

Compatible with A3, A4, A5, A7



**AGSS Transfer Tube**

801-0631-00074-00

AGSS Transfer Tube

Compatible with A3, A4, A5, A7



**Waste Gas Hose for Gas Module to Quick Release Fitting**

115-052160-00

Waste Gas Hose for Gas module to Quick Release Fitting

Compatible with A3, A4, A5



**Sample Gas Hose for Gas Module to Quick Release Fitting 1.2'**

115-052161-00

Waste Gas Hose for Gas Module to Quick Release Fitting

Compatible with A7, A8, A9



**Sample Gas Hose for Gas Module to Quick Release Fitting**

115-052370-00

Waste Gas Hose for Gas Module to Quick Release Fitting

Compatible with A7, A8, A9

**Passive Scavenging Kit**

115-037548-00

Passive Scavenging Kit

Compatible with A-Series



**AGSS 3 Way Connector Assembly (ACGO)**

115-026796-00

AGSS 3 Way Connector Assembly

Compatible with A3, A4, A5, A7






---

**AGSS 3 Way Connector Assembly (for AG module)**

115-052162-00

AGSS 3 Way Connector Assembly for AG Module

Compatible with A7, A8, A9

*Breathing System*


---

**Bellows Dome**

801-0631-00054-00

Bellows Dome, A-Series

Compatible with A3, A4, A5, A7




---

**Bellows Assembly**

0601-30-78968

Bellows Assembly, A-Series

Compatible with A3, A4, A5, A7




---

**Insp/Exp Connector**

801-0631-00057-00

Insp/Exp Connector, A-Series

Compatible with A-Series




---

**Insp/Exp Connector Rotary Cap**

801-0631-00059-00

Insp/Exp Connector Rotary Cap, A-Series

Compatible with A-Series




---

**Water Collection Cup**

801-0631-00058-00

Water Collection Cup, A-Series

Compatible with A-Series

---

**Dynamic Gas Scavenging System (DGSS)**

082-002748-00

Dynamic Gas Scavenging System (DGSS)

Compatible with A3, A4, A5, A7

*Airway Adapters*



**Dryline™ Airway Adapter – Elbow**

115-043021-00

Dryline airway adapter, elbow, box of 10

Compatible with A-Series, ePM 10M, ePM 12M, N12, N15, N17, N19, N22



**Dryline™ Airway Adapter – Straight**

115-043020-00

Dryline airway adapter, straight, box of 10

Compatible with A-Series, ePM 10M, ePM 12M, N12, N15, N17, N19, N22

*Battery*



**Lithium-ion Battery**

115-018012-00

Lithium-ion Battery, 11.1V

Compatible with A3, A4, A5, A7

*Breathing System*



**Check Valve Dome**

801-0631-00061-00

Check valve dome, A-Series

Compatible with A3, A4, A5, A7



**Check Valve**

801-0631-00104-00

Check valve, A-Series

Compatible with A-Series



**Check Valve Cover**

043-009522-00

Check valve cover

Compatible with A8, A9

**Bag Arm - Fixed Height**

115-048600-00

Bag Arm - Fixed Height, A-Series

Compatible with A-Series

**Bag Arm - Flexible**

115-048035-00

Bag Arm - Flexible Height, A-Series

Compatible with A-Series

**Airway Pressure Gauge**

115-051819-00

Airway pressure gauge, A-Series

Compatible with A3, A4, A5, A7

**O<sub>2</sub> Port Cover Kit**

115-016612-00

O<sub>2</sub> Port Cover Kit

Compatible with A3, A4, A5, A7

**O<sub>2</sub> Canisters****CO<sub>2</sub> Absorbent Canister**

801-0631-00066-00

CO<sub>2</sub> Absorbent Canister, A-Series

Compatible with A3, A4, A5, A7

**CO<sub>2</sub> Bypass Assembly**

115-036378-00

CO<sub>2</sub> Bypass Assembly, A-Series

Compatible with A3, A4, A5, A7



**CO<sub>2</sub> Absorber Hose** 801-0631-00092-00

CO<sub>2</sub> Absorber Hose, A-Series

Compatible with A3, A4, A5, A7



**CO<sub>2</sub> Absorber Base with Drain Valve** 801-0631-00100-00

CO<sub>2</sub> Absorber Base with Drain Valve, A-Series

Compatible with A3, A4, A5, A7



**CO<sub>2</sub> Absorbent Canister - Pre-Pak** 0683-00-0326-12

CO<sub>2</sub> Absorbent, Pre-Pak (12)

Compatible with A-Series



**Sodalime Absorber Canister** 115-066854-00

Absorbent Canister, A8/A9

Compatible with A8, A9



**Bypass Assembly** 115-066853-00

Bypass Assembly, A8/A9

Compatible with A8, A9

*Flow Sensor*



**Expiratory Flow Sensor Assembly** 801-0631-00056-00

Expiratory Flow Sensor Assembly

Compatible with A3, A4, A5, A7



**Inspiratory Flow Sensor Assembly** 801-0631-00060-00

Inspiratory Flow Sensor Assembly

Compatible with A3, A4, A5, A7




---

**Expiratory Flow Sensor Assembly**

115-04508-00

Expiratory Flow Sensor Assembly

Compatible with A8, A9




---

**Inspiratory Flow Sensor Assembly**

115-04507-00

Inspiratory Flow Sensor Assembly

Compatible with A8, A9

### Gas Cylinders




---

**Washer, Seal for Cylinder**

0348-00-0185

Washer, Seal for Cylinder

Compatible with A-Series




---

**Gas Cylinder Wrench**

115-033063-00

Gas Cylinder Wrench

Compatible with A-Series

### Gas Sampling Lines




---

**Sampling Line – Adult**

115-043017-00

Sampling line, Adult, 8.2' (2.5 m), box of 25

Compatible with A-Series




---

**Sampling Line – Neonate**

115-043018-00

Sampling line, Neonatal, 8.2' (2.5 m), box of 25

Compatible with A-Series

*Hoses*



**Air Hose - Chemetron**

0004-00-0079-12

Air Gas Supply Hose 15' Chemetron

Compatible with A-Series



**Air Hose - DISS Female**

0004-00-0079-14

Air Gas Supply Hose 15' Diss Female

Compatible with A-Series



**Air Hose - Ohmeda**

0004-00-0079-11

Air Gas Supply Hose 15' Ohmeda

Compatible with A-Series



**Air Hose - Puritan Bennett**

0004-00-0079-13

Air Gas Supply Hose 15' Puritan Bennett

Compatible with A-Series



**EVAC Hose - Chemetron**

0004-00-0081-12

EVAC Gas Supply Hose 15' Chemetron

Compatible with A-Series



**EVAC Hose - DISS Female**

0004-00-0081-14

EVAC Gas Supply Hose 15' Diss Female

Compatible with A-Series



**EVAC Hose - Ohmeda**

0004-00-0081-11

EVAC Gas Supply Hose 15' Ohmeda

Compatible with A-Series

**EVAC Hose - Puritan Bennett**

0004-00-0081-13

EVAC Gas Supply Hose 15' Puritan Bennett

Compatible with A-Series

**EVAC/VAC Hose - Chemetron**

0004-00-0081-32

EVAC DISS to VAC Gas Supply Hose 15' Chemetron

Compatible with A-Series

**EVAC/VAC Hose - DISS Female**

0004-00-0081-34

EVAC DISS to VAC Gas Supply Hose 15' Diss Female

Compatible with A-Series

**EVAC/VAC Hose - Ohmeda**

0004-00-0081-31

EVAC DISS to VAC Gas Supply Hose 15' Ohmeda

Compatible with A-Series

**EVAC/VAC Hose - Puritan Bennett**

0004-00-0081-33

EVAC DISS to VAC Gas Supply Hose 15' Puritan Bennett

Compatible with A-Series

**N<sub>2</sub>O Hose - Chemetron**

0004-00-0078-12

N<sub>2</sub>O Gas Supply Hose 15' Chemetron

Compatible with A-Series

**N<sub>2</sub>O Hose - DISS Female**

0004-00-0078-14

N<sub>2</sub>O Gas Supply Hose 15' Diss Female

Compatible with A-Series





**N<sub>2</sub>O Hose - Ohmeda**

0004-00-0078-11

N<sub>2</sub>O Gas Supply Hose 15' Ohmeda

Compatible with A-Series



**N<sub>2</sub>O Hose - Puritan Bennett**

0004-00-0078-13

N<sub>2</sub>O Gas Supply Hose 15' Puritan Bennett

Compatible with A-Series



**O<sub>2</sub> Hose - Chemetron**

0004-00-0077-12

O<sub>2</sub> Gas Supply Hose 15' Chemetron

Compatible with A-Series



**O<sub>2</sub> Hose - DISS Female**

0004-00-0077-14

O<sub>2</sub> Gas Supply Hose 15' Diss Female

Compatible with A-Series



**O<sub>2</sub> Hose - Ohmeda**

0004-00-0077-11

O<sub>2</sub> Gas Supply Hose 15' Ohmeda

Compatible with A-Series



**O<sub>2</sub> Hose - Puritan Bennett**

0004-00-0077-13

O<sub>2</sub> Gas Supply Hose 15' Puritan Bennett

Compatible with A-Series



**VAC Hose - Chemetron**

0004-00-0080-14

VAC Gas Supply Hose 15' Chemetron

Compatible with A-Series





**VAC Hose - DISS Female**

0004-00-0080-16

VAC Gas Supply Hose 15' Diss Female

Compatible with A-Series



**VAC Hose - Ohmeda**

0004-00-0080-13

VAC Gas Supply Hose 15' Ohmeda

Compatible with A-Series



**VAC Hose - Puritan Bennett**

0004-00-0080-15

VAC Gas Supply Hose 15' Puritan Bennett

Compatible with A-Series

*Mounts*



**Monitor Mounting Arm, Pivot, 12"**

0436-00-0169

Monitor Mounting Arm, Pivot, 12"; used with compatible mounting plate to mount the monitor to the A-Series

Compatible with A-Series, DPM 6, Passport 12, Passport 12m, ePM 12M

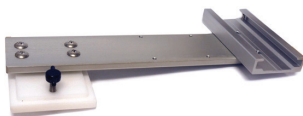


**Monitor Mounting Arm, Pivot, 16"**

0436-00-0198

Monitor Mounting Arm, Pivot, 16" ; used with compatible mounting plate to mount the monitor to the A-Series

Compatible with A-Series, DPM 6, DPM 7, Passport 12, Passport 12m, Passport 17m, ePM 12M



**Mount, Suction Canister**

0436-00-0259

Mount, Suction Canister

Compatible with A-Series



**Mounting Arm, Suction Regulator**

0436-00-0207

Mounting Arm, Suction Regulator

Compatible with A-Series



<p><b>Regulator, Patient Suction</b></p> <p>Regulator, Patient Suction</p> <p>Compatible with A-Series</p>	0992-00-0256
<p><b>Articulating Arm with Tray, 12" x 12"</b></p> <p>Articulating Arm with Tray 12" x 12"</p> <p>Compatible with A-Series</p>	034-000460-00
<p><b>Top Mounting Kit, Passport 17m</b></p> <p>Mounts patient monitor to top of A-Series</p> <p>Compatible with A-Series, DPM 7, Passport 17m</p>	115-004003-00
<p><b>Top Mounting Kit, Passport 12m</b></p> <p>Mounts patient monitor to top of A-Series</p> <p>Compatible with A-Series, DPM 6, Passport 12m</p>	115-004004-00
<p><b>CPU Mount 1.5" - 3" / 3.8 - 7.6 cm wide</b></p> <p>Mounts CPU to side of the A-Series</p> <p>Compatible with A-Series</p>	008-000468-01
<p><b>CPU Mount 3" - 4.5" / 7.6 - 11.4 cm wide</b></p> <p>Mounts CPU to side of the A-Series</p> <p>Compatible with A-Series</p>	008-000468-00
<p><b>Spring Hook</b></p> <p>Hook supports additional storage of various accessories</p> <p>Compatible with A-Series</p>	115-021015-00

---

**AIMS Mounting Arm** 034-000288-00

Mounting arm to support AIMS / EMR display

Compatible with A-Series

---

**Top Shelf Mounting Kit** 115-070794-00

Mounts patient monitor to top of A-Series

Compatible with A-Series, N15, N17, ePM 15M

---

**Top Shelf Mounting Kit** 115-074073-00

Mounts patient monitor to top of A-Series

Compatible with A-Series, N12, ePM 12M



---

**Hook** 043-010620-00

Hook supports additional storage of various accessories

Compatible with A8, A9

---

**Variable Mount Bracket A8/A9** 115-066029-00

Variable Mount Bracket

Compatible with N12, N15, N17

---

**Fixed Mount Bracket A8/A9** 115-066074-00

Fixed Mount Bracket

Compatible with N12, N15, N17

---

**Fixed Mount Bracket A8/A9** 115-069443-00

A8/A9 Fixed Mount Bracket

Compatible with N19, N22

---

**Top Shelf Upgrade Kit** 115-069445-00

A8/A9 Mount Top Shelf Upgrade Kit

---

**Bracket Kit for A-Series Mounts** 115-070794-00

Fixed Bracket Kit

Compatible with N15, N17

---

**Bracket Kit for A-Series Mounts** 115-074073-00

Fixed Bracket Kit

Compatible with N12

*Networking and USB Storage*




---

**CAT 5 Ethernet Cable, Patch, STP, 6'** 0012-00-1274-06

CAT 5 Ethernet Cable, Patch, STP, 6' (1.83m)

Compatible with A-Series




---

**CAT 5 Ethernet Cable, Crossover, STP, 6'** 0012-00-1392-06

CAT 5 Ethernet Cable, Crossover, STP, 6' (1.83m)

Compatible with A-Series




---

**USB Flash Drive 8 GB** 023-001673-00

USB Flash Drive 8 GB

Compatible with A-Series, Passport 12m, Passport 17m, VS9

---

**USB Wired Mouse** 023-000361-00

USB Wired Mouse

*O<sub>2</sub> Sensors*



**O<sub>2</sub> Sensor**

040-001270-00

O<sub>2</sub> Sensor, A-Series

Compatible with A-Series



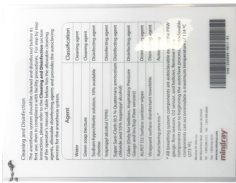
**O<sub>2</sub> Sensor Cable and Housing**

801-0631-00102-00

O<sub>2</sub> Sensor Cable and Housing

Compatible with A3, A4, A5, A7

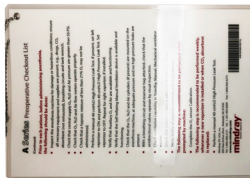
*Reference Cards*



**Disinfection/Cleaning Quick Reference Card**

115-040734-00

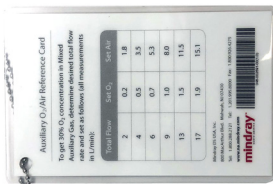
Compatible with A3, A4, A5, A7



**A-Series Pre-Operation Checklist Card**

801-0631-00081-00

Compatible with A3, A4, A5, A7



**A-Series Auxiliary O<sub>2</sub>/Air Reference Card**

801-0631-00082-00

Compatible with A3, A4, A5, A7

*Vaporizers*




---

**Dräger Vapor 2000 Isoflurane Bottle Adapter** 0004-00-0101

Isoflurane Dräger Fill Bottle Adapter

Compatible with A3, A4, A5, A7, A8




---

**Dräger Vapor 2000 Isoflurane Vaporizer** 0992-00-0149

Dräger Vapor 2000 Isoflurane Vaporizer with Dräger Fill Adapter

Compatible with A3, A4, A5, A7, A8




---

**Dräger Vapor 2000 Sevoflurane Bottle Adapter** 0004-00-0100

Sevoflurane Dräger Fill Bottle Adapter

Compatible with A3, A4, A5, A7, A8




---

**Dräger Vapor 2000 Sevoflurane Vaporizer** 0992-00-0148

Dräger Vapor Sevoflurane Vaporizer with Dräger Fill Adapter

Compatible with A3, A4, A5, A7, A8




---

**Dräger D-Vapor Desflurane Vaporizer** 040-001997-00

Dräger D-Vapor Desflurane Vaporizer

Compatible with A3, A4, A5, A7, A8




---

**V60 Sevoflurane Vaporizer** 115-025532-00

V60 Sevoflurane Vaporizer with Quick-Fil Adapter

Compatible with A3, A4, A5, A7, A8




---

**V60 Quik-Fil Sevoflurane Bottle Adapter** 115-026747-00

Sevoflurane Quik-Fill Bottle Adapter

Compatible with A3, A4, A5, A7, A8




---

**V60 Quik-Fil Drainage Funnel for Sevoflurane Vaporizer**

040-000067-00

Sevoflurane Drainage Funell for V60 Sevoflurane

Compatible with A3, A4, A5, A7, A8




---

**V60 Isoflurane Vaporizer**

115-025535-00

V60 Isoflurane Vaporizer with Key Filler

Compatible with A3, A4, A5, A7, A8




---

**V60 Key Filler Filling Adapter for Isoflurane Bottle Adapter**

040-002707-00

Isoflurane Key Filler Bottle Adapter

Compatible with A3, A4, A5, A7, A8

### A9 Vaporizers




---

**Sevoflurane Vaporizer Safety Filling Adapter**

115-066756-00

Sevoflurane electronic vaporizer material package

Compatible with A9




---

**Isoflurane Vaporizer with Safety Filling Adapter**

115-066758-00

Isoflurane electronic vaporizer material package

Compatible with A9




---

**Desflurane Vaporizer (Saf-T-Fil)**

115-066759-00

Desflurane electronic vaporizer material package

Compatible with A9

---

**Sevoflurane Safety Filling Adapter**

115-064146-00

Sevoflurane safety filling adapter

Compatible with A9

---

**Isoflurane Safety Filling Adapter** 115-064147-00

Isoflurane safety filling adapter

Compatible with A9

*Water Traps*




---

**Dryline™ Water Trap – Adult/Pediatric** 125-000005-00

Dryline water trap, Adult/Pediatric, box of 10

Compatible with 3-slot AGM




---

**Dryline™ Water Trap – Neonate** 125-000006-00

Dryline water trap, Neonatal, box of 10

Compatible with 3-slot AGM




---

**Dryline™ II Water Trap – Adult/Pediatric** 115-058733-00

Dryline water trap, Adult/Pediatric, box of 10

Compatible with 2-slot AGM




---

**Dryline™ II Water Trap – Neonate** 115-058734-00

Dryline water trap, Neonatal, box of 10

Compatible with 2-slot AGM



When the patient monitor is not connected to an electrical power source, you can rely on batteries for all Mindray DS USA monitors. Lithium Ion batteries offer improved performance in terms of battery runtime and recharge time.



**Lithium Ion Battery**

115-018012-00

Lithium Ion Battery for the Mindray monitors, 11.1V

Compatible with DPM 6, DPM 7 (requires 2 batteries), Passport 8, Passport 12, Passport 12m, Passport 17m, A3, A4, A5, A7



**Lithium Ion Battery**

115-082460-00

Lithium Ion Battery for Accutorr Vital Signs

Compatible with Accutorr 3, Accutorr 7



**Lithium Ion Battery**

115-034132-00

Lithium Ion Battery

Compatible with N19, N22, VS9



**Lithium Ion Battery**

115-065140-00

Lithium Ion Battery for ePM Series

Compatible with ePM10M, ePM12M, N12, N15, N17



**T1 Lithium Ion Battery**

115-018016-00

Lithium Ion Battery, 7.4V

Compatible with T1



**T1 Lithium Ion Batteries**

121-001220-00

Two Lithium Ion Batteries

Compatible with T1



**Telepack Batteries**

0146-00-0077-01

Batteries (Alkaline, size AA)

Compatible with Panorama Telepack, TD60, TM70, TM80



**Universal Lithium Ion Battery**

115-018011-00

Universal Lithium Ion Battery, 11.1V

Compatible with Accutorr Plus, Accutorr V, DPM 3, DPM 4, DPM 5, Trio, Passport 2, Passport V, Spectrum, Spectrum OR



**V-Series Battery**

115-018013-00

Lithium Ion Battery for V12 and V21 patient monitors

Compatible with V12, V21



**BeneVision Telemetry Rechargeable Battery Pack**

115-030107-00

BeneVision TD60/TM70/TD80 Rechargeable Lithium-Ion Battery Pack

Compatible with TD60, TM70, TM80

**BeneVision Central Charger**

115-030108-00

BeneVision Central Charger charges up to 10 Lithium-Ion Battery Packs simultaneously

Compatible with TD60, TM80, TM70, and BP10 batteries

---

**GCX Mount for BeneVision Central Charger**

115-030109-00

GCX Mount for BeneVision Central Charger

Compatible with BeneVision Central Charger

---

**BP10 Li-ion Battery**

115-035534-00

BP10 Li-ion battery package

Compatible with BP10



---

**2 AA Battery Holder**

115-030105-00

Battery Holder for 2AA Batteries (batteries not included), 3/box

Compatible with TD60



---

**3 AA Battery Holder**

115-030106-00

Battery Holder for 3 AA Batteries (batteries not included), 3/box

Compatible with TD60, TM70, TM80



**Type A Serial Port Cable**

009-001767-00

Type A serial port adapter cable / male to female

Compatible with Passport 12m, Passport, 17m, N12, N15, N17, N19, N22



**Type B Serial Port Cable**

009-001768-00

Type B serial port adapter cable / male to male

Compatible with Passport 12m, Passport 17m, N12, N15, N17, N19, N22



**Type C Serial Port Cable**

009-001769-00

Type C serial port adapter cable / male to male

Compatible with Passport 12m, Passport 17m, N12, N15, N17, N19, N22



**Type D Serial Port Cable**

009-002943-00

Type D serial port adapter cable / 9-pin to 15-pin

Compatible with Passport 12m, Passport 17m, N12, N15, N17, N19, N22



**Type E Serial Port Cable**

009-004613-00

Type E serial port adapter cable / 9-pin to RJ45 connector

Compatible with Passport 12m, Passport 17m, N12, N15, N17, N19, N22



**Type F Serial Port Cable**

009-008485-00

Type F serial port adapter cable

Compatible with N12, N15, N17, N19, N22

**Type G Serial Port Cable**

009-008624-00

Type G serial port adapter cable

Compatible with N12, N15, N17, N19, N22

---

**Benelink ID Adapter**

115-007277-00

Benelink ID Adapter

Compatible with N12, N15, N17, N19, N22

---

**RJ45 Connecting Cable**

009-001770-00

Benelink ID Adapter

Compatible with N12, N15, N17, N19, N22

*Cardiac Output Cables*



**Cardiac Output Y Cable**

0012-00-1447-01

Cable, Cardiac Output Y, two Temperature connections

Compatible with Spectrum, Spectrum OR, V12, V21



**Cardiac Output Y Cable, 12 Pin**

0010-30-42743

Cable, Cardiac Output Y, two Temperature connections

Compatible with DPM 6, DPM 7, Passport 8, Passport 12, Passport 12m, Passport 17m, N12, N15, N17, N19, N22



**Edwards Lifesciences Bath Probe Adapter**

0012-00-1519

Cable, Cardiac Output Edwards Lifesciences Bath probe adapter

Compatible with Spectrum, Spectrum OR, V12, V21, Passport 8, Passport 12, Passport 12m, Passport 17m, DPM 6, DPM 7, N12, N15, N17, N19, N22



**Edwards Lifesciences In-line Injectate Adapter**

0012-00-1520

Cable, Cardiac Output Edwards Lifesciences in-line injectate adapter

Compatible with Spectrum, Spectrum OR, V12, V21, DPM 6, DPM 7, Passport 8, Passport 12, Passport 12m, Passport 17m, N12, N15, N17, N19, N22



**In-line Injection Temperature Sensor, BD, Reusable**

6000-10-02079

In-line injection temperature sensor, BD, reusable

Compatible with N12, N15, N17, N19, N22



**In-line Injection Temperature Sensor Housing, BD, Disposable**

6000-10-02080

In-line injection temperature sensor housing, BD, disposable (pkg of 25)

Compatible with N12, N15, N17, N19, N22

**Adapters****Dryline™ Airway Adapter – Elbow**

115-043021-00

Dryline airway adapter, elbow, box of 10

Compatible with DPM 4, DPM 5, DPM 6, DPM 7, Passport V, Passport 12, Passport 12m, Passport 17m, T1, N1, N12, N15, N17, N19, N22, ePM 12M

**Dryline™ Airway Adapter – Straight**

115-043020-00

Dryline airway adapter, straight, box of 10

Compatible with DPM 4, DPM 5, DPM 6, DPM 7, Passport V, Passport 12, Passport 12m, Passport 17m, T1, N1, N12, N15, N17, N19, N22, ePM 12M

**Mindray Low Flow Sidestream CO<sub>2</sub> Adapter**

045-003134-00

Low flow sidestream adapter connects the Accutorr 7 and N1 to Covidien Microstream filterlines

Compatible with Accutorr 7, N1

**Cannulas****Nasal Cannula – Adult**

115-043001-00

CO<sub>2</sub> Nasal sample cannula, Adult with 7' line, box of 25

Compatible with DPM 4, DPM 5, DPM 6, DPM 7, Passport V, Passport 8, Passport 12m, Passport 17m, T1, ePM 10M, ePM 12M, N1, N12, N15, N17, N19, N22

**Nasal Cannula – Pediatric**

115-043002-00

CO<sub>2</sub> Nasal sample cannula, Pediatric with 7' line, box of 25

Compatible with DPM 4, DPM 5, DPM 6, DPM 7, Passport V, Passport 8, Passport 12, Passport 12m, Passport 17m, T1, ePM 12M, N1, N12, N15, N17, N19, N22

**Nasal Cannula – Infant**

115-043003-00

CO<sub>2</sub> Nasal sample cannula, Infant with 7' line, box of 25

Compatible with DPM 4, DPM 5, DPM 6, DPM 7, Passport V, Passport 8, Passport 12, Passport 12m, Passport 17m, T1, ePM 12M, N1, N12, N15, N17, N19, N22



**Nasal Cannula – CO<sub>2</sub>/O<sub>2</sub>** 0683-00-0452-25

Nasal Cannula, CO<sub>2</sub>/O<sub>2</sub>, 7' (2.1 m), box of 25

Compatible with Passport V, Gas Module 3

**Sampling Lines**



**Sampling Line – Adult** 115-043017-00

Sampling line, Adult, 8.2' (2.5 m), box of 25

Compatible with DPM 4, DPM 5, DPM 6, DPM 7, Passport V, Passport 12, Passport 12m, Passport 17m, T1, ePM 10m, ePM 12m, N1, N12, N15, N17, N19, N22



**Sampling Line – Neonate** 115-043018-00

Sampling line, Neonatal, 8.2' (2.5 m), box of 25

Compatible with DPM 4, DPM 5, DPM 6, DPM 7, Passport V, Passport 12, Passport 12m, Passport 17m, T1, ePM 10m, ePM 12m, N1, N12, N15, N17, N19, N22

**Water Traps**



**Dryline™ Water Trap – Adult/Pediatric** 125-000005-00

Dryline water trap, Adult/Pediatric, box of 10

Compatible with DPM 4, DPM 5, DPM 6, DPM 7, Passport V, Passport 8, Passport 12, Passport 12m, Passport 17m, T1, N12, N15, N17, N19, N22



**Dryline™ II Water Trap, Single Slot (1x) – Adult/Pediatric** 115-058733-00

Dryline water trap used with the 1x Sidestream CO<sub>2</sub> module, Adult/Pediatric, box of 10

Compatible with Passport 8, Passport 12, Passport 12m, Passport 17m, T1, ePM 10m, ePM 12m, N1, N12, N15, N17, N19, N2



**Dryline™ Water Trap – Neonate** 125-000006-00

Dryline water trap, Neonatal, box of 10

Compatible with DPM 4, DPM 5, DPM 6, DPM 7, Passport V, Passport 8, Passport 12, Passport 12m, Passport 17m, T1



**Dryline™ II Water Trap, Single Slot (1x) – Neonate** 115-058734-00

Dryline water trap used with the 1x Sidestream CO<sub>2</sub> module, Neonatal, box of 10

Compatible with Passport 8, Passport 12, Passport 12m, Passport 17m, T1, ePM 10m, ePM 12m, N1, N12, N15, N17, N19, N22



*Data Storage Cards*




---

**CF storage card (4GB)**

023-000846-00

CF storage card (4GB)

Compatible with DPM 6, DPM 7, Passport 12m, Passport 17m




---

**USB**

023-000996-00

USB for settings transfer between monitors

Compatible with T1, ePM 10M, ePM 12M, N1, N12, N15, N17, N19, N22




---

**USB**

023-001673-00

USB for settings transfer between monitors

Compatible with A-Series, Accutorr 7, Passport 8, Passport 12, Passport 12m, Passport 17m




---

**USB Drive**

023-000218-00

USB Drive (32 GB)

Compatible with ePM 10M, ePM 12M, N1, N12, N15, N17, N19, N22

*Cables*



**3/5 Lead ECG Cable, N/T, 10'** 009-005266-00

3/5 Lead ECG Cable, N/T, 10' Used with lead wires: 009-004771-00, 009-004772-00, 009-004765-00, 009-004766-00, 009-004782-00, 009-004783-00, 009-004786-00, 009-004787-00, 115-032955-00, 115-032954-00

Compatible with Passport 8, Passport 12, Passport 12m, Passport 17m, T1, ePM 10m, ePM 12m, N1, N12, N15, N17, N19, N22



**3/5 Lead ECG Cable, N/T, 20'** 009-005267-00

3/5 Lead ECG Cable, N/T, 20' Used with lead wires: 009-004771-00, 009-004772-00, 009-004765-00, 009-004766-00, 009-004782-00, 009-004783-00, 009-004786-00, 009-004787-00, 115-032955-00, 115-032954-00

Compatible with Passport 8, Passport 12, Passport 12m, Passport 17m, T1, ePM 10m, ePM 12m, N1, N12, N15, N17, N19, N22



**3/5 Lead ECG Cable, 6 pin** 0010-30-42782

ECG Cable: 3/5 Lead, Adult/Pediatric, 6 Pin, Defib-Proof, AHA/IEC, 10'  
Used with lead wires: 0010-30-42726, 0010-30-42731, 0010-30-42734, 0010-30-42727, 0010-30-42729

Compatible with DPM 4, DPM 5



**3/5 Lead ECG Cable, 12 pin** 0010-30-42719

ECG Cable: 3/5 Lead, Adult/Pediatric, 12 Pin, Defib-Proof, AHA/IEC, 10'  
Used with lead wires: 0010-30-42726, 0010-30-42731, 0010-30-42734, 0010-30-42727, 0010-30-42729

Compatible with DPM 6, DPM 7, Passport 8, Passport 12, Passport 12m, Passport 17m, T1



**3/5 Lead ECG Cable, 10'** 0012-00-1745-01

ECG Cable: 3/5 Lead, 10' (3.1 m), reusable  
Used with lead wires: 0012-00-1514-03, 0012-00-1514-02, 0012-00-1514-05, 0012-00-1514-06, 0012-00-1503-05, 0012-00-1503-06, 040-000748-01, 040-000746-01

Compatible with Passport V, V12, V21



**3/5 Lead ECG Cable, 10'** 0012-00-1255-01

ECG Cable, 3/5 Lead, 10' (3.1 m), reusable  
Used with lead wires: 0012-00-1262-02, 0012-00-1262-03, 0012-00-1262-08, 0012-00-1262-09, 0012-00-1261-07, 0012-00-1261-08, 0012-00-1261-09

Compatible with Trio, Passport 2, Spectrum, Spectrum OR



**6 Lead ECG Cable, 10'** 0012-00-1746-01

ECG Cable 6 Lead, 10'

Compatible with V12, V21

**3/5 Lead ECG Mobility Cable, 12 pin**

040-001416-00

ECG Cable, Adult/Pediatric, connects to the mobility lead wires (0012-00-1514-03, 0012-00-1514-02, 0012-00-1514-05, 0012-00-1514-06, 0012-00-1503-05, 0012-00-1503-06) and to single patient use lead wires (040-000746-01, 040-000748-01)

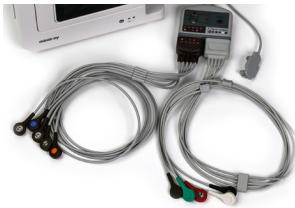
Compatible with DPM 6, DPM 7, Passport 8, Passport 12, Passport 12m, Passport 17m, T1

**12 Lead ECG Cable**

0010-30-42721

ECG Cable, 12 Lead, Adult, defib proof, AHA

Compatible with DPM 6, DPM 7, Passport 12m, Passport 17m, T1

**12 Lead ECG Cable - N/T**

040-003528-00

ECG Cable, 12 Lead, 12 lead ECG used with N/T leadwires

Compatible with N1, N12, N15, N17, N19, N22, Passport 12m, Passport 17m

**ESIS Cables****3/5 Lead ESIS ECG Cable, 12 pin**

0010-30-42723

ECG Cable: 3/5 Lead, Adult/Pediatric, 12 Pin, ESU-Proof, AHA/IEC, 10'

Used with lead wires: 0010-30-42726, 0010-30-42731, 0010-30-42734, 0010-30-42727, 0010-30-42729

Compatible with DPM 6, DPM 7, Passport 8, Passport 12, Passport 12m, Passport 17m, T1

**3/5 Lead ECG Mobility Cable, ESIS, 12 pin**

009-003652-00

ECG cable connects to the mobility lead wires

Used with lead wires: 0012-00-1514-03, 0012-00-1514-02, 0012-00-1514-05, 0012-00-1514-06, 0012-00-1503-05, 0012-00-1503-06, 040-000748-01, 040-000746-01

Compatible with DPM 6, DPM 7, Passport 8, Passport 12, Passport 12m, Passport 17m, T1

**3/5 Lead ESIS ECG Cable, 10'**

0012-00-1745-03

ECG Cable, 3/5 Lead, ESIS, 10' (3.1 m), Reusable

Used with lead wires: 0012-00-1514-03, 0012-00-1514-02, 0012-00-1514-05, 0012-00-1514-06, 0012-00-1503-05, 0012-00-1503-06, 040-000748-01, 040-000746-01

Compatible with Passport V, V12, V21

**3/5 Lead ESIS ECG Cable - 10'**

0012-00-1255-05

ECG Cable, 3/5 Lead, Straight, ESIS 10' (3.1 m)

Used with lead wires: 0012-00-1262-02, 0012-00-1262-03, 0012-00-1262-08, 0012-00-1262-09, 0012-00-1261-07, 0012-00-1261-08, 0012-00-1261-09

Compatible with Passport 2, Spectrum, Spectrum OR



**Mobility ESIS ECG Cable, 10'**

0012-00-1502-03

Mobility ECG Cable, ESIS, 10', AAMI  
 Used with lead wires: 0012-00-1514-03, 0012-00-1514-02, 0012-00-1514-05,  
 0012-00-1514-06, 0012-00-1503-05, 0012-00-1503-06, 040-000748-01, 040-000746-01

Compatible with Passport 2, Spectrum, Spectrum OR

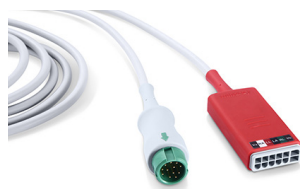


**3/ 5 Lead ESIS ECG Cable, N/T, 10'**

009-005268-00

3/5 Lead ECG Cable, N/T, 10' used with lead wires: 009-004771-00, 009-004772-00,  
 009-004765-00, 009-004766-00, 009-004782-00, 009-004783-00, 009-004786-00,  
 009-004787-00, 115-032955-00, 115-032954-00

Compatible with , Passport 8, Passport 12, Passport 12m, Passport 17m, T1, ePM 10m, ePM 12m, N1, N12, N15, N17, N19, N22



**3/5 Lead ESIS ECG Cable, N/T, 20'**

009-005269-00

3/5 Lead ECG Cable, N/T, 20' used with lead wires: 009-004771-00, 009-004772-00,  
 009-004765-00, 009-004766-00, 009-004782-00, 009-004783-00, 009-004786-00,  
 009-004787-00, 115-032955-00, 115-032954-00

Compatible with , Passport 8, Passport 12, Passport 12m, Passport 17m, T1, ePM 10m, ePM 12m, N1, N12, N15, N17, N19, N22

**Neonate Cables**



**Neonate ECG Cable**

040-000072-00

ECG Cable, Neonatal, 3 Lead, 20' (6.1 m), Reusable  
 Used with 0681-00-0098-01, 0681-00-0098-02

Compatible with Passport V, V12, V21



**Neonate ECG Cable, 6 pin**

0010-30-12377

ECG Cable: 3 Lead, Neonatal, 6 Pin, Defib-Proof, PTU, reusable, 10'  
 Used with lead wires: 0010-30-42896

Compatible with DPM 4, DPM 5



**Neonate ECG Cable - 12 pin**

0010-30-42720

ECG Cable: 3 Lead, Pediatric/Neonatal, 12 Pin, Defib-Proof, reusable, 10'  
 Used with lead wires: 0010-30-42896

Compatible with DPM 6, DPM 7, Passport 8, Passport 12, Passport 12m, Passport 17m, T1



**Neonate ECG Cable - 12 pin**

040-000754-00

3 Lead ECG trunk cable for use with prewired neonate electrodes, 12 Pin, Defib-Proof, AHA  
 Used with lead wires: 0681-00-0098-01, 0681-00-0098-02

Compatible with DPM 6, DPM 7, Passport 8, Passport 12, Passport 12m, Passport 17m, T1, N12, N15, N17, N19, N22

*Cable Adapter*



**ECG Cable Adapter - 12 pin to 6 pin**

0010-30-43054

ECG Cable Adapter, 12 pin to 6 pin. Allows the use of DPM 4 and DPM 5 ECG cables with the DPM 6 and DPM 7 monitors

Compatible with DPM 6, DPM 7

*Electrodes*



**ECG Adult Electrodes**

0010-10-12304

ECG Electrodes: Adult, 10 pcs/pack, Kendall

Compatible with DPM 4, DPM 5, DPM 6, DPM 7, DPM CS, V12, V21, Passport 8, Passport 12, Passport 12m, Passport 17m, T1, TM80, TD60, ePM 10M, ePM 12M, N1, N12, N15, N17, N19, N22



**ECG Radio Opaque Neonate Electrodes**

0681-00-0098-01

Radio Opaque, Neonatal Pre-wired, 3 Lead ECG Electrodes, AAMI, 18" (45.7cm) (Box of 100 packs; each pack contains 3 electrodes)

Compatible with DPM 6, DPM 7, V12, V21, Passport 8, Passport 12, Passport 12m, Passport 17m, T1, ePM 10M, ePM 12M, N1, N12, N15, N17, N19, N22



**ECG Translucent Neonate Electrodes**

0681-00-0098-02

Radio Translucent, Neonatal Pre-wired, 3 Lead ECG Electrodes, AAMI, 18" (45.7 cm) Box of 100 Packs (each pack contains 3 electrodes)

Compatible with DPM 6, DPM 7, V12, V21, Passport 8, Passport 12, Passport 12m, Passport 17m, T1, ePM 10M, ePM 12M, N1, N12, N15, N17, N19, N22

*Lead Wires – 3 Lead Pinch*



**3 Lead ECG Pinch Clip Lead Wires - Adult /Pediatric**

0010-30-42726

3 Lead ECG wires, Clip, Adult/Pediatric, TPU, AHA, 24"

Compatible with DPM 4, DPM 5, DPM 6, DPM 7, Passport 8, Passport 12, Passport 12m, Passport 17m, T1, ePM 10M, ePM 12M, N1, N12, N15, N17, N19, N22



**3 Lead ECG Pinch Clip Lead Wires - Adult /Pediatric**

0010-30-42731

3 Lead ECG wires, Clip, Adult/Pediatric, AHA, 36"

Compatible with DPM 4, DPM 5, DPM 6, DPM 7, Passport 8, Passport 12, Passport 12m, Passport 17m, T1, ePM 10M, ePM 12M, N1, N12, N15, N17, N19, N22





**3 Lead ECG Pinch Clip Lead Wires - Neonate** 0010-30-42896

3 Lead ECG wires, Clip, Neonatal/Infant, 36"

Compatible with DPM 4, DPM 5, DPM 6, DPM 7, Passport 8, Passport 12, Passport 12m, Passport 17m, T1, ePM 10M, ePM 12M, N1, N12, N15, N17, N19, N22



**3 Lead Mobility ECG Pinch Clip Lead Wires - 24"** 0012-00-1514-05

ECG Mobility Lead Wires, 3 Lead, Pinch, 24" (61.0 cm) Reusable, AAMI

Compatible with DPM6, DPM7, Panorama Telepack, Passport 2, Passport V, Spectrum, Spectrum OR, V12, V21, Passport 8, Passport 12, Passport 12m, Passport 17m, T1, ePM 10M, ePM 12M, N1, N12, N15, N17, N19, N22



**3 Lead Mobility ECG Pinch Clip Lead Wires - 36"** 0012-00-1514-06

ECG Mobility Lead Wires, 3 Lead, Pinch, 36" (101.6 cm) Reusable, AAMI

Compatible with DPM6, DPM7, Panorama Telepack, Passport 2, Passport V, Spectrum, Spectrum OR, V12, V21, Passport 8, Passport 12, Passport 12m, Passport 17m, T1, ePM 10M, ePM 12M, N1, N12, N15, N17, N19, N22



**3 Lead ECG Pinch Clip Lead Wires - 24"** 0012-00-1262-08

Lead Wires, 3 Lead, Pinch Clip 24" (61.0 cm), AAMI

Compatible with Trio, Passport 2, Spectrum, Spectrum OR



**3 Lead ECG Pinch Clip Lead Wires - 40"** 0012-00-1262-09

Lead Wires, 3 Lead, Pinch Clip 40" (101.6 cm), AAMI

Compatible with Trio, Passport 2, Spectrum, Spectrum OR



**3 Lead N/T ECG Pinch Clip Lead Wires - 24"** 009-004771-00

ECG Mobility Lead Wires, 3 Lead, Pinch, AHA, 24"

Compatible with TD60, TM70, TM80, ePM 10m, ePM 12m, N1, N12, N15, N17, N19, N22



**3 Lead N/T ECG Pinch Clip Lead Wires - 36"** 009-004772-00

ECG Mobility Lead Wires, 3 Lead, Pinch, AHA, 36"

Compatible with TD60, TM70, TM80, ePM 10M, ePM 12m, N1, N12, N15, N17, N19, N22

*Lead Wires – 3 Lead Snap***3 Lead ECG Snap Lead Wires - Adult/Pediatric**

0010-30-42734

3 Lead ECG Wires, Snap, Adult/Pediatric, 36"

Compatible with DPM 4, DPM 5, DPM 6, DPM 7, Passport 8, Passport 12, Passport 12m, Passport 17m, T1, ePM 10M, ePM 12M, N1, N12, N15, N17, N19, N22

**3 Lead Mobility ECG Snap Lead Wires - 24"**

0012-00-1503-05

ECG Mobility Lead Wires, 3 Lead, Snap, 24" (61.0 cm), Reusable, AAMI

Compatible with DPM 6, DPM 7, Panorama Telepack, Passport 2, Passport V, V12, V21, Passport 8, Passport 12, Passport 12m, Passport 17m, T1, ePM 10M, ePM 12M, N1, N12, N15, N17, N19, N22

**3 Lead Mobility ECG Snap Lead Wires - 36"**

0012-00-1503-06

ECG Mobility Lead Wires, 3 Lead, Snap, 36" (101.6 cm), Reusable, AAMI

Compatible with DPM 6, DPM 7, Panorama Telepack, Passport V, V12, V21, Passport 8, Passport 12, Passport 12m, Passport 17m, T1, ePM 10M, ePM 12M, N1, N12, N15, N17, N19, N22

**3 Lead ECG Snap Lead Wires - 18"**

0012-00-1261-07

Lead Wires, 3 Lead, Snap 18" (45.7 cm), AAMI

Compatible with Trio, Passport 2, Spectrum, Spectrum OR

**3 Lead ECG Snap Lead Wires - 24"**

0012-00-1261-08

Lead Wires, 3 Lead, Snap 24" (61.0 cm), AAMI

Compatible with Trio, Passport 2, Spectrum, Spectrum OR

**3 Lead ECG Snap Lead Wires - 40"**

0012-00-1261-09

Lead Wires, 3 Lead, Snap 40" (101.6 cm), AAMI

Compatible with Trio, Passport 2, Spectrum, Spectrum OR

**3 Lead ECG Snap Lead Wires**

115-004867-00

Lead Wires, 3 Lead, Snap

Compatible with Tel-200



**3 Lead N/T ECG Snap Lead Wires - 24"**

009-004765-00

ECG Mobility Lead Wires, 3 Lead, Snap, AHA, 24"

Compatible with TD60, TM70, TM80, Passport 8, Passport 12, Passport 12m, Passport 17m, T1, ePM 10m, ePM 12m, N1, N12, N15, N17, N19, N22



**3 Lead N/T ECG Snap Lead Wires - 36"**

009-004766-00

ECG Mobility Lead Wires, 3 Lead, Snap, AHA, 36"

Compatible with TD60, TM70, TM80, Passport 8, Passport 12, Passport 12m, Passport 17m, T1, ePM 10m, ePM 12m, N1, N12, N15, N17, N19, N22

*Lead Wires – 5 Lead Pinch*



**5 Lead ECG Pinch Lead Wires - Adult/Pediatric**

0010-30-42727

5 Lead ECG Wires, Clip, Adult/Pediatric, 36"

Compatible with DPM 4, DPM 5, DPM 6, DPM 7, Passport 8, Passport 12, Passport 12m, Passport 17m, T1, ePM 10M, ePM 12M, N1, N12, N15, N17, N19, N22



**5 Lead ECG Pinch Lead Wires - Adult/Pediatric**

0010-30-42729

5 Lead ECG Wires, Clip, Adult/Pediatric, 36"

Compatible with DPM 4, DPM 5, DPM 6, DPM 7, Passport 8, Passport 12, Passport 12m, Passport 17m, T1, ePM 10M, ePM 12M, N1, N12, N15, N17, N19, N22



**5 Lead Mobility ECG Pinch Lead Wires - 24"**

0012-00-1514-02

ECG Mobility Lead Wires, 5 Lead, Pinch, 24" (61.0 cm) Reusable, AAMI

Compatible with DPM 6, DPM 7, Panorama, Passport V, V12, V21, Passport 8, Passport 12, Passport 12m, Passport 17m, T1, ePM 10M, ePM 12M, N1, N12, N15, N17, N19, N22



**5 Lead Mobility ECG Pinch Lead Wires - 36"**

0012-00-1514-03

ECG Mobility Lead Wires, 5 Lead, Pinch, 36" (101.6 cm) Reusable, AAMI

Compatible with DPM 6, DPM 7, Panorama, Passport 2, Passport V, Spectrum, Spectrum OR, V12, V21, Passport 8, Passport 12, Passport 12m, Passport 17m, T1, ePM 10M, ePM 12M, N1, N12, N15, N17, N19, N22



**5 Lead ECG Pinch Lead Wires - 24"**

0012-00-1262-02

Lead Wires, 5 Lead, Pinch Clip 24" (61.0 cm), AAMI

Compatible with Trio, Passport 2, Spectrum, Spectrum OR



**5 Lead ECG Pinch Lead Wires - 40"**

0012-00-1262-03

Lead Wires, 5 Lead, Pinch Clip 40" (101.6 cm), AAMI

Compatible with Trio, Passport 2, Spectrum, Spectrum OR

**5 Lead ECG Pinch Lead Wires**

115-004873-00

Lead Wires, 5 Lead, Pinch

Compatible with Tel-200

**5 Lead N/T ECG Pinch Lead Wires - 24"**

009-004786-00

ECG Mobility Lead Wires, 5 Lead, Pinch, AHA, 24"

Compatible with TD60, TM70, TM80, Passport 8, Passport 12, Passport 12m, Passport 17m, T1, ePM 10m, ePM 12m, N1, N12, N15, N17, N19, N22

**5 Lead N/T ECG Pinch Lead Wires - 36"**

009-004787-00

ECG Mobility Lead Wires, 5 Lead, Pinch, AHA, 36"

Compatible with TD60, TM70, TM80, Passport 8, Passport 12, Passport 12m, Passport 17m, T1, ePM 10m, ePM 12m, N1, N12, N15, N17, N19, N22

**Lead Wires – 5 Lead Snap****5 Lead ECG Snap Lead Wires - Adult/Pediatric**

0010-30-42735

5-Lead ECG Wires, Snap, Adult

Compatible with DPM 4, DPM 5, DPM 6, DPM 7, Passport 8, Passport 12, Passport 12m, Passport 17m, T1, ePM 10M, ePM 12M, N1, N12, N15, N17, N19, N22

**5 Lead Mobility ECG Snap Lead Wires - 24"**

0012-00-1503-02

ECG Mobility Lead Wires, 5 Lead, Snap 24" (61.0 cm) AAMI

Compatible with DPM 6, DPM 7, Panorama, Passport 2, Passport V, V12, V21, Passport 8, Passport 12, Passport 12m, Passport 17m, T1, ePM 10M, ePM 12M, N1, N12, N15, N17, N19, N22

**5 Lead Mobility ECG Snap Lead Wires - 36"**

0012-00-1503-03

ECG Mobility Lead Wires, 5 lead, Snap, 36" (101.6 cm), Reusable, AAMI

Compatible with DPM 6, DPM 7, Panorama, Passport 2, Passport V, V12, V21, Passport 8, Passport 12, Passport 12m, Passport 17m, T1, ePM 10M, ePM 12M, N1, N12, N15, N17, N19, N22



**5 Lead ECG Snap Lead Wires - 24"** 0012-00-1261-02

Lead Wires, 5 Lead, Snap 24" (61.0 cm), AAMI  
 Compatible with Trio, Passport 2, Spectrum, Spectrum OR



**5 Lead ECG Snap Lead Wires - 40"** 0012-00-1261-03

Lead Wires, 5 Lead, Snap 40" (101.6 cm), AAMI  
 Compatible with Trio, Passport 2, Spectrum, Spectrum OR



**5 Lead ECG Snap Lead Wires - Extended Leg** 0012-00-1261-13

Lead Wires, 5 Lead, Snap, Extended Leg, 3/40", 2/60", AAMI  
 Compatible with Trio, Passport 2, Spectrum, Spectrum OR



**5 Lead ECG Snap Lead Wires** 115-004869-00

Lead Wires, 5 Lead, Snap  
 Compatible with Tel-200



**5 Lead N/T ECG Snap Lead Wires - 24"** 009-004782-00

ECG Mobility Lead Wires, 5 Lead, Snap, AHA, 24"  
 Compatible with TD60, TM70, TM80, Passport 8, Passport 12, Passport 12m, Passport 17m, T1, ePM 10m, ePM 12m, N1, N12, N15, N17, N19, N22



**5 Lead N/T ECG Snap Lead Wires - 36"** 009-004783-00

ECG Mobility Lead Wires, 5 Lead, Snap, AHA, 36"  
 Compatible with TD60, TM70, TM80, Passport 8, Passport 12, Passport 12m, Passport 17m, T1, ePM 10m, ePM 12m, N1, N12, N15, N17, N19, N22

*Lead Wires – 6 Lead***6-Lead N/T, Pinch Lead Wires - 24"**

009-004798-00

ECG lead wires, 6 lead, pinch/clip, AHA, 24"

Compatible with N12, N15, N17, N19, N22

**6-Lead N/T, Pinch Lead Wires - 36"**

009-004799-00

ECG lead wires, 6 lead, pinch/clip, AHA, 36"

Compatible with N12, N15, N17, N19, N22

**6-Lead N/T, Snap Lead Wires - 24"**

009-004794-00

ECG lead wires, 6 lead, snap, AHA, 24"

Compatible with N12, N15, N17, N19, N22

**6-Lead N/T, Snap Lead Wires - 36"**

009-004795-00

ECG lead wires, 6 lead, snap, AHA, 36"

Compatible with N12, N15, N17, N19, N22

*Lead Wires – 12 Lead***12-Lead ECG Lead Wires**

0012-00-1411-02

Lead Wire Set for 12 Lead ECG Monitoring, AAMI

Compatible with Passport 2, Spectrum

**1- Lead ECG Lead Wires, Chest**

0010-30-42908

Lead Wires, Chest, for 12 Lead ECG Monitoring

Compatible with DPM6, DPM7, Passport 12m, Passport 17m, T1, N1, N12, N15, N17, N19, N22



**12-Lead ECG Lead Wires, Chest, Clip** 0010-30-42904  
 Lead Wires, pinch/clip, Chest, for 12 Lead ECG Monitoring  
 Compatible with DPM6, DPM7, Passport 12m, Passport 17m, T1, N1, N12, N15, N17, N19, N22



**12-Lead ECG Lead Wires, Limb** 0010-30-42906  
 Lead Wires, Limb, for 12 Lead ECG Monitoring  
 Compatible with DPM6, DPM7, Passport 12m, Passport 17m, T1



**12-Lead ECG Lead Wires, Limb, Clip** 0010-30-42902  
 Lead Wires, pinch/clip, Limb, for 12 Lead ECG Monitoring  
 Compatible with DPM6, DPM7, Passport 12m, Passport 17m, T1

*Single Patient Use Lead Wires*



**3 Lead Disposable ECG Snap Lead Wires - 24"** 040-000748-01  
 3 Lead Disposable ECG Snap Lead Wires, Single Patient Use, AAMI, 24", 20/box  
 Compatible with Panorama Telepack, V12, V21, DPM 6, DPM 7, Passport V, Passport 2, Spectrum, Passport 8, Passport 12, Passport 12m, Passport 17m, T1



**5 Lead Disposable ECG Snap Lead Wires - 24"** 040-000746-01  
 5 Lead Disposable ECG Snap Lead Wires, Single Patient Use, AAMI, 24", 20/box  
 Compatible with Panorama Telepack, V12, V21, DPM 6, DPM 7, Passport V, Passport 2, Spectrum, Passport 8, Passport 12, Passport 12m, Passport 17m, T1



**3 Lead Disposable N/T ECG Snap Lead Wires - 24"** 115-032954-00  
 3 Lead Disposable ECG Snap Lead Wires, Single Patient Use, AHA, 24", 20/box  
 Compatible with TD60, TM70, TM80, Passport 8, Passport 12, Passport 12m, Passport 17m, T1, ePM 10m, ePM 12m, N1, N12, N15, N17, N19, N22



**5 Lead Disposable N/T ECG Snap Lead Wires - 24"** 115-032955-00  
 5 Lead Disposable ECG Snap Lead Wires, Single Patient Use, AHA, 24", 20/box  
 Compatible with TD60, TM70, TM80, Passport 8, Passport 12, Passport 12m, Passport 17m, T1, ePM 10M, ePM 12M, N1, N12, N15, N17, N19, N22



**EEG Cable**

040-001594-00

Cable for EEG, adult/pediatric, reusable (included with EEG module BOM)

Compatible with N12, N15, N17, N19, N22

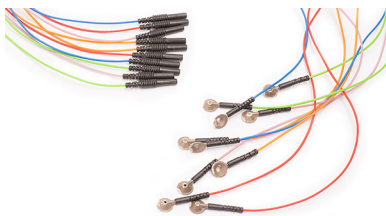


**Subdermal – EEG**

040-001596-00

Subdermal for EEG, adult/pediatric, disposable

Compatible with N12, N15, N17, N19, N22



**Cup Electrodes – EEG, Adult**

040-001598-00

Cup electrodes for EEG, adult/pediatric, reusable

Compatible with N12, N15, N17, N19, N22

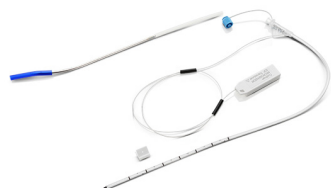


**Cup Electrodes – EEG, Pediatric**

040-001602-00

Cup electrodes for EEG (D=6 mm), pediatric, reusable

Compatible with N12, N15, N17, N19, N22



**Codman ICP Sensor Kit**

040-002336-00

Codman ICP sensor, kit, pkg of 1

Compatible with N1, N12, N15, N17, N19, N22



**ICP Cable – 12 Pin**

009-005460-00

12 Pin ICP Cable (required to connect to Codman ICP sensor)

Compatible with N1, N12, N15, N17, N19, N22



**ICP Cable**

115-025257-00

Camino ICP Cable (use with IBP module)

Compatible with N12, N15, N17, N19, N22

*IBP Cables*



**Becton Dickinson IBP Cable - 6 Pin**

001C-30-70758

6 Pin IBP Cable (for Becton Dickinson)

Compatible with DPM 4, DPM 5



**Becton Dickinson IBP Cable - 12 Pin**

001C-30-70757

12 Pin IBP Cable (for Becton Dickinson)

Compatible with DPM 6, DPM 7, Passport 8, Passport 12, Passport 12m, Passport 17m, T1, ePM 10M, ePM 12M, N1, N12, N15, N17, N19, N22



**Double-end IBP Extension Cable**

040-001029-00

IBP extended cable with dual-receptacle used to support the double-channel IBP function

Compatible with Passport 8, Passport 12, Passport 12m, Passport 17m, T1, N1



**Edwards IBP Cable - 6 Pin**

0010-21-43094

6 Pin IBP Cable for Edwards

Compatible with DPM 4, DPM 5



**Edwards IBP Cable - 12 Pin**

0010-21-12179

12 Pin IBP Cable for Edwards

Compatible with DPM 6, DPM 7, Passport 8, Passport 12, Passport 12m, Passport 17m, T1, ePM 10M, ePM 12M, N1, N12, N15, N17, N19, N22

**Edwards (TruWave) Cable - 12 Pin**

125-000123-00

12 Pin IBP Cable for Edwards (TruWave)

Compatible with ePM10M, ePM12M, N12, N15, N17, N19, N22



**Hospira IBP Cable - 6 Pin**

001C-30-70760

6 Pin IBP Cable (for Hospira)

Compatible with DPM 4, DPM 5





**Hospira IBP Cable - 12 Pin** 001C-30-70759

12 Pin IBP Cable (for Hospira)

Compatible with DPM 6, DPM 7, Passport 8, Passport 12, Passport 12m, Passport 17m, T1, ePM 10M, ePM 12M, N1, N12, N15, N17, N19, N22



**Hospira IBP Cable** 040-000052-00

IBP Cable, Hospira Transpac IV, 12'

Compatible with Passport V, V12, V21



**IBP Cable Adapter** 0010-20-42795

IBP cable adapter (12 pin to 6 pin)

Compatible with DPM 6, DPM 7, Passport 8, Passport 12, Passport 12m, Passport 17m, T1



**IBP Interface Cable** 0012-00-1245

Cable, Interface, Transducer

Compatible with Trio, Passport 2, Spectrum, Spectrum OR



**Memscap IBP Cable - 6 Pin** 0010-21-43081

6 Pin IBP Cable for Memscap (SP844 transducer)

Compatible with DPM 4, DPM 5



**Memscap IBP Cable - 12 Pin** 0010-21-43082

12 Pin IBP Cable for Memscap (SP844 transducer)

Compatible with DPM 6, DPM 7, Passport 8, Passport 12, Passport 12m, Passport 17m, T1





---

**Wireless Keyboard and Mouse**

023-000524-00

Wireless keyboard and mouse

Compatible with N1, N12, N15, N17, N19, N22, Passport 12m, Passport 17m, ePM 10M, ePM 12M



---

**Keyboard and Mouse**

023-000525-00

Keyboard and mouse

Compatible with N1, N12, N15, N17, N19, N22, Passport 12m, Passport 17m, ePM 10M, ePM 12M

---

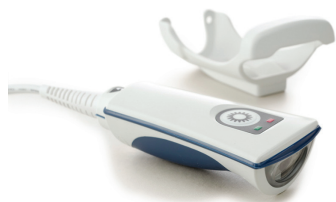
**Keyboard Wall Mount Bracket**

045-000934-00

Keyboard wall mount bracket

Compatible with N1, N12, N15, N17, N19, N22, Passport 12m, Passport 17m

*Bar Code Scanners*



**Jadak 2D Barcode Scanner**

115-039575-00

2D Bar Code Scanner (scans 1D/2D barcodes)

Compatible with Accutorr 7, ePM 10m, ePM 12m, N1, N12, N15, N17, N19, N22, VS9



**Jadak 2D Barcode and RFID Scanner**

023-002111-00

2D Bar Code Scanner - Dual Frequency Barcode Scanner

Compatible with Accutorr 7, VS9

*Telemetry Bags*



**Disposable DPM™ CS Telemetry Pouch**

0152-10-39878

Disposable Transmitter Bag protects the DPM CS Telepack

Compatible with DPM CS Ambulatory Telepack



**Disposable Panorama Telepack Pouch**

0202-00-0179-02

Disposable Panorama Telepack Pouch , pkg 25

Compatible with Panorama Telepack



**Disposable TD60/TM80 Pouch**

115-032957-00

Disposable Pouch protects telemetry device, pkg 25

Compatible with TD60, TM70, TM80

*AC/DC Adapter***AC/DC Adapter**

022-000059-00

AC/DC Adapter

Compatible with T1

*Adapter Cables***Analog Out Interface Cable**

0012-00-1801-01

Terminated pigtail cable – IABP sync cable

Compatible with V12, V21, Passport 12m, Passport 17m, DPM6, DPM7

**Analog Output Cable**

009-003117-00

Analog output cable

Compatible with Passport 8, Passport 12, ePM 10m, ePM 12m

**Continuous Cardiac Output / SVO<sub>2</sub> Cable**

009-000259-00

CCO/SvO<sub>2</sub> link interface replacement cable

Compatible with Passport 12m, Passport 17m, N12, N15, N17, N19, N22

**Multifunction Analog Output Cable**

009-002944-00

Multi-function analog output cable, IABP analog output cable

Compatible with T1

**Synchronization Cable**

009-003118-00

Synchronization Cable

Compatible with Passport 8, Passport 12, ePM 10m, ePM 12m

**Unterminated Pigtail Cable for Analog Out**

0012-00-1801-02

Unterminated pigtail cable for analog out (outputs 5 signals: IBP1, IBP2, ECG, defib sync &amp; ground)

Compatible with V12, V21

*Communication Cable*



**PC Communication Cable**

0850-20-30725

1 PC communication cable

Compatible with DPM 1, DPM 2

*Defib Cables*



**Defib Sync Cable**

009-000027-00

Defibrillator synchronization cable

Compatible with DPM 6, DPM 7, Passport 12m, Passport 17m



**Defib Sync Cable**

009-003249-00

Defibrillator synchronization cable, 12 pin

Compatible with T1

*Docking Station Cables*



**Passport M Series to N1/T1 Docking Station Cable, 1m**

009-003591-00

Passport M Series to N1/T1 - docking station cable, 1 m

Compatible with N1, T1



**Passport M Series to N1/T1 Docking Station Cable, 4m**

009-00352-00

Passport M Series to N1/T1 - docking station cable, 4 m

Compatible with N1, T1



**Passport M Series to N1/T1 Docking Station Cable, 10m**

009-005894-00

Passport M Series to N1/T1 - docking station cable, 10 m

Compatible with N1, T1



**N-Series Docking Station Cable, 2 m**

009-006593-00

Cable connects the N-Series to N1/T1 docking station cable, 2 m

Compatible with N12



**N-Series Docking Station Cable, 4 m**

009-005123-00

Cable connects the N-Series to N1/T1 docking station cable, 4 m

Compatible with N12, N15, N17, N19, N22



**N-Series Docking Station Cable, 10 m**

009-006594-00

Cable connects the N-Series to N1/T1 docking station cable, 10 m

Compatible with N12, N15, N17, N19, N22



**N-Series Docking Station Cable, 20 m**

009-009766-00

Cable connects the N-Series to N1/T1 docking station cable, 20 m

Compatible with N12, N15, N17, N19, N22

*Ethernet (CS1) Cables*



**CAT 5 Ethernet Cable, Crossover, 6'**

0012-00-1392-06

CAT 5 Ethernet Cable, Crossover, STP, 6' (1.83 m)

Compatible with Passport 2, Passport V, Spectrum, Spectrum OR, V12, V21



**CAT 5 Ethernet Cable, Patch, 6'**

0012-00-1274-01

CAT 5 Ethernet Cable, Patch, STP, 6' (1.83m)

Compatible with Passport 2, Passport V, Spectrum, Spectrum OR, V12, V21

*Gas Module Cables*



**Serial Port to Gas Module Cable, 1'**

0012-00-1276-01

Cable, Serial Port to Gas Module, 1' (0.3 m)

Compatible with Passport 2, Passport V, Spectrum, Spectrum OR



**Serial Port to Gas Module Cable, 6'**

0012-00-1276-02

Cable, Serial Port to Gas Module, 6' (1.8 m)

Compatible with Passport 2, Passport V, Spectrum, Spectrum OR

*Grounding Cable*



**Grounding Cable**

1000-21-00122

Grounding Cable

Compatible with DPM 4, DPM 5, DPM 6, DPM 7, Passport 12m, Passport 17m, ePM 10M, ePM 12M, N12, N15, N17, N19, N22

*IABP Cables*



**Analog Output Cable (IABP)**

6800-20-50146

Analog output cable for Intra-aortic balloon pump

Compatible with DPM6, DPM7, Passport 12m, Passport 17m



**IABP Interface Cable, V-Series**

0012-00-1801-01

IABP Interface Cable

Compatible with V12, V21, N1



**IABP and Defib Sync Cable, N-Series**

009-005391-00

MPM analog output (IABP) and defib sync cable

Compatible with N1, N12, N15, N17, N19, N22

*Nurse Call Cables*



**Nurse Call Cable**

8000-21-10361

Nurse Call Cable

Compatible with Accutorr V, DPM 3, DPM 4, DPM 5, DPM 6, DPM 7, Passport V, N12, N15, N17, N19, N22



**Nurse Call Cable**

009-003116-00

Nurse Call Cable

Compatible with Accutorr 7, Passport 8, Passport 12, ePM 10m, ePM 12m



**Unterminated Nurse Call Cable, 9'**

0012-00-1277-02

Unterminated Nurse Call Cable, 9' (2.7 m)

Compatible with Passport 2, Spectrum, Spectrum OR, V12, V21

*Power Cords*



**AC Power Cord, 110V**

0012-25-0001

AC Power Cord, 110V

Compatible with Accutorr V, Passport 2, Passport V, Passport 8, Passport 12, Passport 12m, Passport 17m Spectrum, Spectrum OR, V12, V21, Accutorr 3, Accutorr 7, ePM 10m, ePM 12m, N12, N15, N17, N19, N22



**T1 Power Supply**

115-020874-00

Power supply with power cord

Compatible with T1

*Serial Port Cables*



**Serial Port Cable**

009-009117-00

Serial Port Cable

Compatible with ePM 10m, ePM 12m, N12, N15, N17, N19, N22



**Interface Cable** 0012-00-1275-01

Cable, Interface, PC, Serial Port to Serial Port, 10'

Compatible with Passport 2, Passport V, Spectrum, Spectrum OR, Accutorr 3



**Serial Port Cable – (DIAP)** 009-003436-00

Cable, Interface, PC, Serial Port to Serial Port

Compatible with Accutorr 3, Accutorr 7, Passport 8, Passport 12, VS9

*SMR Cables*

**SMR Cable, 2 m** 009-005121-00

USB cable, 2 m

Compatible with N12, N15, N17, N19, N22

**SMR Cable, 4 m** 009-011808-00

USB cable, 4 m

Compatible with N12, N15, N17, N19, N22

**SMR Cable, 10 m** 009-005122-00

USB cable, 10 m

Compatible with N12, N15, N17, N19, N22

*USB Cables*



**USB Cable, 2.3 m** 009-005118-00

USB cable, 2.3 m

Compatible with N22, N19



**USB Cable, 5 m** 009-008237-00

USB cable, 5 m

Compatible with N22, N19





**USB Cable, 10 m**

009-005120-00

USB cable, 10 m

Compatible with N22, N19



**Cable, Mod Bus, Powered USB, 6'**

0012-00-1803-12

Cable, mod bus, powered USB, 6'

Compatible with V12, V21



**Cable, Mod Bus, Powered USB, 6'**

6800-20-50319

Cable, mod bus, powered USB, 6'

Compatible with DPM 6, DPM 7

*Video Cables*

**Video Cable, 2.3 m**

009-005115-00

Video cable, 2.3 m

Compatible with N22, N19

**Video Cable, 5 m**

009-007740-00

Video cable, 5 m

Compatible with N22, N19

**Video Cable, 10 m**

009-005117-00

Video cable, 10 m

Compatible with N22, N19

*Bedrail Mounts*



**Accutorr 7 Bedrail Mount Kit**

115-020575-00

Bedrail clamp mounts the Accutorr 7 to the patient's bed

Compatible with Accutorr 7



**Bedrail Mount Kit**

0040-00-0293

Bedrail Mount Kit mounts monitor to the bedrail of a patient bed

Compatible with Passport 2, Spectrum, Spectrum OR



**ePM Bedrail Clamp**

8000-30-90170

Bedrail Clamp

Compatible with DPM 4, DPM 5, ePM 10M, ePM 12M



**N1 Bedrail Hook**

115-050757-00

Bedrail Hook

Compatible with N1



**ePM 10M/ 12M Bedrail Hook**

8000-30-90169

Bedrail Hook mounts the monitors to the patient bed

Compatible with DPM 4, DPM 5, ePM 10M, ePM 12M



**N12 Bedrail Hook**

115-045865-00

Bedrail hook mounts the N12 to a bedrail

Compatible with N12



**Passport 8 Bedrail Mount**

115-012697-00

Bedrail mount mounts the Passport 8 to patient's bed

Compatible with Passport 8



**Passport 12 Bedrail Mount**

115-012698-00

Bedrail clamp mounts the Passport 12 to patient's bed

Compatible with Passport 12

*Miscellaneous Mounts*



**Pole Mounting Kit**

045-001230-00

Mounting Kit to mount the T1, N1 Docking Station to a pole

Compatible with T1, N1

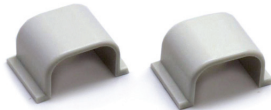


**Cable Hooks**

0436-00-0206

GCX Cable Hook (mounts under Arm)

Compatible with DPM 6, DPM 7, Passport 12m, Passport 17m, ePM 10M, ePM 12M, N1, N12, N15, N17, N19, N22

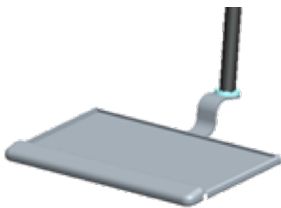


**VHM Cable Management Clips**

034-000108-00

VHM Cable Management Clips used to organize cables with the VHM wall mount

Compatible with V12, V21



**N-Series Keyboard Tray Kit**

115-033871-00

GCX M Series Keyboard Tray Kit with 9" down post

Compatible with N1, N19, N22

**Keyboard Wall Mount Bracket**

045-000934-00

Keyboard wall mount bracket

Compatible with N1, N12, N15, N17, N19, N22

**9" Down Post Kit with Cross Clamp**

045-003254-00

The 9" down post kit with cross clamp mounts the N1 dock to the GCX VHM or M- Series arms.

Compatible with N1

*Mounting Brackets & Plates*



**Quick Release Mount**

045-003424-00

Quick release mounts the N12 to the rolling stand. This product also mounts the N1 to the Mindray Rolling Stand

Compatible with N12, N1



**Quick Release Mount**

045-003424-00

Quick release mounts the monitors to the rolling stand wall mount.

Compatible with N12, N1, Accutorr 3, Accutorr 7, VS9, ePM 10M, ePM 12M



**N1 Wall Mount Quick Release**

045-003424-00

Quick release plate mounts the N1 to a GCX wall mount

Compatible with N1

**N15/N17 Plate for Rolling Stand**

045-000955-00

N15 mounting plate for rolling stand mounts the N15/N17 to the rolling stand

Compatible with N15, N17



**Passport 12m/17m GCX Wall Mount Plate**

0386-00-0363

This mounting plate mounts the Passport 12m/17m to the 12" GCX M-Series wall mount and the GCX VHM.

Compatible with DPM 6, DPM 7, Passport 12m, Passport 17m



**SMR Bracket**

045-000933-00

Satellite module rack wall mount bracket.

Compatible with DPM 6, DPM 7, Passport 12m, Passport 17m, N17, N19, N22




---

**Passport 12m Standard Mounting Bracket for Wall Mount** 0010-20-42686
 

---

The standard mounting bracket is a stationary mounting plate that mounts the Passport 12m to GCX wall mounts.

Compatible with Passport 12m




---

**Passport 12m Quick Release Bracket** 045-001275-00
 

---

Quick release bracket mounts the Passport 12m to GCX wall mounts.

Compatible with Passport 12m



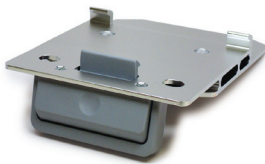

---

**Quick Release Mount for Rolling Stand – Passport 8 and T1** 045-000953-00
 

---

Quick release mounting bracket mounts the Passport 8 or the T1 to the Mindray Value rolling stand

Compatible with Passport 8, T1 Docking Station




---

**Quick Release Mount for Passport 8 / 12 and T1** 045-000954-00
 

---

Quick release mounts the Passport 12 to the Transport Rolling stand. This mount also mounts the Passport 8, Passport 12 and T1 to the GCX wall mount.

Compatible with Passport 8, Passport 12, T1 Docking Station




---

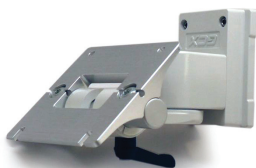
**V12 Mounting Bracket** 115-003088-00
 

---

Mounting bracket for Rolling Stand used to mount the V12 to the V-Series rolling stand

Compatible with V12

### Remote Display (RD1) Mounts and Displays




---

**Remote Display Wall Mount** 0040-00-0368
 

---

GCX flush wall mount used to mount remote flat panel displays

Compatible with Panorama, Passport V, Spectrum, Spectrum OR




---

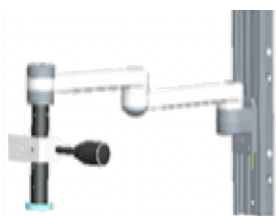
**Wall Mount, VHM** 0436-00-0210
 

---

VHM Arm (VESAmount) for ELO Display.

Compatible with T1, N1

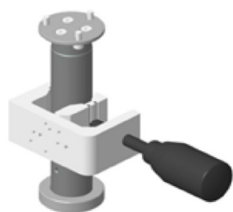
*SMR Mounts*



**M-Series Articulating Arm for Mounting SMR** 115-033882-00

M-Series articulating arm with SMR Clamp Mount and 6" down post for mounting SMR

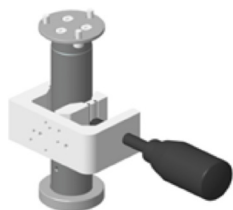
Compatible with N12, N15, N17, N19, N22



**SMR Clamp Mounting Kit with 6" Post** 115-035995-00

SMR clamp mounting kit with 6" post

Compatible with N12, N15, N17, N19, N22



**SMR Clamp Mounting Kit with 9" Post** 115-045621-00

SMR clamp mounting kit with 9" post

Compatible with N12, N15, N17, N19, N22

*Wall Mounts*



**M-Series Wall Mount, 16"** 045-003427-00

GCX M-Series 16" wall mount includes the quick release mounting plate

Compatible with Accutorr 3, Accutorr 7, VS9, N1



**Accutorr Vital Signs 6" Wall Mount** 115-025386-00

6" M Series wall mount with basket. Ideal for small rooms where space is limited

Compatible with Accutorr 3, Accutorr 7, VS9



**Passport 12m Wall Mount** 045-000926-00

GCX M-Series 12" wall mount for Passport 12m includes wall mount and standard mounting bracket (0010-20-42686)

Compatible with DPM 6, Passport 12m



**Passport 12m M-Series Wall Mount with Quick Release Bracket** 045-001300-00

GCX M-Series wall mount with quick release bracket

Compatible with Passport 12m




---

**Passport 12m VHM Wall Mount with Quick Release**

045-001301-00

GCX Variable Height Mount with quick release

Compatible with Passport 12m




---

**Passport 17m Wall Mount**

045-000929-00

M-Series 12" wall mount for Passport 17m includes wall mount and standard mounting bracket

Compatible with DPM 7, Passport 17m




---

**Passport 17m VHM Wall Mount with Standard Bracket**

045-001302-00

GCX Variable Height Mount with quick release

Compatible with Passport 17m




---

**M-Series Wall Mount**

045-000931-00

M-Series 12" wall mount with quick release bracket

Compatible with Passport 8, Passport 12, T1 Docking Station




---

**VHM Wall Mount**

045-002148-00

Variable Height Wall Mount with quick release bracket

Compatible with Passport 8, Passport 12, T1 Docking Station, ePM 10m, ePM 12m

---

**Satellite Modular Rack**

115-03887-00

8-slot satellite module rack (SMR) with handle, hook, 2 meter cable

Compatible with N15, N17, N19, N22

---

**T1 Docking Station Down Post Kit**

045-001228-00

6" Downpost Kit (to mount the N1 dock to VHM or M-Series arm)

Compatible with T1, N1





**Wall Mount - 12"**

0436-00-0169

GCX M-Series 12" Wall Mount, used to mount Mindray monitors to the wall  
Does not include monitor wall mount brackets or plates.

Compatible with Accutorr V, DPM 4, DPM 5 , DPM 6, Passport 2, Passport V, Spectrum, Spectrum OR, Trio, Passport 8, Passport 12, Passport 12m

**N19/N22 External Display GCX VHM Arm (VESA Mount)**

034-000782-00

N19/N22 External display GCX VHM arm (VESA mount)

Compatible with N19, N22

**N19/N22 External Display GCX M-Series 12" Pivot Arm (VESA Mount)**

034-000457-00

N19/N22 External Display GCX M Series 12" pivot arm (VESA mount)

Compatible with N19, N22

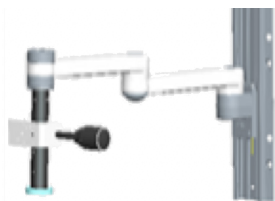


**N19/N22 Screen Rotation Kit**

121-001636-00

The rotating kit includes 115-033880 Host to GCX Mounting Kit and 115-051379-00 Mounting Kit for rotation

Compatible with N19, N22

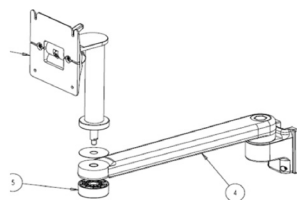


**M-Series Articulating Arm for Mounting SMR**

115-033882-00

M-Series articulating arm and SMR Clamp Mount w 6" down post for mounting SMR

Compatible with N19, N22



**M-Series 16" Arm with 6" Riser to Mount N19/N22 to an Anesthesia System**

034-000454-00

Compatible with N19, N22



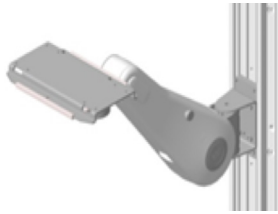
**Main Unit to GCX Mounting Kit**

115-033880-00

(contained in N19/N22 Rotating Kit Sales BOM pn 121-001636-00)

Compatible with N19, N22





---

**N12/N15/N17 GCX VHM Series Arm with Transition Plate** 045-003253-00

N12/N15/N17 GCX VHM series arm with transition plate

Compatible with N12, N15, N17



---

**N12/N15/N17 M-Series 12" Arm with Transition Plate** 045-003426-00

N12/N15/N17 M Series 12" arm with transition plate

Compatible with N12, N15, N17



---

**N12/N15/N17 Transition Mounting Plate** 045-003425-00

N12/N15/N17 Transition Mounting Plate

Compatible with N12, N15, N17

Mindray™ North America's line of reusable and single patient use disposable blood pressure cuffs are the ideal choice for your noninvasive blood pressure supplies needs. Our cuffs are cost effective yet retain the most important qualities – comfort and accuracy for your patients. Color coded by size for instant identification, reusable and single patient use cuffs are latex free and conform to the standards set by the AHA.

**Neonate Blood Pressure Cuffs**



**Single Patient Use CM1500A Neonatal Blood Pressure Cuff** 125-000051-00

CM1500A neonate cuff, single-patient use, limb circumference 3.1 to 5.7cm, box of 20

Compatible with DPM 3, DPM 4, DPM 5, DPM 6, DPM 7, Accutorr 3, Accutorr7, VS9, Passport 8, Passport 12, Passport 12m, Passport 17m, T1, N12, N15, N17, N19, N22



**Single Patient Use CM1500B Neonatal Blood Pressure Cuff** 125-000052-00

CM1500B neonate cuff, single-patient use, limb circumference 4.3 to 8.0cm, box of 20

Compatible with DPM 3, DPM 4, DPM 5, DPM 6, DPM 7, Accutorr 3, Accutorr7, VS9, Passport 8, Passport 12, Passport 12m, Passport 17m, T1, N12, N15, N17, N19, N22



**Single Patient Use CM1500C Neonatal Blood Pressure Cuff** 125-000053-00

CM1500C neonate cuff, single-patient use cuff, limb circumference 5.8 to 10.9cm, box of 20

Compatible with DPM 3, DPM 4, DPM 5, DPM 6, DPM 7, Accutorr 3, Accutorr7, VS9, Passport 8, Passport 12, Passport 12m, Passport 17m, T1, N12, N15, N17, N19, N22



**Single Patient Use CM1500D Neonatal Blood Pressure Cuff** 125-000054-00

CM1500D neonate cuff, single-patient use cuff, limb circumference 7.1 to 13.1cm, box of 20

Compatible with DPM 3, DPM 4, DPM 5, DPM 6, DPM 7, Accutorr 3, Accutorr7, VS9, Passport 8, Passport 12, Passport 12m, Passport 17m, T1, N12, N15, N17, N19, N22



**Single Patient Use Neonatal Size 1 Blood Pressure Cuff** 0683-23-0001

Neonatal Size 1, single patient use, limb circumference: 3 to 6cm, box of 10

Compatible with Accutorr V, Passport 2, Passport V, Spectrum, Spectrum OR, V12, V21



**Single Patient Use Neonatal Size 2 Blood Pressure Cuff** 0683-23-0002

Neonatal Size 2, single patient use, limb circumference: 5 to 8cm, box of 10

Compatible with Accutorr V, Passport 2, Passport V, Spectrum, Spectrum OR, V12, V21



**Single Patient Use Neonatal Size 3 Blood Pressure Cuff** 0683-23-0003

Neonatal Size 3, single patient use, limb circumference: 7 to 10cm, box of 10

Compatible with Accutorr V, Passport 2, Passport V, Spectrum, Spectrum OR, V12, V21



**Single Patient Use Neonatal Size 4 Blood Pressure Cuff** 0683-23-0004

Neonatal Size 4, single patient use, limb circumference: 9 to 13cm, box of 10

Compatible with Accutorr V, Passport 2, Passport V, Spectrum, Spectrum OR, V12, V21



**Single Patient Use Neonatal Size 5 Blood Pressure Cuff** 0683-23-0005

Neonatal Size 5, single patient use, limb circumference: 12 to 17cm, box of 10

Compatible with Accutorr V, Passport 2, Passport V, Spectrum, Spectrum OR, V12, V21

**Neonatal Disposable Cuff Starter Kit** 115-076325-00

Neonatal disposable cuff starter kit-includes 1 of each size cuff and hose

Compatible with N12, N15, N17, N19, N22

**NIBP Hoses**



**NIBP Hose** 6200-30-09688

NIBP tubing, Adult/Pediatric/Infant/Neonate

Compatible with DPM 6, DPM 7, Accutorr 3, Accutorr 7, VS9, Passport 8, Passport 12, Passport 12m, Passport 17m, T1, ePm 10M, ePM 12M, N1, N12, N15, N17, N19, N22



**NIBP Hose** 509B-30-06259

NIBP tubing, Adult/Pediatric/Infant

Compatible with DPM 3, DPM 4, DPM 5

**Extension Air Hose BP10** 040-002379-00

NIBP hose for BP10

Compatible with BP10



**NIBP Hose - Neonate** 509B-30-06260  
 NIBP tubing, Neonatal, 3 m  
 Compatible with DPM 3, DPM 4, DPM 5



**NIBP Hose - Neonate** 6200-30-11560  
 NIBP tubing, Neonatal, with connectors (3 m)  
 Compatible with DPM 6, DPM 7, Accutorr 3, Accutorr7, Passport 8, Passport 12, Passport 12m, Passport 17m, T1, N1, N12, N15, N17, N19, N22



**NIBP Hose, 5'** 0683-04-0003  
 NIBP Hose, 5' (1.5 m), Quick Connect to Quick Connect  
 Compatible with Accutorr V, Duo, Trio, Passport 2, Passport V, Spectrum, Spectrum OR, V12, V21



**NIBP Hose, 10'** 0683-04-0004  
 NIBP Hose, 10' (3.5 m) Quick Connect to Quick Connect  
 Compatible with Accutorr V, Duo, Trio, Passport 2, Passport V, Spectrum, Spectrum OR, V12, V21

**Reusable Blood Pressure Cuffs**



**Reusable Cuff Starter Kit** 115-031807-00  
 Reusable NIBP Cuff Kit: Includes one Child, Small Adult, Adult, Large Adult, and Thigh cuff  
 Compatible with Accutorr V, Accutorr 3, Accutorr 7, DPM 3, DPM 4, DPM 5, DPM 6, DPM 7, VS9, Duo, Trio, Passport 2, Passport V, Spectrum, Spectrum OR, V12, V21, Passport 8, Passport 12, Passport 12m, Passport 17m, T1, ePM 10M, ePM 12M, N1, N12, N15, N17, N19, N22, TD60/ TM70/TM80 with BP 10 module



**Child Reusable Blood Pressure Cuff** 115-027713-00  
 Reusable NIBP cuff, Child, limb circumference: 10 to 19cm, quick connect  
 Compatible with Accutorr V, Accutorr 3, Accutorr7, DPM 3, DPM 4, DPM 5, DPM 6, DPM 7, VS9, Duo, Trio, Passport 2, Passport V, Spectrum, Spectrum OR, V12, V21, Passport 8, Passport 12, Passport 12m, Passport 17m, T1, ePM 10M, ePM 12M, N1, N12, N15, N17, N19, N22, TD60/ TM70/TM80 with BP 10 module



**Small Adult Reusable Blood Pressure Cuff** 115-027714-00  
 Reusable NIBP cuff, Small Adult, limb circumference: 18 to 26cm, quick connect  
 Compatible with Accutorr V, Accutorr 3, Accutorr7, DPM 3, DPM 4, DPM 5, DPM 6, DPM 7, VS9, Duo, Trio, Passport 2, Passport V, Spectrum, Spectrum OR, V12, V21, Passport 8, Passport 12, Passport 12m, Passport 17m, T1, TD60, TM80, ePM 10M, ePM 12M, N1, N12, N15, N17, N19, N22, TD60/ TM70/TM80 with BP 10 module



**Adult Reusable Blood Pressure Cuff**

115-027715-00

Reusable NIBP cuff, Adult, limb circumference: 25 to 35cm, quick connect

Compatible with Accutorr V, Accutorr 3, Accutorr7, DPM 3, DPM 4, DPM 5, DPM 6, DPM 7, VS9, Duo, Trio, Passport 2, Passport V, Spectrum, Spectrum OR, V12, V21, Passport 8, Passport 12, Passport 12m, Passport 17m, T1, TD60, TM80, ePM 10M, ePM 12M, N1, N12, N15, N17, N19, N22, TD60/ TM70/TM80 with BP 10 module



**Adult Long Reusable Blood Pressure Cuff**

115-027718-00

Reusable NIBP Cuff, Adult Long, limb circumference: 25 to 35cm, quick connect

Compatible with Accutorr V, Accutorr 3, Accutorr 7, DPM 3, DPM 4, DPM 5, DPM 6, DPM 7, VS9, Duo, Trio, Passport 2, Passport V, Spectrum, Spectrum OR, V12, V21, Passport 8, Passport 12, Passport 12m, Passport 17m, T1, TD60, TM80, ePM 10M, ePM 12M, N1, N12, N15, N17, N19, N22, TD60/ TM70/TM80 with BP 10 module



**Large Adult Reusable Blood Pressure Cuff**

115-027716-00

Reusable NIBP cuff, Large Adult, limb circumference: 33 to 47cm, quick connect

Compatible with Accutorr 3, Accutorr 7, Accutorr V, DPM 3, DPM 4, DPM 5, DPM 6, DPM 7, VS9, Duo, Trio, Passport 2, Passport V, Spectrum, Spectrum OR, V12, V21, Passport 8, Passport 12, Passport 12m, Passport 17m, T1, TD60, TM80, ePM 10M, ePM 12M, N1, N12, N15, N17, N19, N22, TD60/ TM70/TM80 with BP 10 module



**Large Adult Long Reusable Blood Pressure Cuff**

115-027719-00

Reusable NIBP Cuff, Large Adult Long, limb circumference: 33 to 47cm, quick connect

Compatible with Accutorr 3, Accutorr 7, Accutorr V, DPM 3, DPM 4, DPM 5, DPM 6, DPM 7, VS9, Duo, Trio, Passport 2, Passport V, Spectrum, Spectrum OR, V12, V21, Accutorr 3, Accutorr 7, Passport 8, Passport 12, Passport 12m, Passport 17m, T1, TD60, TM80, ePM 10M, ePM 12M, N1, N12, N15, N17, N19, N22, TD60/ TM70/TM80 with BP 10 module



**Thigh Reusable Blood Pressure Cuff**

115-027717-00

Reusable NIBP cuff, Thigh, limb circumference: 46 to 66cm, quick connect

Compatible with Accutorr 3, Accutorr 7, Accutorr V, DPM 3, DPM 4, DPM 5, DPM 6, DPM 7, VS9, Duo, Trio, Passport 2, Passport V, Spectrum, Spectrum OR, V12, V21, Passport 8, Passport 12, Passport 12m, Passport 17m, T1, ePM 10M, ePM 12M, N1, N12, N15, N17, N19, N22, TD60/ TM70/TM80 with BP 10 module

*Single Patient Use  
Blood Pressure Cuffs*



**Child Single Patient Use Blood Pressure Cuff**

115-027563-00

Disposable NIBP cuff, Child, limb circumference: 10 to 19cm, quick connect, box of 10

Compatible with Accutorr V, DPM 3, DPM 4, DPM 5, DPM 6, DPM 7, VS9, Duo, Trio, Passport 2, Passport V, Spectrum, Spectrum OR, V12, V21, Accutorr 3, Accutorr 7, Passport 8, Passport 12, Passport 12m, Passport 17m, T1, ePM 10M, ePM 12M, N1, N12, N15, N17, N19, N22, TD60/ TM70/TM80 with BP 10 module



**Small Adult Single Patient Use Blood Pressure Cuff** 115-027564-00

Disposable NIBP cuff, Small Adult, 18 to 26cm, quick connect, box of 10  
 Compatible with Accutorr V, DPM 3, DPM 4, DPM 5, DPM 6, DPM 7, VS9, Duo, Trio, Passport 2, Passport V, Spectrum, Spectrum OR, V12, V21, Accutorr 3, Accutorr 7, Passport 8, Passport 12, Passport 12m, Passport 17m, T1, TD60, TM80, ePM 10M, ePM 12M, N1, N12, N15, N17, N19, N22, TD60/ TM70/TM80 with BP 10 module



**Adult Single Patient Use Blood Pressure Cuff** 115-027565-00

Disposable NIBP cuff, Adult, limb circumference: 25 to 35cm, quick connect, box of 10  
 Compatible with Accutorr V, DPM 3, DPM 4, DPM 5, DPM 6, DPM 7, VS9, Duo, Trio, Passport 2, Passport V, Spectrum, Spectrum OR, V12, V21, Accutorr 3, Accutorr 7, Passport 8, Passport 12, Passport 12m, Passport 17m, T1, TD60, TM80, ePM 10M, ePM 12M, N1, N12, N15, N17, N19, N22, TD60/ TM70/TM80 with BP 10 module



**Adult Long Single Patient Use Blood Pressure Cuff** 115-027568-00

Disposable NIBP Cuff, Large Adult Long, limb circumference: 25 to 35cm, quick connect, box of 10  
 Compatible with Accutorr V, DPM 3, DPM 4, DPM 5, DPM 6, DPM 7, VS9, Duo, Trio, Passport 2, Passport V, Spectrum, Spectrum OR, V12, V21, Accutorr 3, Accutorr 7, Passport 8, Passport 12, Passport 12m, Passport 17m, T1, TD60, TM80, ePM 10M, ePM 12M, N1, N12, N15, N17, N19, N22, TD60/ TM70/TM80 with BP 10 module



**Large Adult Single Patient Use Blood Pressure Cuff** 115-027566-00

Disposable NIBP cuff, Large Adult, limb circumference: 33 to 47cm, quick connect, box of 10  
 Compatible with Accutorr V, DPM 3, DPM 4, DPM 5, DPM 6, DPM 7, VS9, Duo, Trio, Passport 2, Passport V, Spectrum, Spectrum OR, V12, V21, Accutorr 3, Accutorr 7, Passport 8, Passport 12, Passport 12m, Passport 17m, T1, TD60, TM80, eP ePM m 10M, ePM 12M, N1, N12, N15, N17, N19, N22, TD60/ TM70/TM80 with BP 10 module



**Large Adult Long Single Patient Use Blood Pressure Cuff** 115-027569-00

Disposable NIBP Cuff, Adult Long, limb circumference: 33 to 47cm, quick connect, box of 10  
 Compatible with Accutorr V, DPM 3, DPM 4, DPM 5, DPM 6, DPM 7, VS9, Duo, Trio, Passport 2, Passport V, Spectrum, Spectrum OR, V12, V21, Accutorr 3, Accutorr 7, Passport 8, Passport 12, Passport 12m, Passport 17m, T1, TD60, TM80, ePM 10M, ePM 12M, N1, N12, N15, N17, N19, N22, TD60/ TM70/TM80 with BP 10 module



**Thigh Single Patient Use Blood Pressure Cuff** 115-027567-00

Disposable NIBP cuff, Thigh, limb circumference: 46 to 66cm, quick connect, box of 5  
 Compatible with Accutorr V, DPM 3, DPM 4, DPM 5, DPM 6, DPM 7, VS9, Duo, Trio, Passport 2, Passport V, Spectrum, Spectrum OR, V12, V21, Accutorr 3, Accutorr 7, Passport 8, Passport 12, Passport 12m, Passport 17m, T1, TD60, TM80, ePM 10M, ePM 12M, N1, N12, N15, N17, N19, N22, TD60/ TM70/TM80 with BP 10 module



### NMT Cable

040-001462-00

Cable for NMT module

Compatible with Passport 12m, Passport 17m, N12, N15, N17, N19, N22

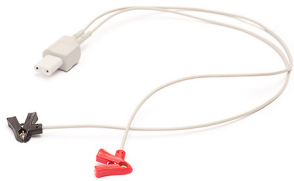


### NMT Sensor Cable

040-001463-00

NMT sensors cable for NMT module

Compatible with Passport 12m, Passport 17m, N12, N15, N17, N19, N22



### NMT Stimulation Cable

040-001464-00

Stimulation cable for NMT module

Compatible with Passport 12m, Passport 17m, N12, N15, N17, N19, N22



### NMT Sensor Securing Strap, Box of 20

040-002258-00

Sensor securing strap used with NMT module

Compatible with Passport 12m, Passport 17m, N12, N15, N17, N19, N22





---

**Recorder Paper - 12 rolls**

0683-00-0505-02

Chart Paper for Recorder, 12 rolls

Compatible with Accutorr V, DPM 3, DPM 4, DPM 5, DPM 6, DPM 7, VS9, Passport V, Trio, Accutorr 7, Passport 8, Passport 12, Passport 12m, Passport 17m, ePM 10M, ePM 12M, N12, N15, N17, N19, N22



---

**Recorder Paper - 10 rolls**

0683-00-0422-02

Chart Paper for Recorder, 10 rolls

Compatible with Passport 2, Spectrum, Spectrum OR, V12, V21



*DPM SpO<sub>2</sub> – Cables*



**DPM SpO<sub>2</sub> Cable - 6 Pin**

0010-20-42594

DPM SPO<sub>2</sub> Cable connects to DPM SPO<sub>2</sub> reusable and single patient use sensors, 6 pin

Compatible with Accutorr V, DPM 3, DPM 4, DPM 5, Passport V



**DPM SpO<sub>2</sub> Cable - 7 Pin**

0010-20-42710

DPM SPO<sub>2</sub> Cable connects to DPM SPO<sub>2</sub> reusable and single patient use sensors, 7 Pin

Compatible with DPM 6, DPM 7



**DPM SpO<sub>2</sub> Extension Cable**

0010-20-43075

DPM SPO<sub>2</sub> extension cable, DB9, 1.2 m

Compatible with DPM 1, DPM 2

*DPM SpO<sub>2</sub> – Reusable*



**DPM SpO<sub>2</sub> 512E Adult Soft Sensor**

512E-30-90390

DPM SPO<sub>2</sub> 512E Reusable Sensor, Adult Finger with soft cover

Compatible with Accutorr V, DPM 1, DPM 2, DPM 3, DPM 4, DPM 5, DPM 6, DPM 7, DPM CS, Passport V



**DPM SpO<sub>2</sub> 512F Adult Sensor**

512F-30-28263

DPM SpO<sub>2</sub> 512F Reusable Sensor, Adult, Finger

Compatible with Accutorr V, DPM 1, DPM 2, DPM 3, DPM 4, DPM 5, DPM 6, DPM 7, DPM CS, Passport V



**DPM SpO<sub>2</sub> 512G Pediatric Soft Sensor**

512G-30-90607

DPM SPO<sub>2</sub> 512G Reusable Sensor, Pediatric Finger with soft cover

Compatible with Accutorr V, DPM 1, DPM 2, DPM 3, DPM 4, DPM 5, DPM 6, DPM 7, DPM CS, Passport V



**DPM SpO<sub>2</sub> 512H Pediatric Sensor**

512H-30-79061

DPM SPO<sub>2</sub> 512H Reusable Sensor, Pediatric, Finger

Compatible with Accutorr V, DPM 1, DPM 2, DPM 3, DPM 4, DPM 5, DPM 6, DPM 7, DPM CS, Passport V



**DPM SpO<sub>2</sub> 518B Multiple Site Sensor** 518B-30-72107

DPM SPO<sub>2</sub> 518B Reusable Sensor, Neonatal, Foot (Adult/Pediatric, finger or toe)

Compatible with Accutorr V, DPM 1, DPM 2, DPM 3, DPM 4, DPM 5, DPM 6, DPM 7, Passport V

**DPM SpO<sub>2</sub> – Single Patient Use Sensors**



**DPM SpO<sub>2</sub> 520P Pediatric Sensors** 520P-30-64201

DPM SPO<sub>2</sub> 520P Single patient use sensor, Pediatric, 10 to 50kg, 20/box

Compatible with Accutorr V, DPM 1, DPM 2, DPM 3, DPM 4, DPM 5, DPM 6, DPM 7, DPM CS, Passport V



**DPM SpO<sub>2</sub> 520A Adult Sensors** 520A-30-64101

DPM SPO<sub>2</sub> 520A Single Patient Use sensor, Adult > 30kg, 20/box

Compatible with Accutorr V, DPM 1, DPM 2, DPM 3, DPM 4, DPM 5, DPM 6, DPM 7, DPM CS, Passport V



**DPM SpO<sub>2</sub> 520I Infant Sensors** 520I-30-64301

DPM SPO<sub>2</sub> 520I Single patient use sensor, Infant, 3 to 20kg, 20/box

Compatible with Accutorr V, DPM 1, DPM 2, DPM 3, DPM 4, DPM 5, DPM 6, DPM 7, Passport V



**DPM SpO<sub>2</sub> 520N Neonatal Sensors** 520N-30-64401

DPM SPO<sub>2</sub> 520N Single patient use sensor, Neonatal, <3kg, 20/box

Compatible with Accutorr V, DPM 1, DPM 2, DPM 3, DPM 4, DPM 5, DPM 6, DPM 7, Passport V

Mindray™ North America offers both Masimo SET® RD® and Masimo SET® LNCS®, sensors and cables. Reusable SpO<sub>2</sub> sensors are available in pediatric and adult sizes. Available in all patient sizes from neonate to adult, single patient use adhesive sensors are easy to apply, provide durability and improve patient comfort. 100% Latex Free.

*Masimo RD® SpO<sub>2</sub> Cables*



**Masimo RD SET Cable - 8 pin**

040-003310-00

Masimo RD SET patient cable connects to Masimo RD SET reusable and single patient use sensors

Compatible with Accutorr 3, Accutorr 7, VS9, Passport 8, Passport 12, Passport 12m, Passport 17m, T1, TD60, TM80, ePM 10M, ePM 12M, N1, N12, N15, N17, N19, N22



**RD to LNCS Adapter Cable**

040-003381-00

Masimo RD sensors to LNCS cable adapter: Connects Masimo RD Sensors to LNC Patient Cable

Compatible with Accutorr 3, Accutorr 7, VS9, Passport 8, Passport 12, Passport 12m, Passport 17m, T1, TD60, TM80, ePM 10M, ePM 12M, N1, N12, N15, N17, N19, N22



**LNCS® to RD Adapter Cable**

040-003426-00

Masimo LNCS sensors to RD cable adapter; Connects Masimo LNCS sensors to RD SET patient cable

Compatible with Accutorr 3, Accutorr 7, VS9, Passport 8, Passport 12, Passport 12m, Passport 17m, T1, TD60, TM80, ePM 10M, ePM 12M, N1, N12, N15, N17, N19, N22, TM70/TM80 with Masimo SpO<sub>2</sub>

*Masimo RD® SpO<sub>2</sub> Reusable Sensors*



**RD SET DCI®**

040-003376-00

SpO<sub>2</sub> sensor, RD SET DCI, Adult (> 30 kg)

Compatible with Accutorr 3, Accutorr 7, VS9, Passport 8, Passport 12, Passport 12m, Passport 17m, T1, TD60, TM80, ePM 10M, ePM 12M, N1, N12, N15, N17, N19, N22, TM70/TM80 with Masimo SpO<sub>2</sub> Module



**RD SET DCI-P®**

040-003377-00

SpO<sub>2</sub> sensor, RD SET DCI, Pediatric (10-50 kg)

Compatible with Accutorr 3, Accutorr 7, VS9, Passport 8, Passport 12, Passport 12m, Passport 17m, T1, TD60, TM80, ePM 10M, ePM 12M, N1, N12, N15, N17, N19, N22, TM70/TM80 with Masimo SpO<sub>2</sub> Module



**RD SET TC-I®**

040-003380-00

SpO<sub>2</sub> sensor, RD Set TC-I, tip-clip ear sensor, 3ft, Adult (> 30 kg)

Compatible with Accutorr 3, Accutorr 7, VS9, Passport 8, Passport 12, Passport 12m, Passport 17m, T1, TD60, TM80, ePM 10M, ePM 12M, N1, N12, N15, N17, N19, N22, TM70/TM80 with Masimo SpO<sub>2</sub> Module

*Masimo RD® SpO<sub>2</sub> Single Patient Adhesive Sensors*



**RD SET Adult**

040-003382-00

SpO<sub>2</sub> sensor, RD SET Adt, adhesive, Adult (> 30 kg, pkg/20)

Compatible with Accutorr 3, Accutorr 7, VS9, Passport 8, Passport 12, Passport 12m, Passport 17m, T1, TD60, TM80, ePm 10M, ePM 12M, N1, N12, N15, N17, N19, N22, TM70/TM80 with Masimo SpO<sub>2</sub> Module



**RD SET Pediatric**

040-003383-00

SpO<sub>2</sub> sensor, RD SET PDT, adhesive, Pediatric (10 to 50 kg, pkg/20)

Compatible with Accutorr 3, Accutorr 7, VS9, Passport 8, Passport 12, Passport 12m, Passport 17m, T1, TD60, TM80, ePm 10M, ePM 12M, N1, N12, N15, N17, N19, N22, TM70/TM80 with Masimo SpO<sub>2</sub> Module

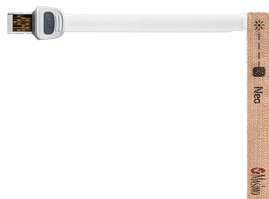


**RD SET Infant**

040-003384-00

SpO<sub>2</sub> sensor, RD Set Inf, adhesive, Infant (3 to 20 kg, pkg/20)

Compatible with Accutorr 3, Accutorr 7, VS9, Passport 8, Passport 12, Passport 12m, Passport 17m, T1, TD60, TM80, ePm 10M, ePM 12M, N1, N12, N15, N17, N19, N22

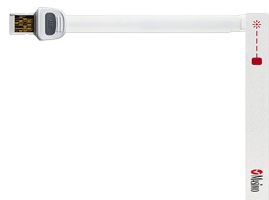


**RD SET Neo**

040-003385-00

SpO<sub>2</sub> sensor, RD Set Neo, adhesive, Neonatal /Adult (<3kg or >40kg, pkg/20)

Compatible with Accutorr 3, Accutorr 7, VS9, Passport 8, Passport 12, Passport 12m, Passport 17m, T1, TD60, TM80, ePM 10M, ePM 12M, N1, N12, N15, N17, N19, N22



**RD SET NeoPt**

040-003386-00

SpO<sub>2</sub> sensor, RD Set NeoPt, adhesive, Neonatal (<1 kg pkg/20)

Compatible with Accutorr 3, Accutorr 7, VS9, Passport 8, Passport 12, Passport 12m, Passport 17m, T1, TD60, TM80, ePM 10M, ePM 12M, N1, N12, N15, N17, N19, N22



**RD SET NeoPt-500**

040-003387-00

SpO<sub>2</sub> sensor, RD Set NeoPt-500, non-adhesive, (<1 kg pkg/20)

Compatible with Accutorr 3, Accutorr 7, VS9, Passport 8, Passport 12, Passport 12m, Passport 17m, T1, TD60, TM80, ePM 10M, ePM 12M, N1, N12, N15, N17, N19, N22

*Masimo LNCS® SpO<sub>2</sub> Cables*



**LNC-4 Masimo SpO<sub>2</sub> Cable**

0012-00-1652

LNC-4, Masimo LNCS SpO<sub>2</sub> Patient Cable, 4' (1.2 m)

Compatible with Accutorr V, Duo, Trio, Passport 2, Passport V, Spectrum, Spectrum OR, V12, V21



**LNC-10 Masimo SpO<sub>2</sub> Cable**

0012-00-1599

LNC-10, Masimo LNCS SpO<sub>2</sub> Patient Cable, 10' (3.1 m)

Compatible with Accutorr V, Duo, Trio, Passport 2, Passport V, Spectrum, Spectrum OR, V12, V21



**LNCS® Masimo SpO<sub>2</sub> Cable - 6 Pin**

115-023136-00

Masimo LNCS SpO<sub>2</sub> patient cable connects to Masimo LNCS sensors, 6 Pin

Compatible with DPM 3, DPM 4, DPM 5



**LNCS® Masimo SpO<sub>2</sub> Cable - 7 Pin**

115-023135-00

Masimo LNCS SpO<sub>2</sub> patient cable connects to Masimo LNCS sensors, 7 Pin

Compatible with DPM 6, DPM 7



**LNCS® Masimo SpO<sub>2</sub> Cable - 8 Pin**

115-020768-00

Masimo LNCS SpO<sub>2</sub> patient cable connects to Masimo LNCS sensors, 8 Pin

Compatible with DPM 6, DPM 7, Accutorr 3, Accutorr 7, VS9, Passport 8, Passport 12, Passport 12m, Passport 17m, T1, ePM 10M, ePM 12M, N1, N12, N15, N17, N19, N22

*Masimo LNCS® SpO<sub>2</sub> Reusable Sensors*



**LNCS® DCI Adult Sensor**

0600-00-0126

LNCS DCI Adult Reusable Finger Sensor, patient weight range > 30 kg

Compatible with Accutorr V, DPM 3, DPM 4, DPM 5, DPM 6, DPM 7, VS9, Duo, Trio, Passport 2, Passport V, Spectrum, Spectrum OR, V12, V21, Accutorr 3, Accutorr 7, Passport 8, Passport 12, Passport 12m, Passport 17m, T1, TM70/TM80 with Masimo SpO<sub>2</sub> Module, ePM 10M, ePM 12M, N1, N12, N15, N17, N19, N22



**LNCS® DCIP Pediatric Sensor**

0600-00-0127

LNCS DCIP Pediatric Reusable Finger Sensor, patient weight range 10 to 50 kg

Compatible with Accutorr V, DPM 3, DPM 4, DPM 5, DPM 6, DPM 7, VS9, Duo, Trio, Passport 2, Passport V, Spectrum, Spectrum OR, V12, V21, Accutorr 3, Accutorr 7, Passport 8, Passport 12, Passport 12m, Passport 17m, T1, TM70/TM80 with Masimo SpO<sub>2</sub> Module, ePM 10M, ePM 12M, N1, N12, N15, N17, N19, N22



**LNCS® TC-I Ear Sensor**

0600-00-0128

LNCS TC-I Tip Clip Reusable Ear Sensor, patient weight range > 30 kg

Compatible with Accutorr V, DPM 3, DPM 4, DPM 5, DPM 6, DPM 7, VS9, Duo, Trio, Passport 2, Passport V, Spectrum, Spectrum OR, V12, V21, Accutorr 3, Accutorr 7, Passport 8, Passport 12, Passport 12m, Passport 17m, T1, ePM 10M, ePM 12M, N1, N12, N15, N17, N19, N22

*Masimo LNCS® SpO<sub>2</sub> Single Patient Adhesive Sensors*



**LNCS® Adtx Adult Sensors**

0600-00-0121

LNCS Adtx - Adult Single Patient Adhesive Sensors, patient weight range > 30 kg (20/box)

Compatible with Accutorr V, DPM 3, DPM 4, DPM 5, DPM 6, DPM 7, VS9, Duo, Trio, Passport 2, Passport V, Spectrum, Spectrum OR, V12, V21, Accutorr 3, Accutorr 7, Passport 8, Passport 12, Passport 12m, Passport 17m, T1, TD60/TM70/TM80 with Masimo SpO<sub>2</sub> Module, ePM 10M, ePM 12M, N1, N12, N15, N17, N19, N22



**LNCS® Inf Infant Sensors**

0600-00-0158

LNCS Inf - Infant Single Patient Adhesive Sensors, patient weight range 3 to 20 kg (20/box)

Compatible with Accutorr V, DPM 3, DPM 4, DPM 5, DPM 6, DPM 7, VS9, Trio, Passport 2, Passport V, Spectrum, Spectrum OR, V12, V21, Accutorr 3, Accutorr 7, Passport 8, Passport 12, Passport 12m, Passport 17m, T1, ePM 10M, ePM 12M, N1, N12, N15, N17, N19, N22



**LNCS® NEO Neonatal Sensors**

0600-00-0157

LNCS NEO Neonatal single patient adhesive sensors - for patients more than 3 kg and less than 40 kgs (20/box)

Compatible with Accutorr V, DPM 3, DPM 4, DPM 5, DPM 6, DPM 7, VS9, Passport 2, Passport V, Spectrum, Spectrum OR, V12, V21, Accutorr 3, Accutorr 7, Passport 8, Passport 12, Passport 12m, Passport 17m, T1, ePM 10M, ePM 12M, N1, N12, N15, N17, N19, N22



**LNCS® NeoPt Neonatal Preterm Sensors**

0600-00-0156

LNCS NeoPt Neonatal preterm single patient adhesive sensors, patient weight range < 1 kg (20/box)

Compatible with Accutorr V, DPM 3, DPM 4, DPM 5, DPM 6, DPM 7, VS9, Passport 2, Passport V, Spectrum, Spectrum OR, V12, V21, Accutorr 3, Accutorr 7, Passport 8, Passport 12, Passport 12m, Passport 17m, T1, ePM 10M, ePM 12M, N1, N12, N15, N17, N19, N22



**LNCS® Pdtx Pediatric Sensors**

0600-00-0122

LNCS Pdtx- Pediatric Single Patient Adhesive Sensors, patient weight range 10 to 50 kg (20/box)

Compatible with Accutorr V, DPM 3, DPM 4, DPM 5, DPM 6, DPM 7, VS9, Duo, Trio, Passport 2, Passport V, Spectrum, Spectrum OR, V12, V21, Accutorr 3, Accutorr 7, Passport 8, Passport 12, Passport 12m, Passport 17m, T1, TD60/TM70/TM80 with Masimo SpO2 Module, ePM 10M, ePM 12M, N1, N12, N15, N17, N19, N22



*Nellcor™ SpO<sub>2</sub> Cables*



**Nellcor™ OxiMax™ SpO<sub>2</sub> Cable** 0012-00-1464

Nellcor OxiMax DOC-10 SpO<sub>2</sub> Cable

Compatible with Accutorr V, Duo, Trio, Passport 2, Passport V, Spectrum, Spectrum OR, V12, V21



**Nellcor™ OxiMax™ SpO<sub>2</sub> Cable - 6 Pin** 0010-20-42595

Nellcor SpO<sub>2</sub> extension cable, 6 Pin

Compatible with DPM 3, DPM 4, DPM 5



**Nellcor™ OxiMax™ SpO<sub>2</sub> Cable** 0010-20-42712

Nellcor SpO<sub>2</sub> extension cable

Compatible with DPM 6, DPM 7, Accutorr 3, Accutorr 7, VS9, Passport 8, Passport 12, Passport 12m, Passport 17m, T1, ePm 10M, ePM 12M, N1, N12, N15, N17, N19, N22

*Nonin SpO<sub>2</sub> Accessories*



**Cleaning Plug** 0003-00-0055

SpO<sub>2</sub> Module Cleaning Plug

Compatible with Panorama Telepack



**Nonin SpO<sub>2</sub> Single Patient Use Adult Sensors** 0600-00-0139-24

Adult Single Patient Use Nonin SpO<sub>2</sub> Sensor (24/pkg). Used with Nonin SpO<sub>2</sub> cable.

Compatible with Panorama Telepack, TD60



**Nonin SpO<sub>2</sub> – 8000AA Reusable Adult Sensor** 100-000077-00

Adult Reusable Nonin SpO<sub>2</sub> Finger Sensor

Compatible with Panorama Telepack, TD60



## Rolling Stands



### Mobile Rolling Stand, Standard

045-004267-00

Mobile Rolling Stand with quick release mount, basket

Compatible with Accutorr 3, Accutorr 7, ePM 10m, ePM 12m, VS9



### N15 / N17 Rolling Stand

045-000915-00

Rolling stand with standard mounting bracket (045-000955-00)

Compatible with DPM 6, Passport 12m, N15, N17

### N12 Rolling Stand

045-003255-00

N12 rolling stand with quick release mount

Compatible with N12

### N1 Rolling Stand

045-003428-00

N1 rolling stand with quick release mount

Compatible with N1



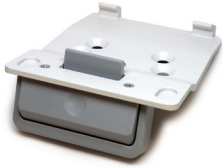
### Power Plus Mobile Stand

045-004269-00

The Power Plus Mobile Stand offers a work surface with handle and basket. Add a battery to the work surface for added battery life with the VS9 (battery purchased separately).

Compatible with VS9

*Rolling Stand Parts*



**VS Series Quick Release**

045-003424-00

Quick release mount for Accutorr Vital Signs Monitor

Compatible with Accutorr 3, Accutorr 7



**Bin - Value Rolling Stand**

115-037732-00

Value Rolling Stand Bin

Compatible with Accutorr V, Duo, Trio, Accutorr 3, Accutorr 7, T1, Passport 8



**Caster Kit**

121-001346-00

Set of 5 casters for value stand and Accutorr Vital Signs Mobile Stand

Compatible with Mobile Rolling Stand 045-002960-00

**Cleaning/Disinfecting Wipes Mount**

045-002935-00

Use the cleaning / disinfecting wipes mount to attach disinfecting wipes right to the stand for quick access to cleaning supplies. Used with rolling stands 045-002960-00, 045-004268-00, 045-004267-00

Compatible with Accutorr 3, Accutorr 7, ePM10M, ePM 12m, N12

*rSO<sub>2</sub> Accessories*

---

<b>INVOS Sensor Cable - Channel 1</b>	100-000164-00
Sensor cable, channel 1, INVOS 5100C, reusable	
Compatible with N12, N15, N17, N19, N22	

---

<b>INVOS Sensor Cable - Channel 2</b>	100-000165-00
Sensor cable, channel 2, INVOS 5100C, reusable	
Compatible with N12, N15, N17, N19, N22	

---

<b>INVOS Preamplifier</b>	100-000173-00
Preamplifier, channel 1 & 2, INVOS 5100C, reusable	
Compatible with N12, N15, N17, N19, N22	

*ScVO<sub>2</sub> Accessories*

---

**CeVOX Fiberoptic Probe - 37cm**

040-000919-00

CeVOX fiberoptic probe, 37 cm,disposable (pkg of 1)

Compatible with N12, N15, N17, N19, N22

---

**CeVOX Fiberoptic Probe - 35 cm**

040-000920-00

CeVOX fiberoptic probe, 35 cm,disposable (pkg of 1)

Compatible with N12, N15, N17, N19, N22

*Disposable Mindray™  
Temperature Probes*



**MR411 Esophageal / Rectal Disposable Temp Probe** 0011-30-90446

Disposable temperature probe for Adult/Pediatric/Neonatal patients, measurement site: Esophageal/Rectal

Compatible with DPM 4, DPM 5, Passport V, DPM 6, DPM 7, Passport 8, Passport 12, Passport 12m, Passport 17m, T1, N1, N12, N15, N17, N19, N22



**MR412 Disposable Skin Temp Probe** 0011-30-90447

Disposable temperature probe for Adult/Pediatric/Neonatal patients, measurement site: Skin

Compatible with DPM 4, DPM 5, Passport V, DPM 6, DPM 7, Passport 8, Passport 12, Passport 12m, Passport 17m, T1, N1, N12, N15, N17, N19, N22

**Esophageal/Rectal Disposable Temp Probe** 040-003294-00

Temperature probe, disposable, adult/pediatric, esophageal/rectal, 9FR (20/pkg)

Compatible with ePM 10M, ePM12M, N12, N15, N17, N19, N22

**Skin Surface Disposable Temp Probe** 040-003295-00

Temperature probe, disposable, all sizes, skin surface (20/pkg)

Compatible with ePM 10M, ePM12M, N12, N15, N17, N19, N22

*Disposable Temperature  
Probes – 400 Series*



**ER 400-12 Esophageal/Rectal Disposable Temp Probe** 0206-03-0212-02

Esophageal/Rectal, 400 Series Disposable Temperature Probe, 12 Fr. ER 400-12 (20/box)

Compatible with Trio, Passport 2, Passport V, Spectrum, Spectrum OR, V12, V21, DPM 6, DPM 7, Passport 8, Passport 12, Passport 12m, Passport 17m, T1, ePM 10M, ePM 12M, N1, N12, N15, N17, N19, N22



**ER 400-9 Esophageal/Rectal Disposable Temp Probe** 0206-03-0209-02

Esophageal/Rectal, 400 Series Disposable Temperature Probe, 9 Fr. ER 400-9 (20/box)

Compatible with Trio, Passport 2, Passport V, Spectrum, Spectrum OR, V12, V21, DPM 6, DPM 7, Passport 8, Passport 12, Passport 12m, Passport 17m, T1, ePM 10M, ePM 12M, N1, N12, N15, N17, N19, N22



**ES 400-12 Esophageal Stethoscope Disposable Temp Probe** 0206-03-0112-02

Esophageal Stethoscope, 400 Series Disposable Temperature Probe, 12 Fr. ES 400-12 (20/box)

Compatible with Trio, Passport 2, Passport V, Spectrum, Spectrum OR, V12, V21, DPM 6, DPM 7, Passport 8, Passport 12, Passport 12m, Passport 17m, T1, ePM 10M, ePM 12M, N1, N12, N15, N17, N19, N22



**ES 400-18 Esophageal Stethoscope Disposable Temp Probe** 0206-03-0118-02

Esophageal Stethoscope, 400 Series Disposable Temperature Probe, 18 Fr. ES 400-18 (20/box)

Compatible with Trio, Passport 2, Passport V, Spectrum, Spectrum OR, V12, V21, DPM 6, DPM 7, Passport 8, Passport 12, Passport 12m, Passport 17m, T1, ePM 10M, ePM 12M, N1, N12, N15, N17, N19, N22



**SK 400 Skin Disposable Temp Probe** 0206-03-0300-02

Skin, 400 Series Disposable Temperature Probe, SK 400 (20/box)

Compatible with Trio, Passport 2, Passport V, Spectrum, Spectrum OR, V12, V21, DPM 6, DPM 7, Passport 8, Passport 12, Passport 12m, Passport 17m, T1, ePM 10M, ePM 12M, N1, N12, N15, N17, N19, N22

**Reusable Mindray™  
Temperature Probes**



**MR Pediatric Skin Temp Probe** 040-000058-00

5 pin Temp probe, Pediatric skin; Connects direct to monitor

Compatible with Passport V, V12, V21



**MR401 Esophageal/Rectal Adult Reusable Temp Probe** 0011-30-90440

MR401 reusable Temperature probe, Adult, Esophageal/Rectal, Audio; Connects direct to monitor

Compatible with DPM 4, DPM 5



**MR401B Esophageal/Rectal Adult Reusable Temp Probe** 0011-30-37392

MR401B reusable Temperature probe, Adult, Esophageal/Rectal, 2 Pin; Connects direct to monitor

Compatible with DPM 6, DPM 7, Passport 8, Passport 12, Passport 12m, Passport 17m, T1, ePM 10M, ePM 12M, N1, N12, N15, N17, N19, N22



**MR402 Esophageal/Rectal Pediatric/Neonatal Reusable Temp Probe**

0011-30-90441

MR402 reusable Temperature probe, Pediatric/Neonatal, Esophageal/Rectal, Audio; Connects direct to monitor

Compatible with DPM 4, DPM 5



**MR402B Esophageal/Rectal Pediatric/Neonatal Reusable Temp Probe**

0011-30-37394

MR402B reusable Temp probe, Pediatric/Neonatal, Esophageal/Rectal, 2 Pin; Connects direct to monitor

Compatible with DPM 6, DPM 7, Passport 8, Passport 12, Passport 12m, Passport 17m, T1, ePM 10M, ePM 12M, N1, N12, N15, N17, N19, N22



**MR403 Adult Reusable Skin Temp Probe**

0011-30-90442

MR403 reusable Temperature probe, Adult, Skin, Audio; Connects direct to monitor

Compatible with DPM 4, DPM 5



**MR403B Adult Reusable Skin Temp Probe**

0011-30-37393

MR403B reusable Temperature probe, Adult, Skin, 2 Pin; Connects direct to monitor

Compatible with DPM 6, DPM 7, Passport 8, Passport 12, Passport 12m, Passport 17m, T1, ePM 10M, ePM 12M, N1, N12, N15, N17, N19, N22



**MR404 Pediatric/Neonatal Reusable Skin Probe**

0011-30-90443

MR404 reusable Temperature probe, Pediatric/Neonatal, Skin, Audio; Connects direct to monitor

Compatible with DPM 4, DPM 5



**MR404B Pediatric/Neonatal Reusable Skin Probe**

0011-30-37395

MR404B reusable Temp probe, Pediatric/Neonatal, Skin, 2 Pin; Connects direct to monitor

Compatible with DPM 6, DPM 7, Passport 8, Passport 12, Passport 12m, Passport 17m, T1, ePM 10M, ePM 12M, N1, N12, N15, N17, N19, N22

*Reusable Temperature Cables*



**400 Series Reusable Temp Cable**

0012-00-0975

Reusable Instrument Cable, 400 Series; For use with 400 series disposable probes: Connects temperature probes to patient monitor

Compatible with Trio, Passport 2, Passport 8, Passport 12, Passport 12m, Passport 17m, Spectrum, Spectrum OR



**400 Series Temperature Cable**

040-000091-00

Reusable Instrument Cable, 400 Series; for use with 400 Series Disposable Temperature Probes, connects temperature probes to patient monitor

Compatible with Passport V, V12, V21



**400 Series Temperature Cable**

040-001235-00

This cable directly connects 400 Series disposable temperature probes to the monitor.

Compatible with Passport 8, Passport 12, Passport 12m, Passport 17m, T1, ePM 10M, ePM 12M, N1, N12, N15, N17, N19, N22



**Temperature Transition Cable for 400 Series Temp Probes**

0010-30-43056

This cable allows the use of the 400 series disposable temperature probes. Connect the transition cable to the module then connect the transition cable to the reusable temp cable, 0012-00-0975.

Compatible with DPM 6, DPM 7, Passport 8, Passport 12, Passport 12m, Passport 17m, T1



**MR Temperature Cable**

0011-30-37391

Temperature extension cable for use with Mindray™ disposable temperature probes

Compatible with DPM 6, DPM 7, Passport 8, Passport 12, Passport 12m, Passport 17m, T1, N1, N12, N15, N17, N19, N22



**MR Temperature Cable**

0011-30-90444

Temperature extension cable for use with Mindray™ disposable temperature probes

Compatible with DPM 4, DPM 5



*SmarTemp*



**SmarTemp Oral Probe**

6006-30-39598

Oral/Auxiliary probe for use with SmarTemp temperature module

Compatible with Accutorr 3, Accutorr 7, VS9



**SmarTemp Oral Probe Blue Sheath**

M09A-20-62062

Blue sheath for use with the SmarTemp Oral/Auxiliary probe

Compatible with Accutorr 3, Accutorr 7, VS9



**SmarTemp Probe Covers - 2000/case**

M09A-30-62128

Probe covers for use with SmarTemp temperature Probes: 2000 pcs/case (100 boxes, 20 pcs/box)

Compatible with Accutorr 3, Accutorr 7, VS9



**SmarTemp Probe Covers - Box of 20**

M09A-20-62124

Probe covers for use with SmarTemp temperature probes, box of 20

Compatible with Accutorr 3, Accutorr 7, VS9



**SmarTemp Rectal Probe**

6006-30-39599

Rectal probe for use with SmarTemp temperature module

Compatible with Accutorr 3, Accutorr 7, VS9



**SmarTemp Rectal Probe Sheath**

M09A-20-62062-51

Sheath for use with the SmarTemp Rectal probe

Compatible with Accutorr 3, Accutorr 7, VS9



**Exergen Temporal Scanner**

040-003273-00

Exergen Temporal Scanner Measures Temperature

Compatible with Accutorr 7, VS9

---

**Exergen Cable** 040-003354-00

Exergen Cable attaches to the Exergen Temporal scanner

Compatible with Accutorr 7, VS9

*Welch Allyn® SureTemp® Plus  
Thermometer Module and  
Accessories*




---

**Welch Allyn® Sure Temp® Plus Probe Covers** 040-002471-00

Probe covers for the Welch Allyn® SureTemp Plus thermometer module, 7500/case

Compatible with Accutorr 3, Accutorr 7, VS9




---

**Accutorr 3 Welch Allyn® SureTemp® Plus Bracket** 115-025042-00

Mounting bracket used to mount and lock the Welch Allyn® SureTemp Plus thermometer module to the side of the Accutorr 3

Compatible with Accutorr 3




---

**Welch Allyn® SureTemp® Plus Bracket** 115-025041-00

Mounting bracket used to mount and lock the Welch Allyn® SureTemp Plus thermometer module to the side of the Accutorr 7

Compatible with Accutorr 7

---

**VS9 Welch Allyn® SureTemp® Plus Bracket** 115-073878-00

Mounting bracket used to mount and lock the Welch Allyn® SureTemp Plus thermometer module to the side of the VS9

Compatible with VS9




---

**Welch Allyn® SureTemp® Plus Thermometer Module** 0992-00-0198

Welch Allyn® SureTemp Plus Thermometer Module includes one 9' oral probe with oral probe well and a box of 25 probe covers

Compatible with Accutorr 3, Accutorr 7, VS9

# healthcare within reach



monitoring • anesthesia • ultrasound

**Vision:** Better healthcare for all

**Mission:** Advance medical technologies to make healthcare more accessible

Mindray is a leading developer, manufacturer and supplier of medical device solutions and technologies used in healthcare facilities around the globe. We believe we can change lives by making the most advanced healthcare technology attainable for all. We do this by empowering healthcare professionals through innovative, high-value solutions that help create the next generation of life-saving tools across patient monitoring, anesthesia delivery and ultrasound imaging.

At Mindray, we understand the shift in healthcare from volume to value and continuously deliver solutions that matter in this evolving environment. Our team is disrupting the industry, radically addressing today's needs with the technology of tomorrow. We are creating innovative, game-changing products and partnerships, shaping a new conversation for healthcare providers across North America. We work with thousands of healthcare providers day-to-day to drive the development and implementation of smarter technology – solutions that are simple and affordable, easy to adapt, and return bottom line results and meaningful outcomes. Together, we are creating a higher standard for healthcare.

**Mindray North America is headquartered in Mahwah, New Jersey. Our Ultrasound Innovation Center is located in San Jose, California with additional facilities in Nashville, Tennessee and Seattle, Washington.**



Mindray North America Corporate Headquarters, Mahwah, NJ



Innovation Center, San Jose, CA

## Mindray North America

800 MacArthur Blvd., Mahwah, NJ 07430

Tel: 800.288.2121 Tel: 201.995.8000 Fax: 800.926.4275 [www.mindray.com](http://www.mindray.com)

Mindray® is a registered trademark of Shenzhen Mindray Bio-Medical Electronics Co., Ltd.  
All brands and product names are trademarks of their respective owners. Specifications subject to change without notice.  
Contact your Mindray Representative for the most current information.

©2022 Mindray DS USA, Inc. Subject to change. 07/22 P/N: 0002-08-5639 Rev F

**mindray**  
NORTH AMERICA